

# ATOMIC Briefing Summary

2/10/2020

- Briefing presentation from Yuan-Ming is [here](#)
- Our main sources are:

<https://www.esrl.noaa.gov/psd/atomic/briefing/>

<https://observations.ipsl.fr/aeris/eurec4a/#/>

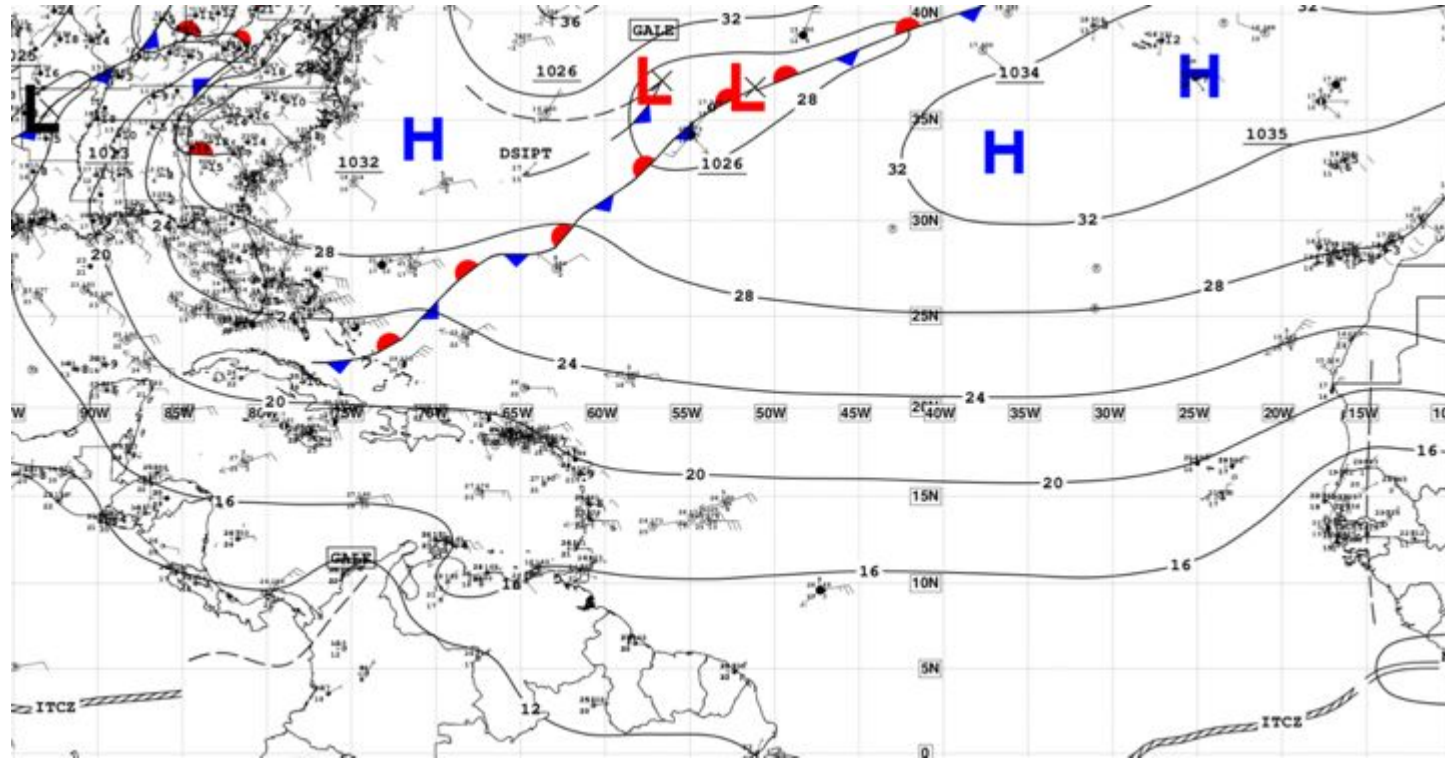
- Latest ATOMIC weather briefing from Caribbean forecasters can be found here:

[http://eurec4a.uk/forecast\\_testbed/](http://eurec4a.uk/forecast_testbed/)

- Flight planning WX briefing here:

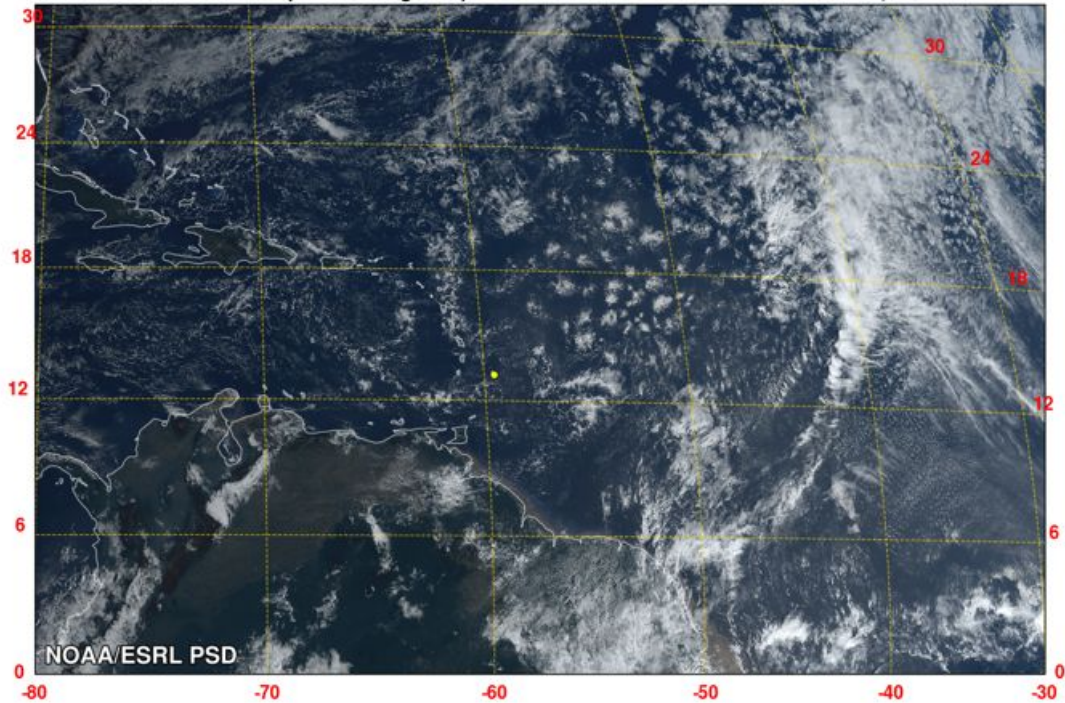
<https://observations.ipsl.fr/aeris/eurec4a-data/REPORTS/Wx/2020/20200210/Wx-0210.pdf>

06 UTC Feb 10, Mon



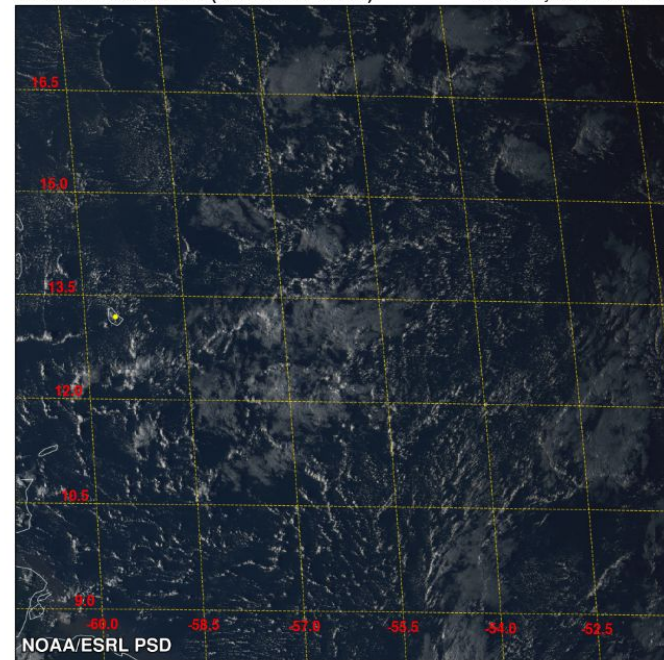
GOES-16 True Color + IR (ATOMIC regional)

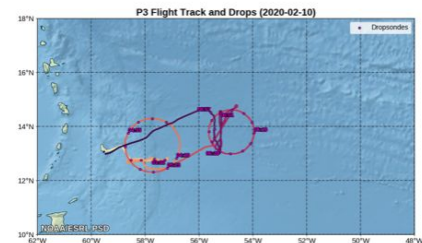
10 February 2020 13:00 UTC



GOES-16 True Color + IR (ATOMIC mesoscale)

10 February 2020 20:58 UTC





## Soundings with GFS Model Comparisons

Selected Platform:

NOAA P3

Sonde Time:

< Prev

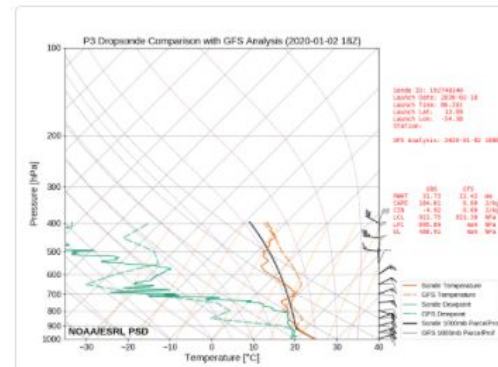
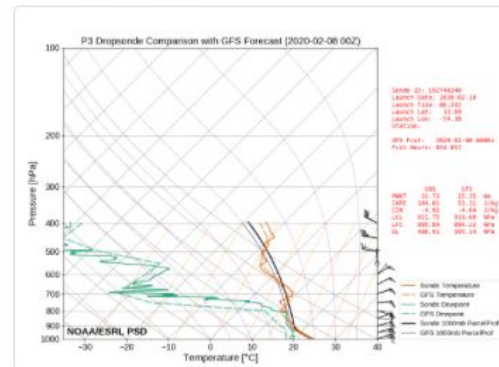
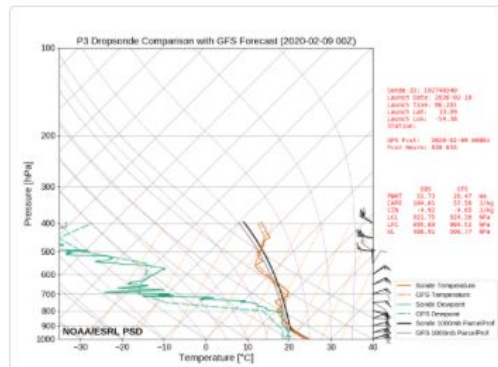
2020-02-10 06:28 UTC

Next >

Analysis

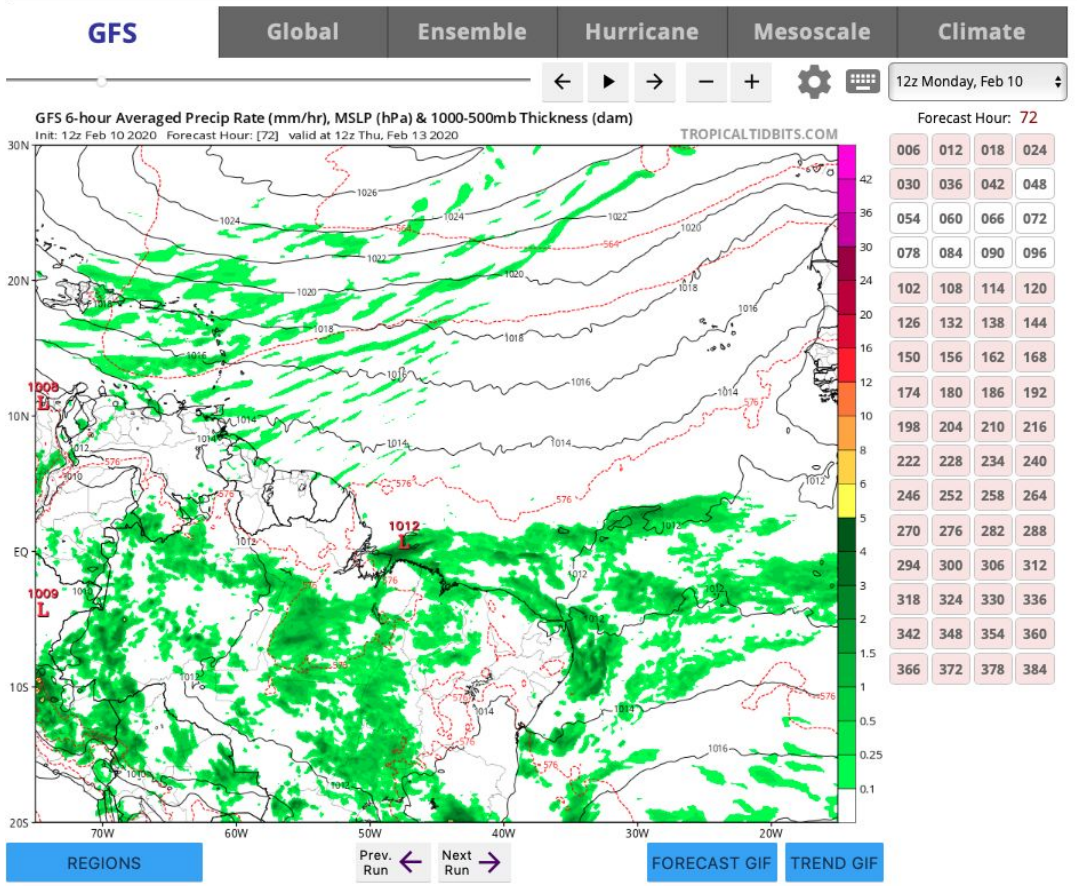
~24 Hour Forecast

~48 Hour Forecast

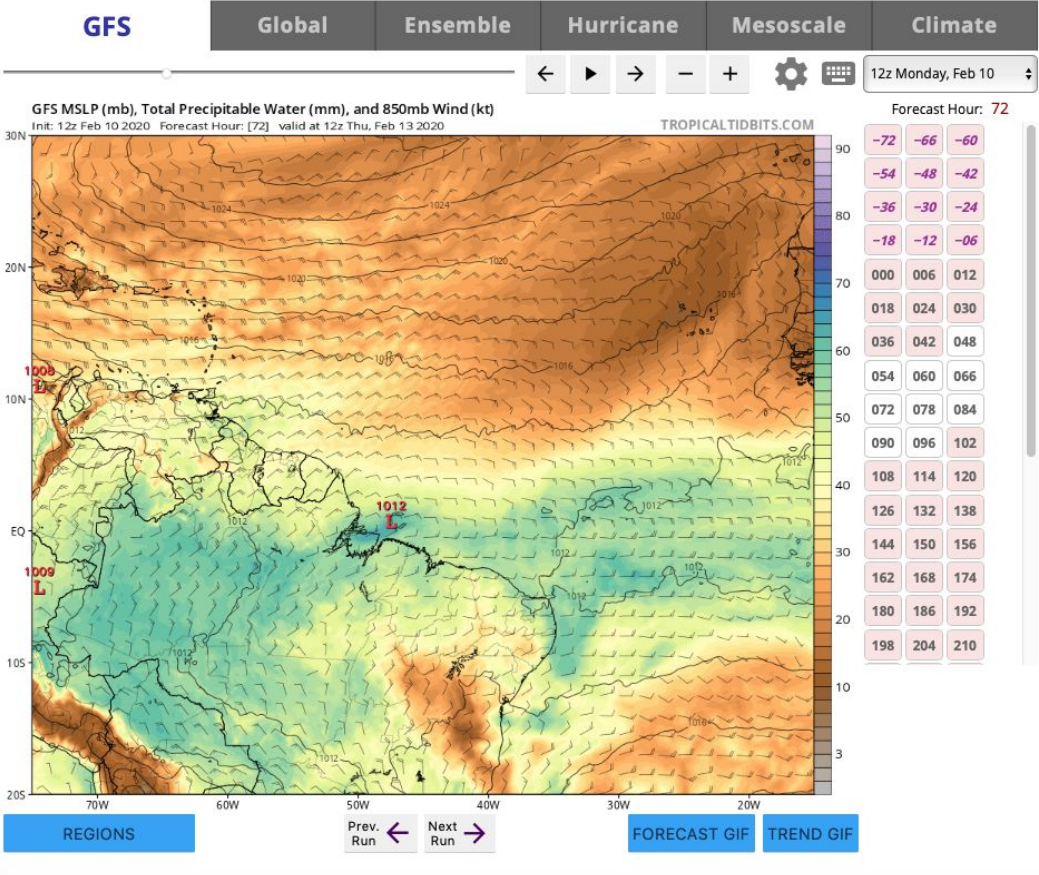


The GFS analysis field is from the closest run time to the sounding time; the 24 & 48 hour forecast data are interpolated from the nearest times to the sounding time (see plot for exact times used). GFS vertical spacing is every 50 hPa.

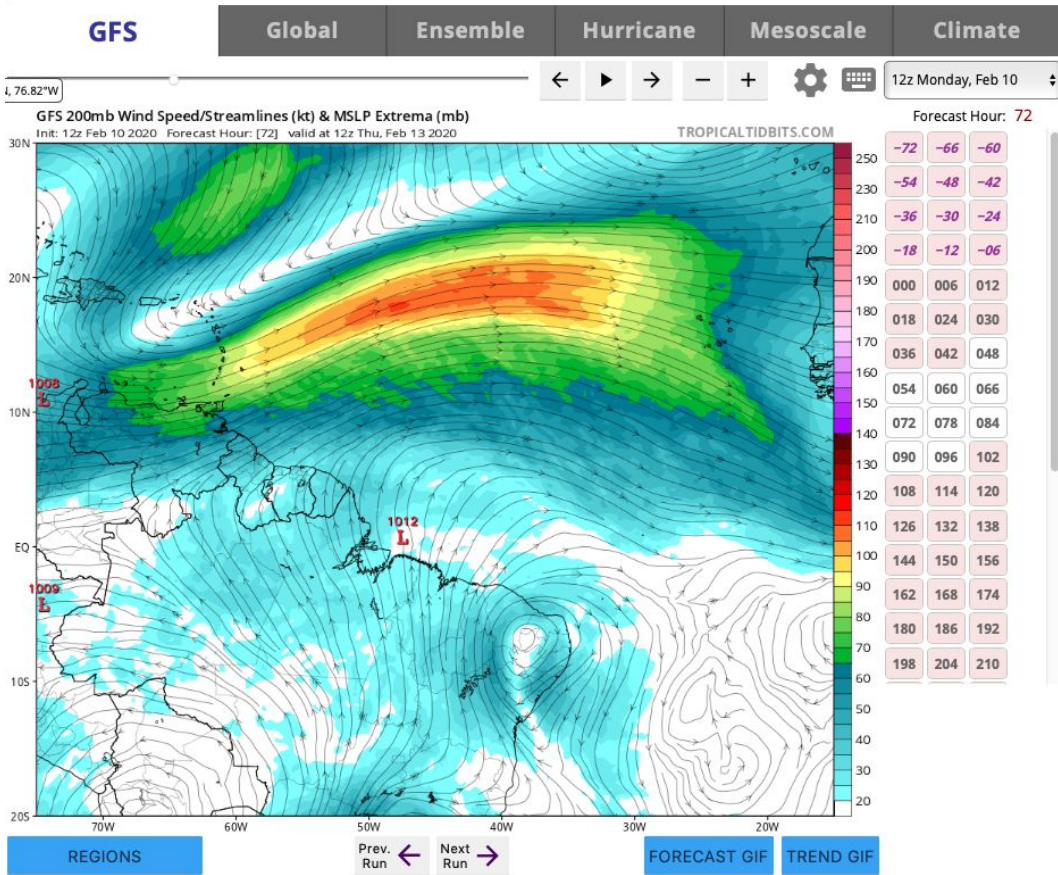
# GFS 3 day outlook



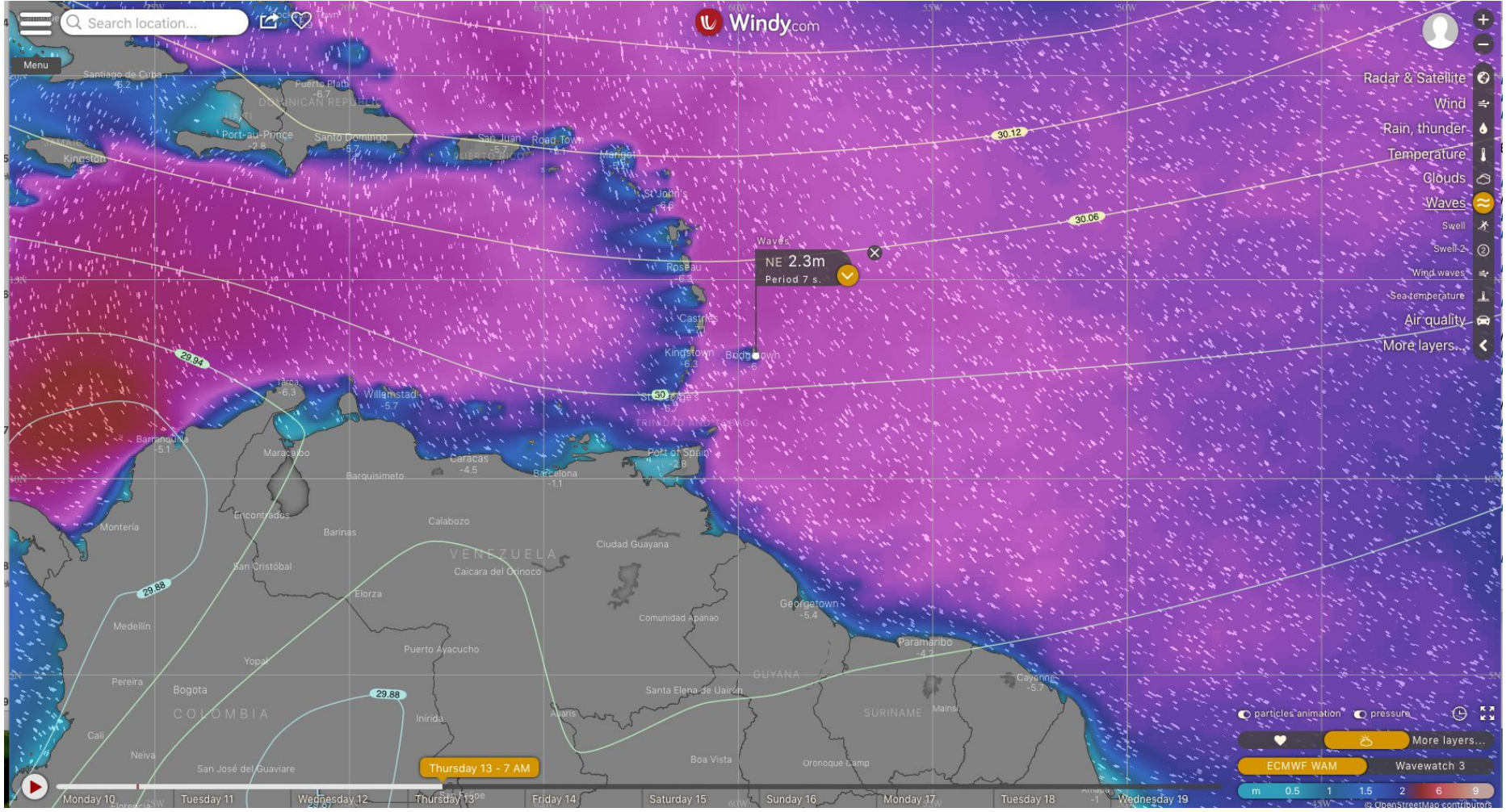
# GFS 3 day outlook



# GFS 3 day outlook







Waves  
NE 2.3m  
Period 7 s.

- Radar & Satellite
- Wind
- Rain, thunder
- Temperature
- Clouds
- Waves
- Swell
- Swell-2
- Wind waves
- Sea temperature
- Air quality
- More layers...

Thursday 13 - 7 AM

particles animation pressure

ECMWF WAM Wavewatch 3

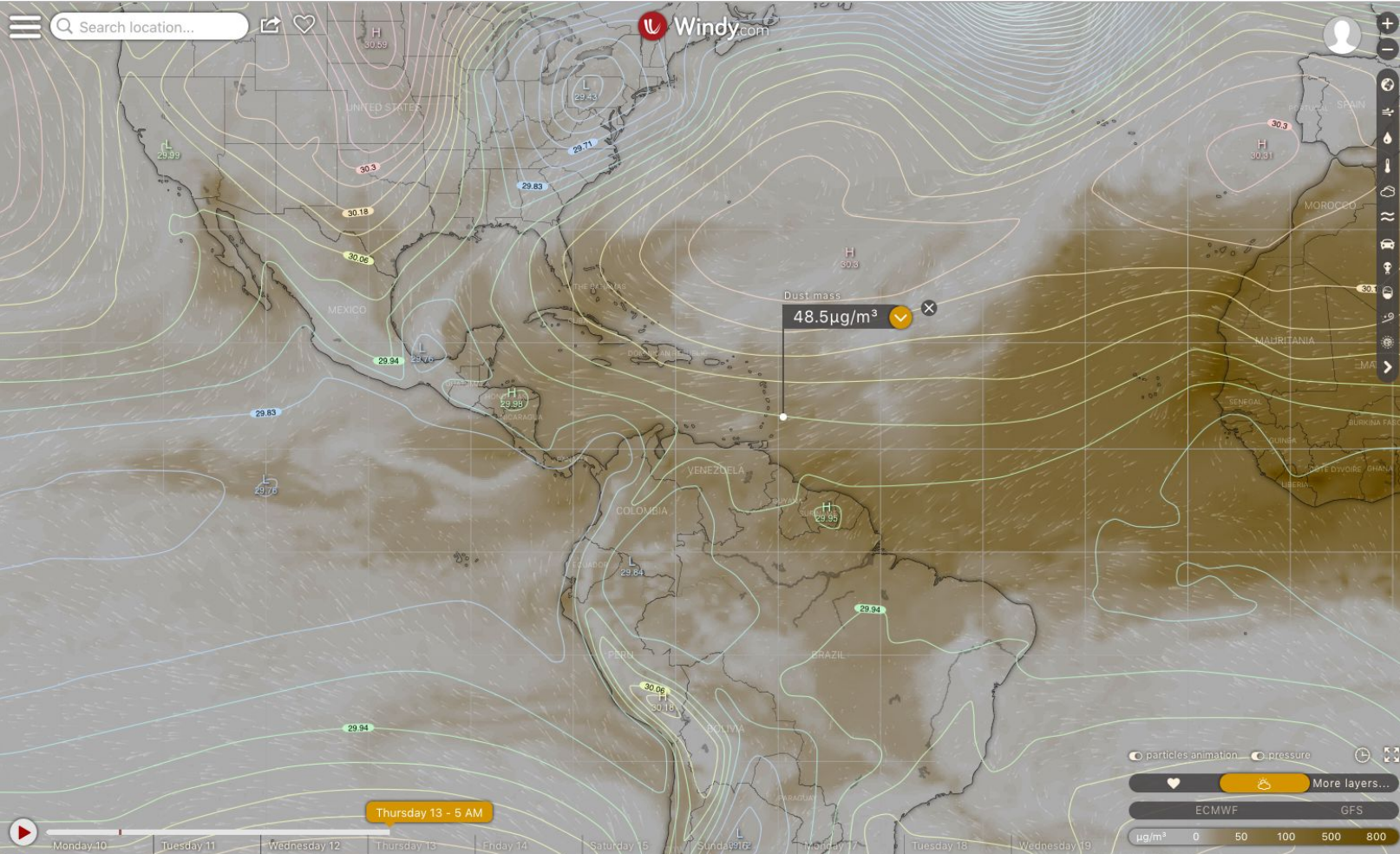
m 0.5 1 1.5 2 6 9

© OpenStreetMap contributors

☰ Search location...



- +
- 
- 🔄
- 📍
- 🌧️
- ☁️
- 🚗
- 🏠
- 🌊
- 🌬️
- 🔍



Dust mass  
 48.5µg/m³

particles animation  
  pressure  
 🕒 🗺️

❤️ 🌪️ More layers...

ECMWF   GFS

µg/m³   0   50   100   500   800

Thursday 13 - 5 AM

🎮 Monday 10   Tuesday 11   Wednesday 12   Thursday 13   Friday 14   Saturday 15   Sunday 16   Monday 17   Tuesday 18   Wednesday 19

# Summary (Yuan-Ming)

- The High Pressure Ridge remains the significant feature for the island for the next few days.
- Strong winds are expected especially on the Eastern side of the island.
- The forecast is for mainly partly cloudy with intermittent showers.
- High Waves are expected averaging 8ft high and upwards.
- Mainly flower type cloud expected during the morning. Expected to transition to more more gravel type by this afternoon.
- Moderate winds in the low levels and some vertical extent of clouds may result in some turbulence.
- OUTLOOK: Some partly cloudy periods with showers expected tonight into tomorrow.