

## **Summary of Key Briefing Points: 1030-1130am MST Tuesday January 19, 2016**

### **Current Conditions: Tropics and Midlatitudes**

- ° Two regions of convection near our campaign region
  - One larger scale, 180 to 160W, centered slightly north of equator 3°S-5°N
  - Second, smaller scale, 140W to 115W, centered slightly north of equator 0-5°N
  - The western convection has shown intensification and organization in past 1-2 days
  - GFS 250 wind analysis indicates poleward spreading divergent flow from both region
- ° Large scale 250 mb winds over the NPAC is showing 2 distinct jet streams
  - a subtropical branch w/entrance region near 15°N, 120°W
  - a wavy polar branch spanning the Pacific, and centered north of Hawaii
  - a distinct split in the polar branch is occurring on the West Coast
- ° CA experiencing moderate to heavy rains from about Monterey northward at briefing time.
  - heavier OBS totals past 24 hours --- 2-3 inches
  - heavy pcpn shifting into the northern/central Sierra today
  - 8 & 5-Station CADWR monitoring indicates *above normal accumulation* WY to date

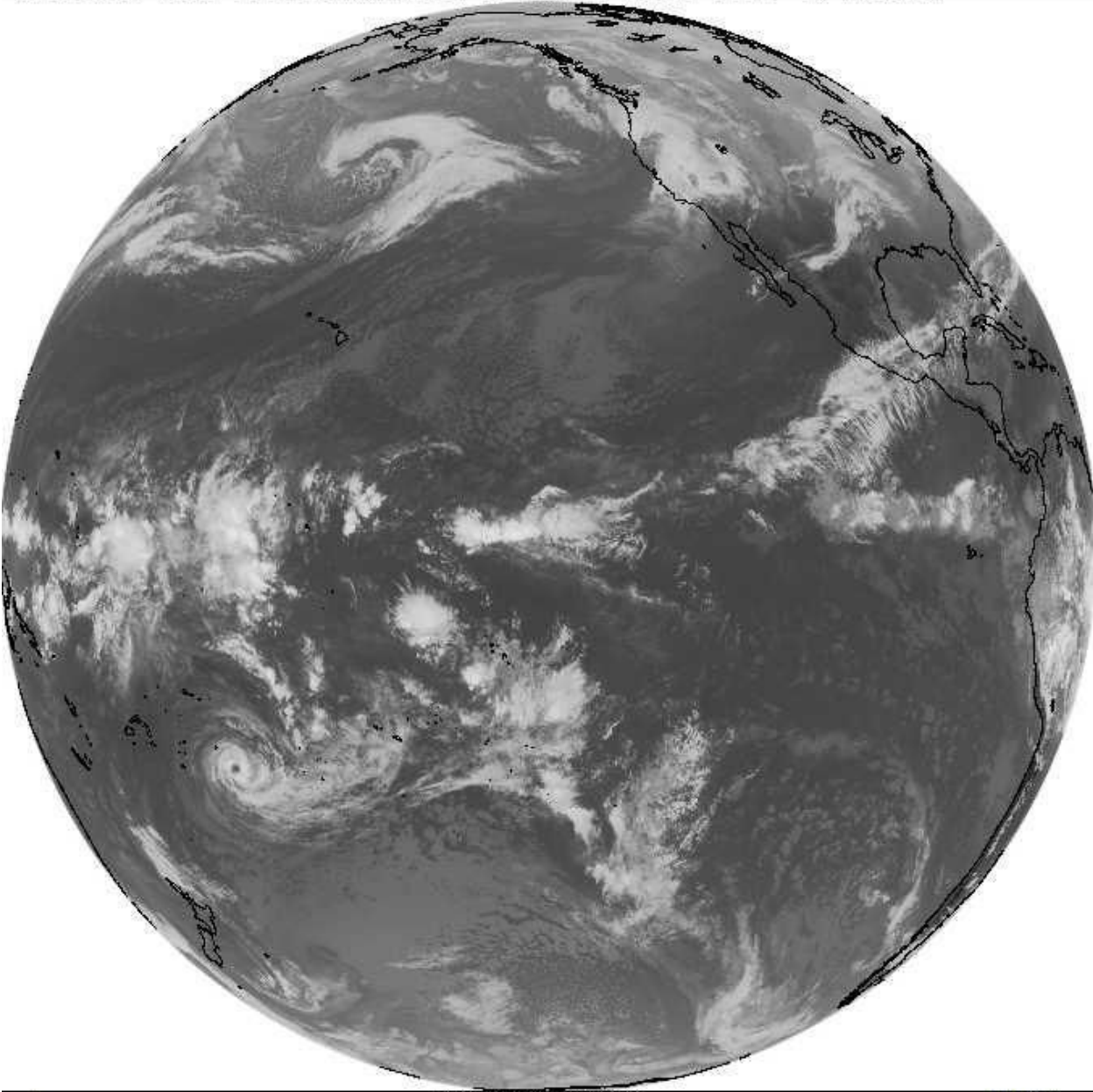
### **Tropical Outlook**

- ° Enhanced, large scale, convection between 180-150W, 0-5°N to continue thru Thu 21 Jan.
  - Confidence is moderately high, given broad agreement among GFS, FIM, and C-LIM.
  - Large scale divergent outflow likely to prevail in region 180-150W, and north of EQ
- ° Low confidence on the further development of the convection in east equatorial Pacific
  - A westward movement of the current convective region in 140-115W is expected
- ° Models suggest the large scale convection north of EQ, from 180-150W to weaken post-Jan 22
  - *The period Thu/Fri Jan21/22 provides a G-IV opportunity, pending update Jan20.*

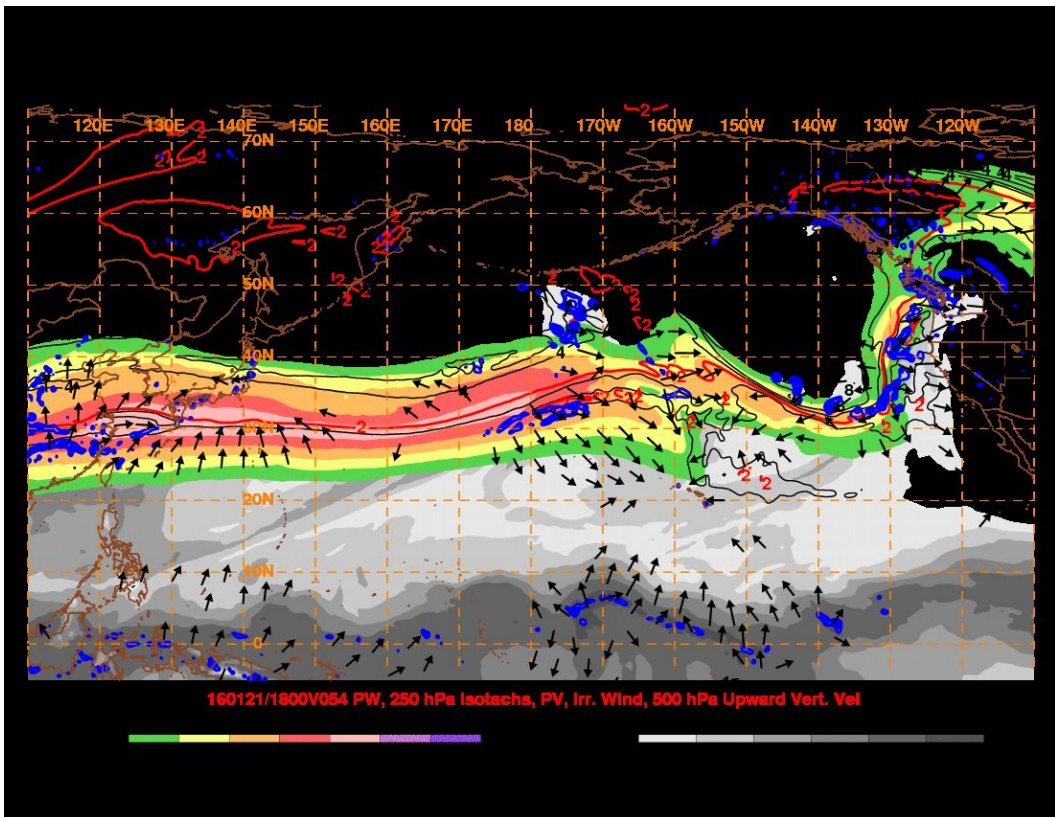
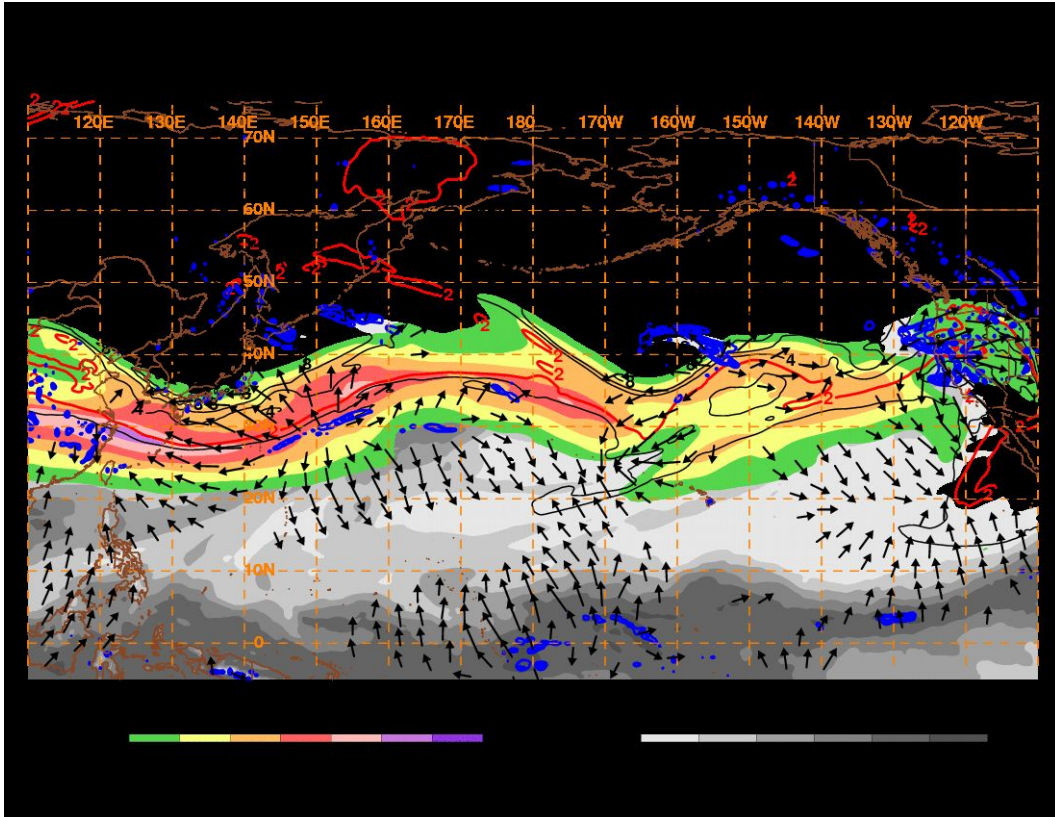
### **Midlatitude Outlook**

- ° Short term fcsts indicate two storms, affecting mostly north of San Luis Obispo.
  - heaviest pcpn in coastal range (~3") and northern Sierra (~5")
  - 2<sup>nd</sup> storm (Fri-Sat) is 1-2 punch with post-frontal cyclogenesis in proximity to NCAL
  - intensity uncertain; strong NCAL impacts possible from this combined second event
- ° Medium terms Days 5 to 10 (Sunday Jan 24- Fri Jan 29) mostly dry across CA, except far north
  - transient ridge predicted on the Pacific coast, high inter-model agreement

GOES WEST FULL DISK LONGWAVE IR 19 JAN 16 18:00 SSEC: UW-MADISON

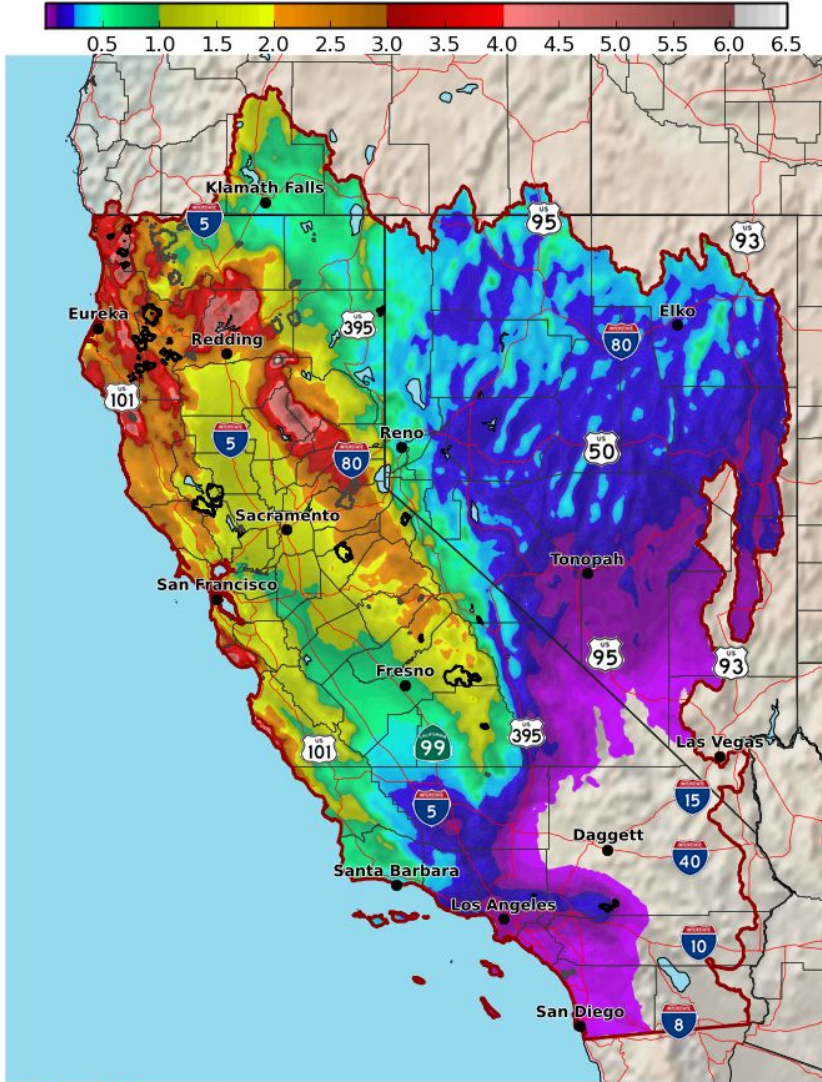


1 2016019 180000 McIDAS





**6-Day Forecast Precipitation (Inches)**  
Valid: Tue Jan 19, 2016 at 04 AM PST to Mon Jan 25, 2016 at 04 AM PST

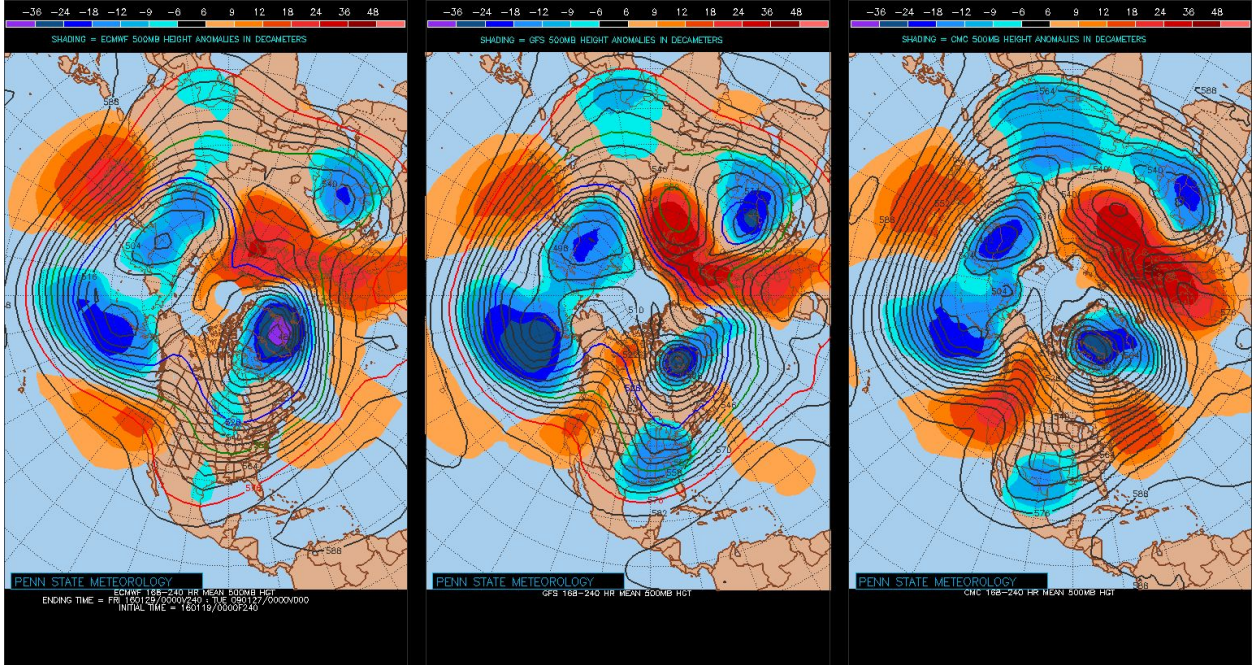


National Weather Service  
CNRFC - Sacramento, CA

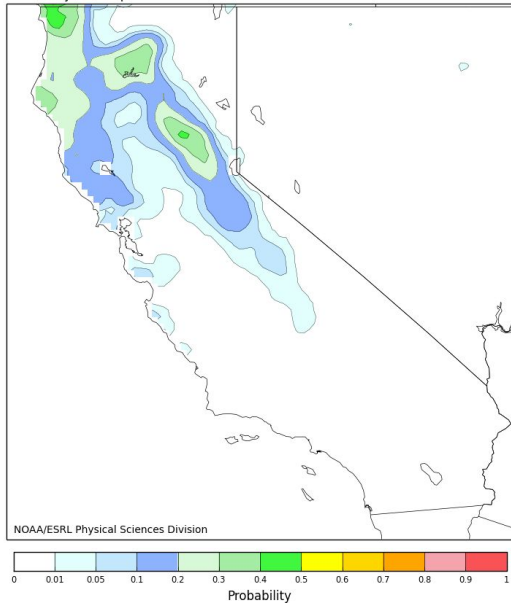
Created: 01/19/2016 07:46 AM PST

Follow Us:   

[www.cnrfc.noaa.gov](http://www.cnrfc.noaa.gov)



**120-240hr fcst from 00Z Mon Jan 18. Valid 00Z Sat Jan 23 - 00Z Thu Jan 28**  
Probability of Precip > 50mm. CSGD. 2002-2013 CCPA and Reforecast2 Calibration.



**120-240hr fcst from 00Z Mon Jan 18. Valid 00Z Sat Jan 23 - 00Z Thu Jan 28**  
Ratio. Forecast/Climo Prob of Precip > 50mm. CSGD.

