

Summary of Key Briefing Points
1030-1130am MST TUE February 9, 2016

Current Conditions as of TUE 12Z-15Z February 9

Tropics and Mid-latitudes

Over the Tropical Pacific:

- Convection: Quiet in 170W-140W, 0-10N, today
- Satellite upper level winds show 20-30kt WSW winds across much of the FD to the EQ today

Tropical Outlook

- GFS and EC broadly consistent in a gradual return of precipitation in the 0-10N, 140W-Dateline region over next few days

Midlatitude Conditions/Outlook

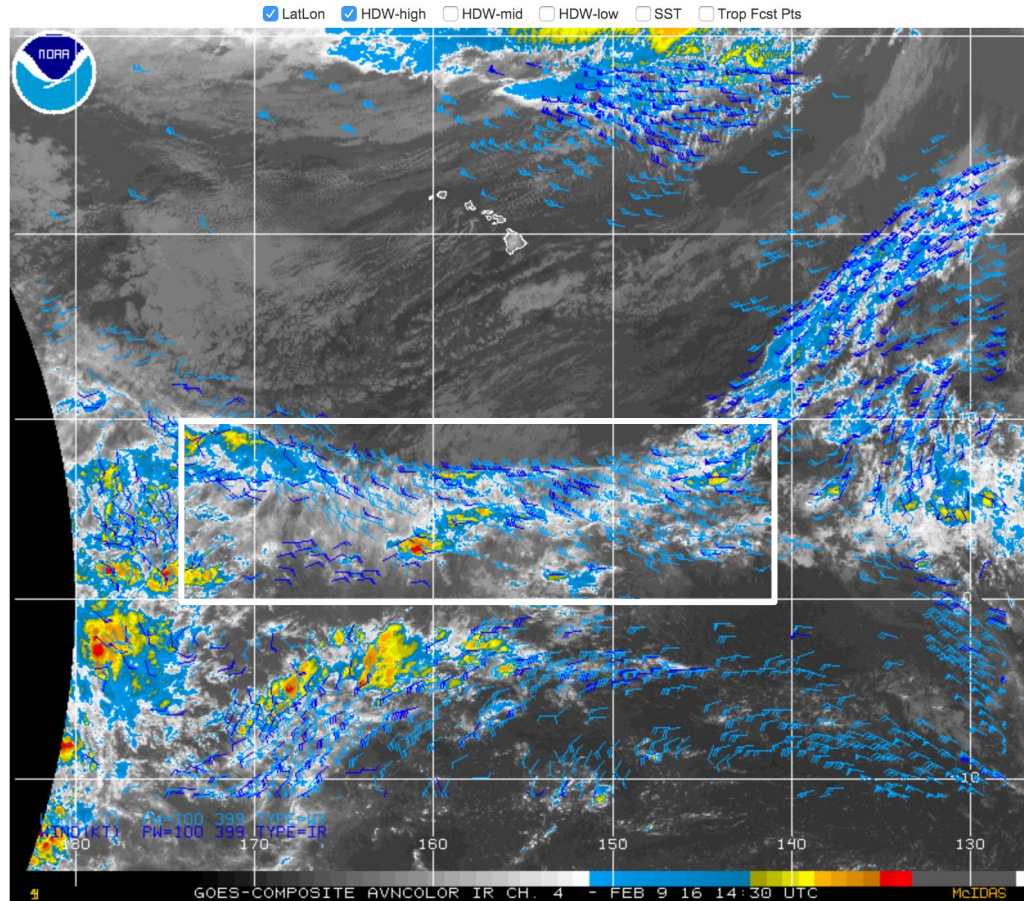
Short Term:

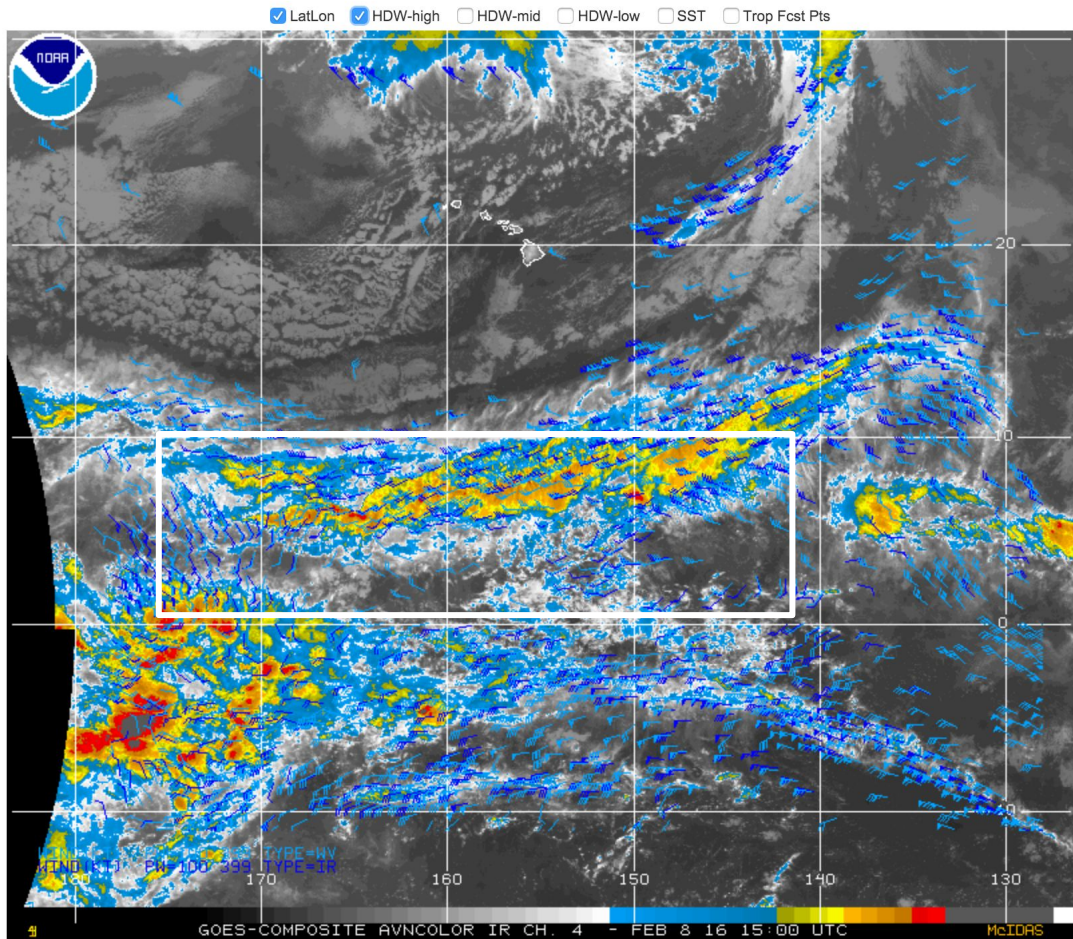
- CA mostly quiet for this week.

Medium - Long Term:

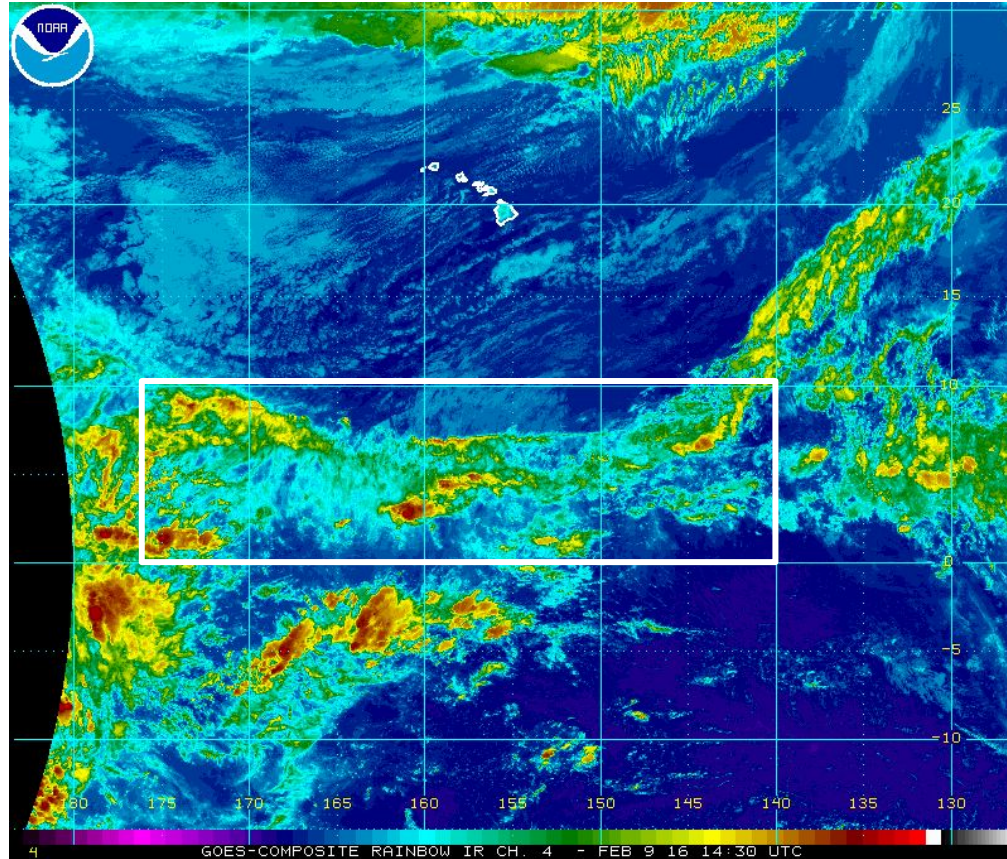
- Day 0-7 accumulated pcpn for CA shows little pcpn
- EC model indicates rains returning to NSierra, Days8-10

GOES Composite - El Niño Support – AVN Color Infrared Loop

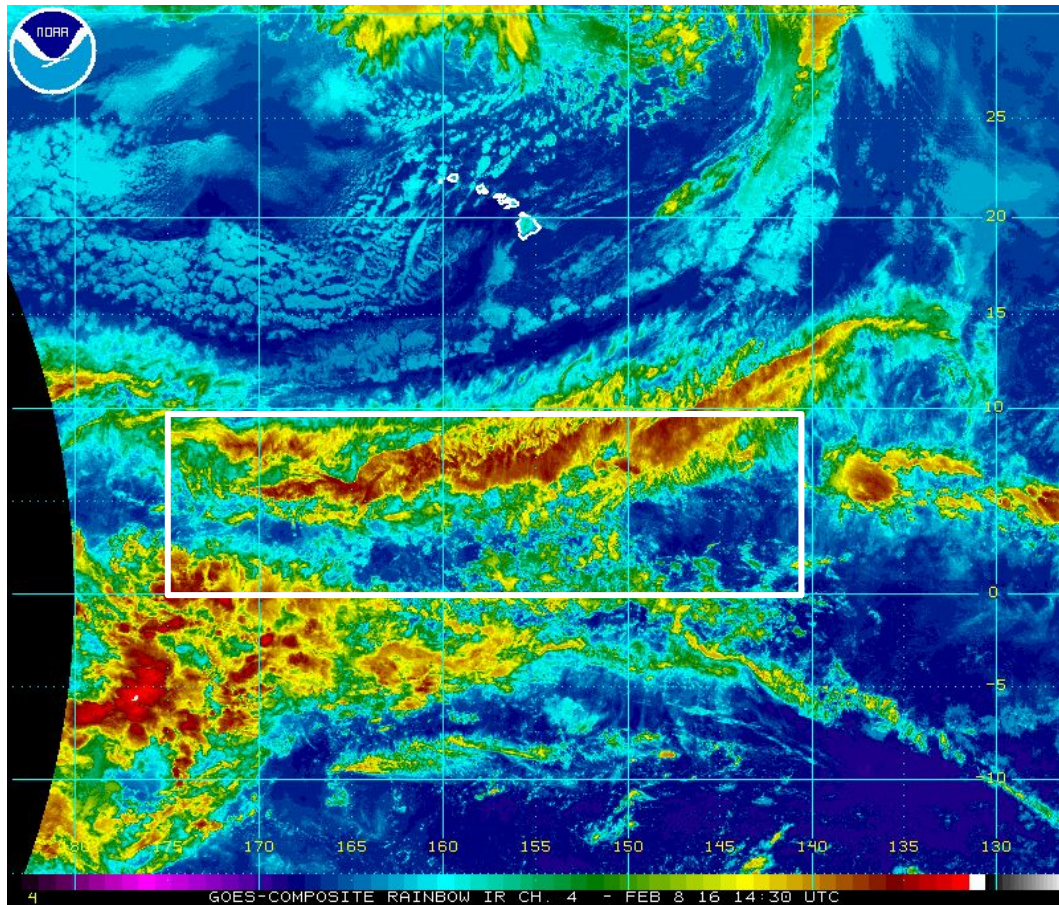




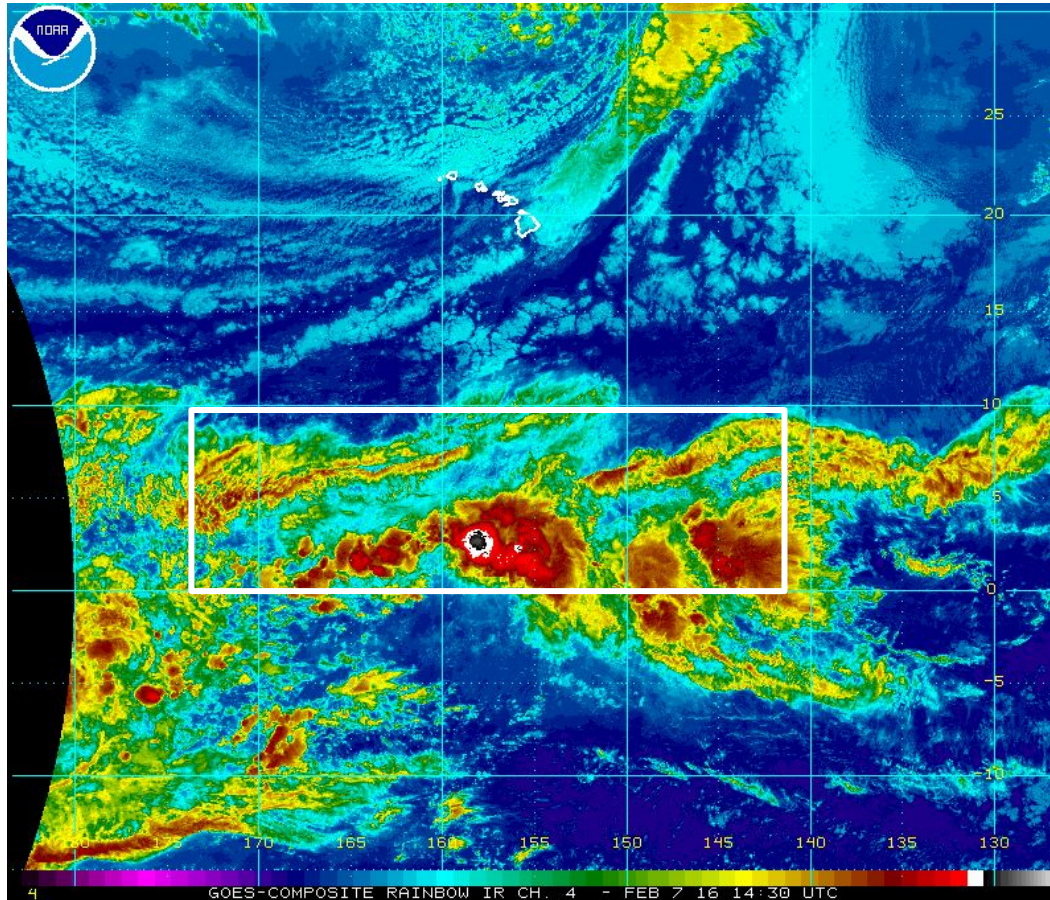
TUE 14:30Z February 9 Enhanced IR Image

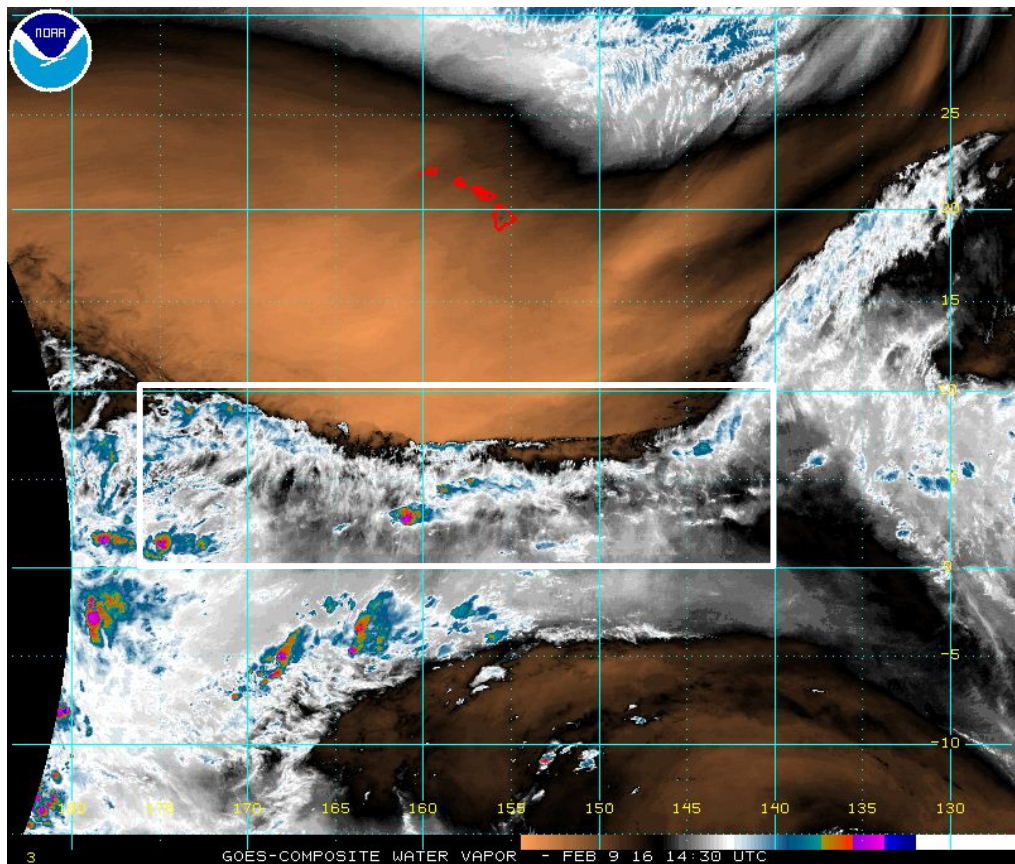


MON 14:30Z February 8 Enhanced IR Image

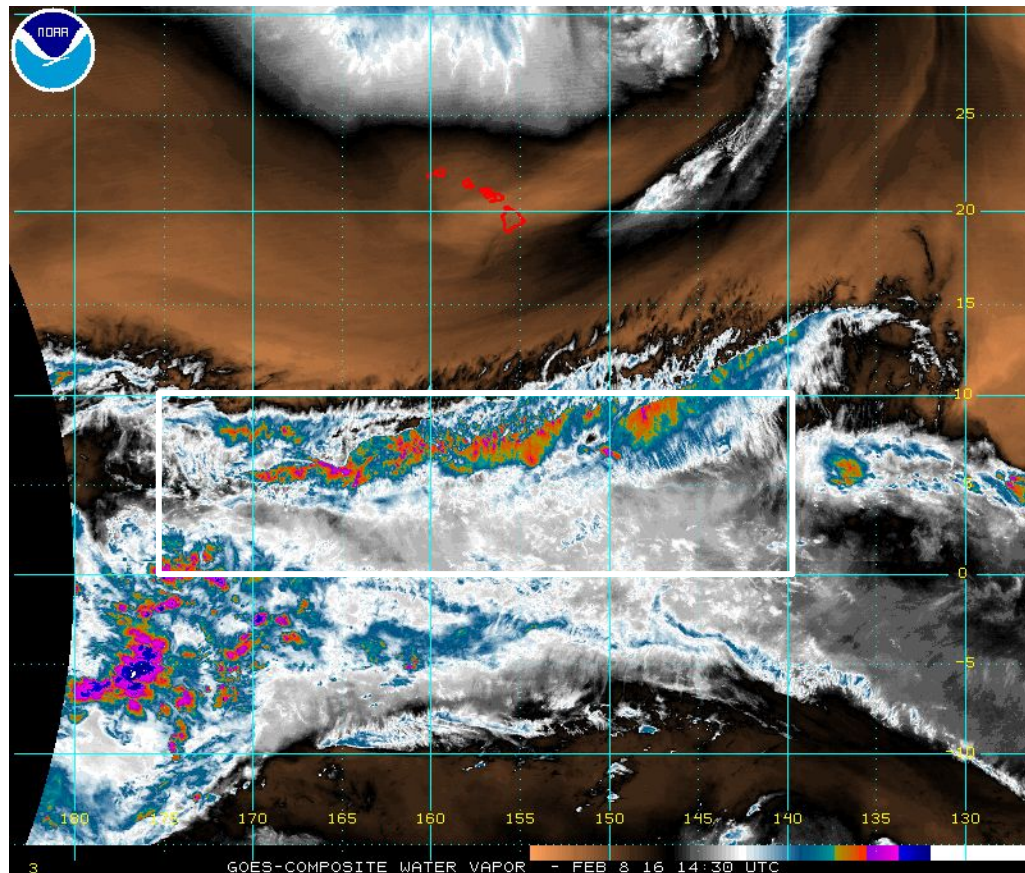


SUN 14:30Z February 7 Enhanced IR Image

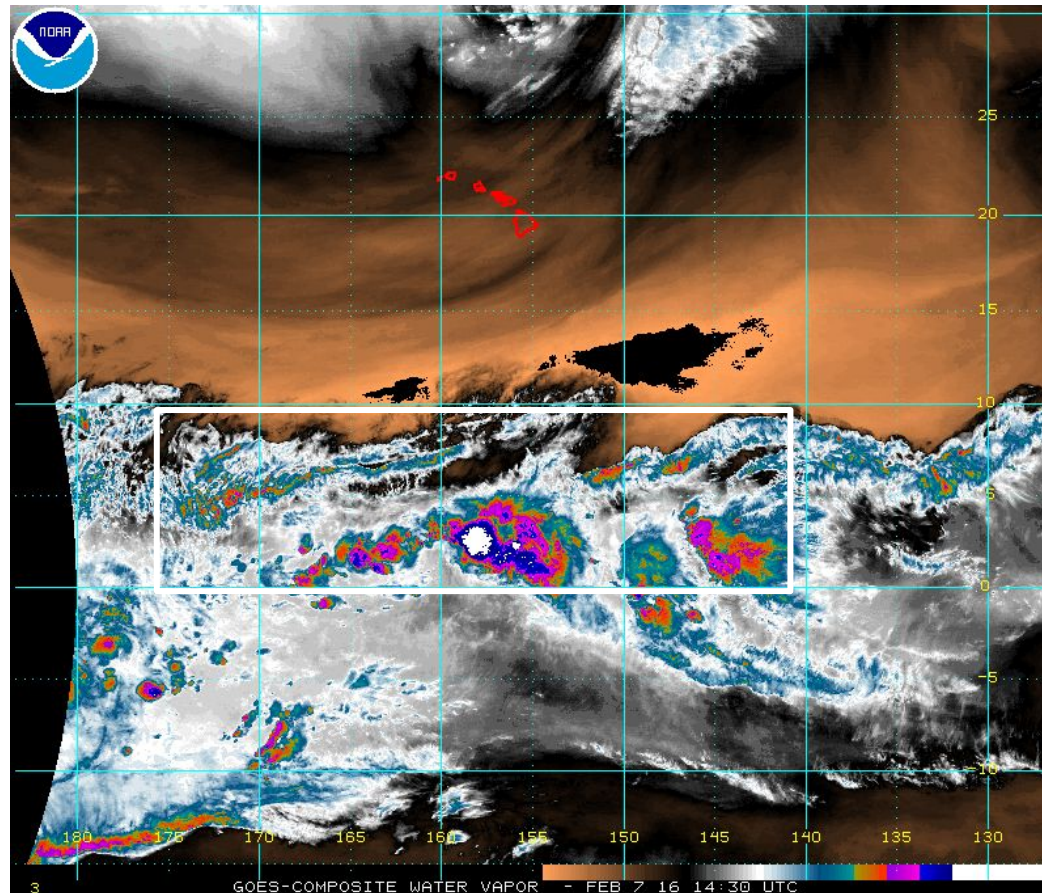




MON 14:30Z February 8 Water Vapor

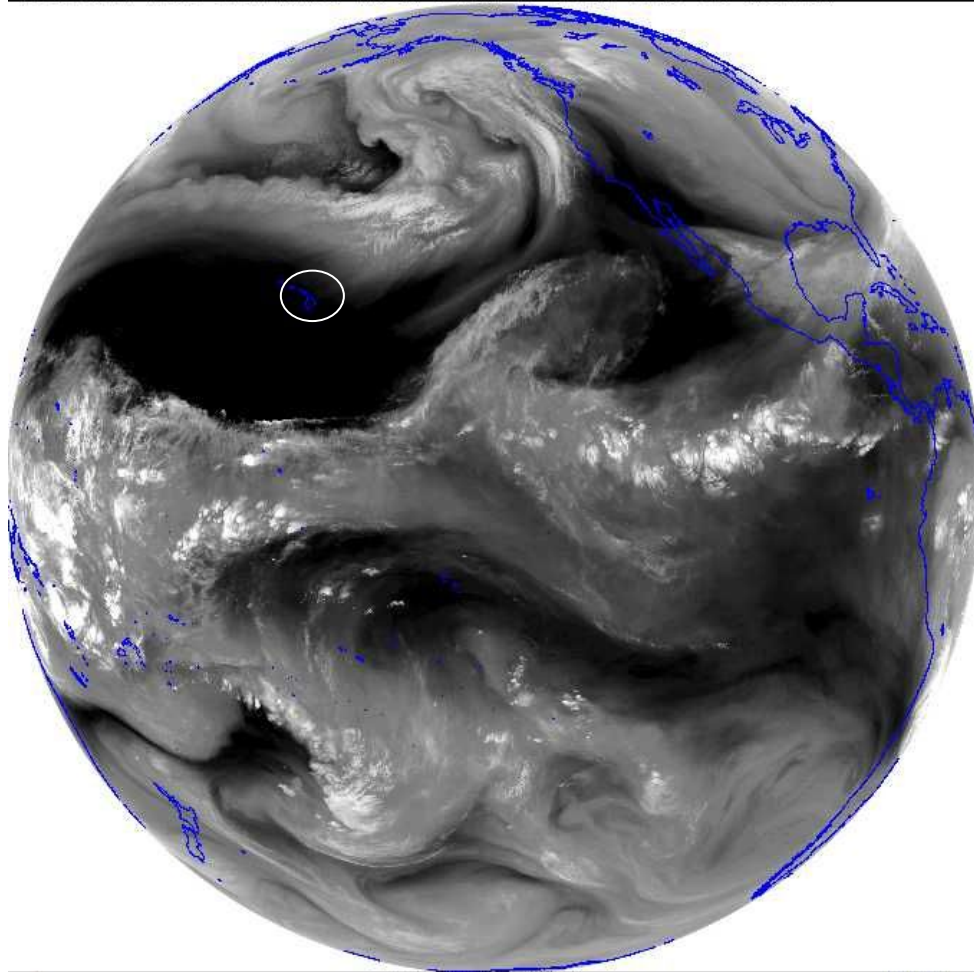


SUN 14:30Z February 7 Water Vapor



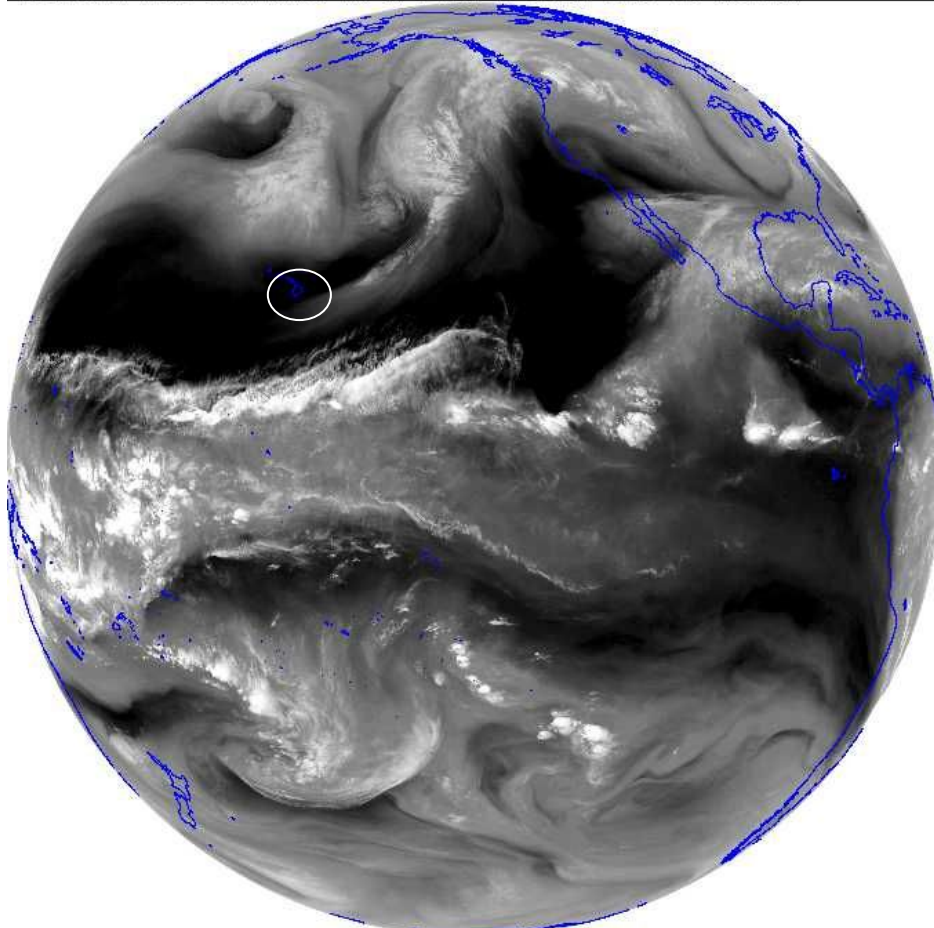
TUE 12Z February 9 GOES West Water Vapor Image

GOES WEST FULL DISK WATER VAPOR 9 FEB 16 15:00 SSEC: UW-MADISON

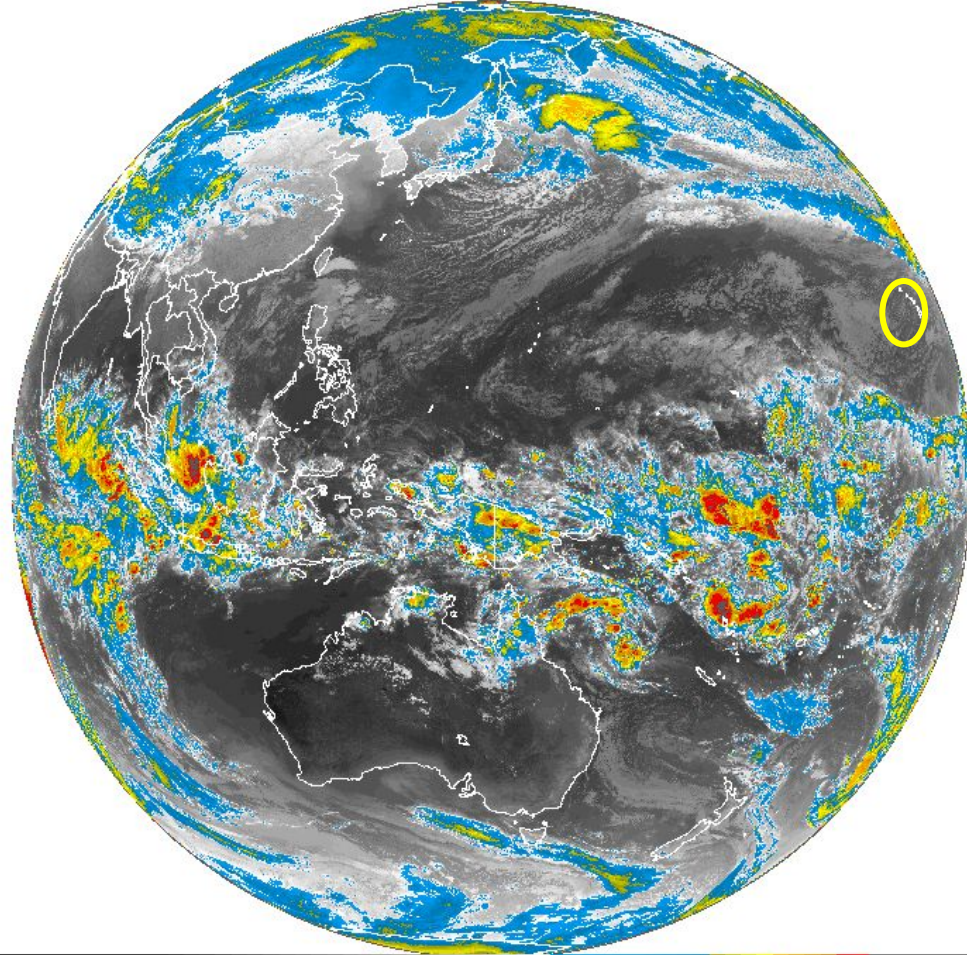


MON 15Z February 8 GOES West Water Vapor Image

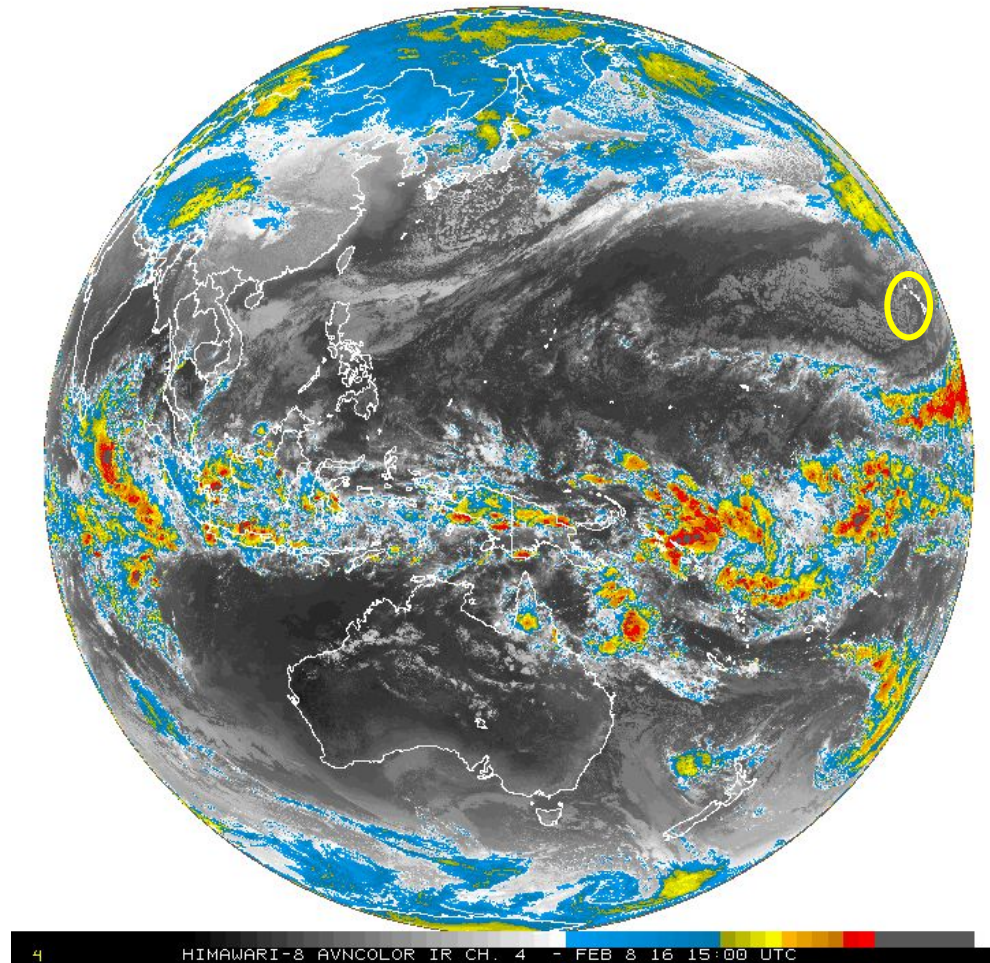
GOES WEST FULL DISK WATER VAPOR 8 FEB 16 15:00 SSEC: UW-MADISON



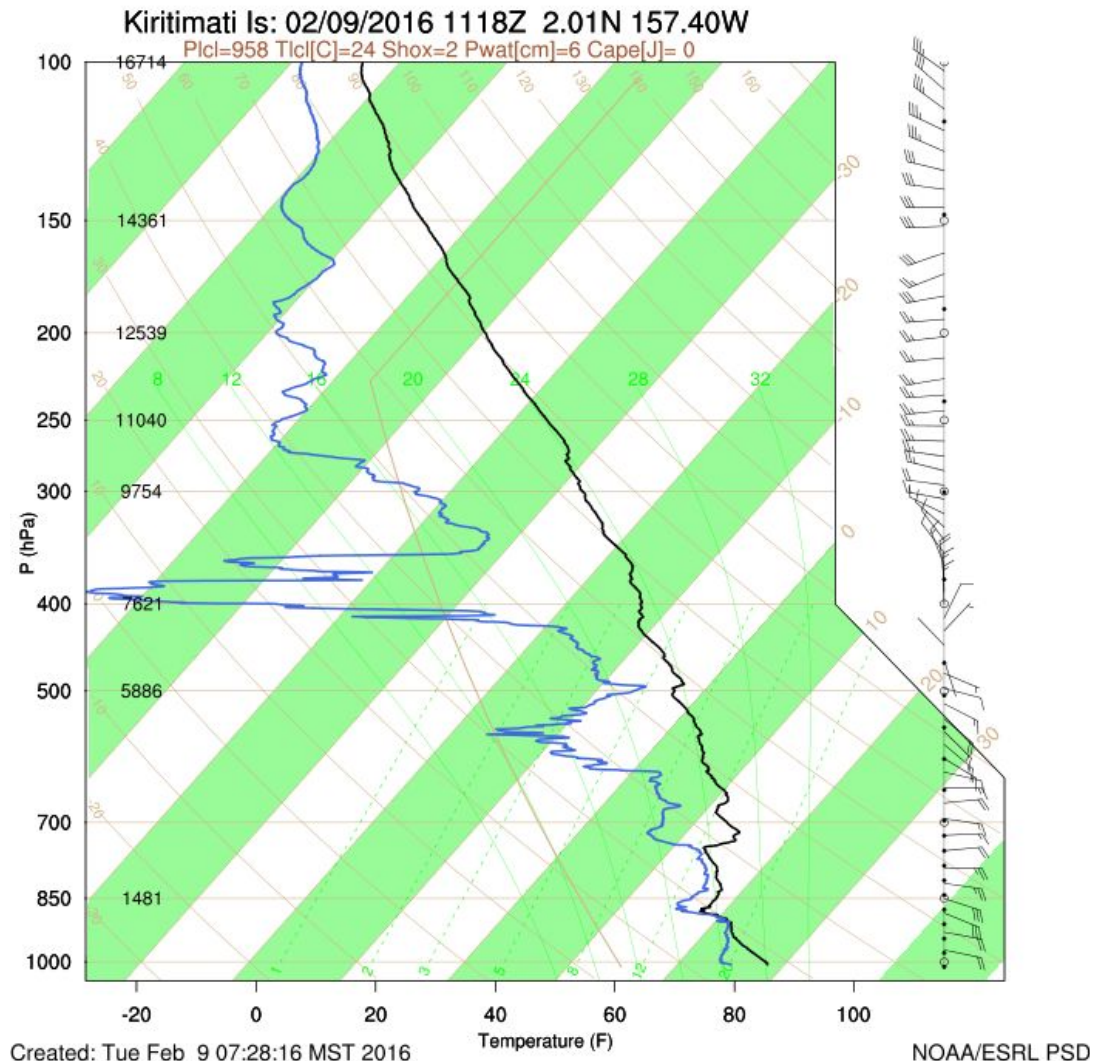
TUE 15Z February 9 GOES West Pacific



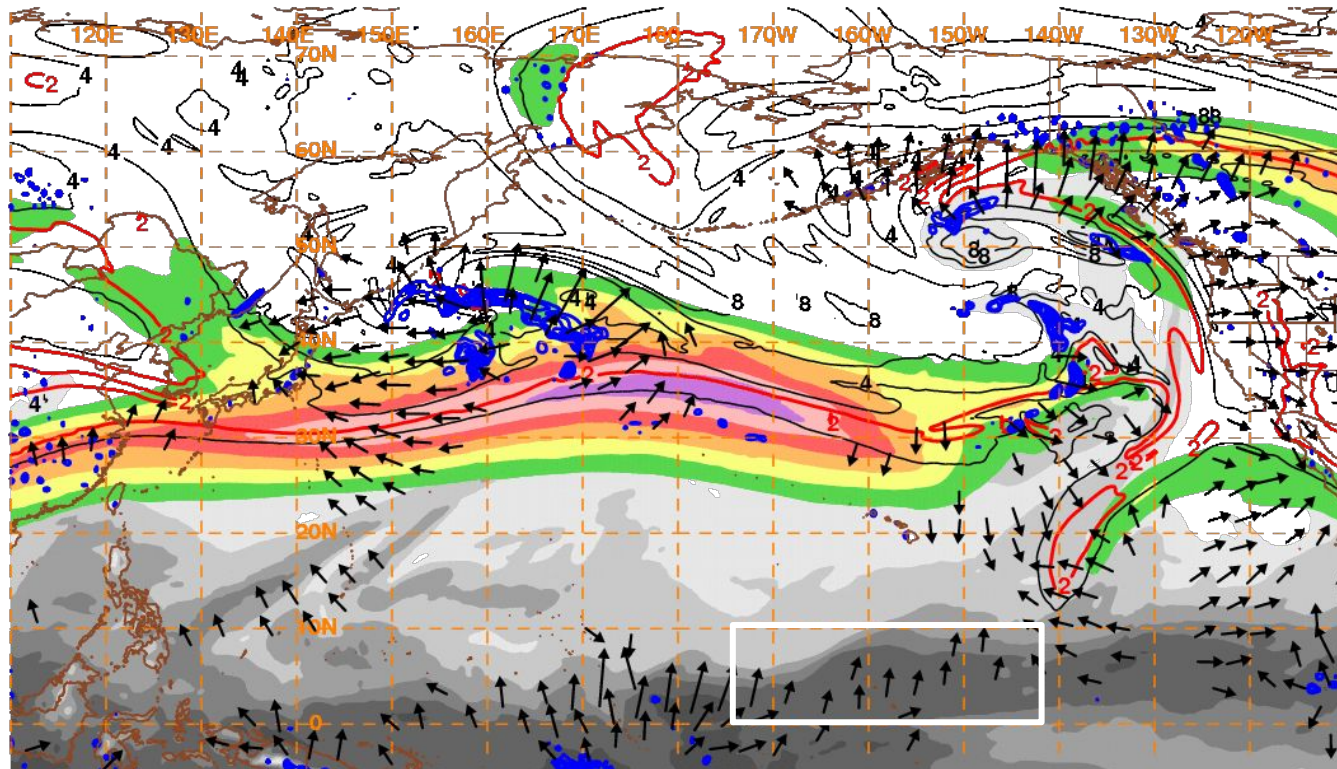
MON 15Z February 8 GOES West Pacific



Kiritimati Sonde: 1117Z
TUE Feb 9



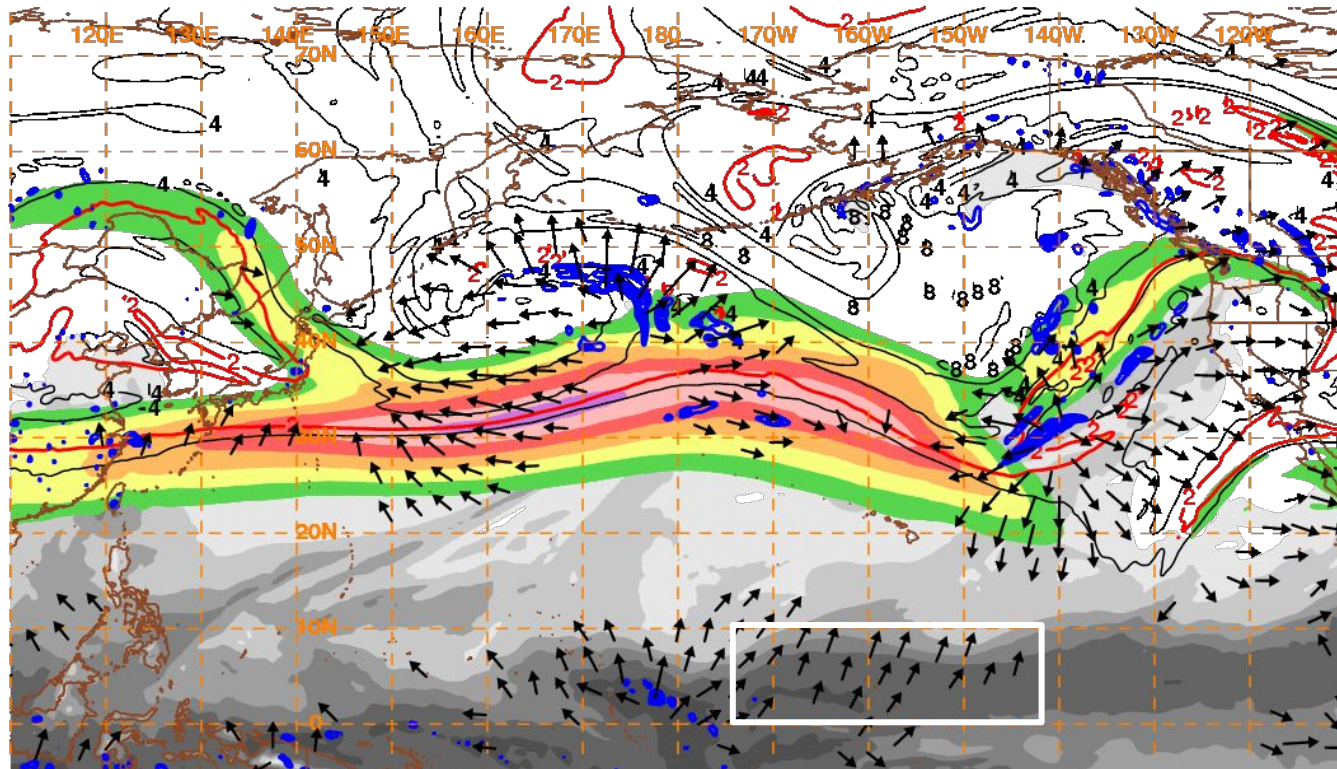
GFS 18HR FCST Valid 00Z WED Feb 10: 200 mb DIV Wind Vectors



10 m/s → 160210/0000V018 PW, 250 hPa Isotachs, PV, Irr. Wind, 500 hPa Upward Vert. Vel



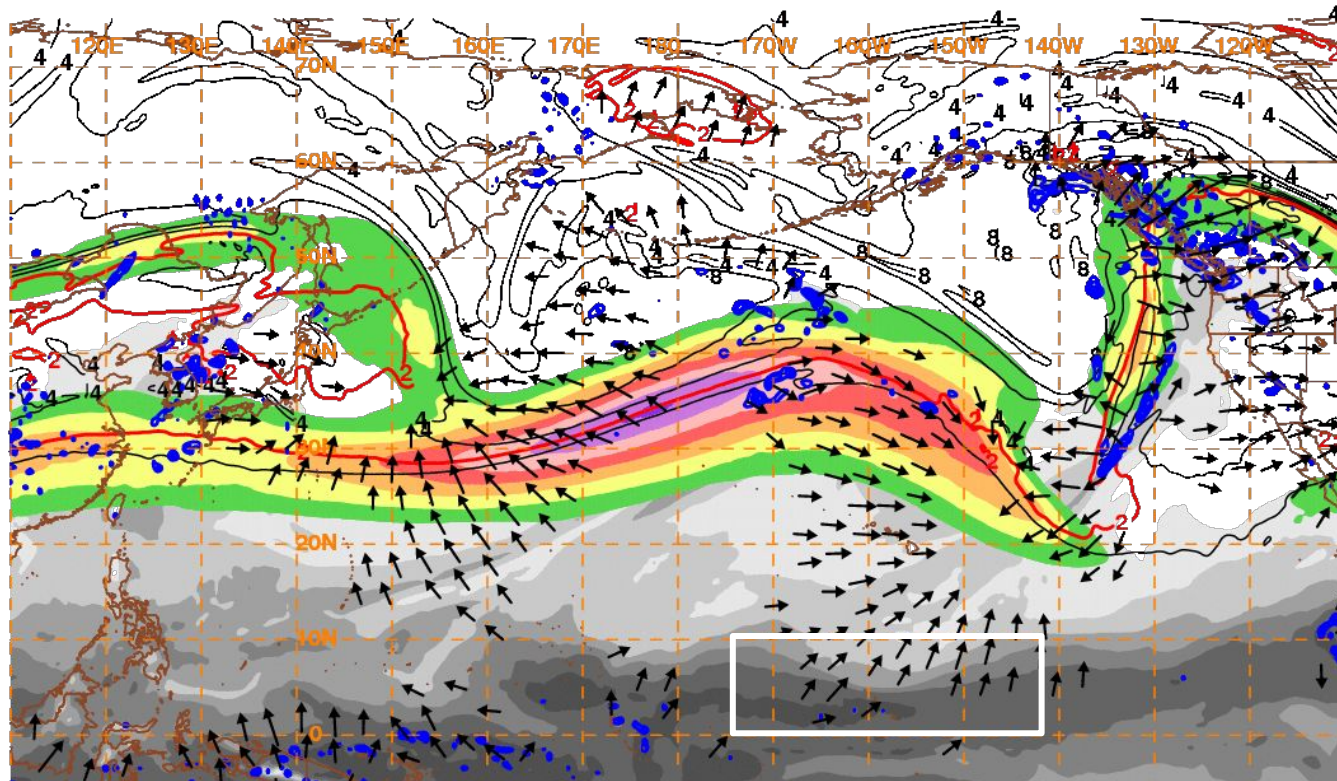
GFS 42HR FCST Valid 00Z THU Feb 11: 200 mb DIV Wind Vectors



10 m/s → 160211/0000V042 PW, 250 hPa Isotachs, PV, Irr. Wind, 500 hPa Upward Vert. Vel



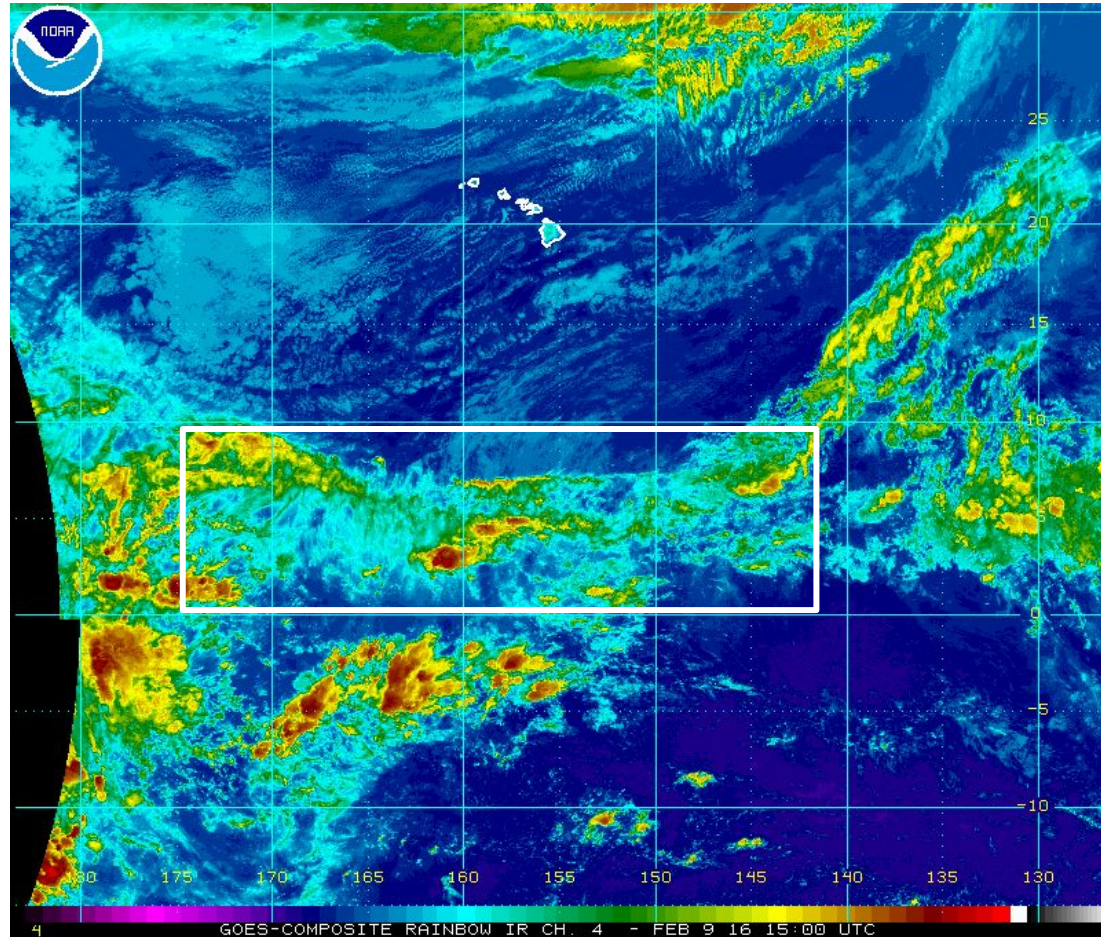
GFS 66HR FCST Valid 00Z FRI Feb 12: 200 mb DIV Wind Vectors



10 m/s → 160212/0000V066 PW, 250 hPa Isotachs, PV, Irr. Wind, 500 hPa Upward Vert. Vel



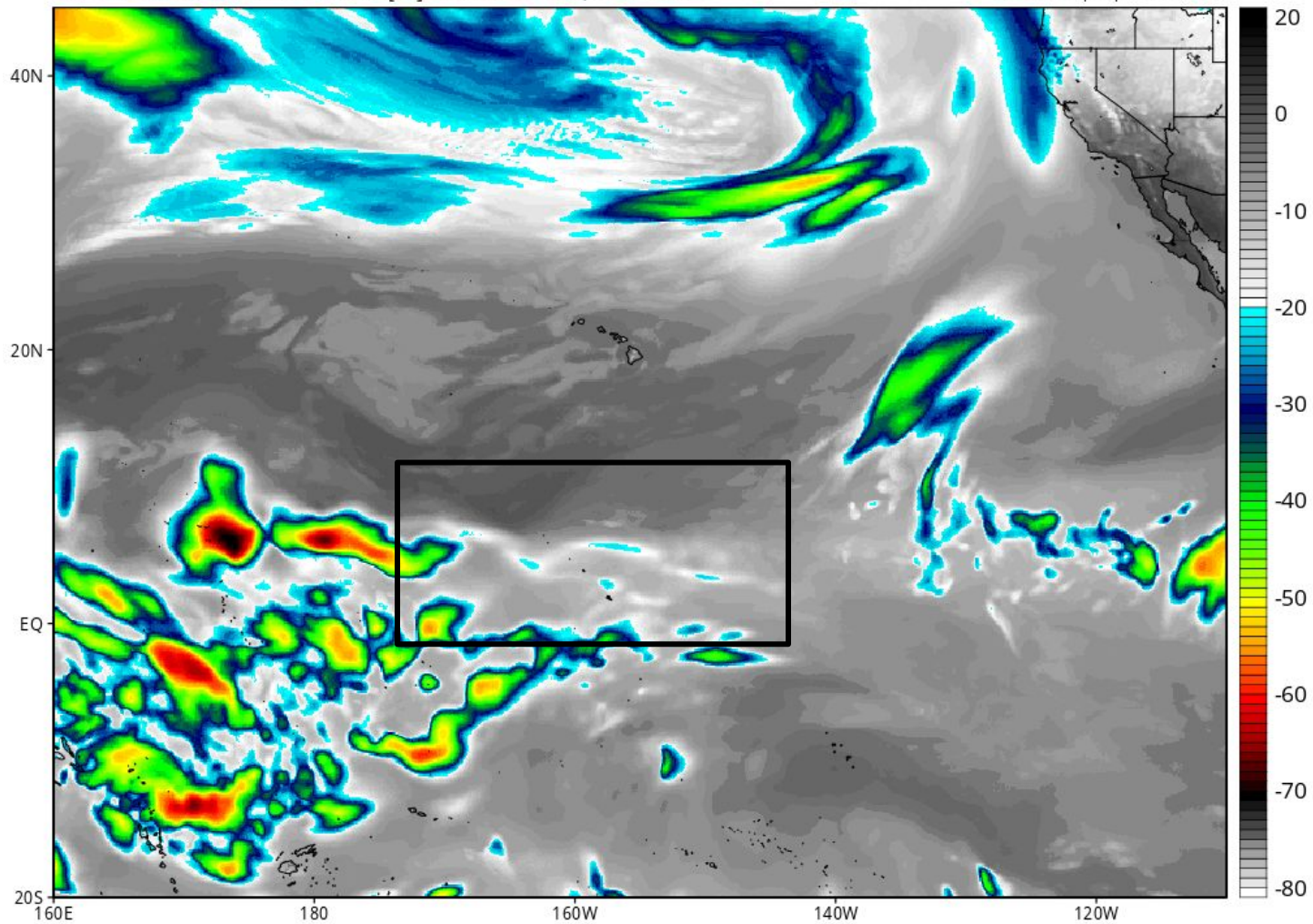
TUE 15Z February 9 Enhanced IR Image



GFS Simulated IR Brightness Temperature (°C)

Init: 12z Feb 09 2016 Forecast Hour: [12] valid at 00z Wed, Feb 10 2016

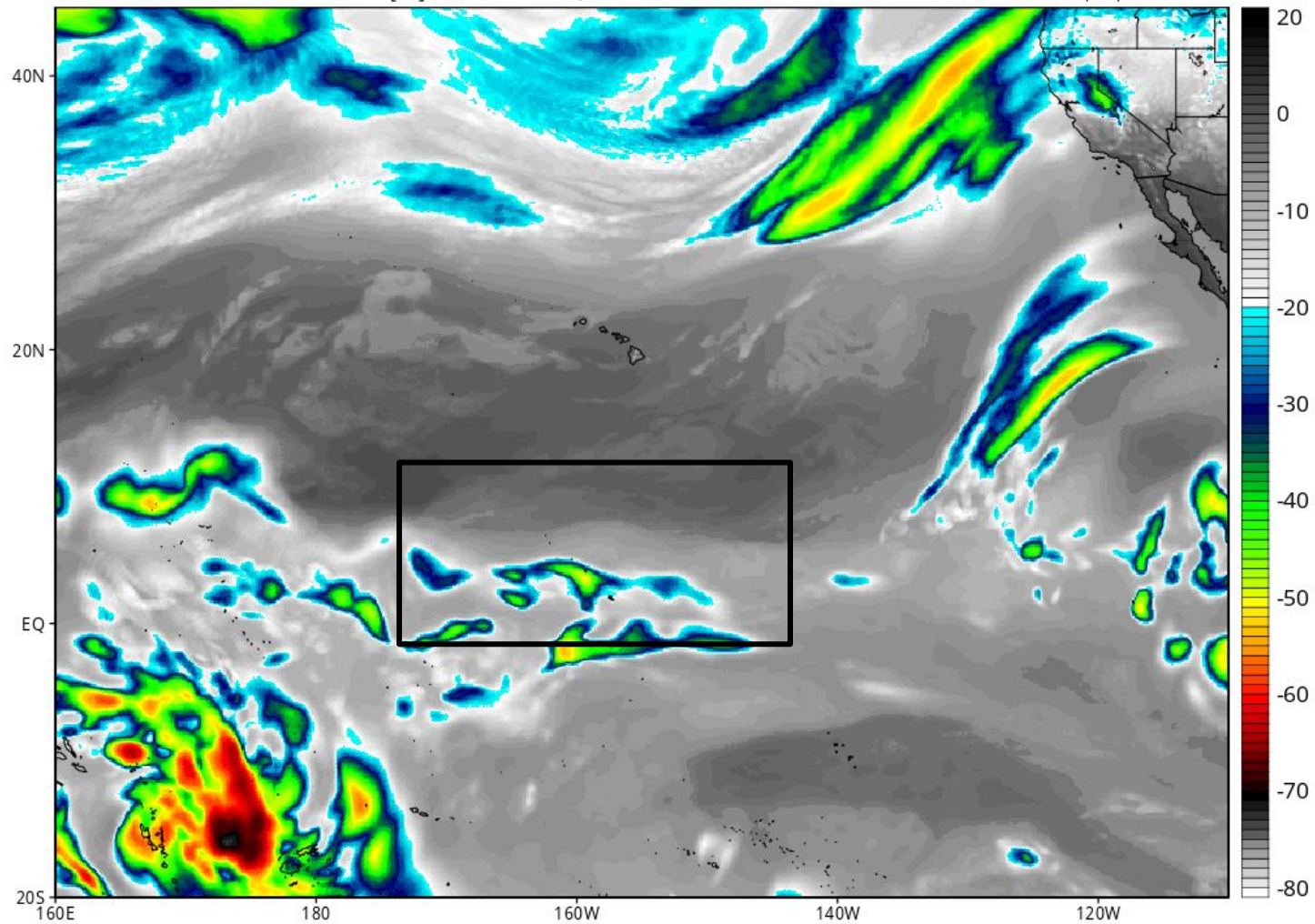
Levi Cowan | tropicaltidbits.com



GFS Simulated IR Brightness Temperature (°C)

Init: 12z Feb 09 2016 Forecast Hour: [36] valid at 00z Thu, Feb 11 2016

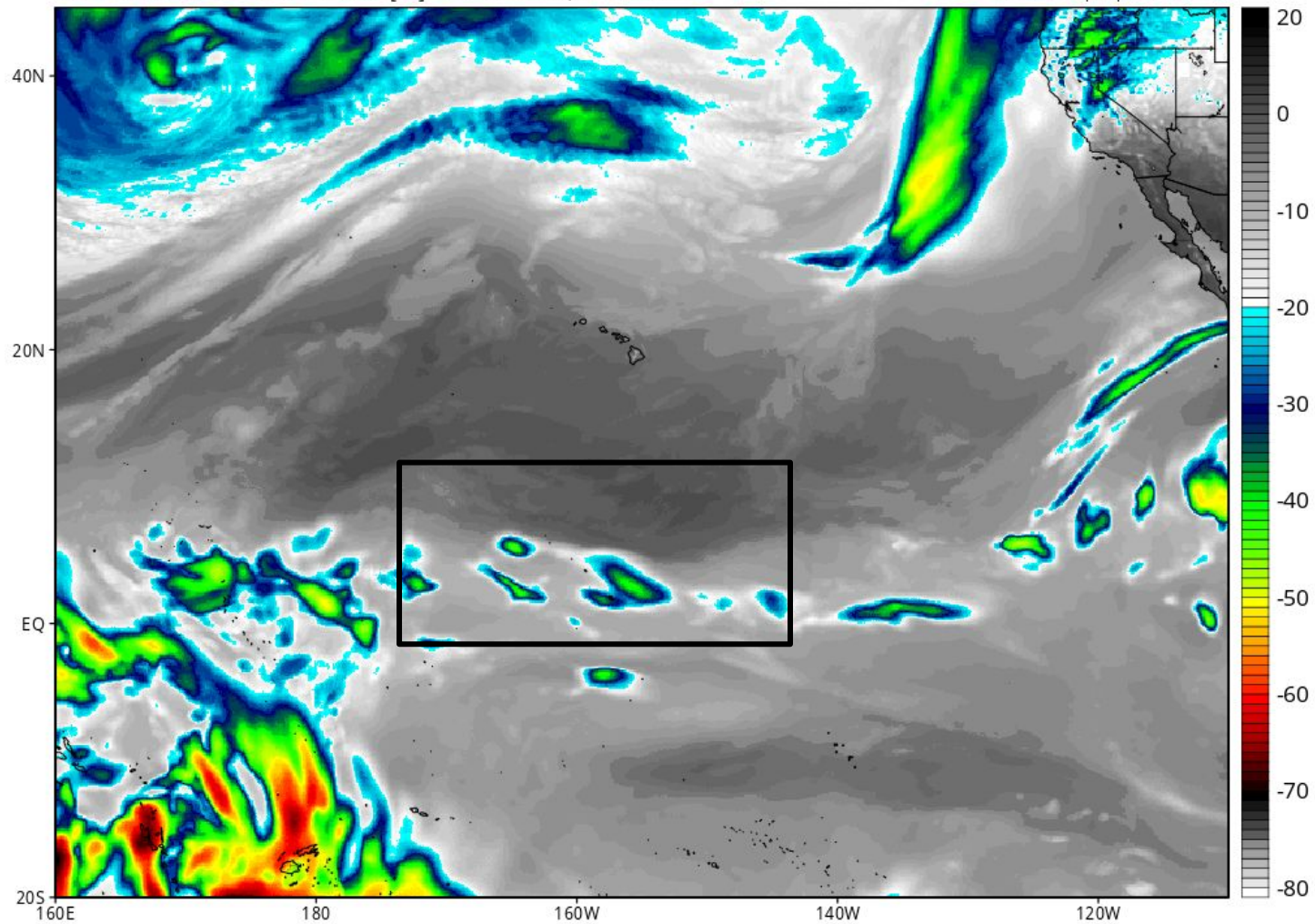
Levi Cowan | tropicaltidbits.com



GFS Simulated IR Brightness Temperature (°C)

Init: 12z Feb 09 2016 Forecast Hour: [60] valid at 00z Fri, Feb 12 2016

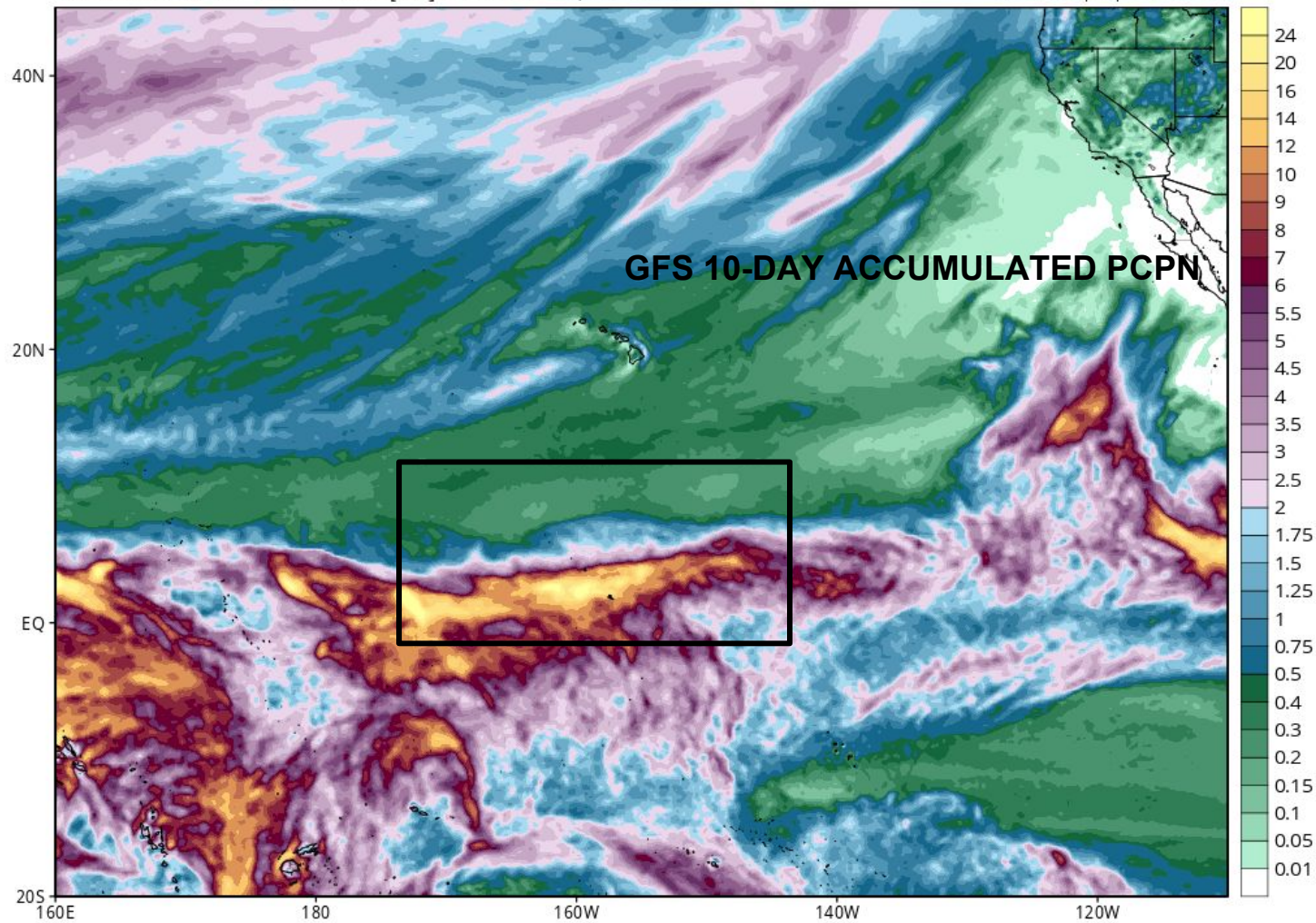
Levi Cowan | tropicaltidbits.com



GFS Total Accumulated Precipitation (inches) from 06z09Feb2016 to 06z19Feb2016

Init: 06z Feb 09 2016 Forecast Hour: [240] valid at 06z Fri, Feb 19 2016

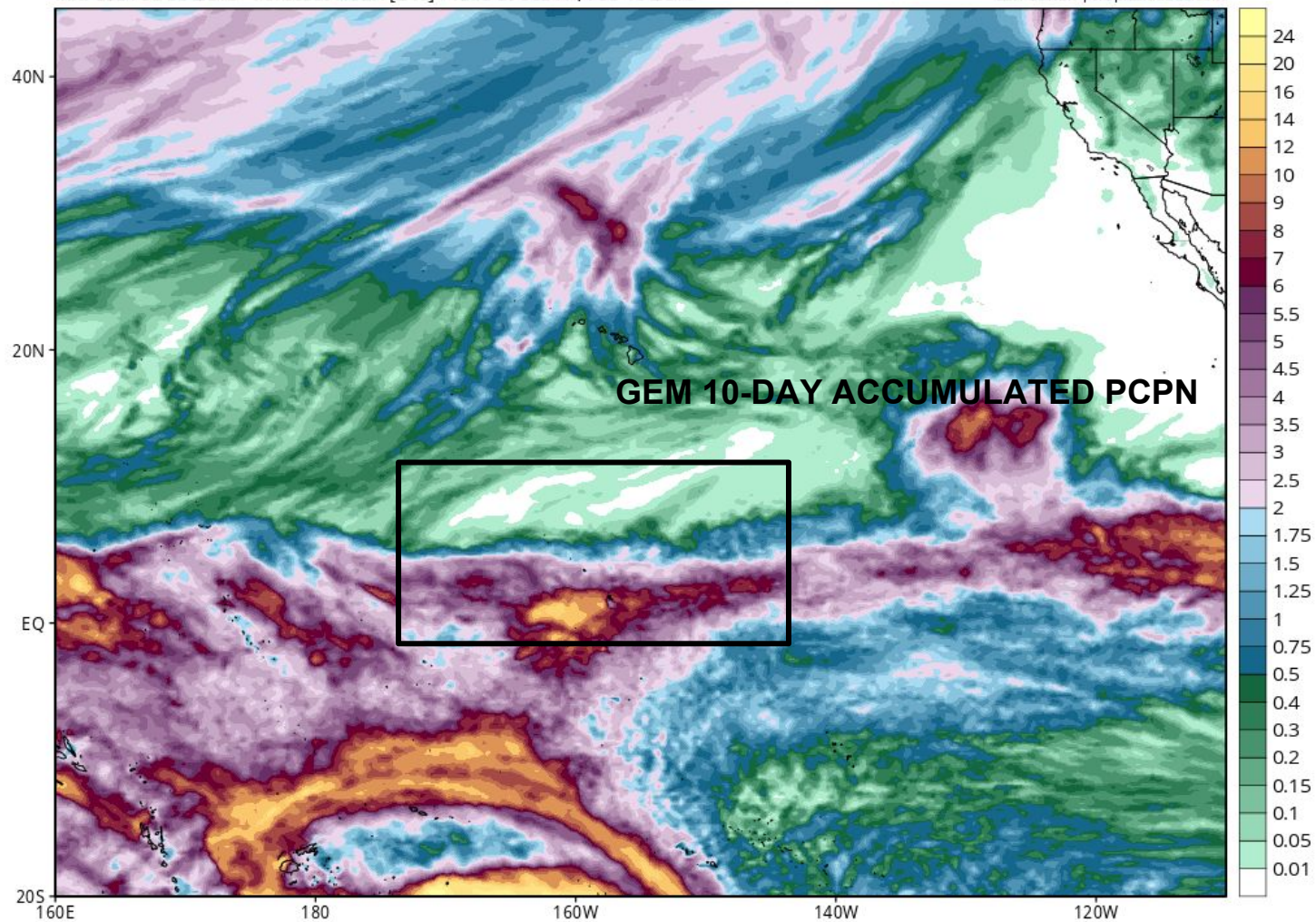
Levi Cowan | tropicaltidbits.com



GEM Total Accumulated Precipitation (inches) from 00z09Feb2016 to 00z19Feb2016

Init: 00z Feb 09 2016 Forecast Hour: [240] valid at 00z Fri, Feb 19 2016

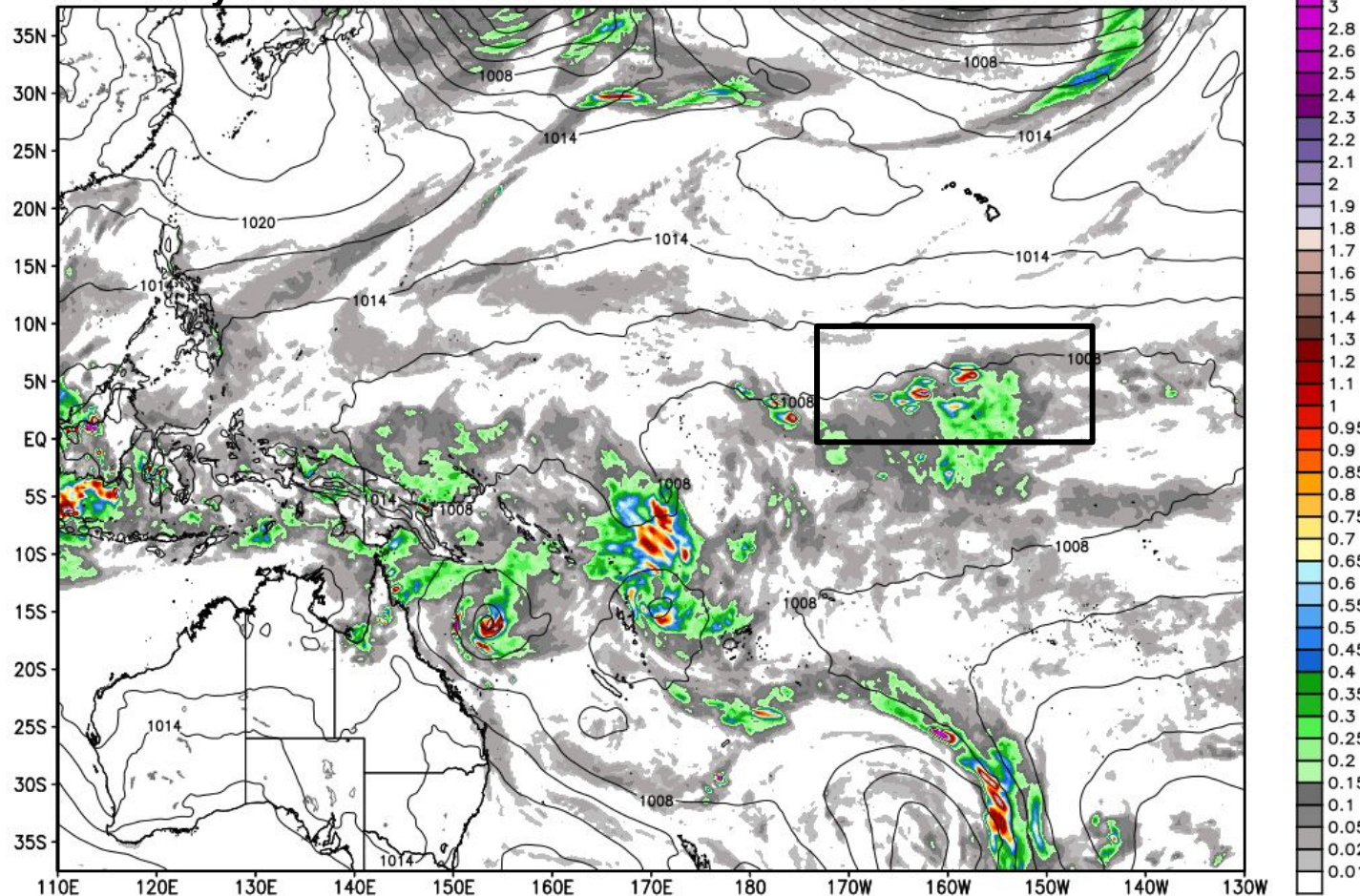
Levi Cowan | tropicaltidbits.com



ECMWF 6-hourly Precipitation [inches] between 18Z09FEB2016 -- 00Z10FEB2016 & MSLP [hPa]
INIT: 00Z09FEB2016 fx: [024] hr --> Wed 00Z10FEB2016

Courtesy WeatherBell

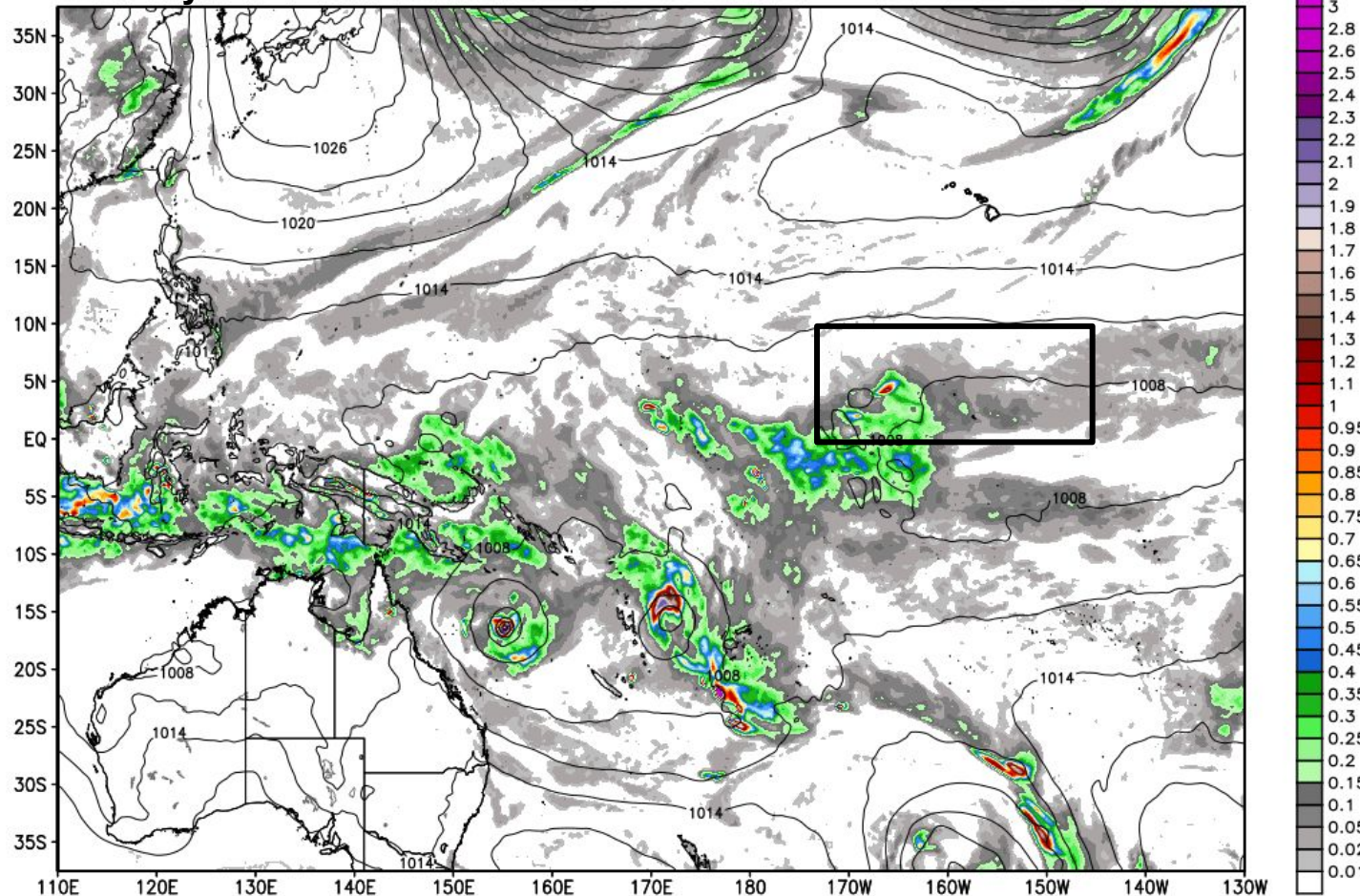
Latest ECMWF Valid 00Z WED Feb 10



ECMWF 6-hourly Precipitation [inches] between 18Z10FEB2016 -- 00Z11FEB2016 & MSLP [hPa]
INIT: 00Z09FEB2016 fx: [048] hr --> Thu 00Z11FEB2016

Courtesy WeatherBell

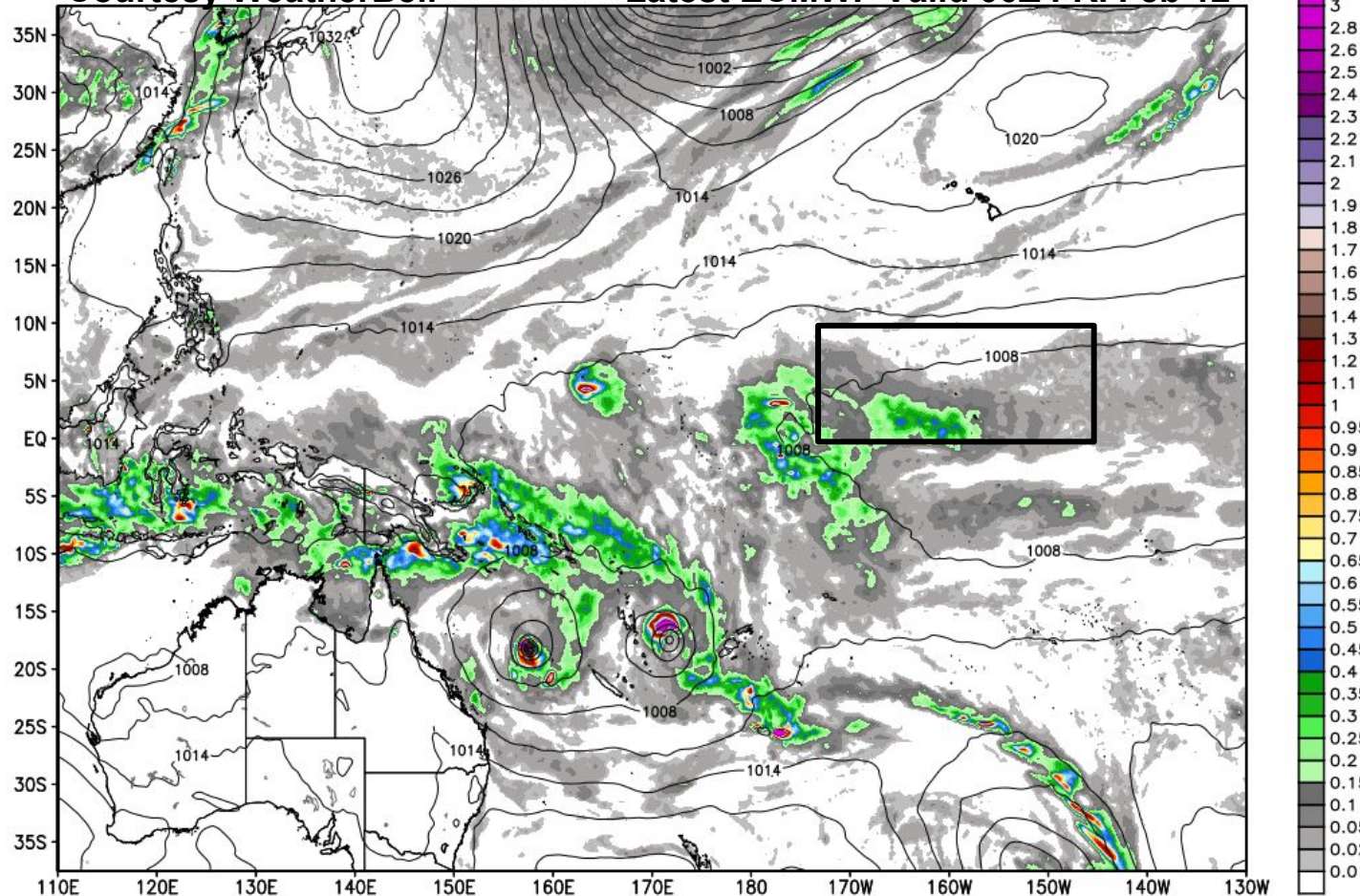
Latest ECMWF Valid 00Z THU Feb 11



ECMWF 6-hourly Precipitation [inches] between 18Z11FEB2016 -- 00Z12FEB2016 & MSLP [hPa]
INIT: 00Z09FEB2016 fx: [072] hr --> Fri 00Z12FEB2016

Courtesy WeatherBell

Latest ECMWF Valid 00Z FRI Feb 12



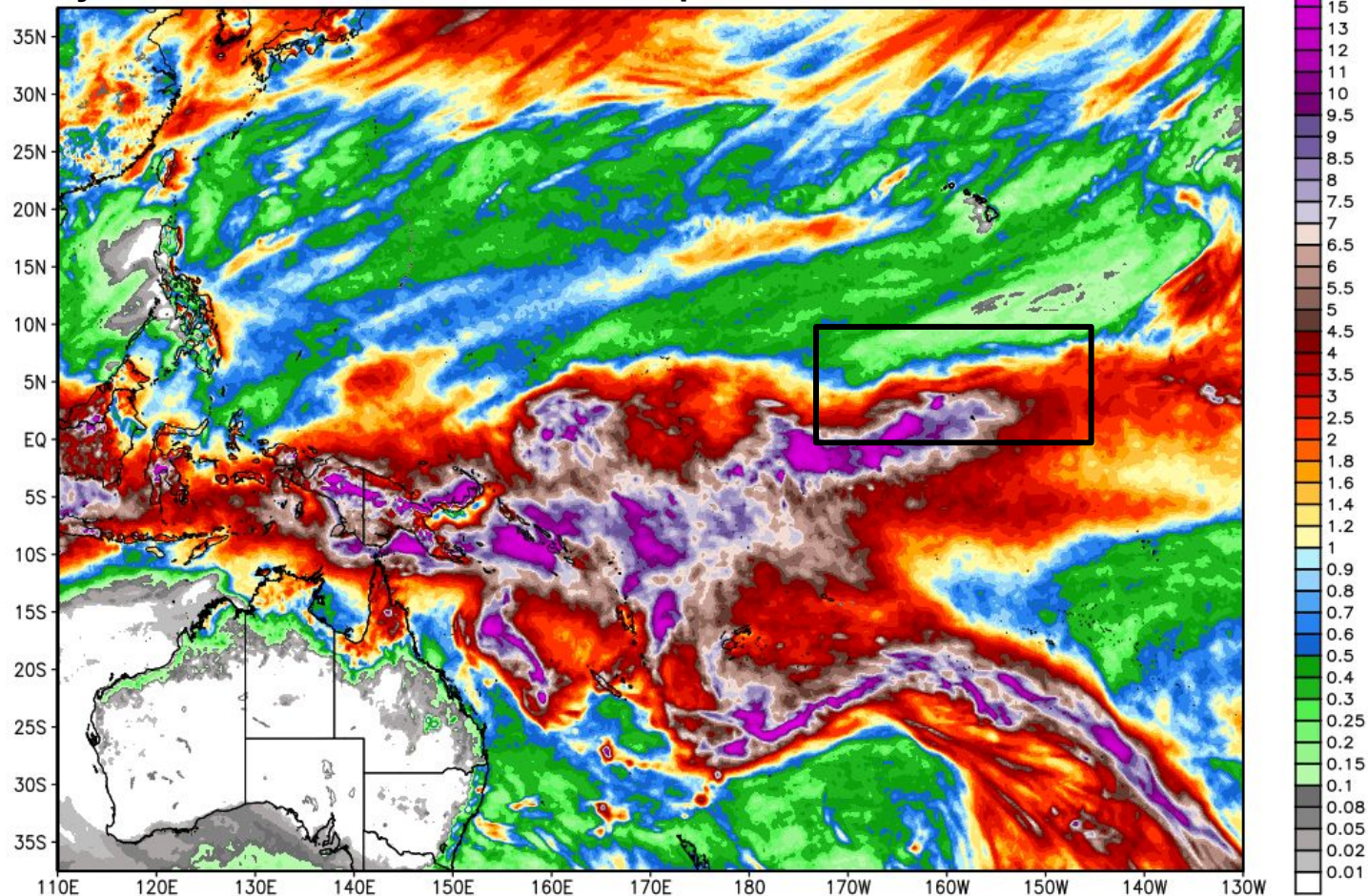
ECMWF Total Precipitation [inches] between 00Z09FEB2016 -- 00Z19FEB2016

INIT: 00Z09FEB2016 fr: [240] hr --> Fri 00Z19FEB2016

Courtesy WeatherBell

10-DAY Pcpn Latest ECMWF END 00Z FRI Feb 19

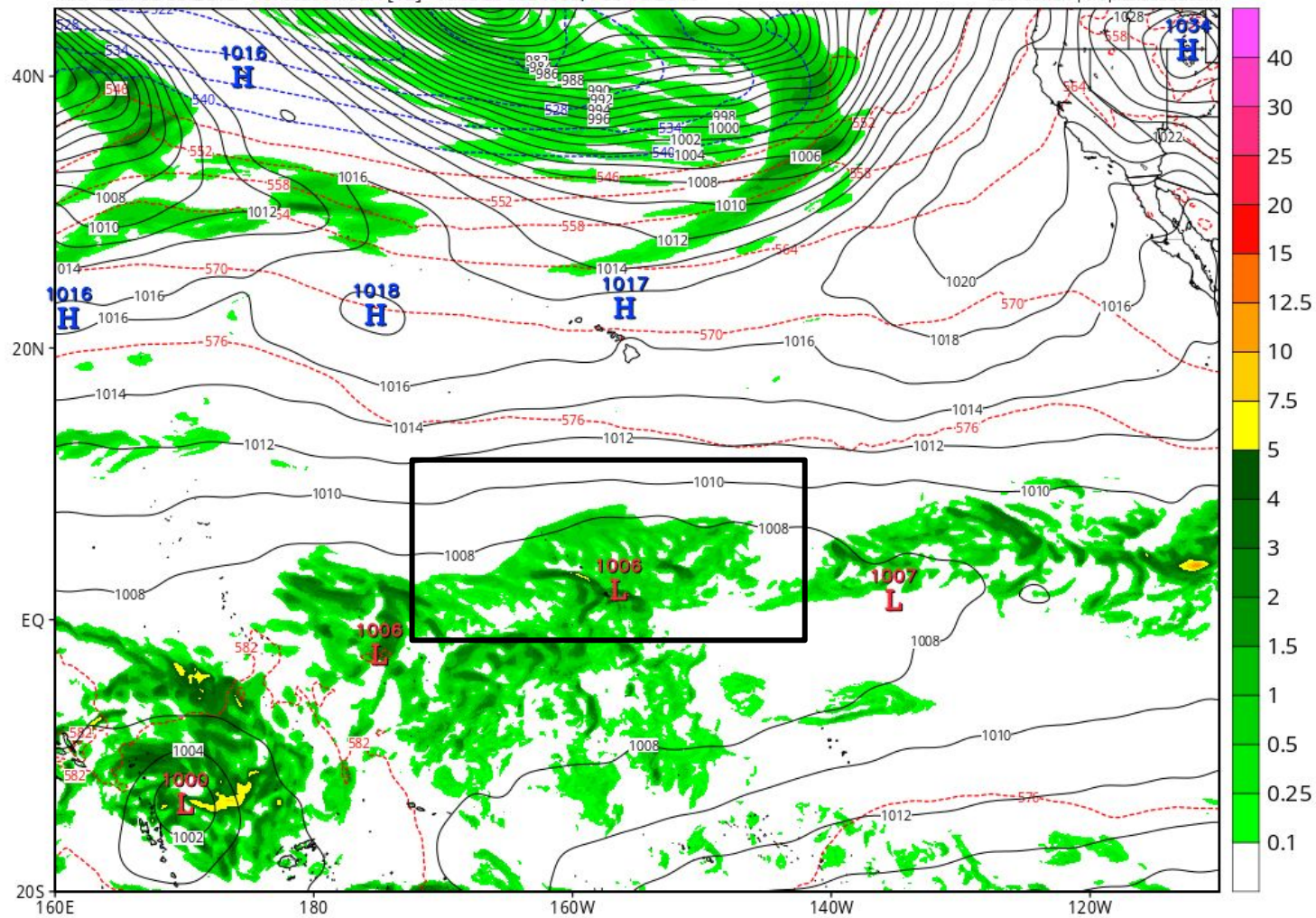
Max 39.3 in



GFS 6-hour Averaged Precip Rate (mm/hr), MSLP (hPa) & 1000-500mb Thickness (dam)

Init: 12z Feb 09 2016 Forecast Hour: [12] valid at 00z Wed, Feb 10 2016

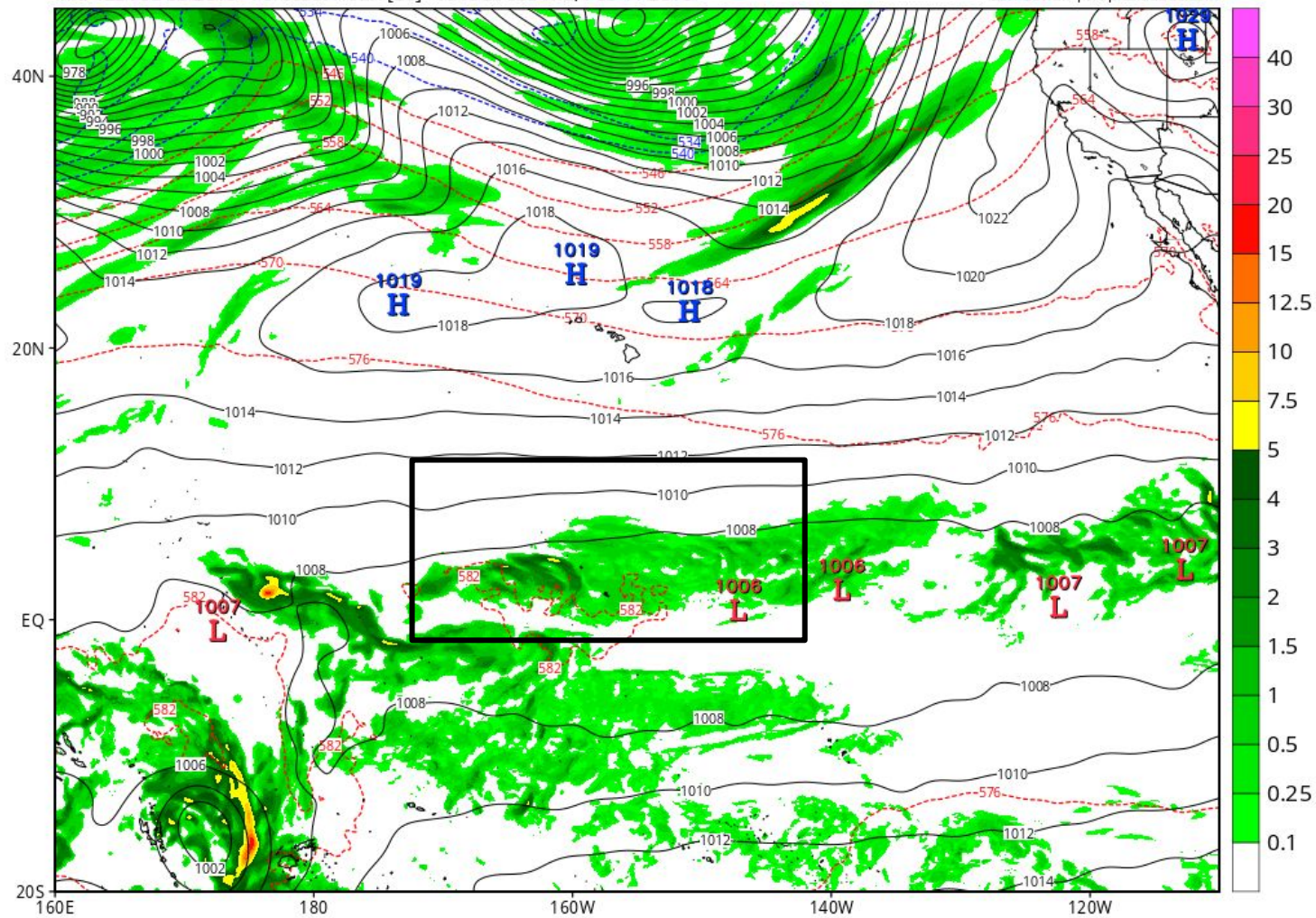
Levi Cowan | tropicaltidbits.com



GFS 6-hour Averaged Precip Rate (mm/hr), MSLP (hPa) & 1000-500mb Thickness (dam)

Init: 12z Feb 09 2016 Forecast Hour: [36] valid at 00z Thu, Feb 11 2016

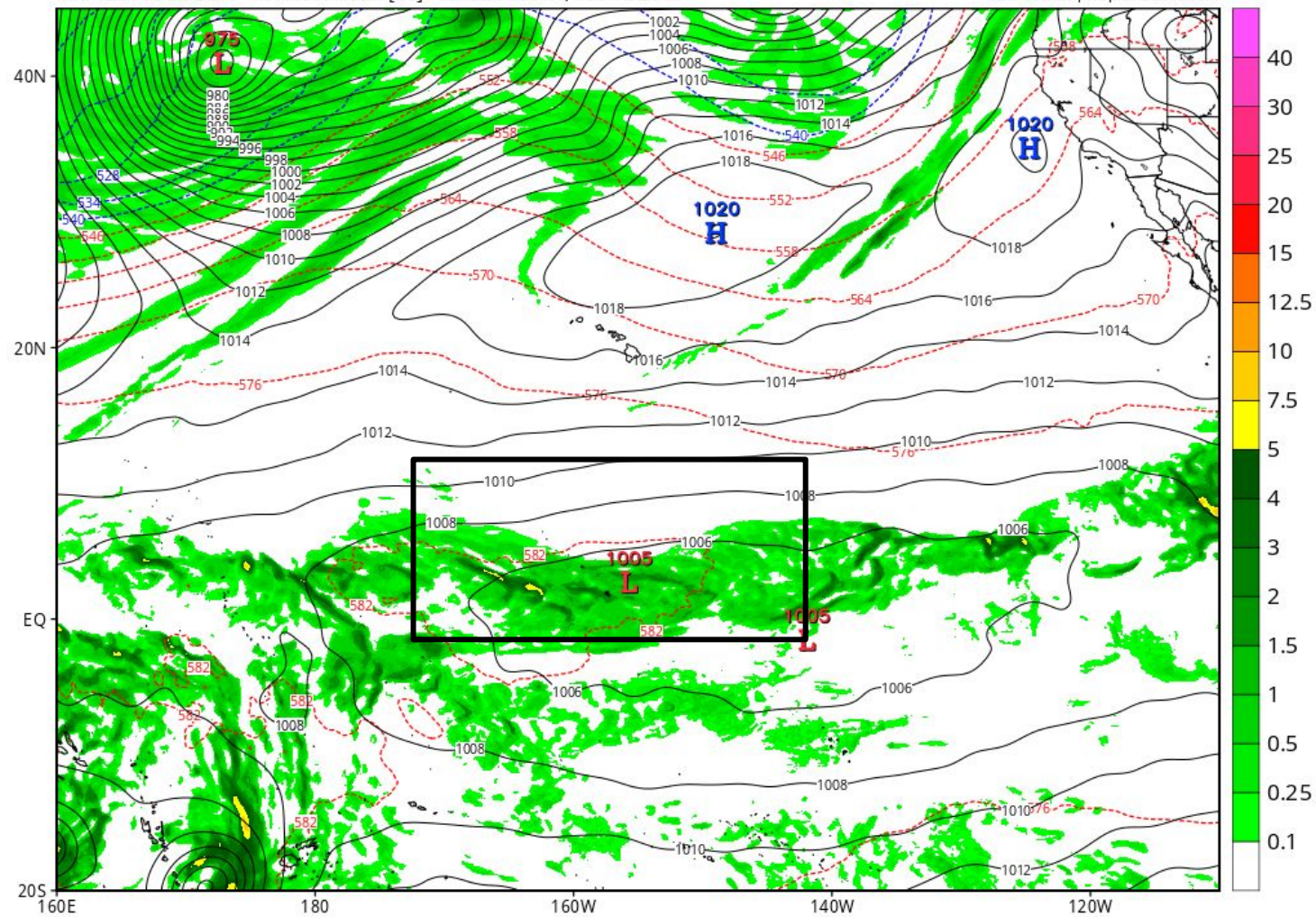
Levi Cowan | tropicaltidbits.com



GFS 6-hour Averaged Precip Rate (mm/hr), MSLP (hPa) & 1000-500mb Thickness (dam)

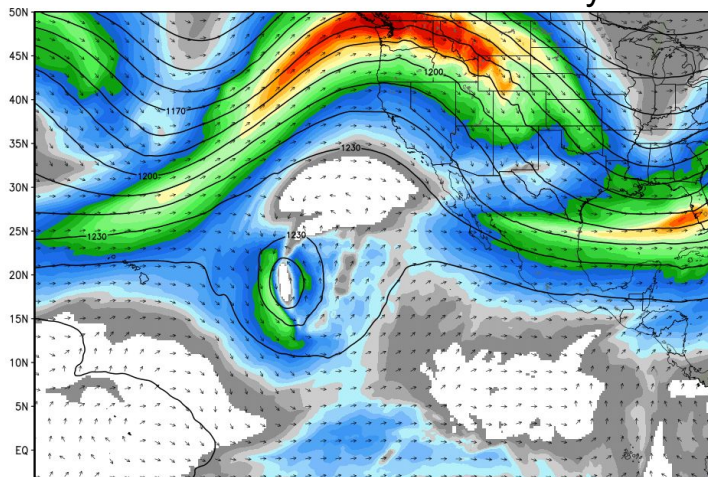
Init: 12z Feb 09 2016 Forecast Hour: [60] valid at 00z Fri, Feb 12 2016

Levi Cowan | tropicaltidbits.com



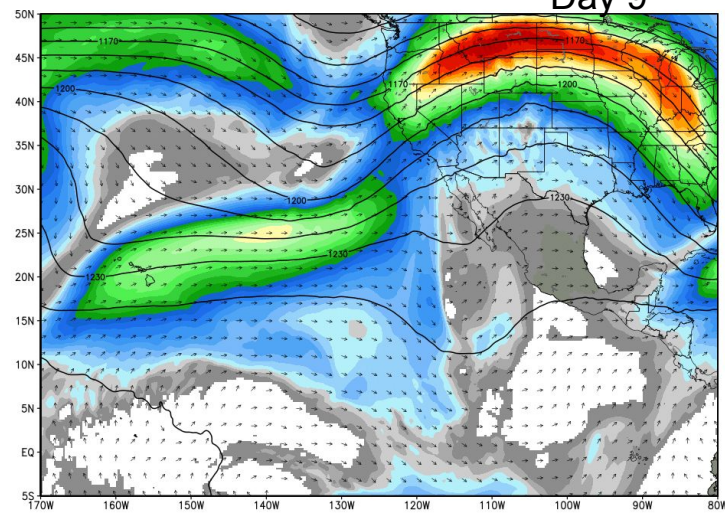
ECMWF 200 hPa Wind Speed & Vector Direction [knots], Height [dm]
INIT: 00Z09FEB2016 fx: [168] hr --> Tue 00Z16FEB2016

Day 7



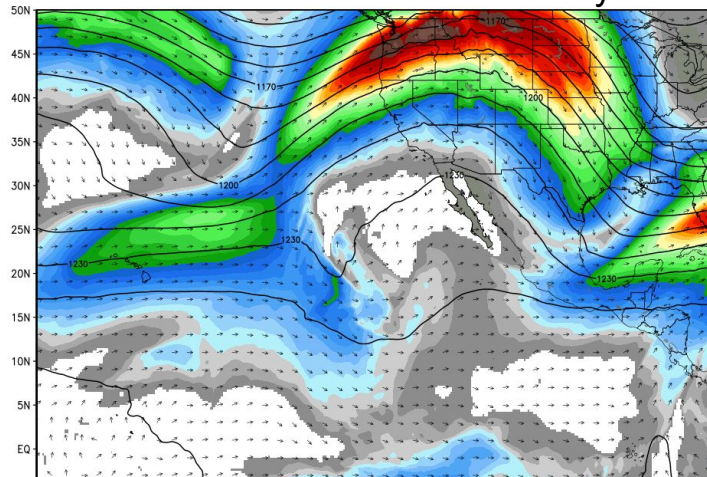
ECMWF 200 hPa Wind Speed & Vector Direction [knots], Height [dm]
INIT: 00Z09FEB2016 fx: [216] hr --> Thu 00Z18FEB2016

Day 9



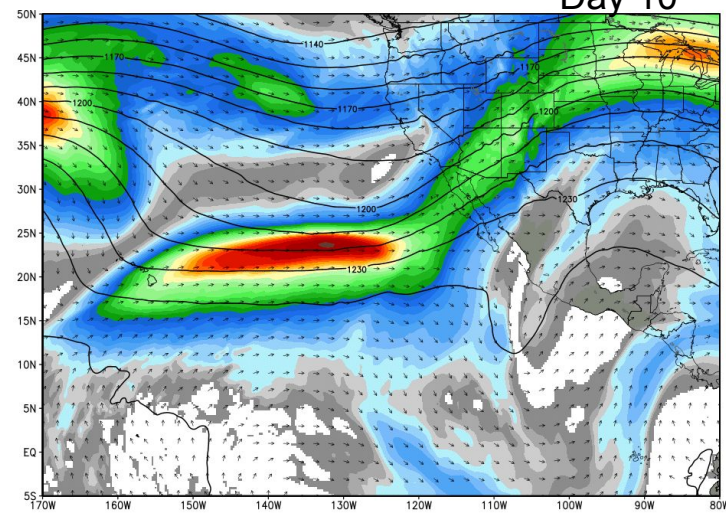
ECMWF 200 hPa Wind Speed & Vector Direction [knots], Height [dm]
INIT: 00Z09FEB2016 fx: [192] hr --> Wed 00Z17FEB2016

Day 8



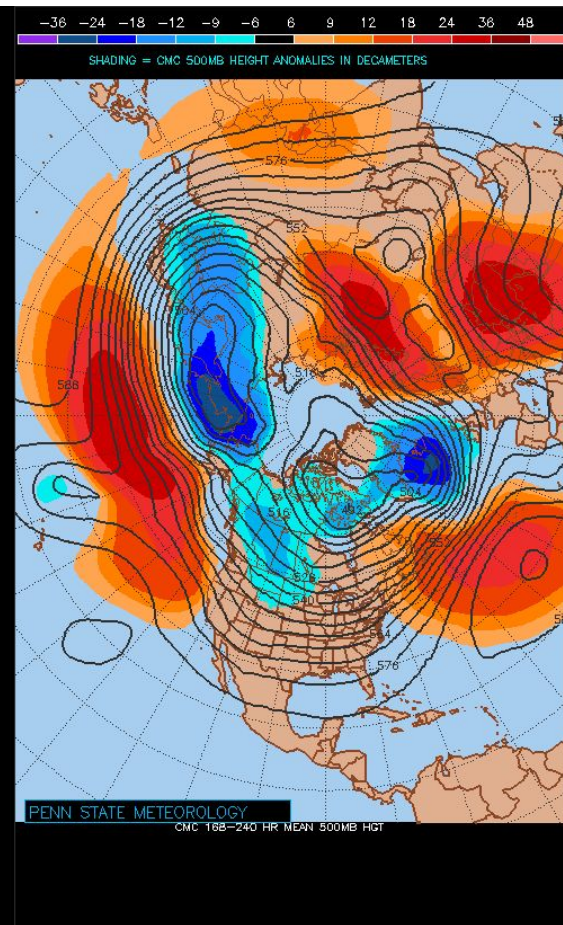
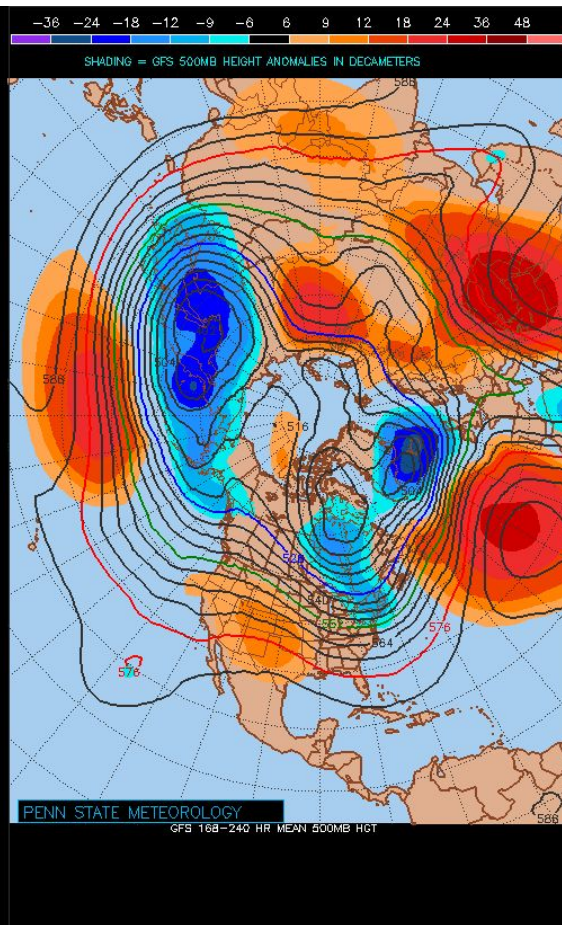
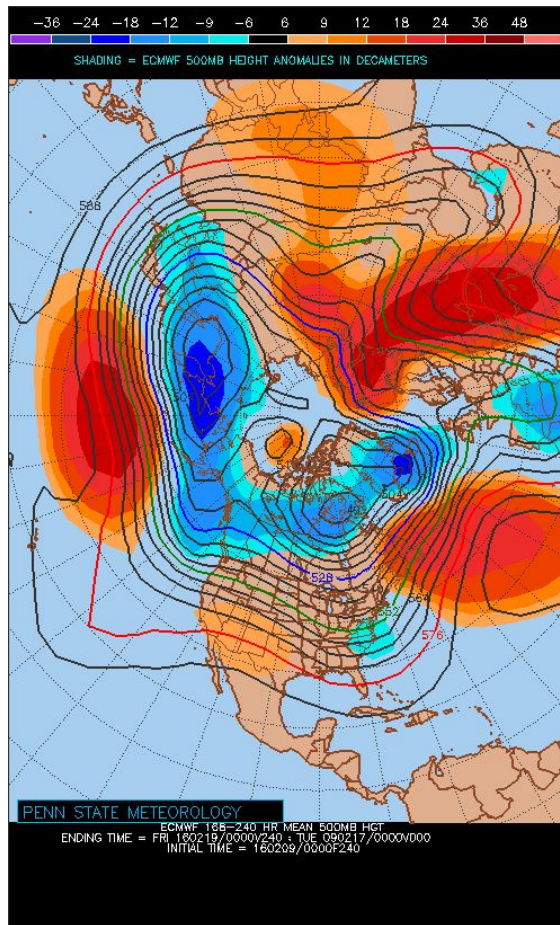
ECMWF 200 hPa Wind Speed & Vector Direction [knots], Height [dm]
INIT: 00Z09FEB2016 fx: [240] hr --> Fri 00Z19FEB2016

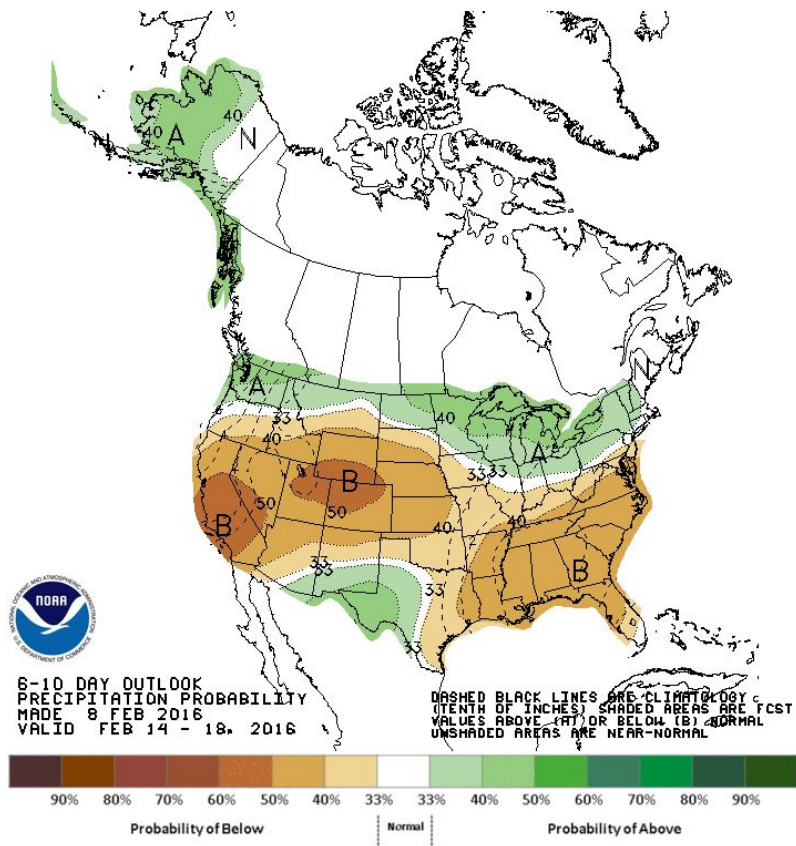
Day 10



Medium - Long Range Forecast

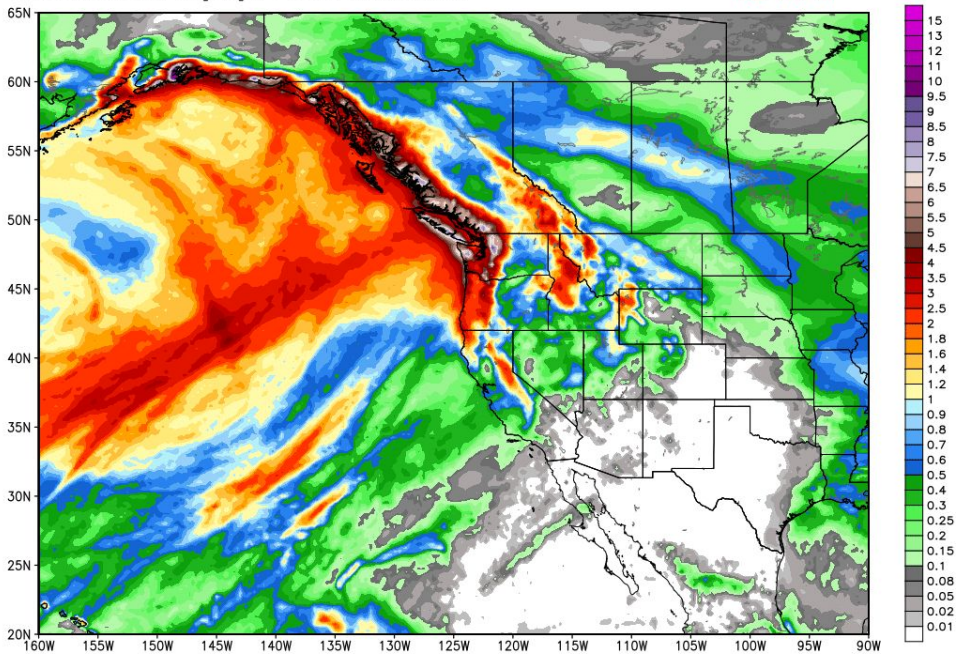
Day 7-10 Initialized 00Z TUE 9 Feb



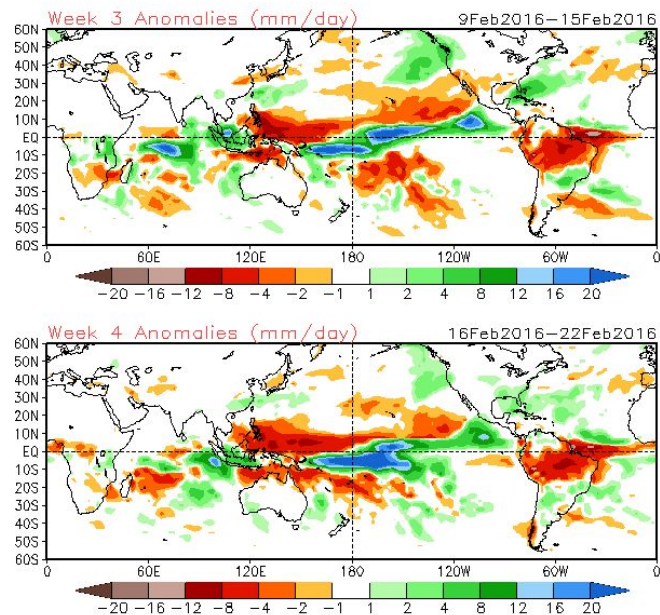


ECMWF Total Precipitation [inches] between 00Z09FEB2016 -- 00Z19FEB2016
INIT: 00Z09FEB2016 fx: [240] hr --> Fri 00Z19FEB2016

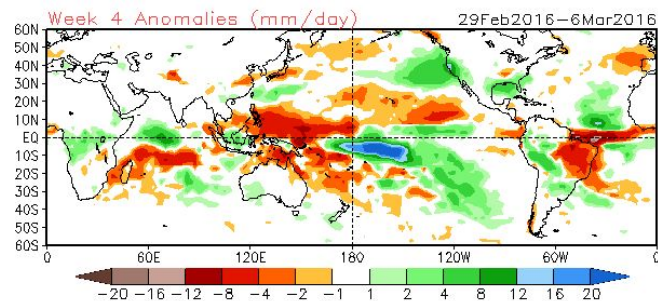
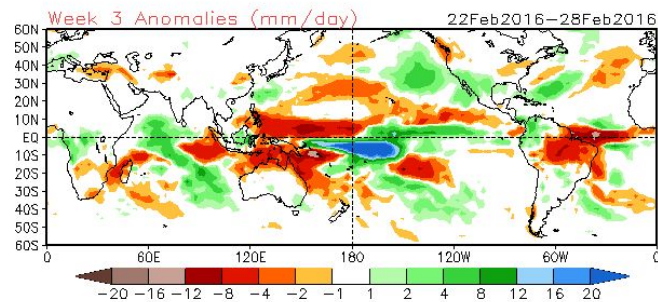
Max 11.7 in



CFSv2 Weeks 3 & 4 Precipitation
16 Member Ensemble Mean Forecast from 25Jan2016



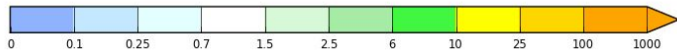
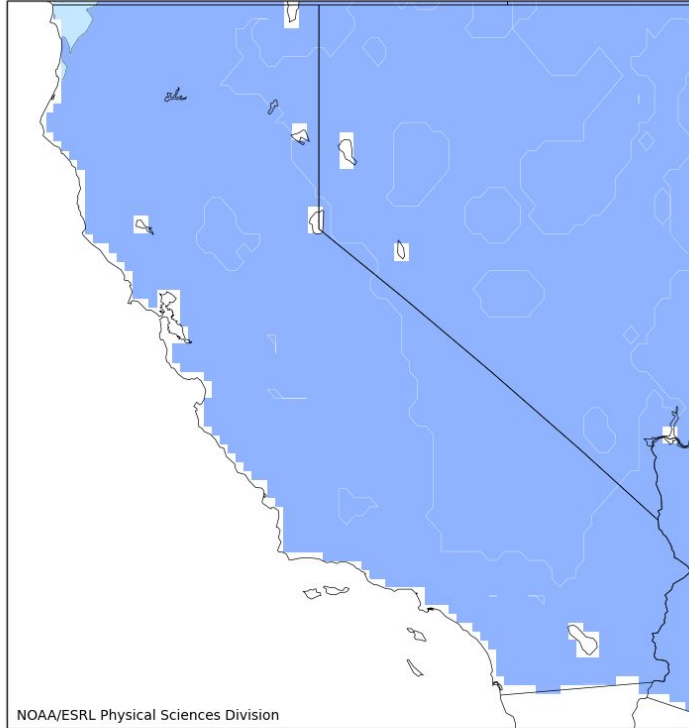
CFSv2 Weeks 3 & 4 Precipitation
16 Member Ensemble Mean Forecast from 07Feb2016



Medium - Long Range Forecast

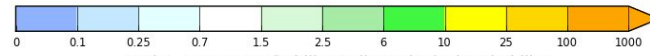
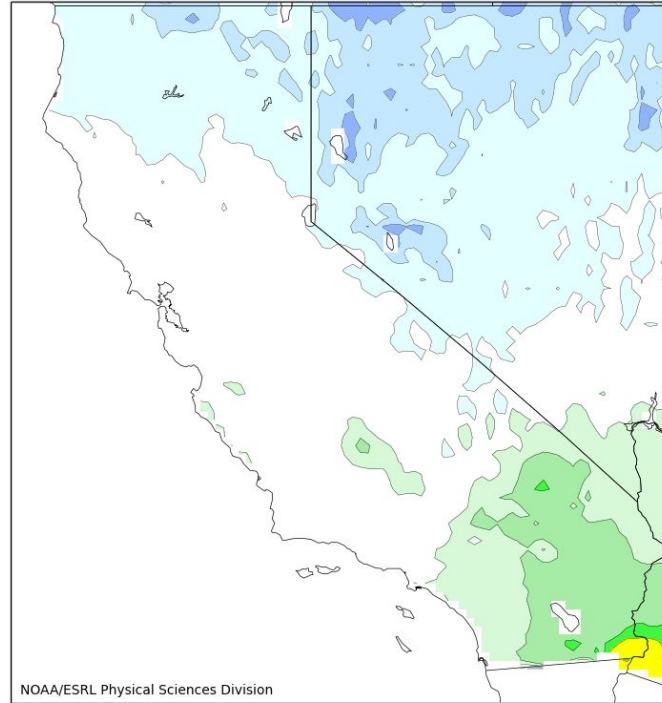
ESRL-Calibrated Reforecast Pcpn : Day 0-7 and 8-15 Day Fcst *(from the 00Z MON 8 FEB ensembles of the experimental reforecast system)*

000-168hr fcst from 00Z Mon Feb 08. Valid 00Z Mon Feb 08 - 00Z Mon Feb 15
Ratio. Forecast/Climo Prob of Precip > 50mm. CSGD.



Ratio: Forecast Probability / Climatological Probability

198-360hr fcst from 00Z Mon Feb 08. Valid 06Z Tue Feb 16 - 00Z Tue Feb 23
Ratio. Forecast/Climo Prob of Precip > 50mm. CSGD.



Ratio: Forecast Probability / Climatological Probability