

**Summary of Key Briefing Points**  
**1030-1130am MST THU February 11, 2016**

# Current Conditions as of THU 12Z-15Z February 11

## Tropics and Mid-latitudes

### *Over the Tropical Pacific:*

- Convection: Isolated along an air-mass boundary, transecting 160, 10N to 150, 2N
- Westward development of convective elements into the moist tropical airmass
- Satellite upper level winds show 20-30kt NW winds across the east portion of FD today, to EQ
- Upper level anticyclonic circulation centered 5N, 160W
- Thermodynamic stability low in the anticyclonic shear region of southwest half of FD (CIX Cape >3000J)

# Tropical Outlook

- GFS EC and Navy models indicate convection to be isolated in the SW corner of FD Friday, weaker yet Saturday.
- Convection in the FD gradually increase in coverage, and shifts northward to near 5N during Sunday-Tues period
- Subtropical convection associated with cutoff low to develop Sat 15N, 130W

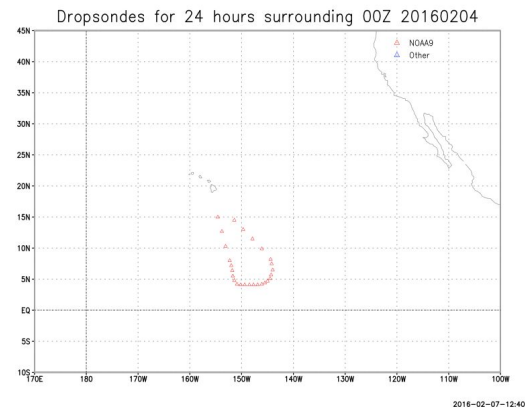
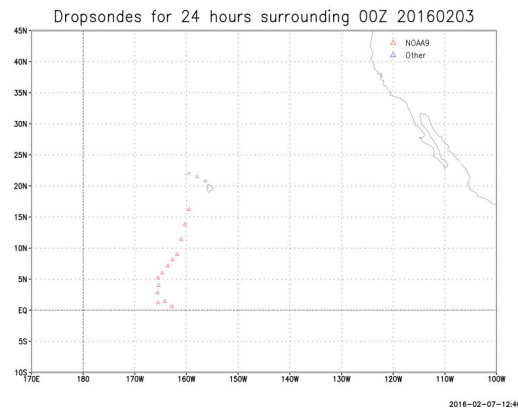
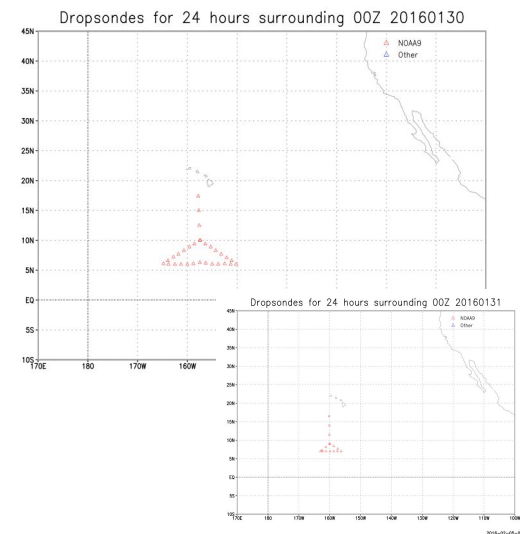
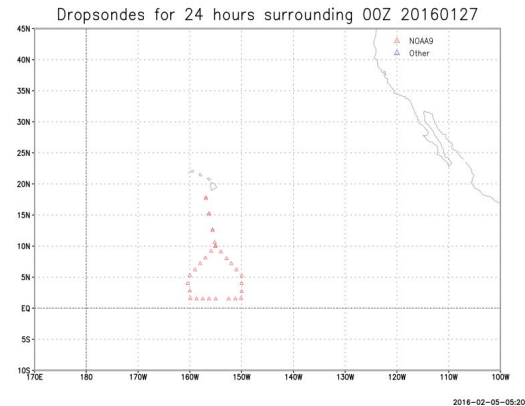
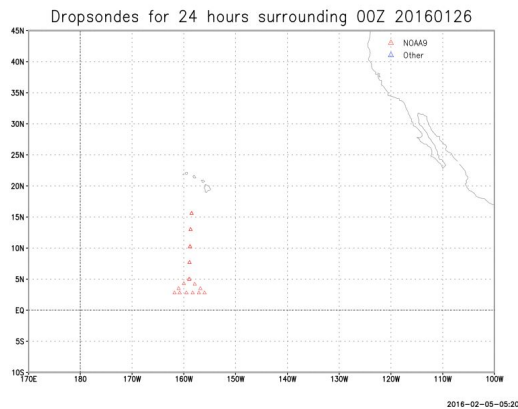
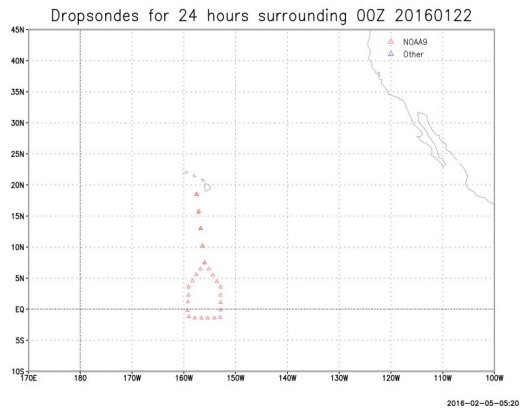
# Midlatitude Conditions/Outlook

## Short Term:

- CA to be mostly dry through Tuesday 16 Feb

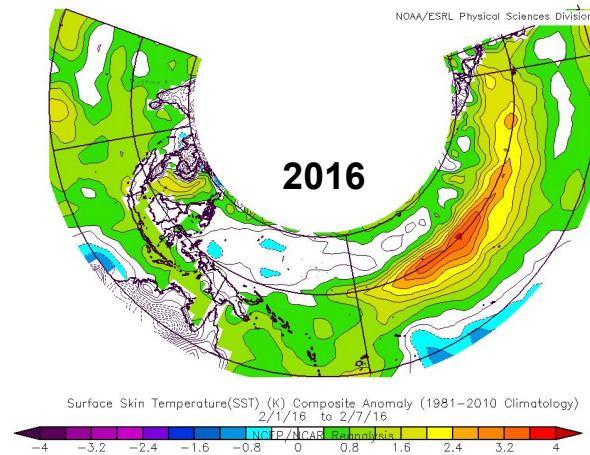
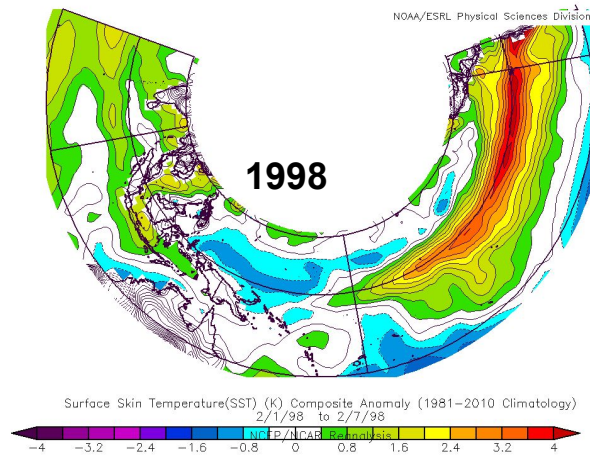
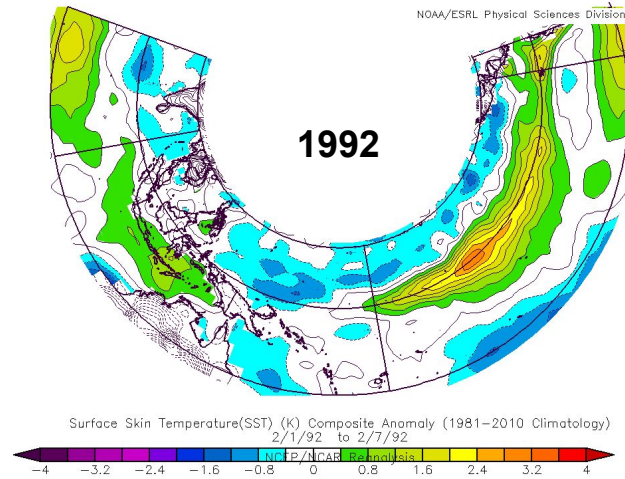
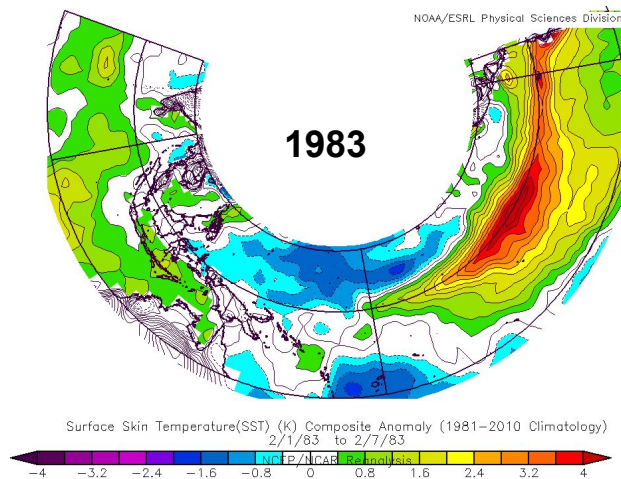
## Medium - Long Term:

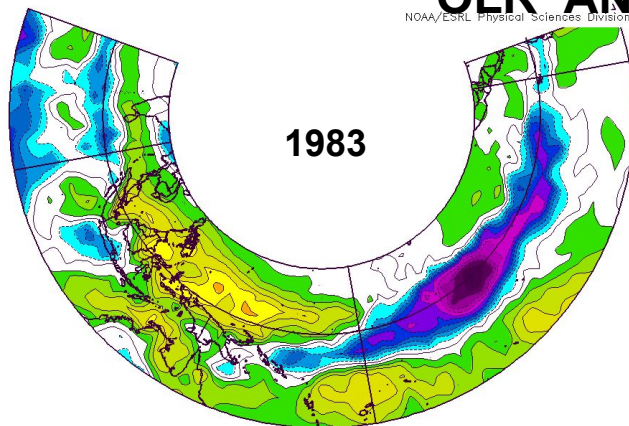
- Day 0-6 accumulated pcpn for CA shows little pcpn
- EC/GFS return rainfall for Week-2, as troughing develops just west of CA.



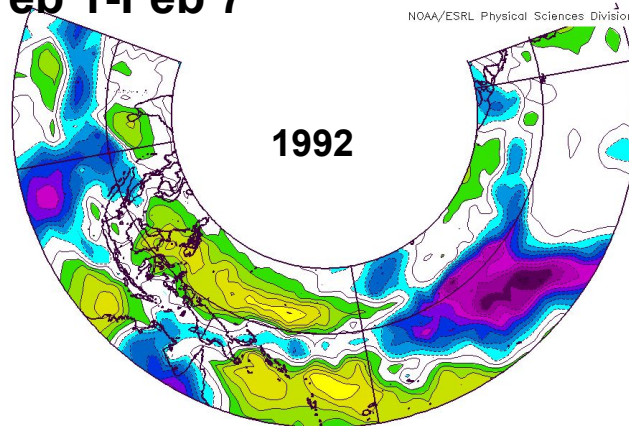
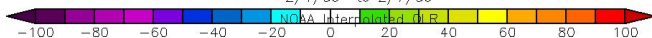
**G-IV Missions: Dropsonde Input to NOAA Global Analysis**

# SST ANOM Feb 1-Feb 7

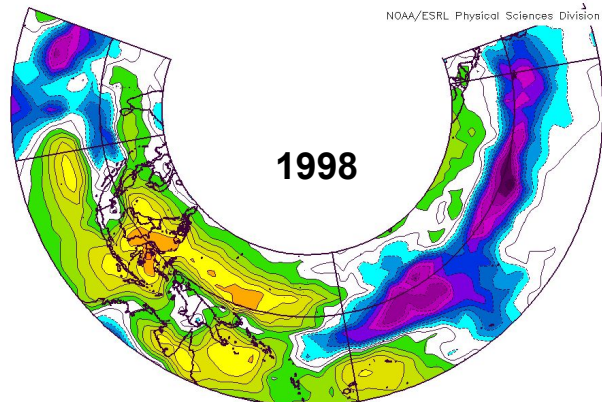
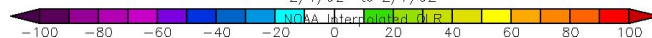




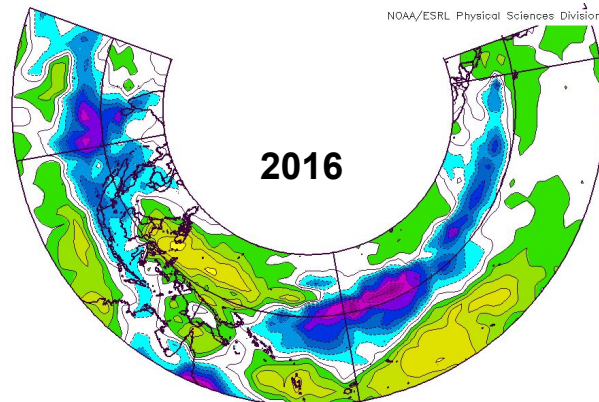
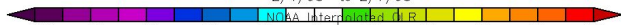
Surface OLR ( $\text{W/m}^2$ ) Composite Anomaly (1981–2010 Climatology)  
2/1/83 to 2/7/83



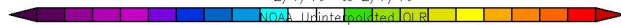
Surface OLR ( $\text{W/m}^2$ ) Composite Anomaly (1981–2010 Climatology)  
2/1/92 to 2/7/92



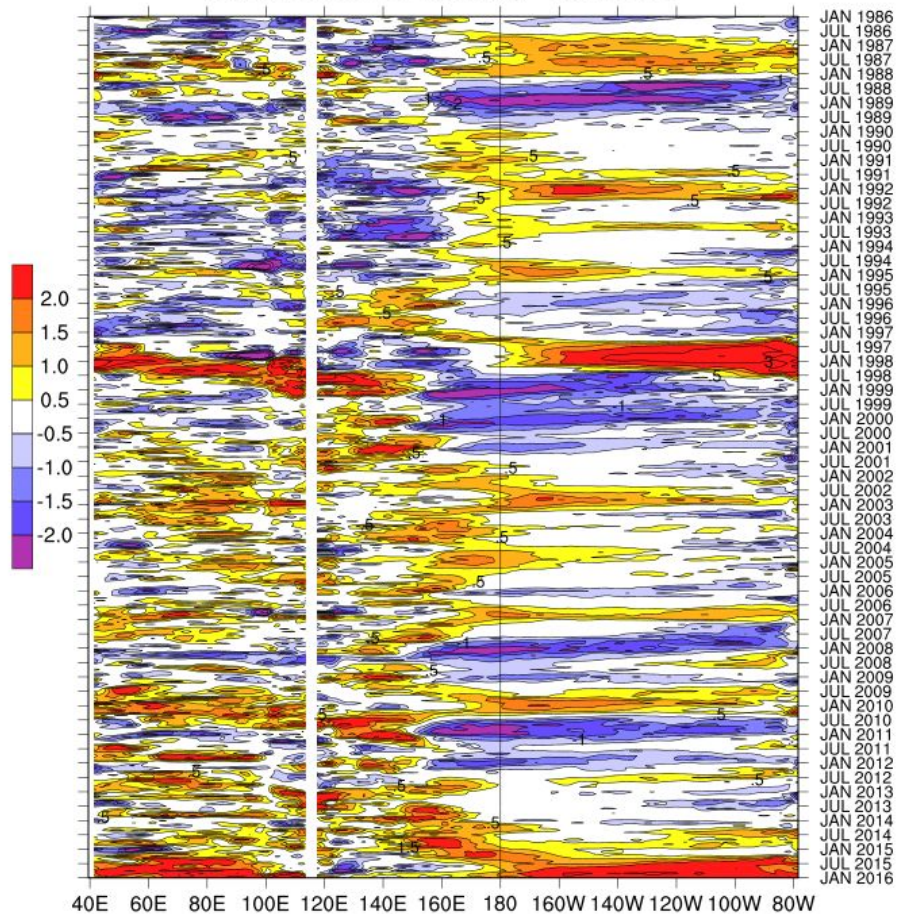
Surface OLR ( $\text{W/m}^2$ ) Composite Anomaly (1981–2010 Climatology)  
2/1/98 to 2/7/98



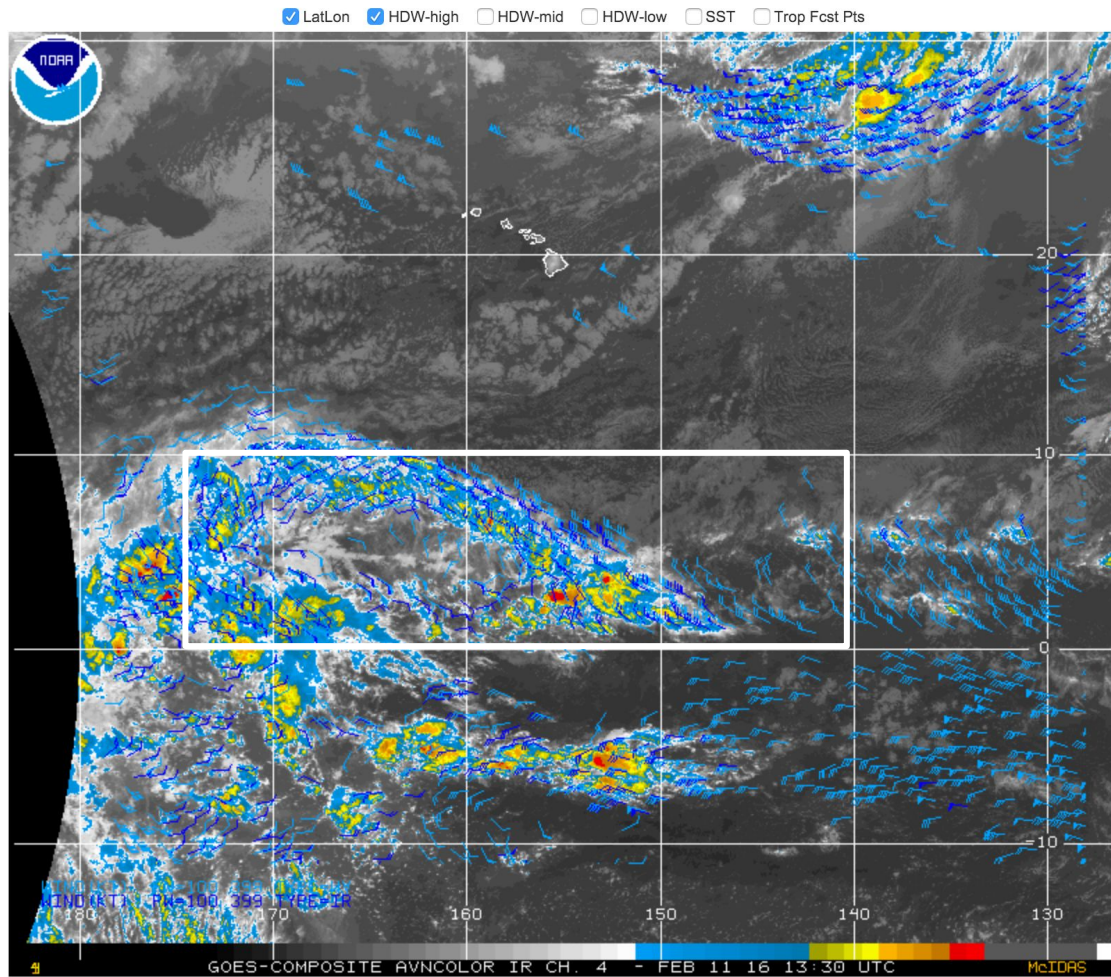
Surface OLR ( $\text{W/m}^2$ ) Composite Anomaly (1981–2010 Climatology)  
2/1/16 to 2/7/16



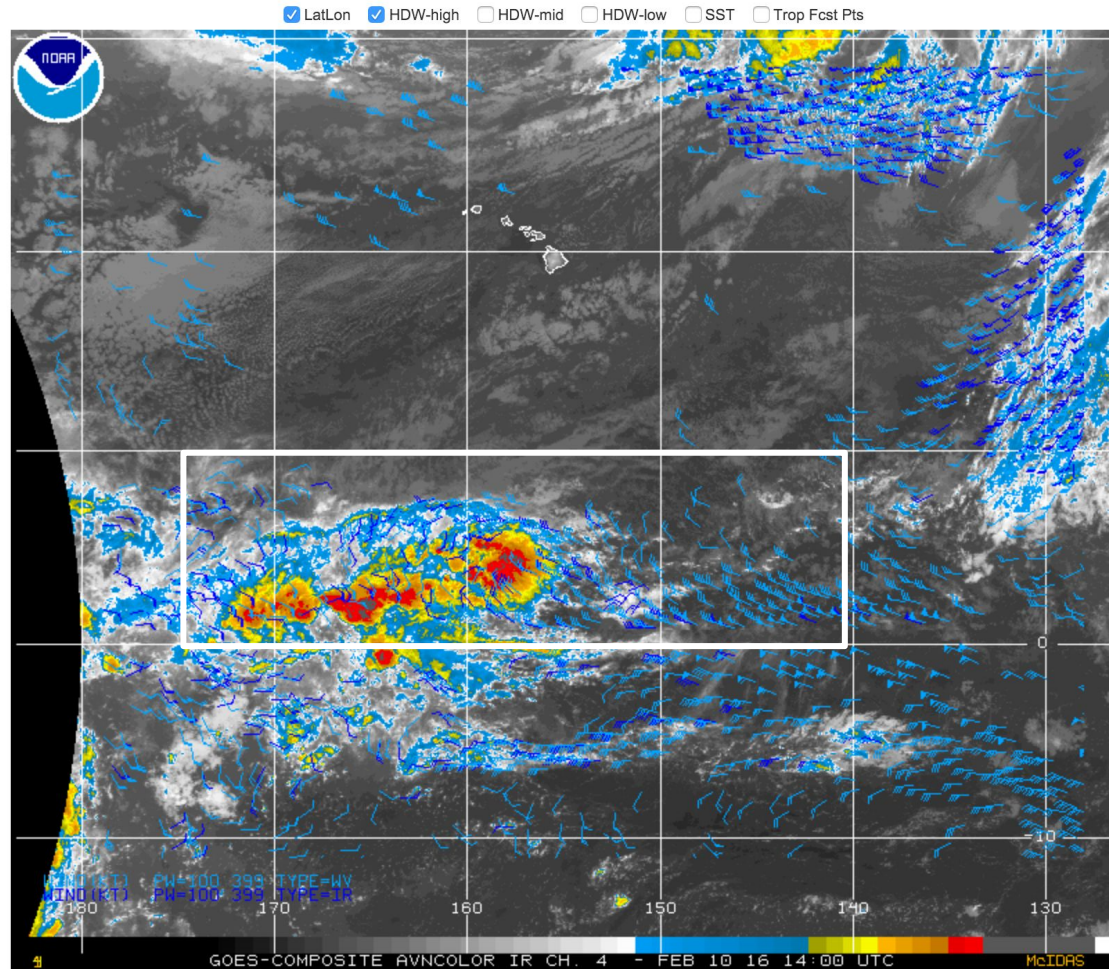
# Normalized SST Anomaly - 3.5N-3.5S



# GOES Composite - El Niño Support – AVN Color Infrared Loop

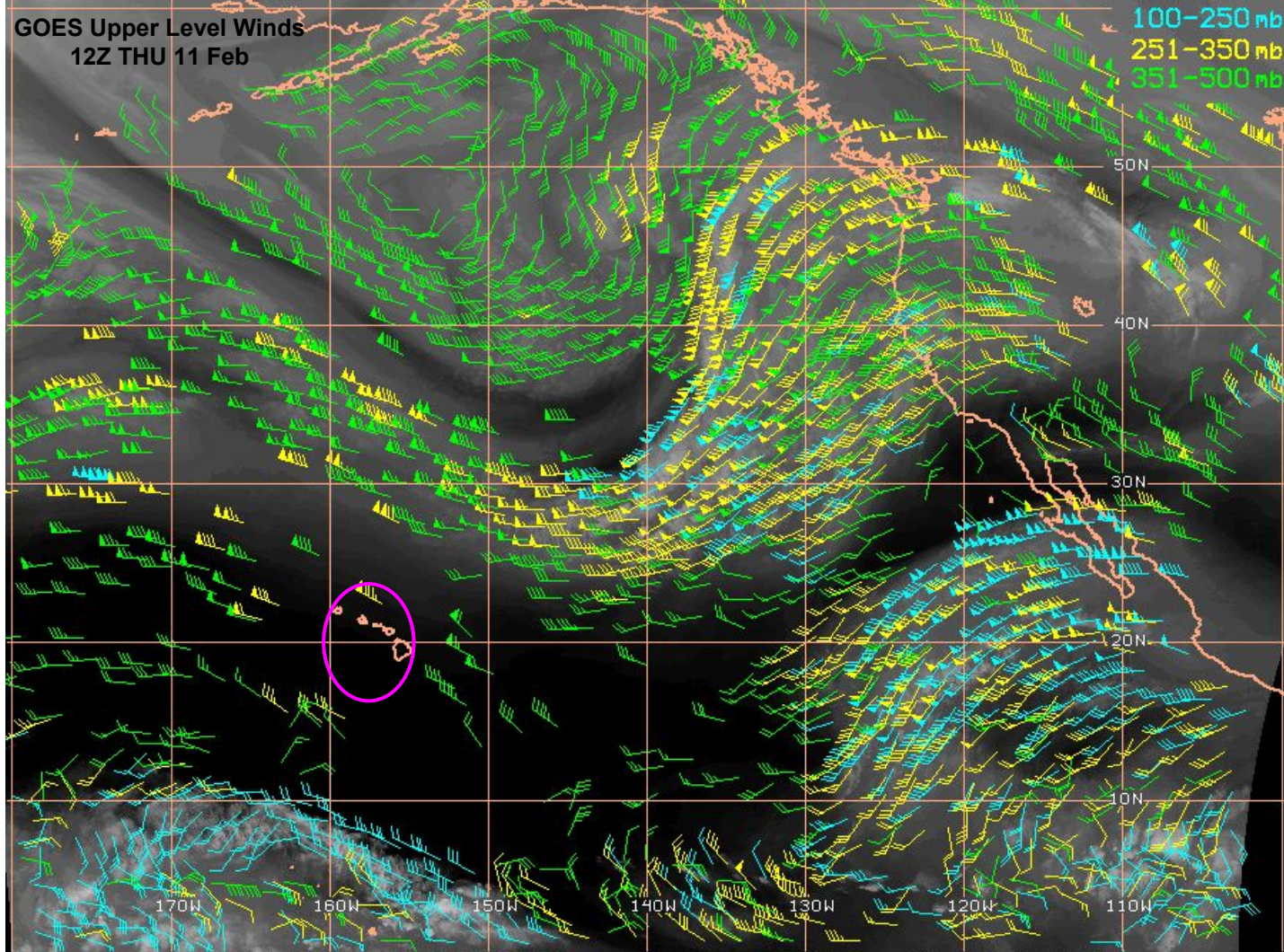


# GOES Composite - El Niño Support – AVN Color Infrared Loop



GOES Upper Level Winds  
12Z THU 11 Feb

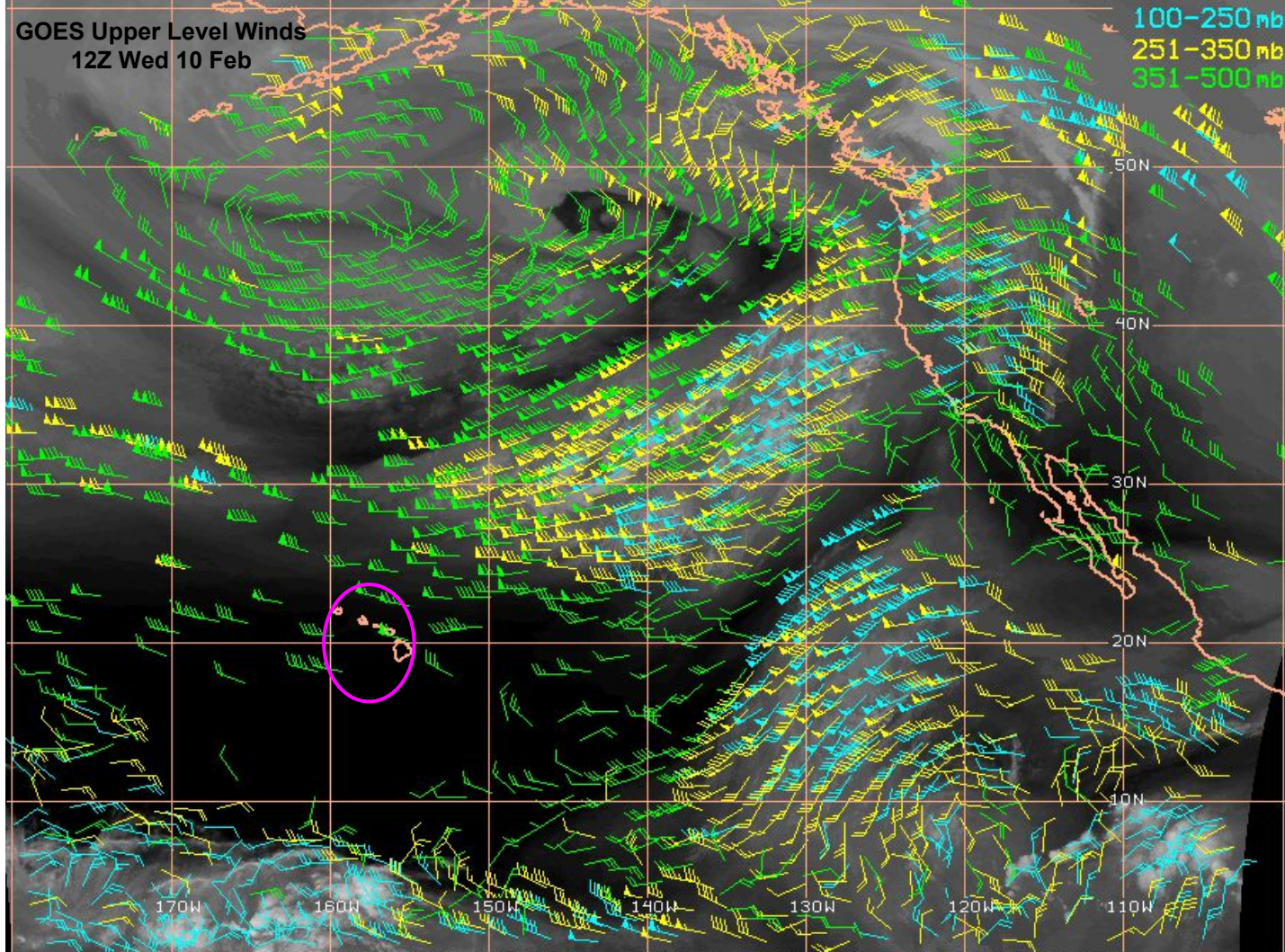
100-250 mb  
251-350 mb  
351-500 mb



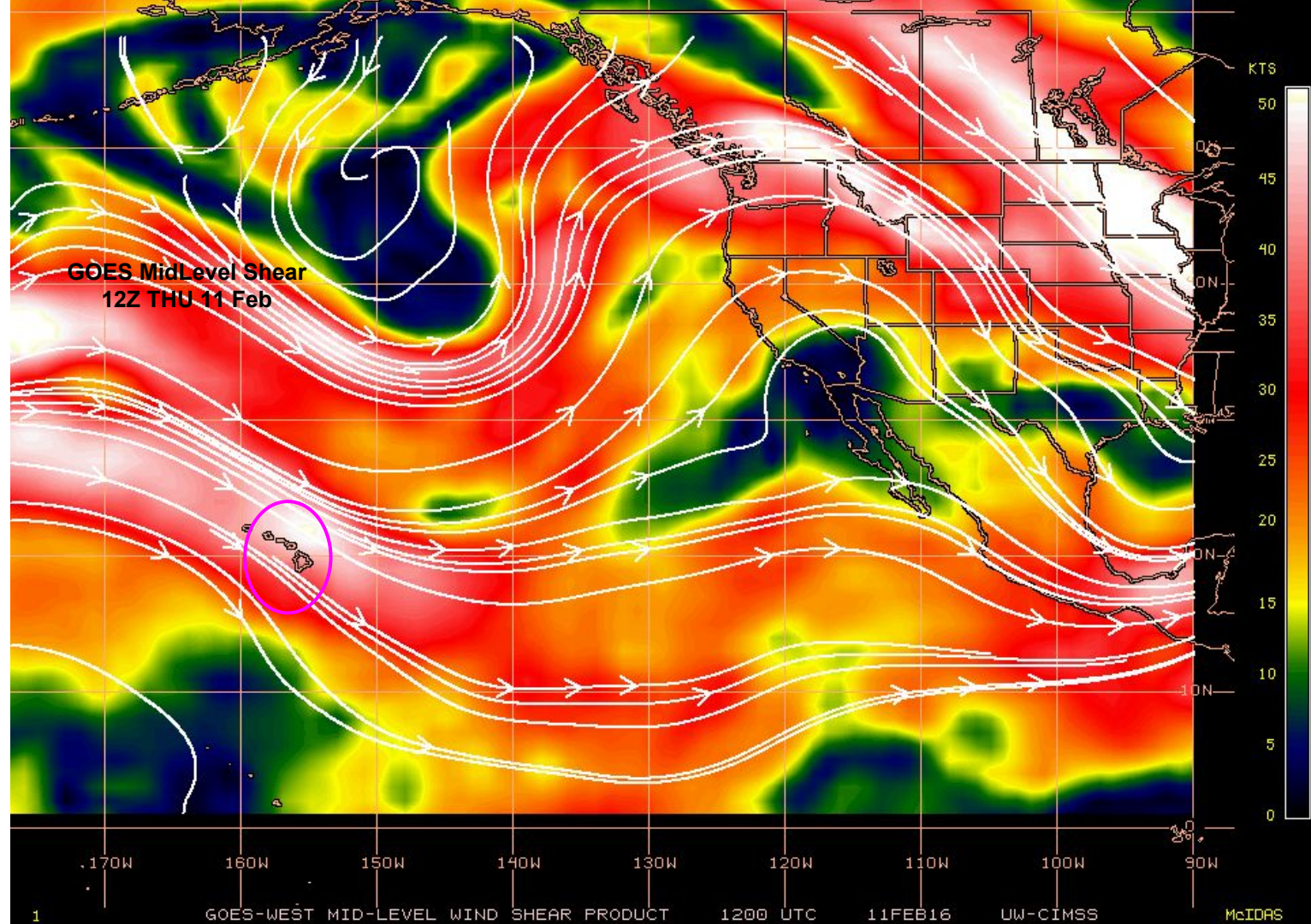
GOES-WEST MID-UPPER LEVEL WINDS 1200 UTC 11FEB16 UW-CIMSS/NESDIS

GOES Upper Level Winds  
12Z Wed 10 Feb

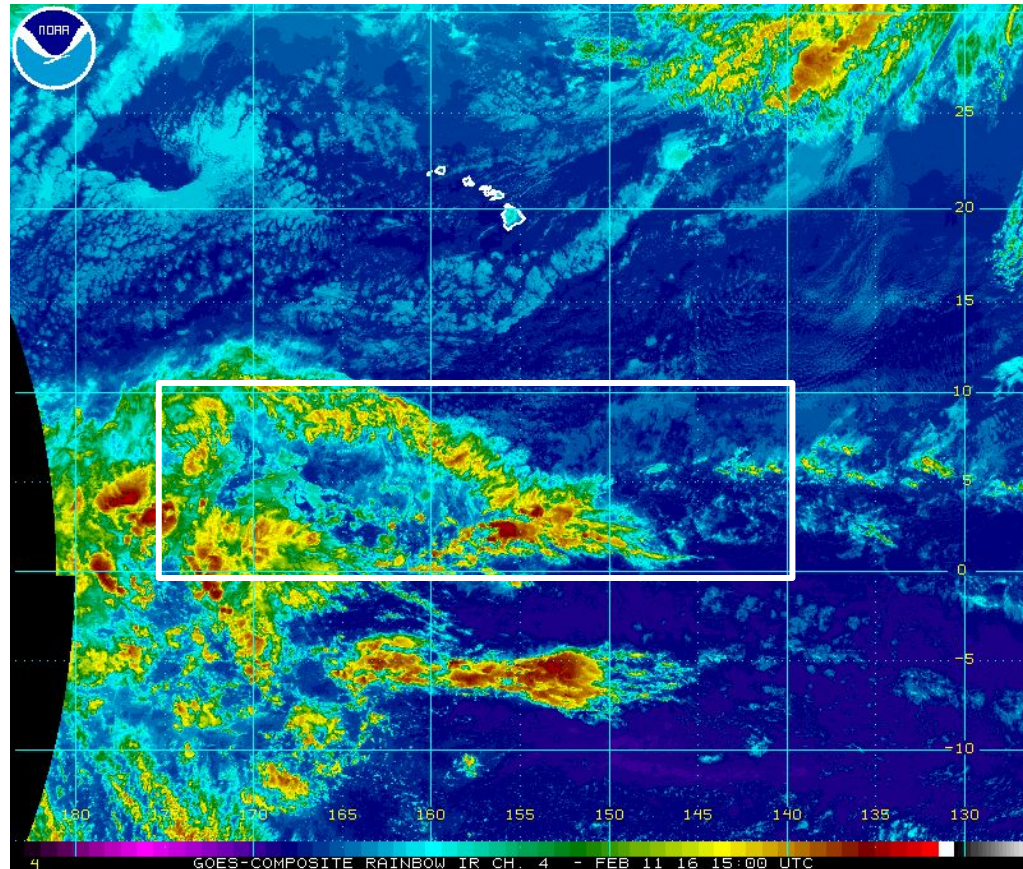
100-250 mb  
251-350 mb  
351-500 mb



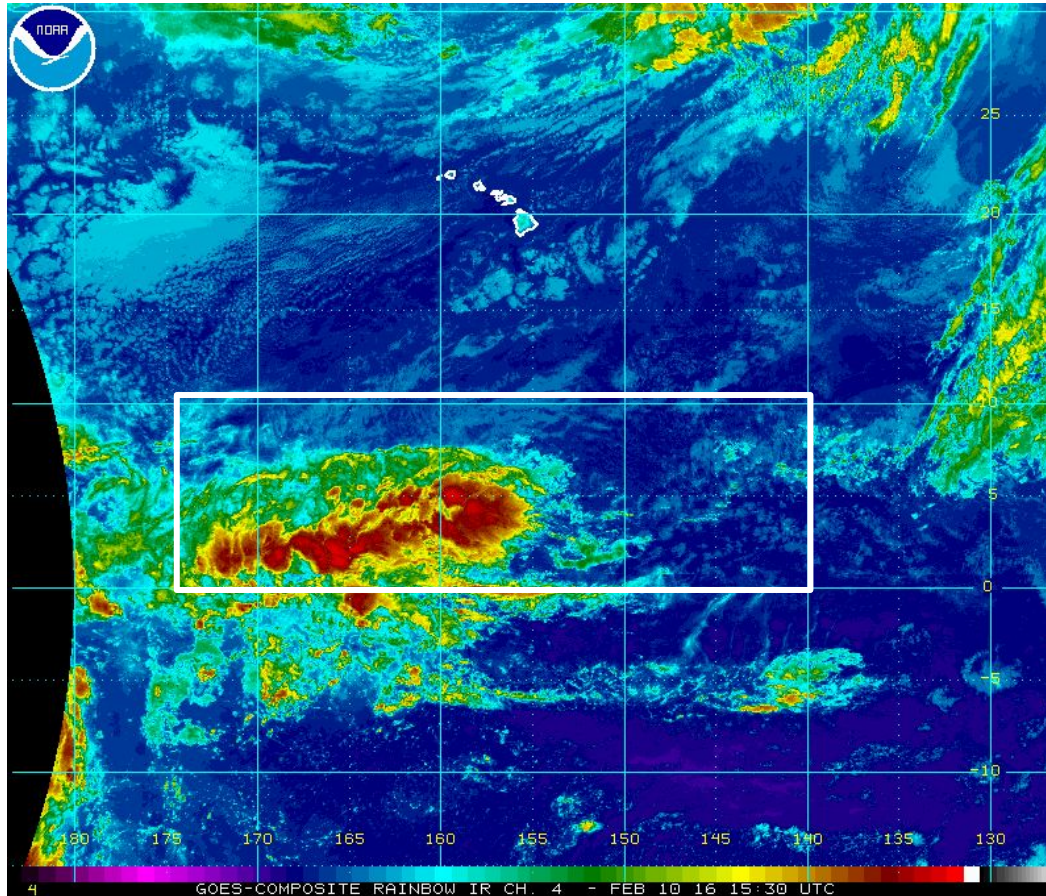
GOES-WEST MID-UPPER LEVEL WINDS 1200 UTC 10FEB16 UW-CIMSS/NESDIS



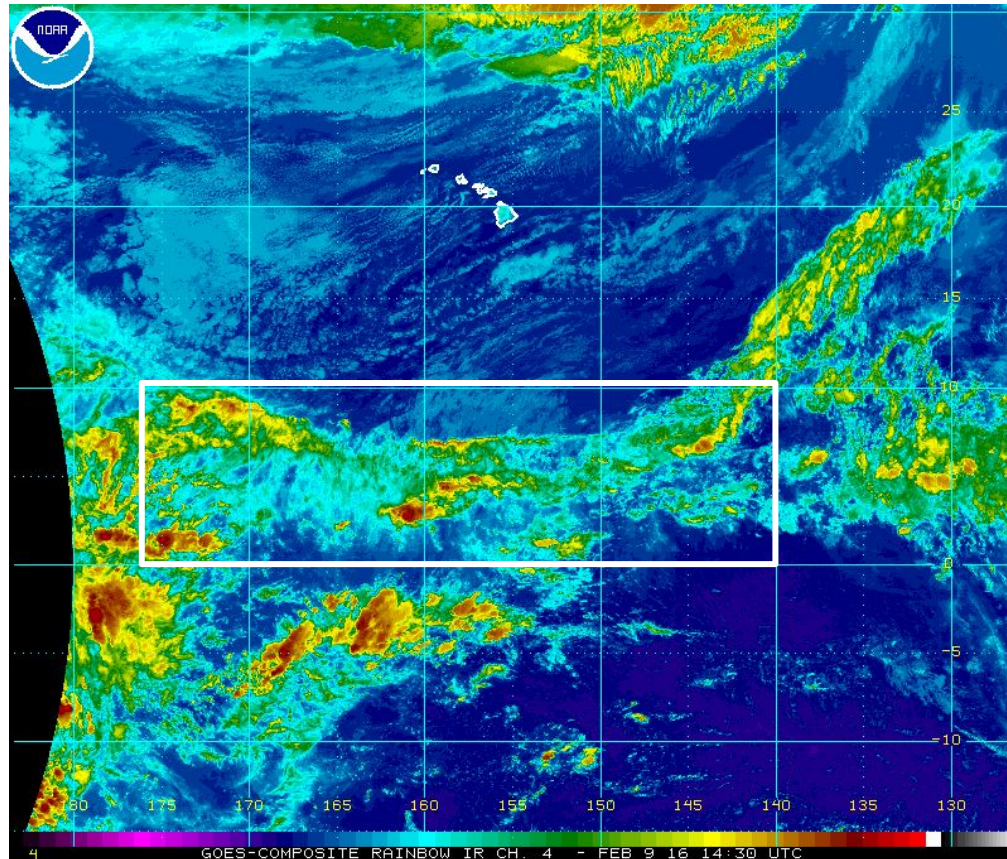
## THU 15Z February 11 Enhanced IR Image



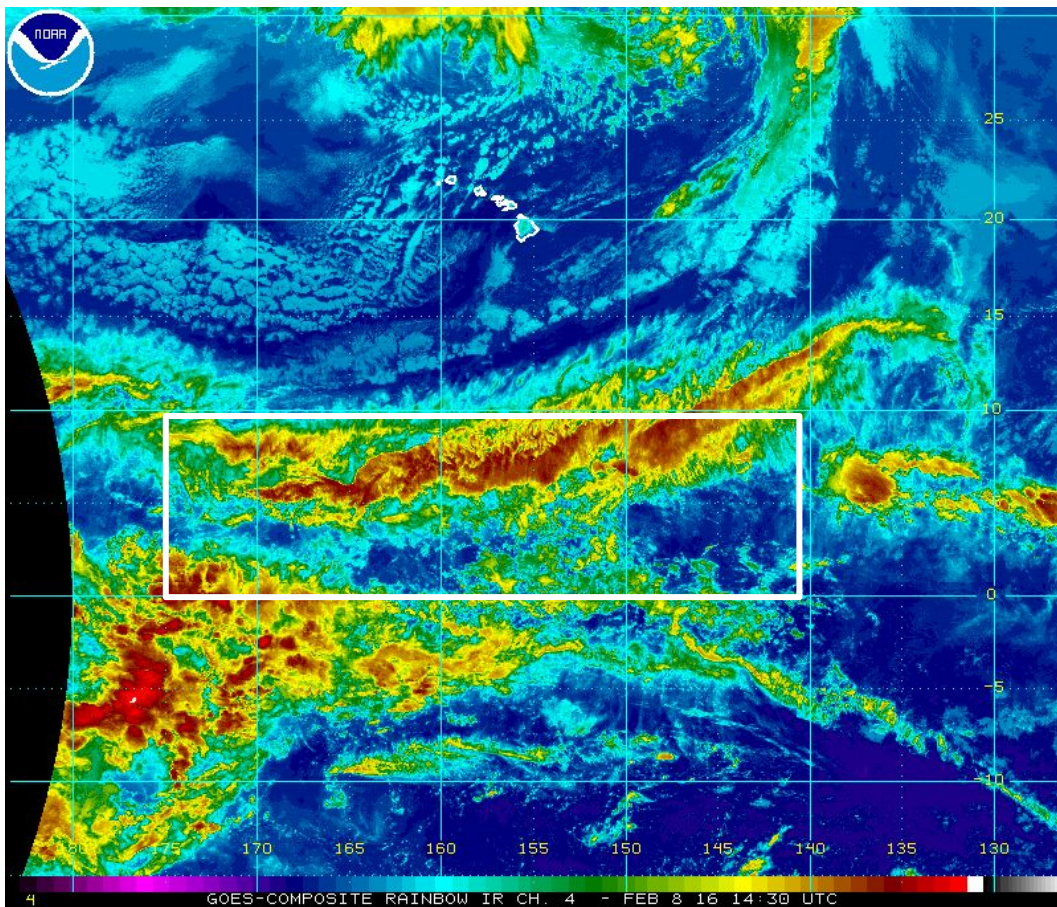
# WED 15:30Z February 10 Enhanced IR Image



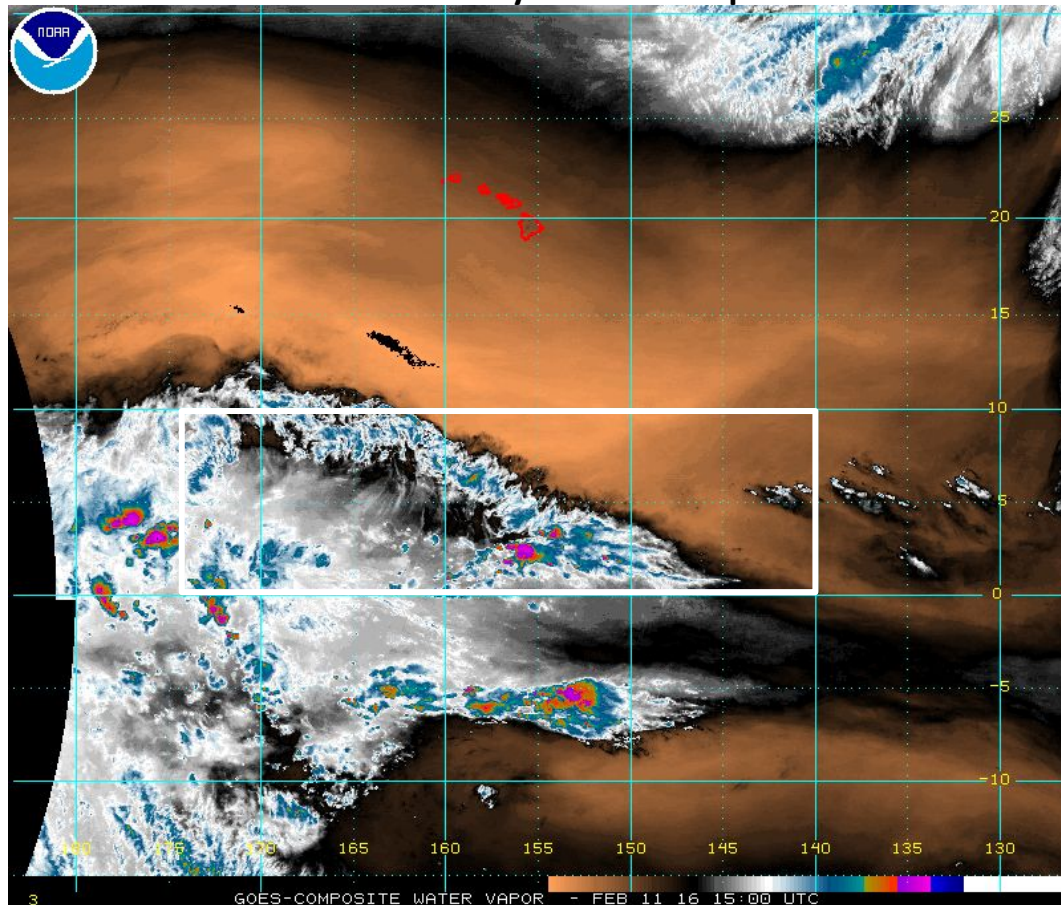
## TUE 14:30Z February 9 Enhanced IR Image

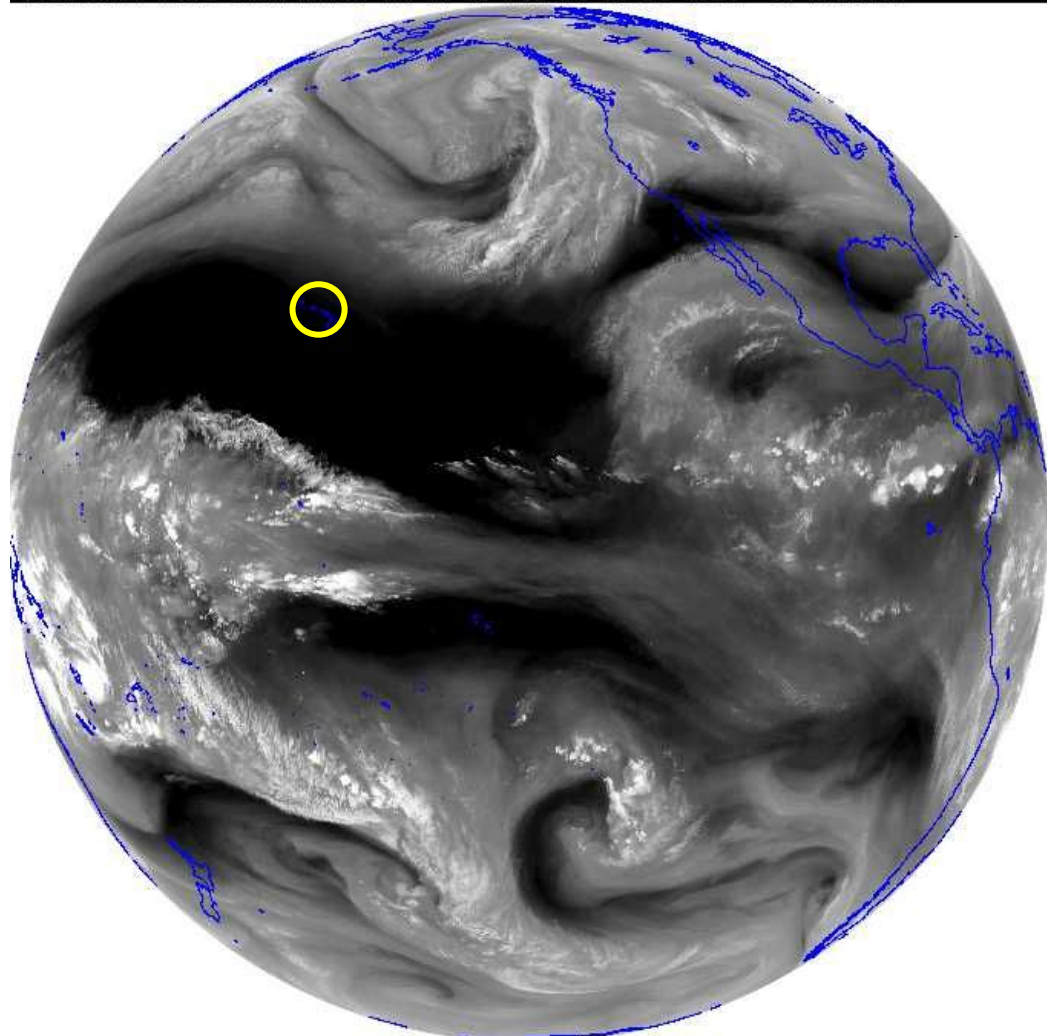


# MON 14:30Z February 8 Enhanced IR Image

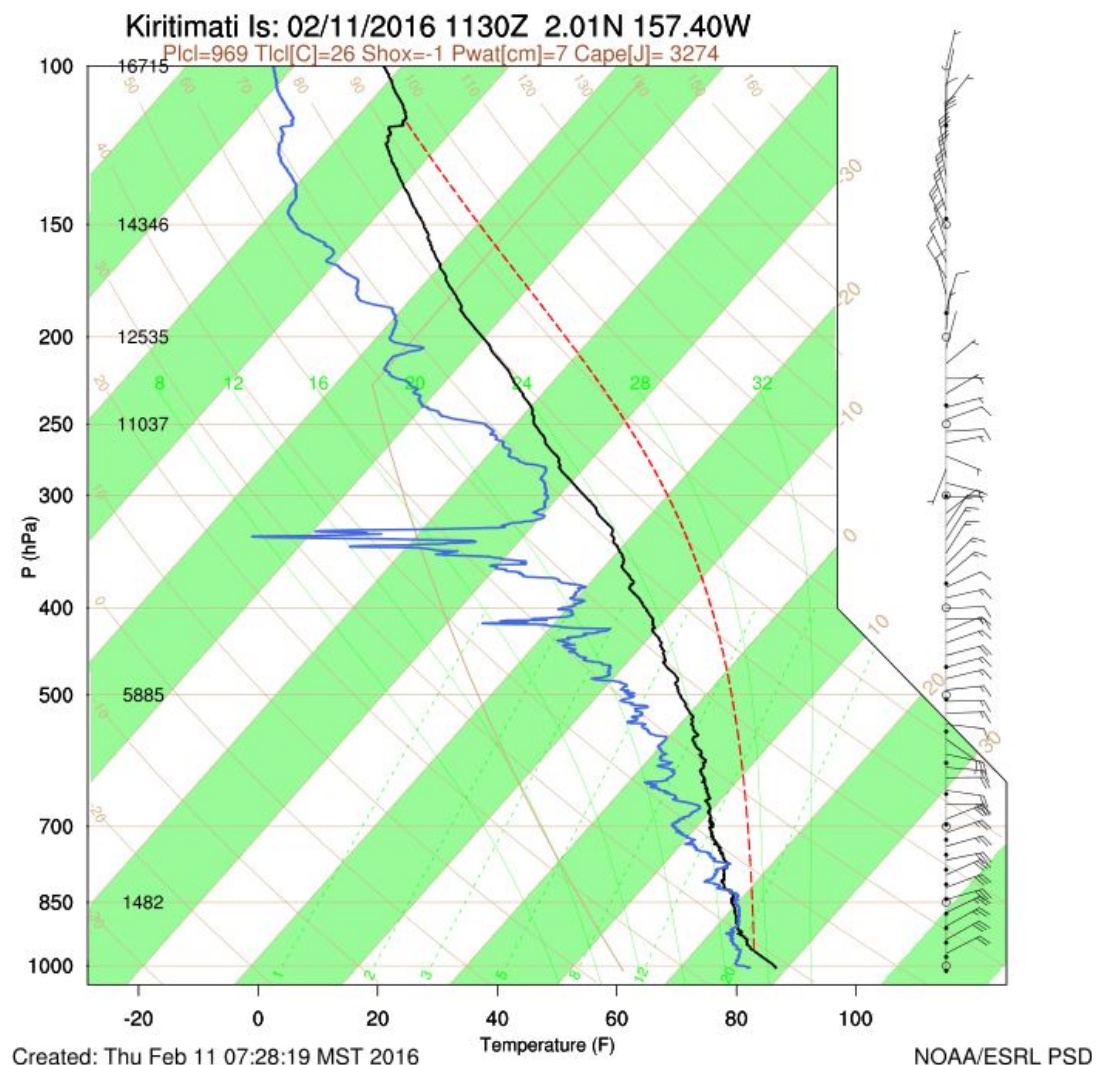


## THU 15Z February 11 Water Vapor

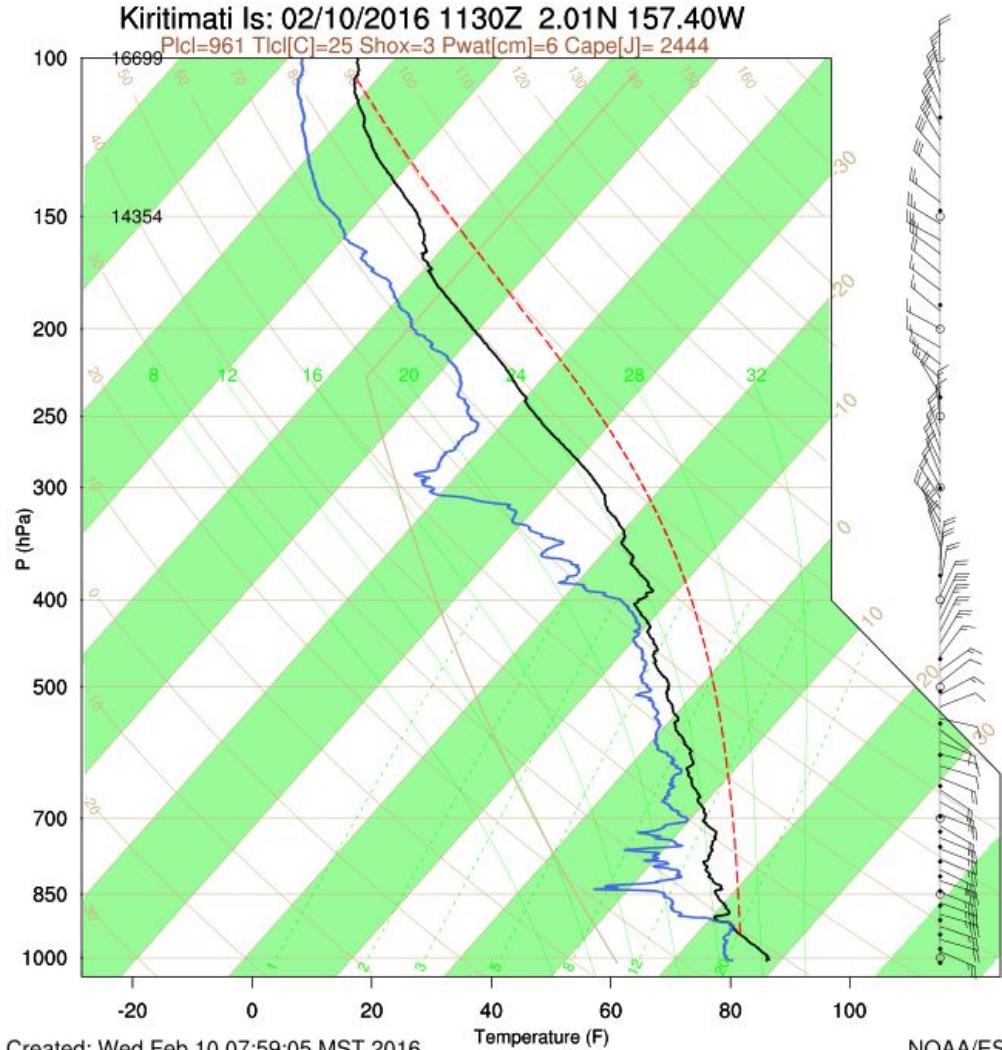




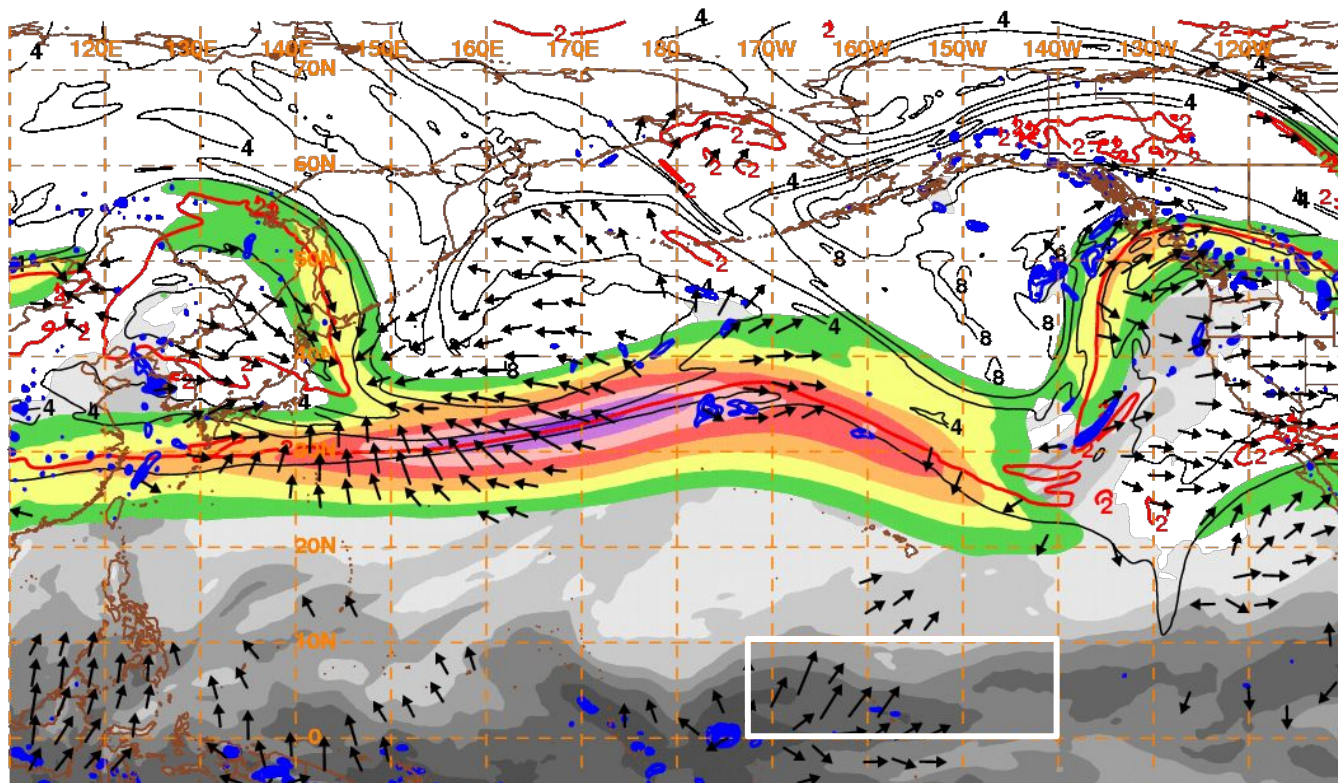
**Kiritimati Sonde: 1130Z**  
**THU Feb 11**



**Kiritimati Sonde: 1130Z**  
**WED Feb 10**



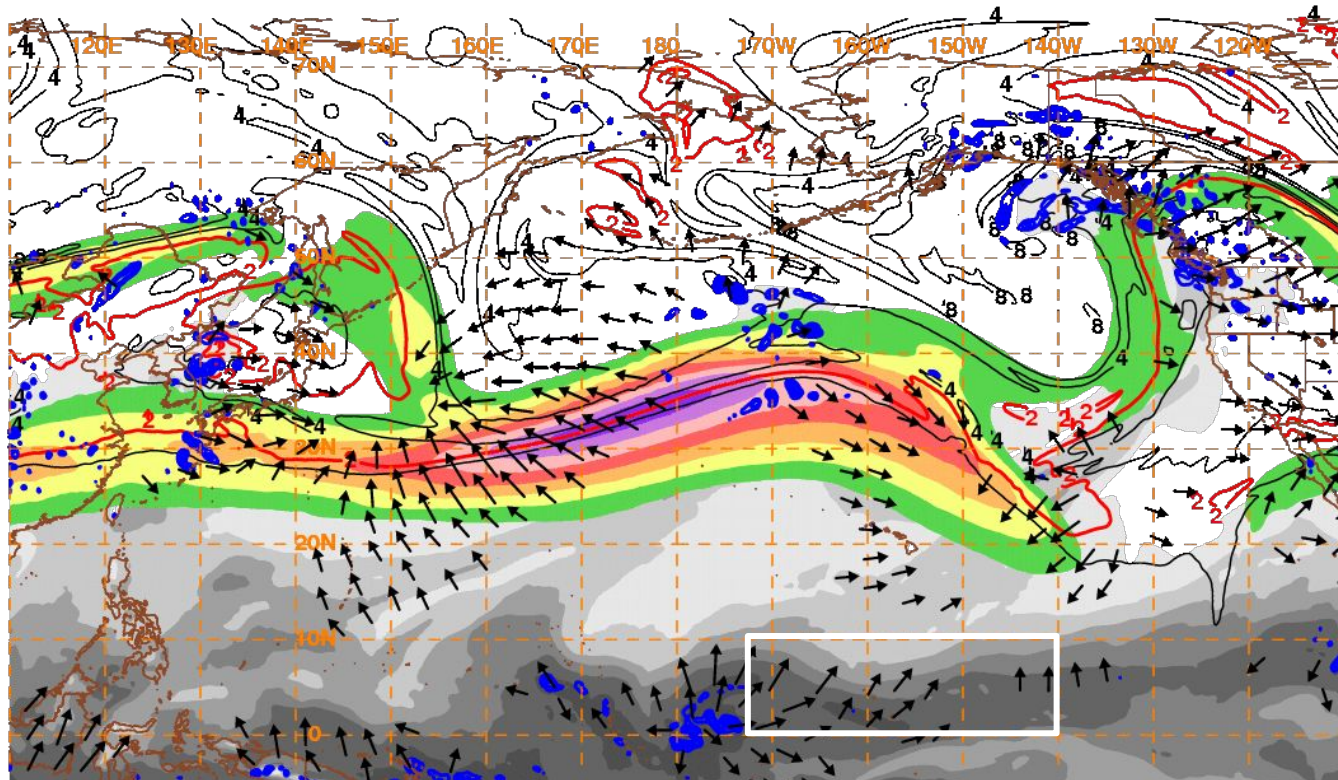
# GFS 6HR FCST Valid 12Z THU Feb 11: 200 mb DIV Wind Vectors



10 m/s → 160211/1200V006 PW, 250 hPa Isotachs, PV, Irr. Wind, 500 hPa Upward Vert. Vel



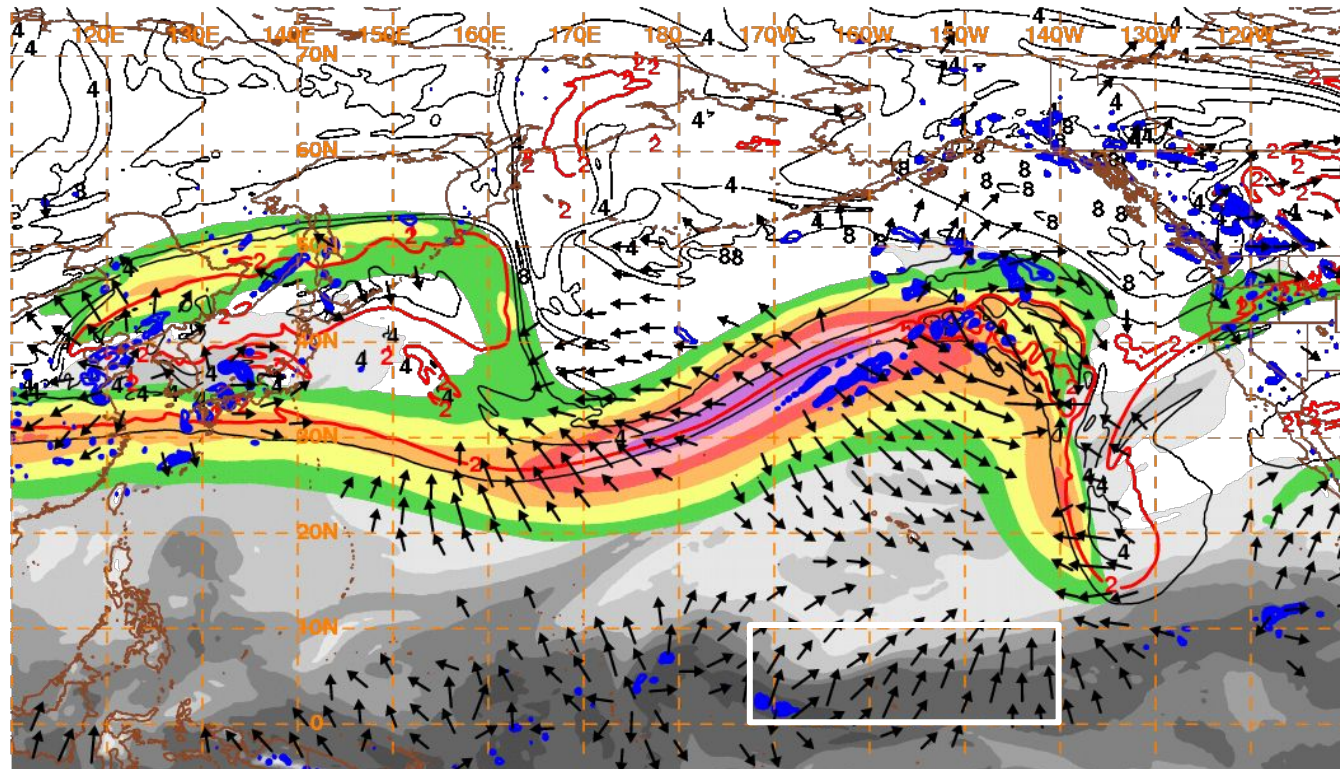
# GFS 18HR FCST Valid 00Z FRI Feb 12: 200 mb DIV Wind Vectors



10 m/s → 160212/0000V018 PW, 250 hPa Isotachs, PV, Irr. Wind, 500 hPa Upward Vert. Vel



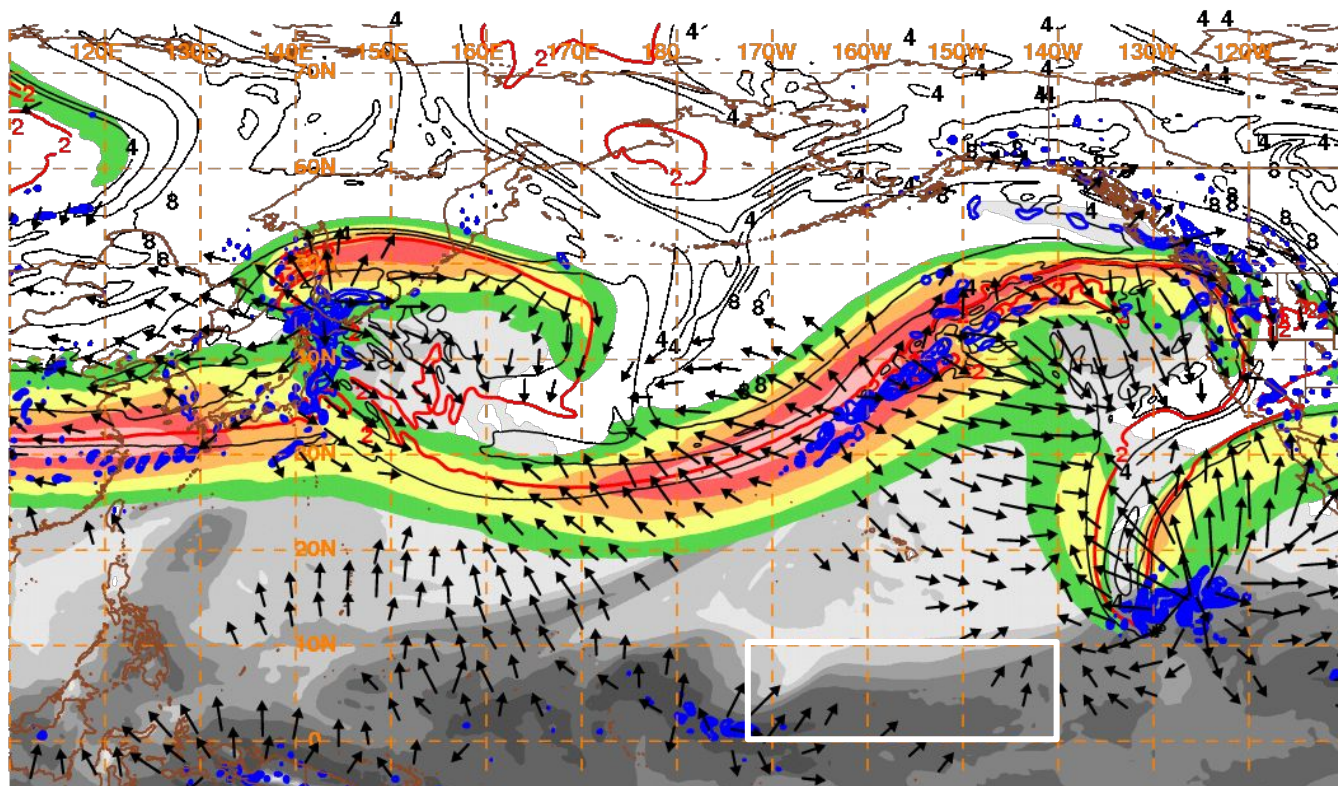
# GFS 42HR FCST Valid 00Z SAT Feb 13: 200 mb DIV Wind Vectors



10 m/s → 160213/0000V042 PW, 250 hPa Isotachs, PV, Irr. Wind, 500 hPa Upward Vert. Vel



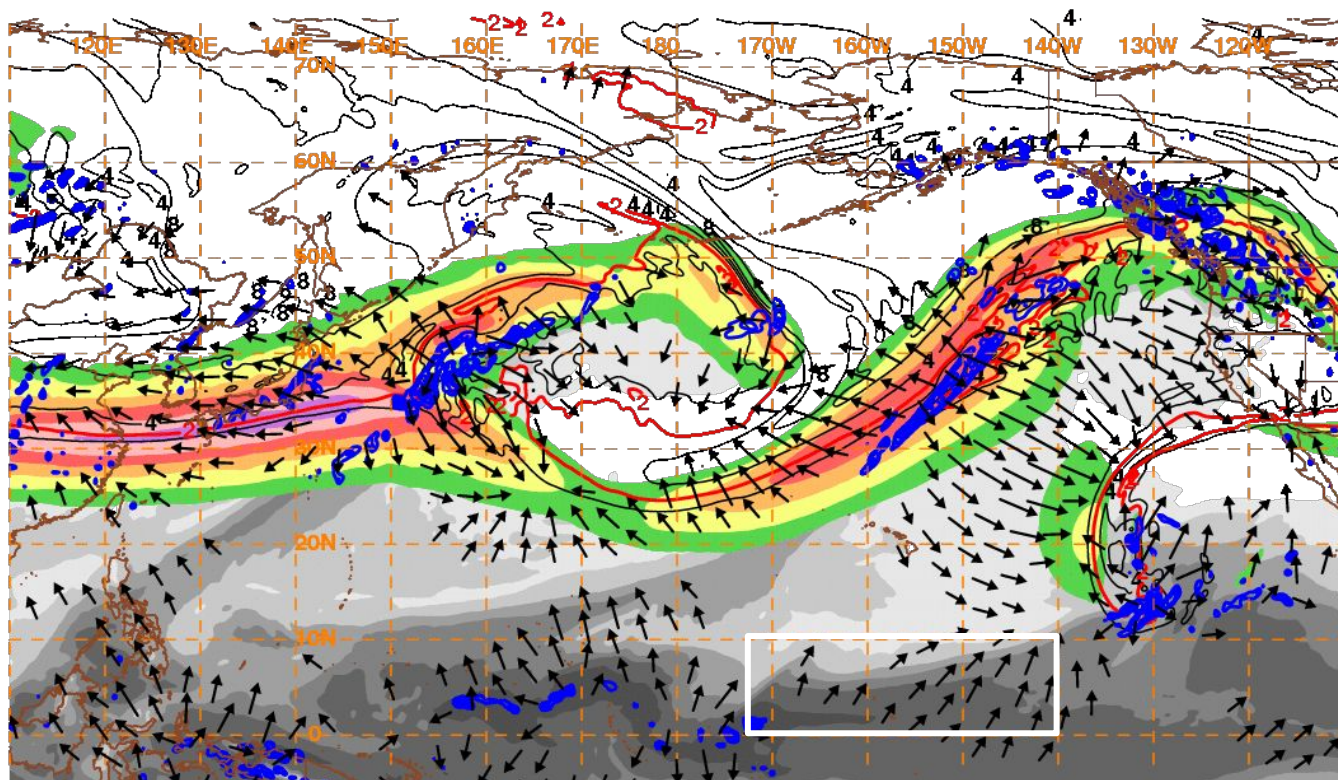
# GFS 66HR FCST Valid 00Z SUN Feb 14: 200 mb DIV Wind Vectors



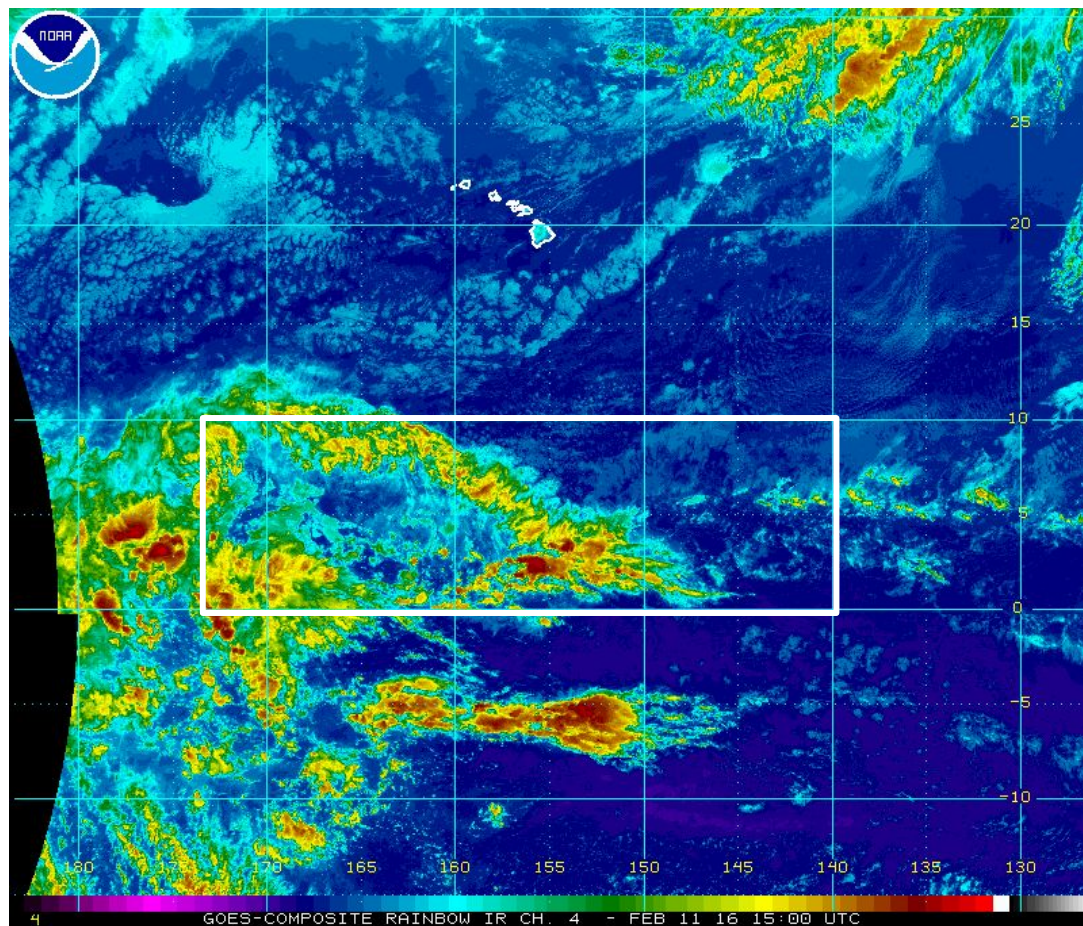
10 m/s → 160214/0000V066 PW, 250 hPa Isotachs, PV, Irr. Wind, 500 hPa Upward Vert. Vel



# GFS 90HR FCST Valid 00Z MON Feb 15: 200 mb DIV Wind Vectors



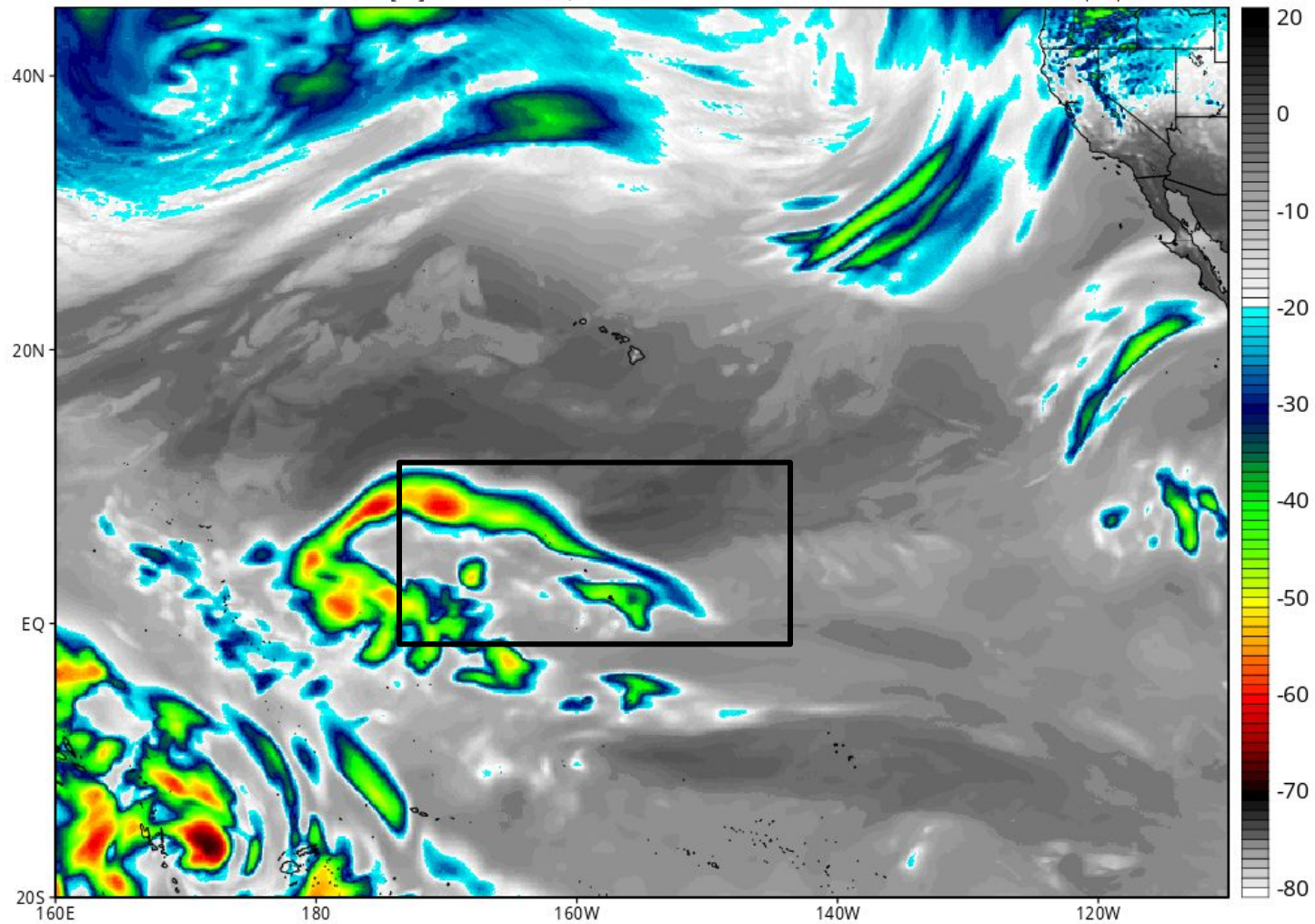
# THU 15Z February 11 Enhanced IR Image



# GFS Simulated IR Brightness Temperature (°C)

Init: 12z Feb 11 2016 Forecast Hour: [12] valid at 00z Fri, Feb 12 2016

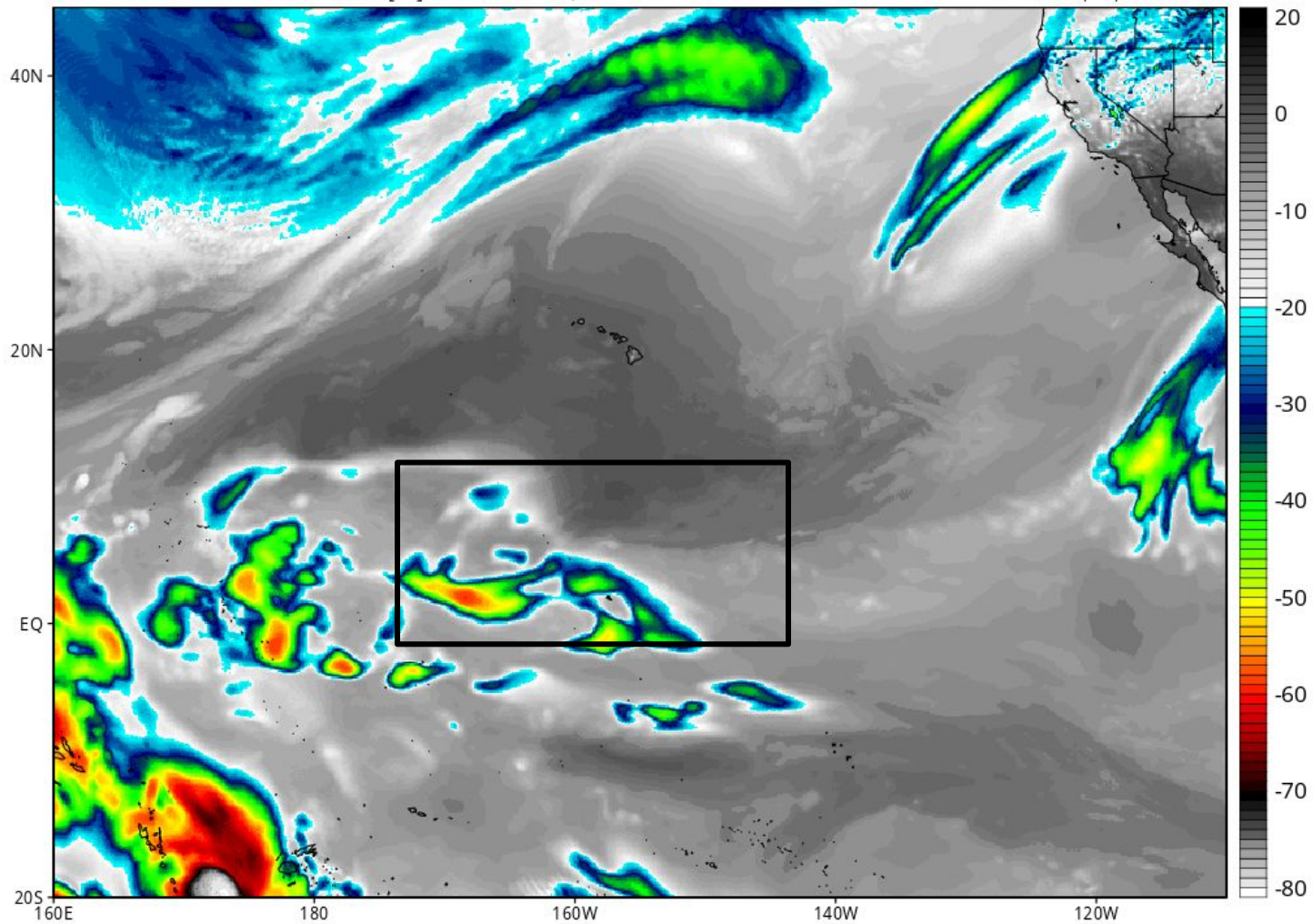
Levi Cowan | [tropicaltidbits.com](http://tropicaltidbits.com)



# GFS Simulated IR Brightness Temperature (°C)

Init: 12z Feb 11 2016 Forecast Hour: [36] valid at 00z Sat, Feb 13 2016

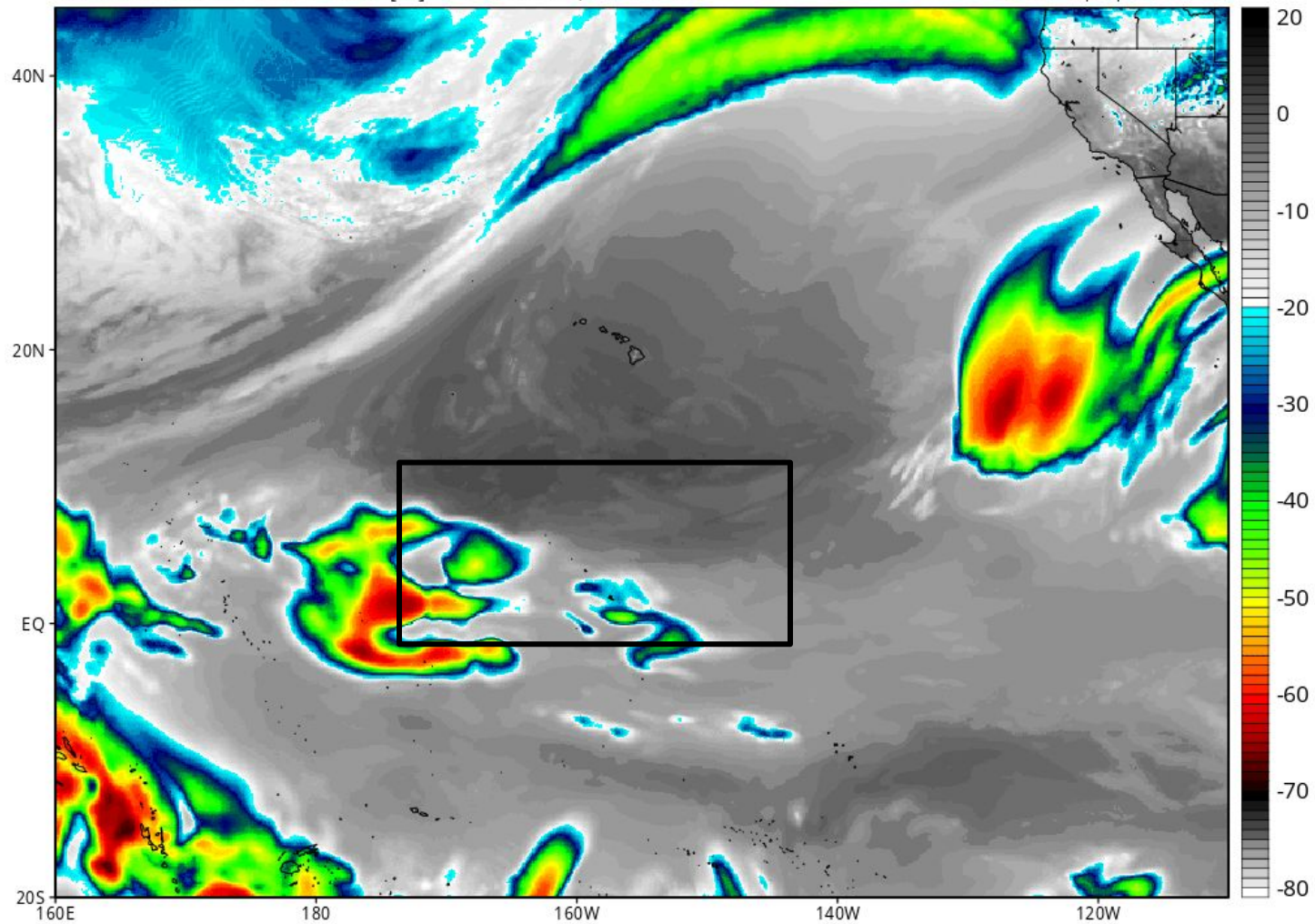
Levi Cowan | tropicaltidbits.com



# GFS Simulated IR Brightness Temperature (°C)

Init: 12z Feb 11 2016 Forecast Hour: [60] valid at 00z Sun, Feb 14 2016

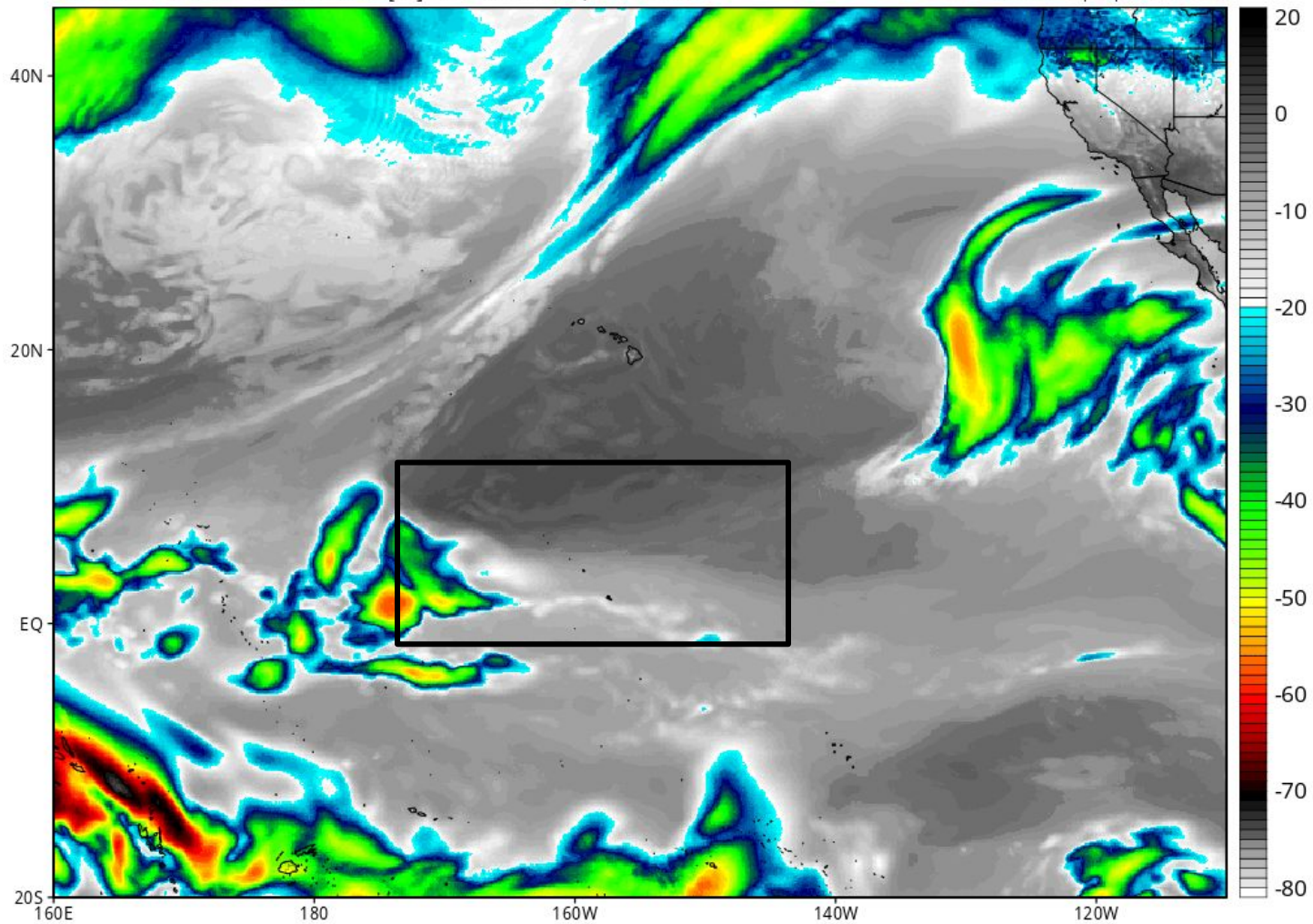
Levi Cowan | tropicaltidbits.com



# GFS Simulated IR Brightness Temperature (°C)

Init: 12z Feb 11 2016 Forecast Hour: [84] valid at 00z Mon, Feb 15 2016

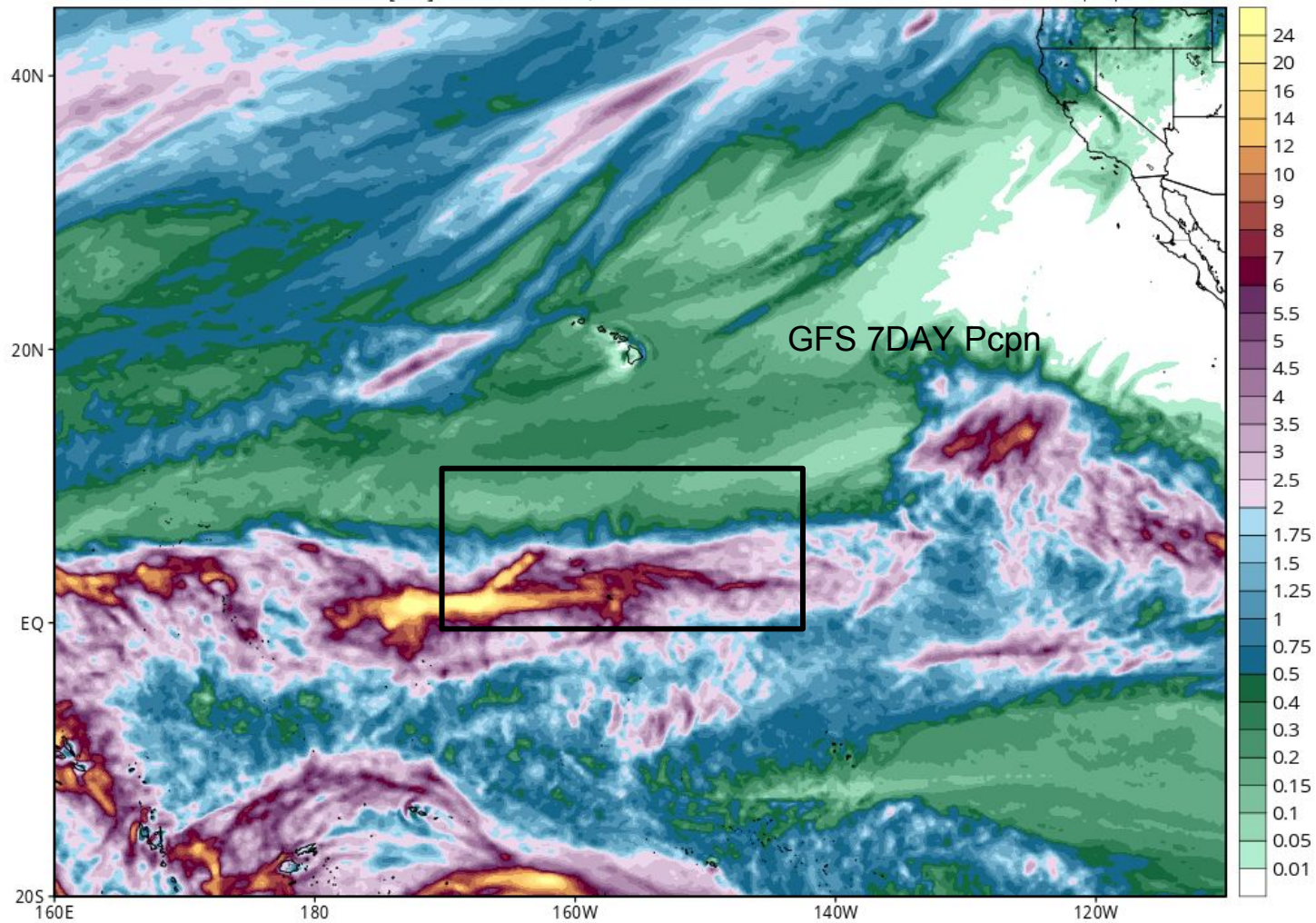
Levi Cowan | tropicaltidbits.com



# GFS Total Accumulated Precipitation (inches) from 06z11Feb2016 to 00z18Feb2016

Init: 06z Feb 11 2016 Forecast Hour: [162] valid at 00z Thu, Feb 18 2016

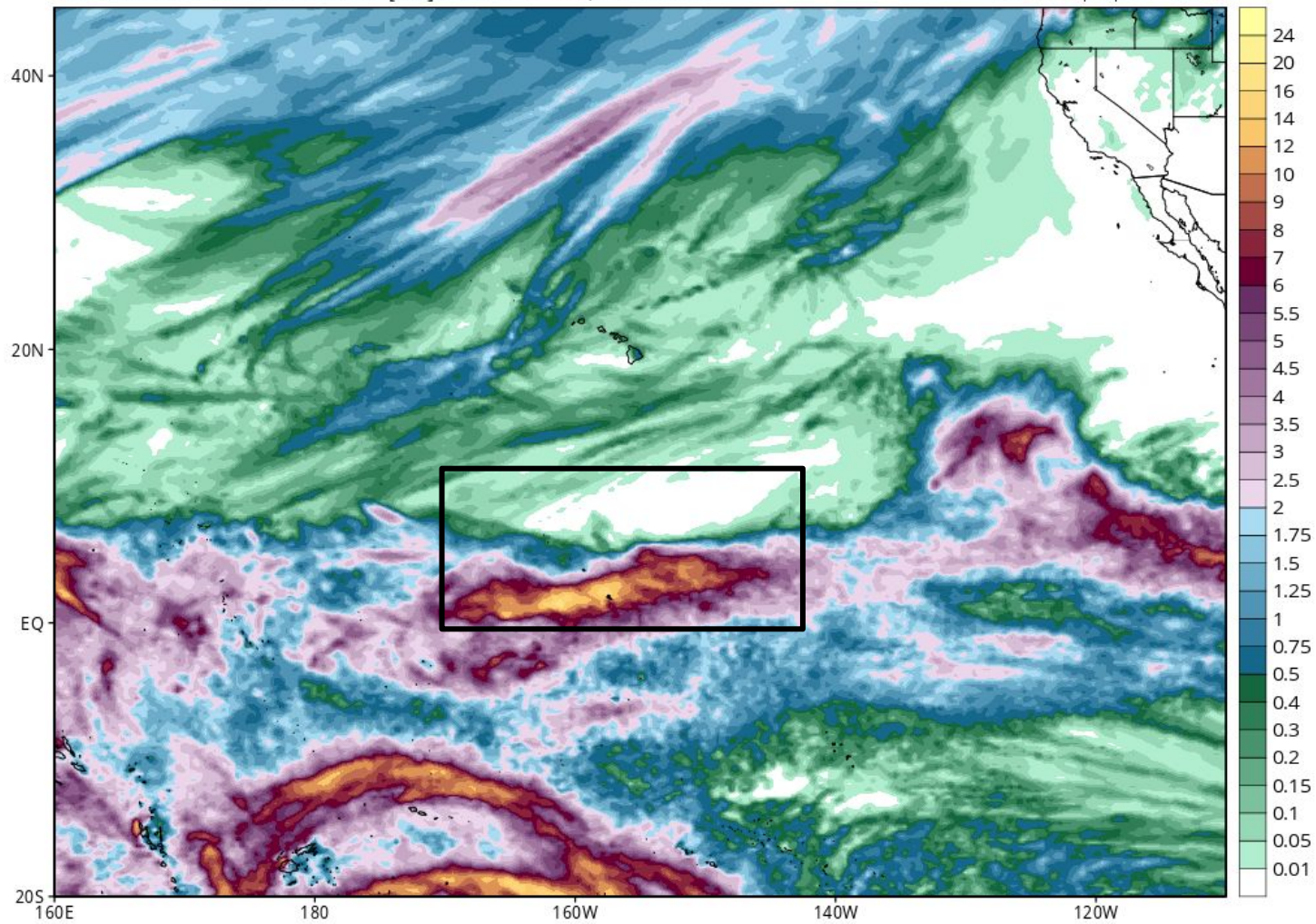
Levi Cowan | tropicaltidbits.com



# GEM Total Accumulated Precipitation (inches) from 00z11Feb2016 to 00z18Feb2016

Init: 00z Feb 11 2016 Forecast Hour: [168] valid at 00z Thu, Feb 18 2016

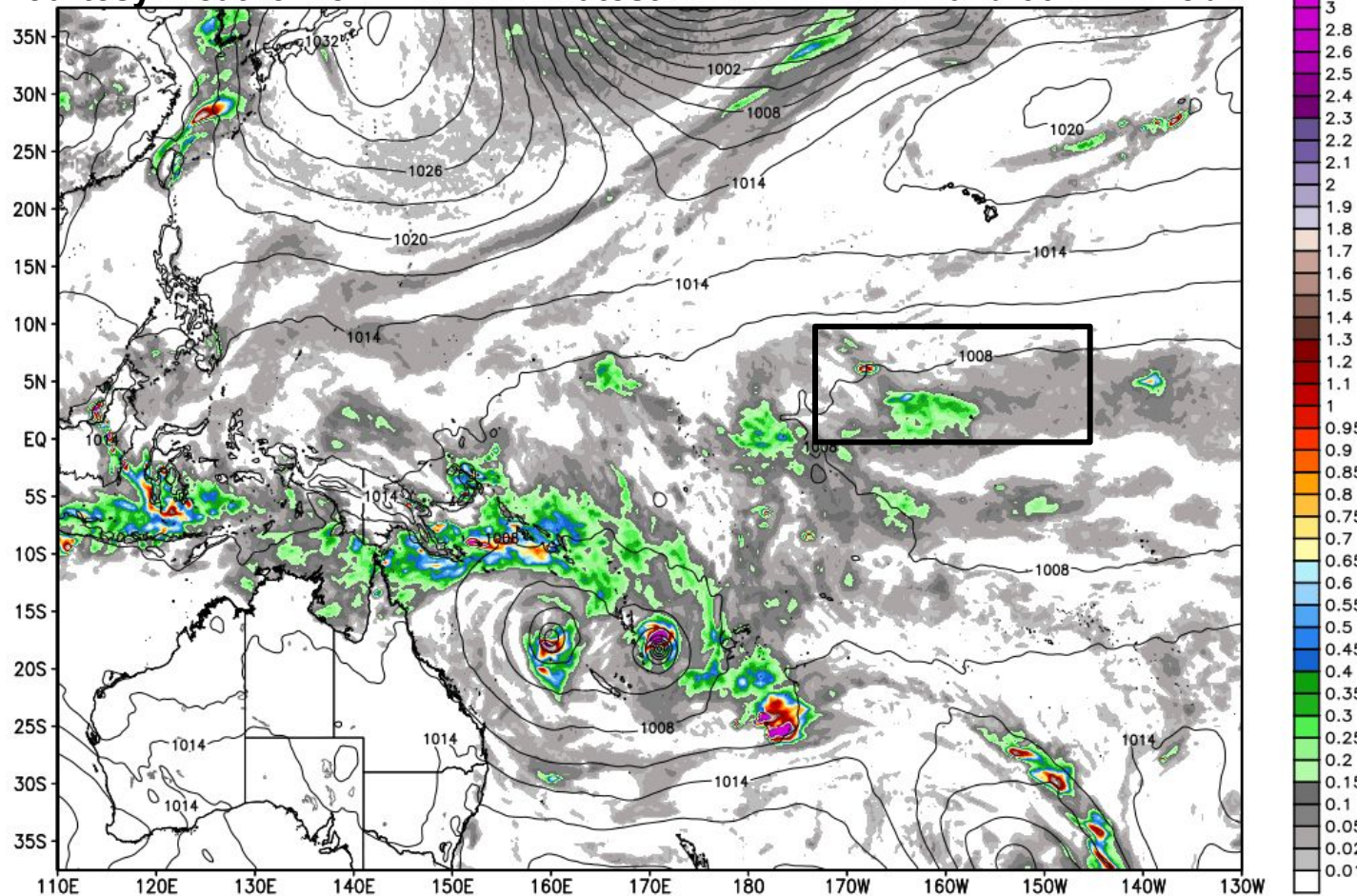
Levi Cowan | tropicaltidbits.com



ECMWF 6-hourly Precipitation [inches] between 18Z11FEB2016 -- 00Z12FEB2016 & MSLP [hPa]  
INIT: 00Z11FEB2016 fx: [024] hr --> Fri 00Z12FEB2016

Courtesy WeatherBell

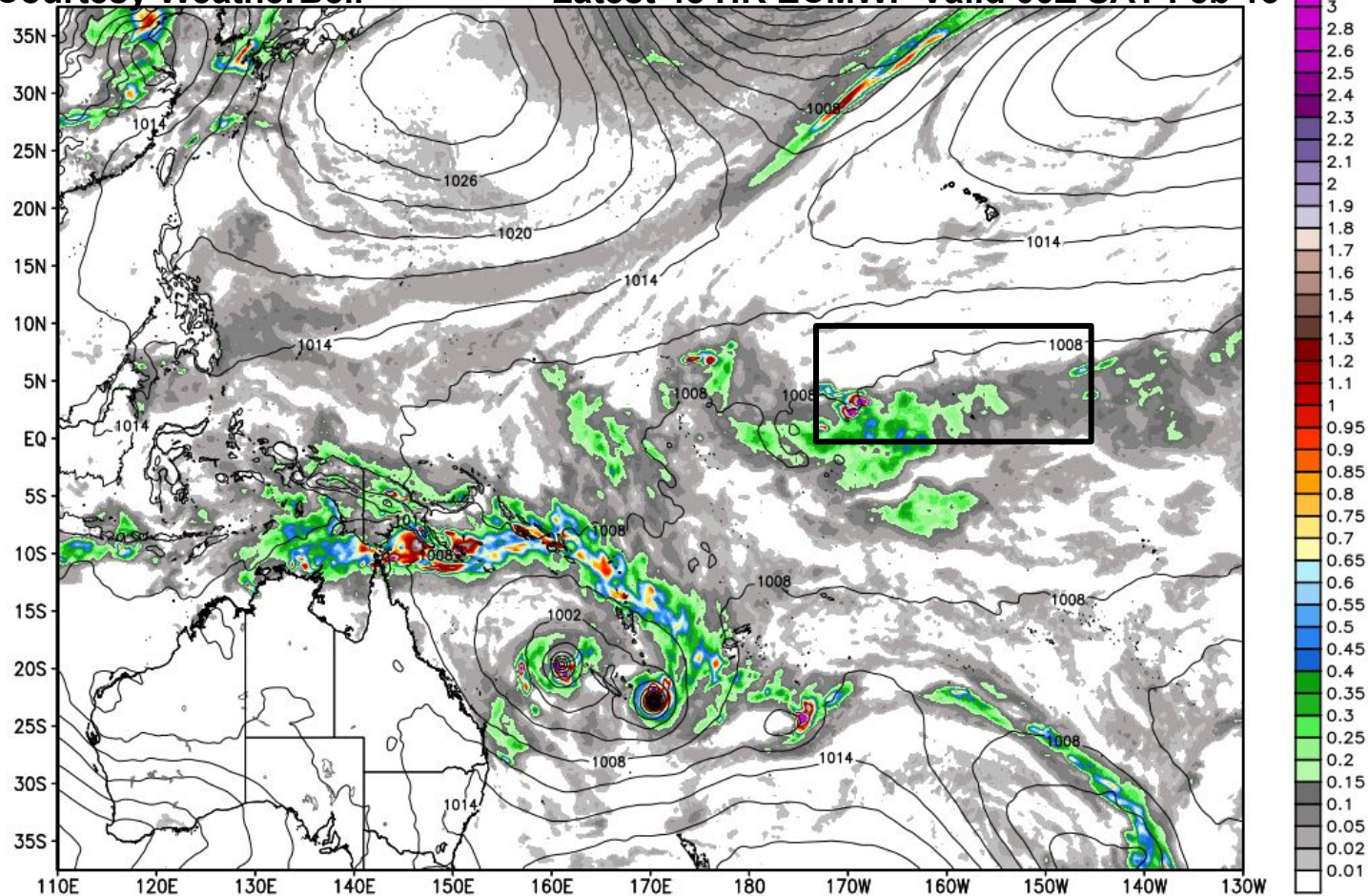
Latest 24 HR ECMWF Valid 00Z FRI Feb 12



ECMWF 6-hourly Precipitation [inches] between 18Z12FEB2016 -- 00Z13FEB2016 & MSLP [hPa]  
INIT: 00Z11FEB2016 fx: [048] hr --> Sat 00Z13FEB2016

Courtesy WeatherBell

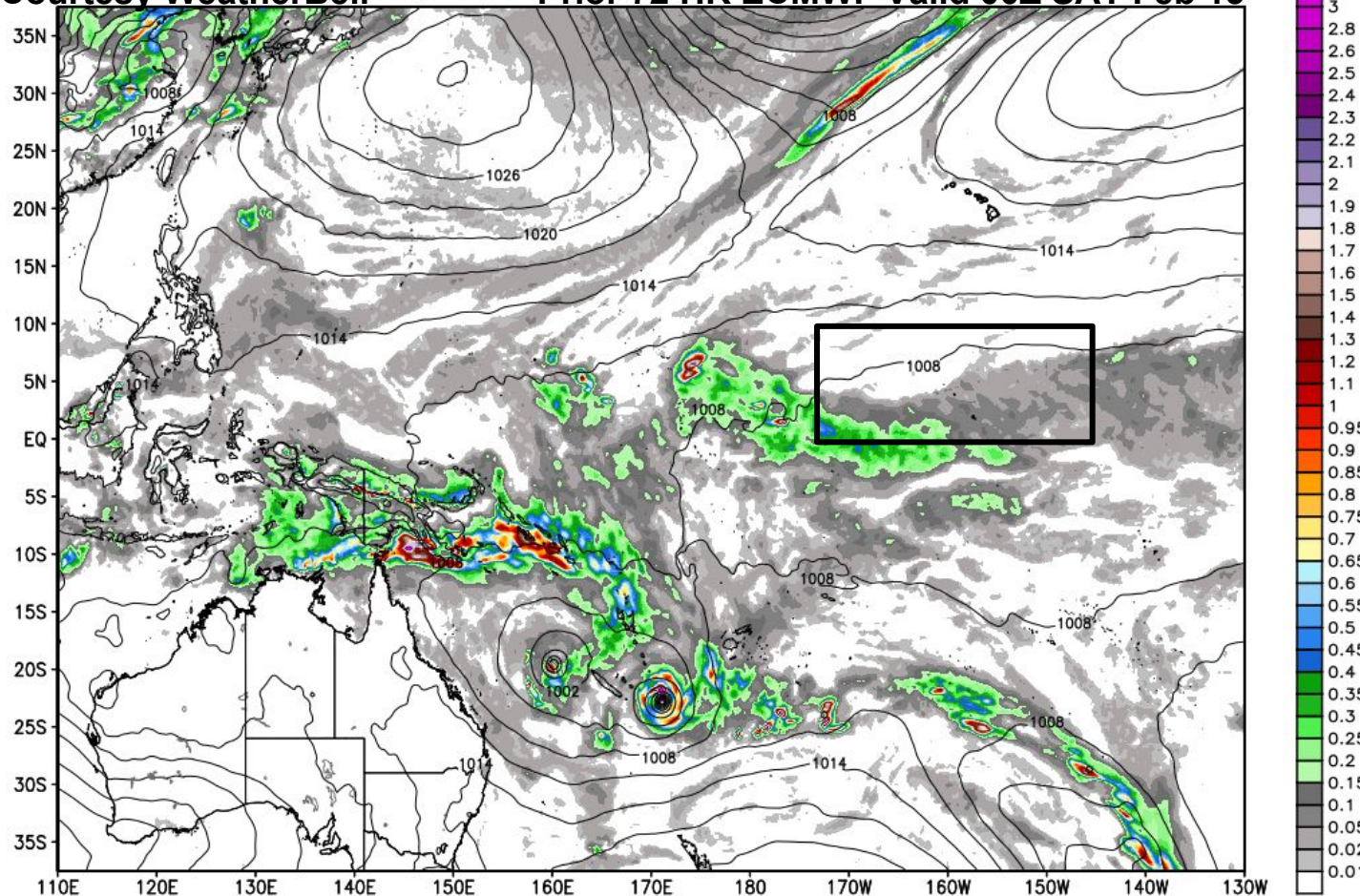
Latest 48 HR ECMWF Valid 00Z SAT Feb 13



ECMWF 6-hourly Precipitation [inches] between 18Z12FEB2016 -- 00Z13FEB2016 & MSLP [hPa]  
INIT: 00Z10FEB2016 fx: [072] hr --> Sat 00Z13FEB2016

Courtesy WeatherBell

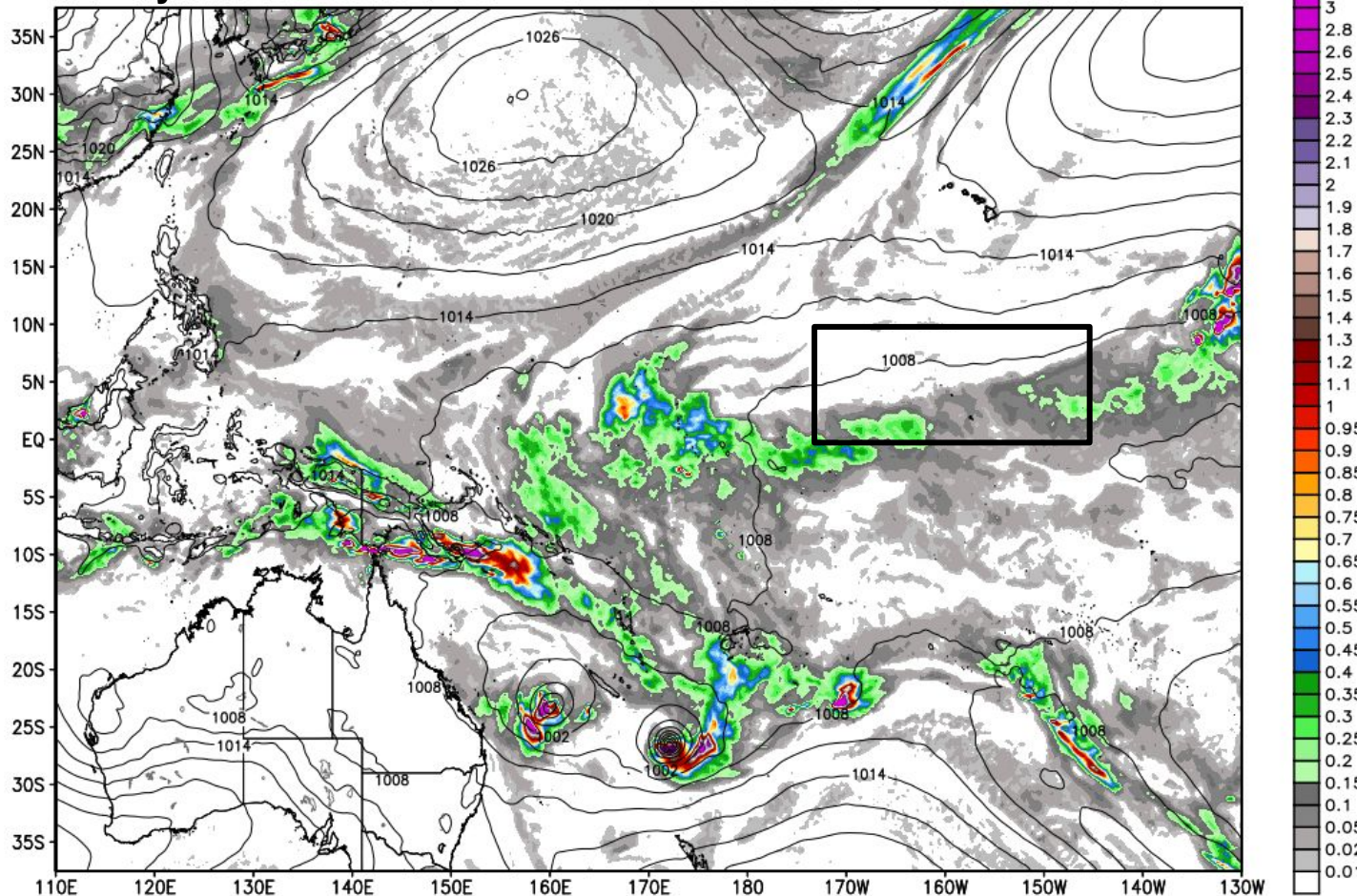
Prior 72 HR ECMWF Valid 00Z SAT Feb 13



ECMWF 6-hourly Precipitation [inches] between 18Z13FEB2016 -- 00Z14FEB2016 & MSLP [hPa]  
INJT: 00Z11FEB2016 fx: [072] hr --> Sun 00Z14FEB2016

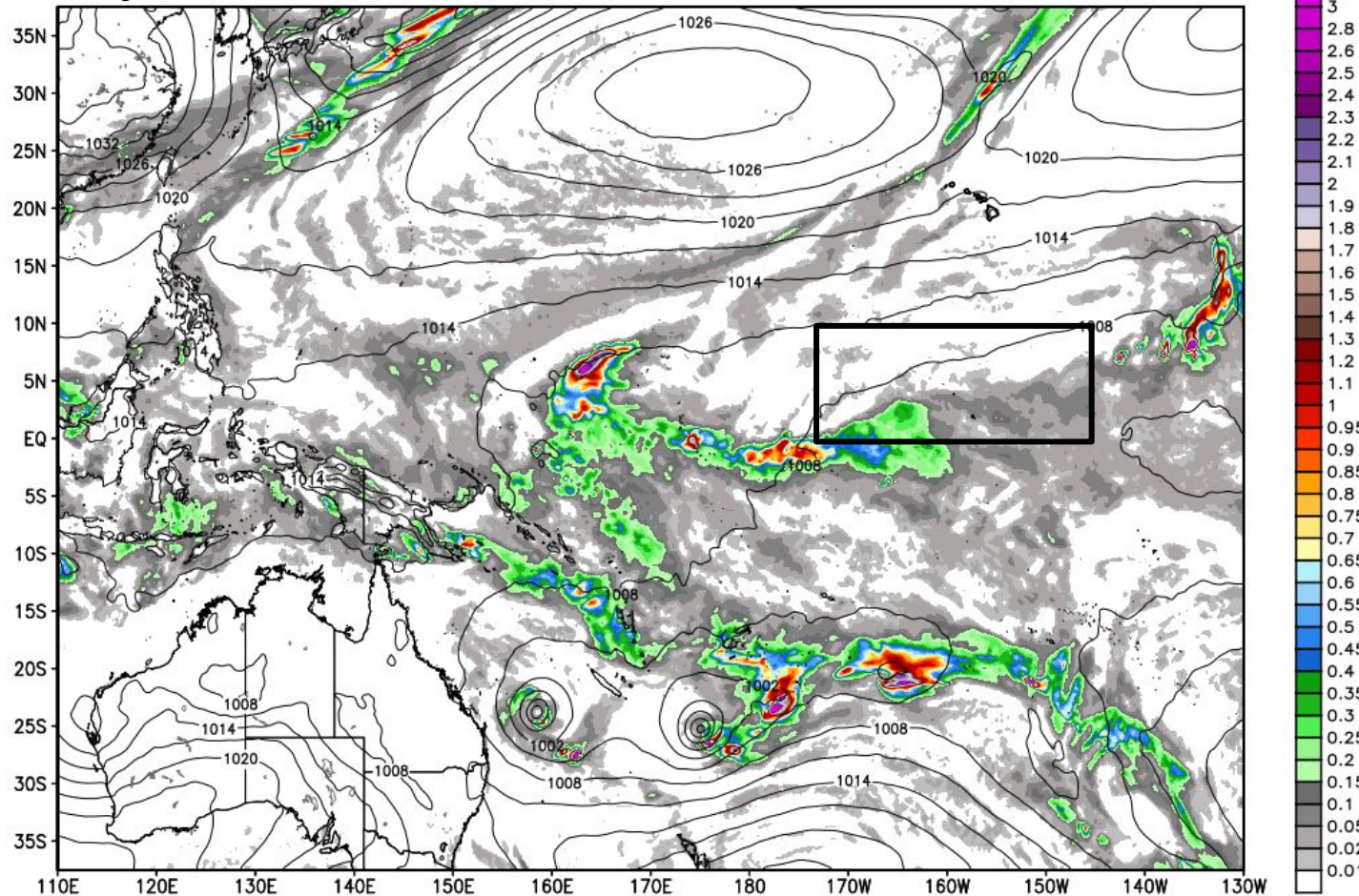
Courtesy WeatherBell

Latest 72 HR ECMWF Valid 00Z SUN Feb 14



ECMWF 6-hourly Precipitation [inches] between 18Z14FEB2016 -- 00Z15FEB2016 & MSLP [hPa]  
INIT: 00Z11FEB2016 fx: [096] hr --> Mon 00Z15FEB2016

Courtesy WeatherBell Latest 96 HR ECMWF Valid 00Z MON Feb 15

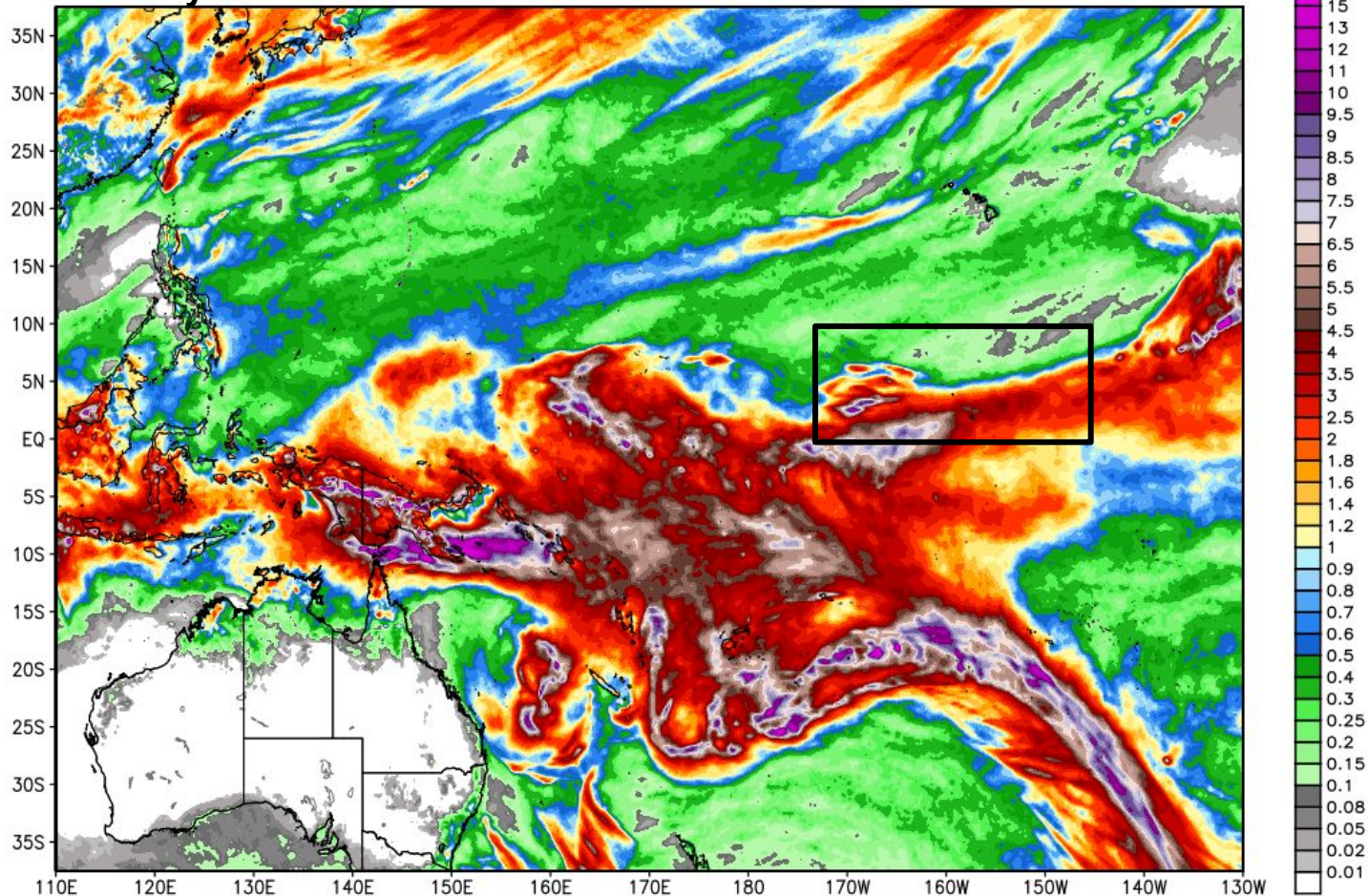


ECMWF Total Precipitation [inches] between 00Z11FEB2016 -- 00Z18FEB2016  
INIT: 00Z11FEB2016 fx: [168] hr --> Thu 00Z18FEB2016

Courtesy WeatherBell

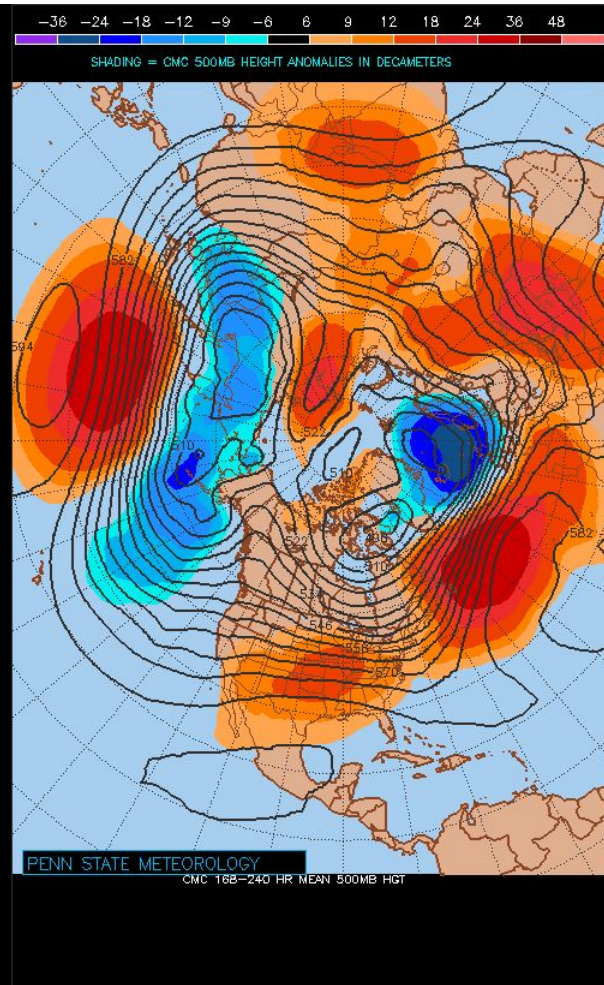
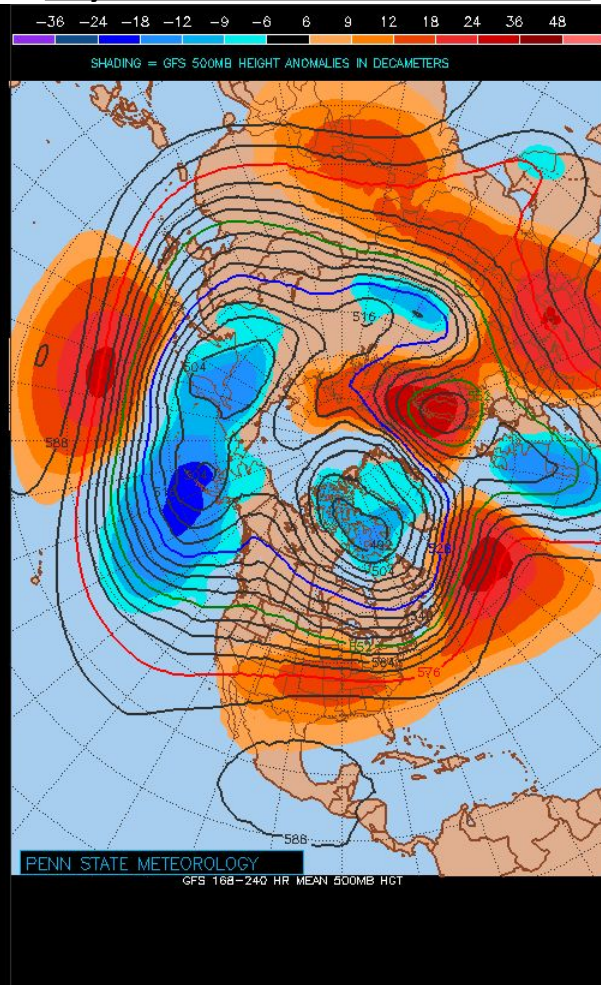
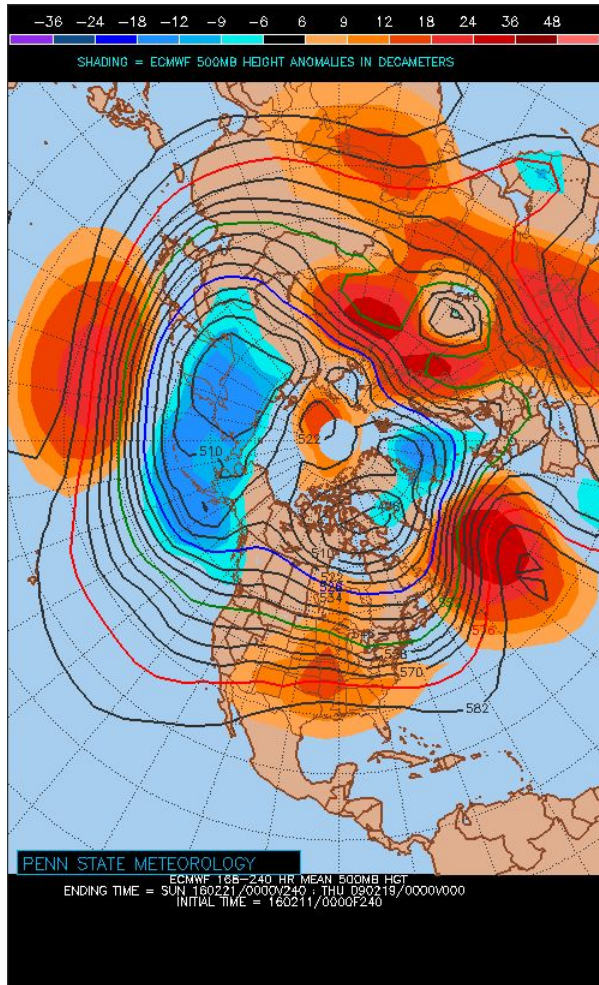
7-DAY ECMWF PCPN thru Feb 18

Max 29.1 in



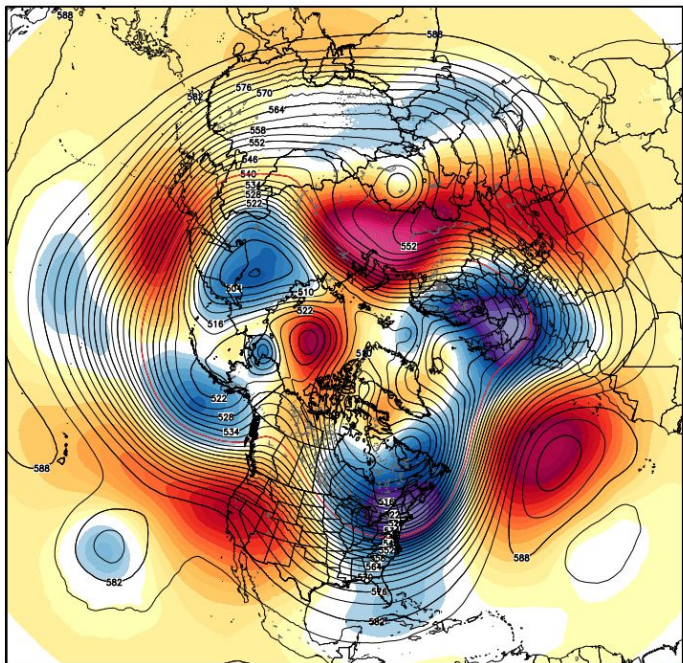
# Medium - Long Range Forecast

Day 7-10 Initialized 00Z THU 11 Feb



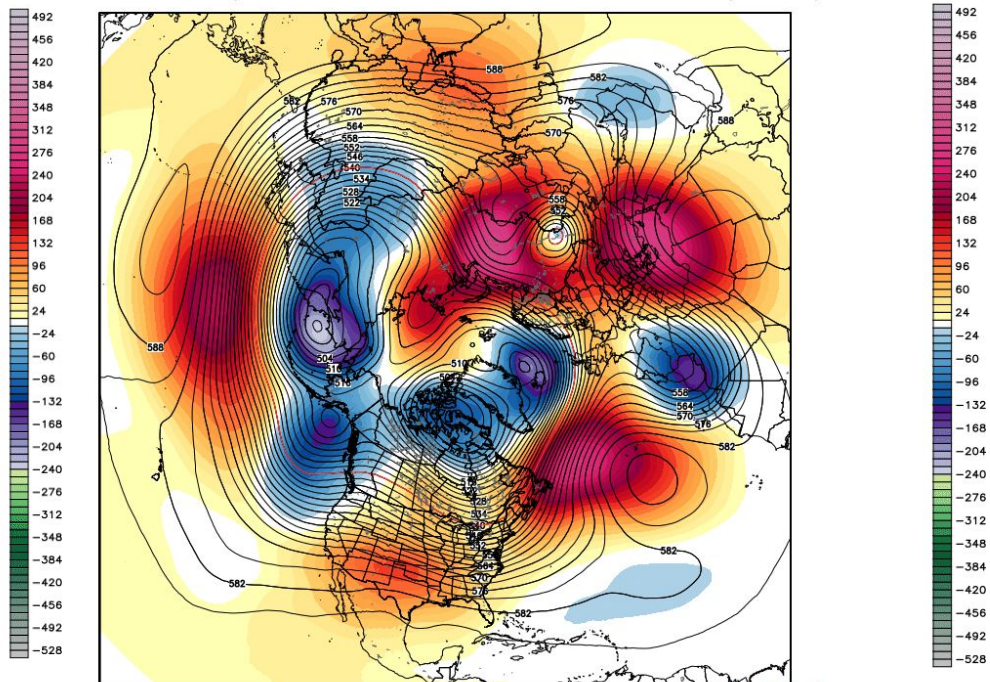
## ECMWF 5-Day Averaged 500Z Height Anomalies

ECMWF 500 hPa Geopotential Height [dm] & Anomaly [m] fx: [120] hr --> Tue 12Z16FEB2016  
INIT: 12Z11FEB2016 5-day Mean between 12Z11FEB2016 & 12Z16FEB2016 Day 0 - Day 5



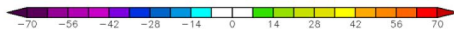
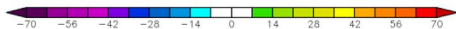
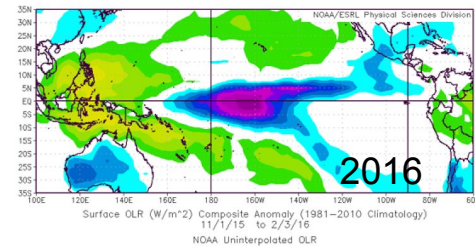
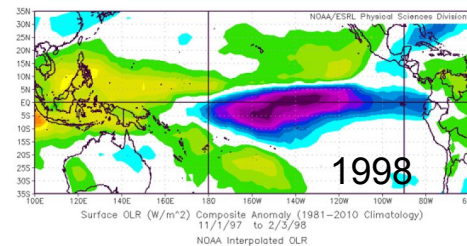
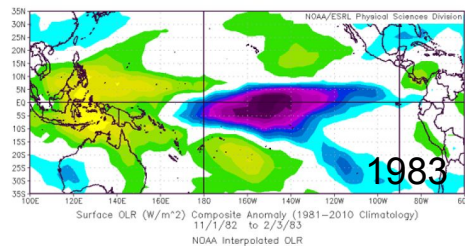
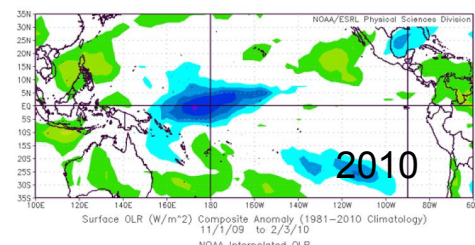
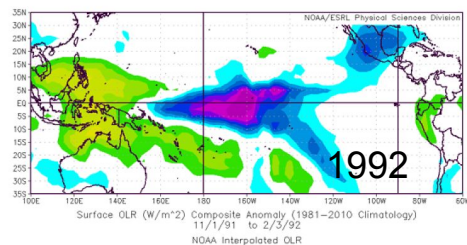
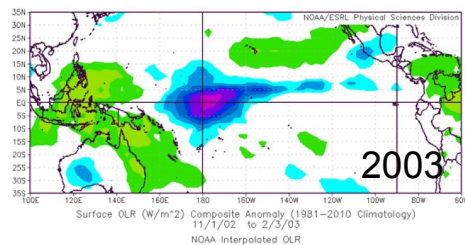
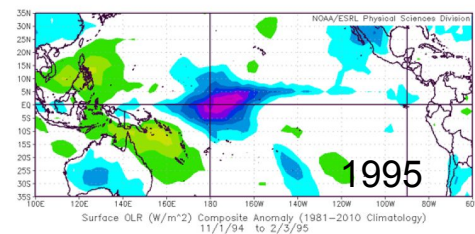
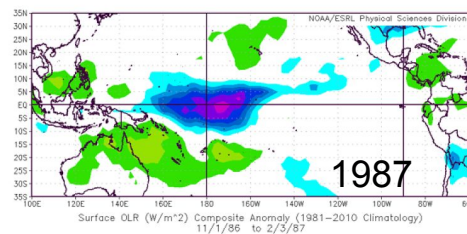
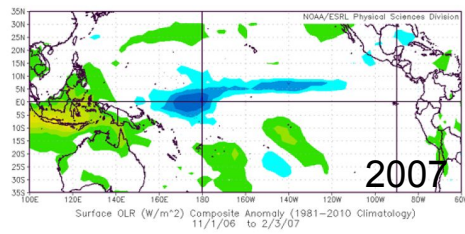
-278 | 409 m

500 hPa Geopotential Height [dm] & Anomaly [m] fx: [240] hr --> Sun 12Z21FEB2016  
2Z11FEB2016 5-day Mean between 12Z16FEB2016 & 12Z21FEB2016 Day 5 - Day 10



-328 | 371 m

# Observed OLR Anomalies : 1 Nov - 3 Feb



# Observed OLR Anomalies : 7 Feb - 7 Mar

