

Summary of Key Briefing Points
11:00-12:00 MST Tue, Mar 8, 2016

Current Conditions as of Thu 12Z-15Z Mar 4

Tropics and Mid-latitudes

Over the Tropical Pacific:

- Active along “filament” extending around western portion of anticyclone - north to HI
- Most other activity in Tropics is west and south of Dateline
- PW maximum extending to ~10N near Dateline

Tropical Outlook

- Main convection forecast to be near Dateline and east of ~160W - north of Equator
- Reemergence of SPCZ over next few days?

Midlatitude Conditions/Outlook

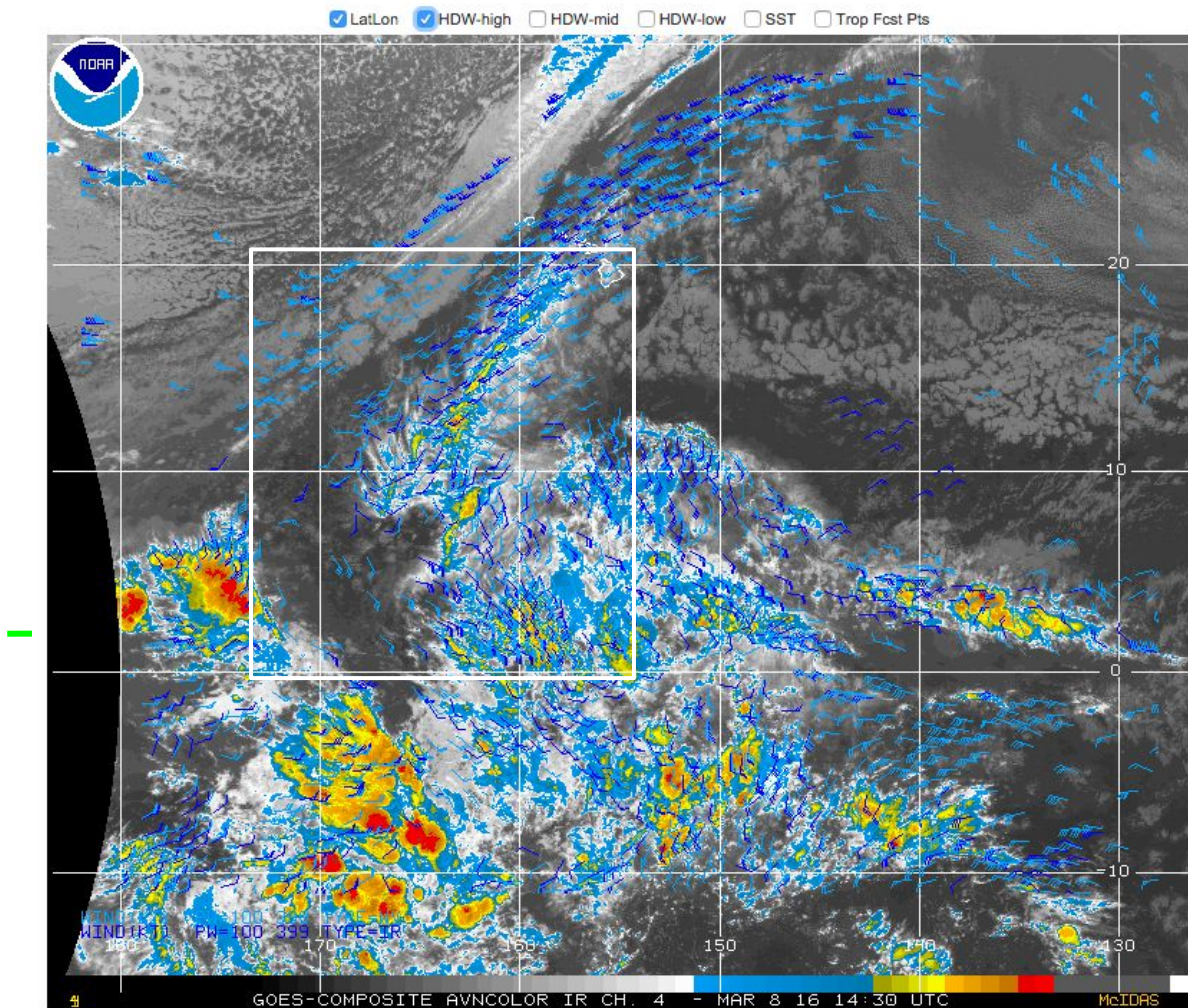
Short Term:

- Front approaching HI this morning but moisture flux is not connected to Tropical plume
- Accompanying wave to impact N. California on Friday
- Lower MI valley to receive copious rain over next few days

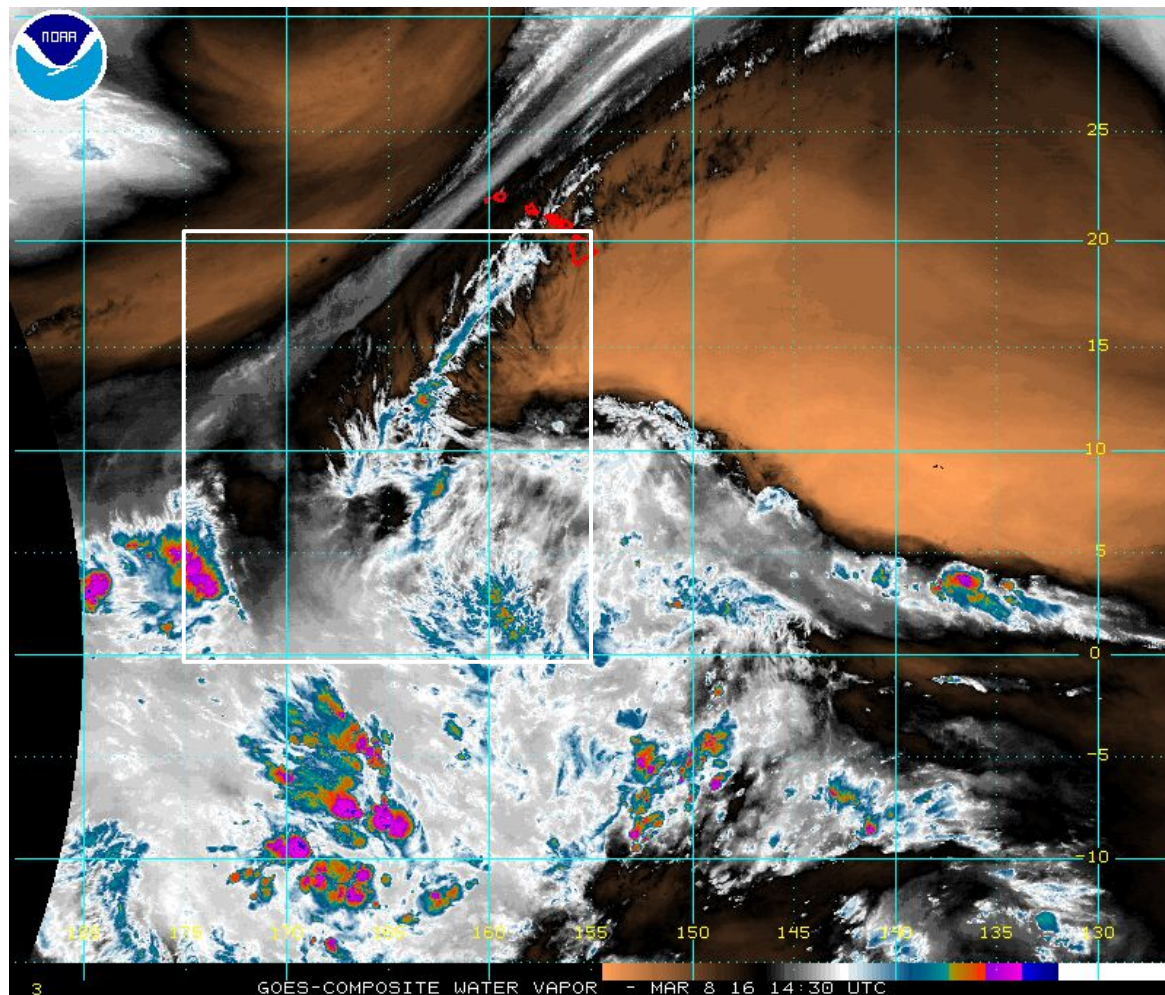
Medium - Long Term:

- Uncertainty remains as to whether trailing shortwave will stall system over Bay area

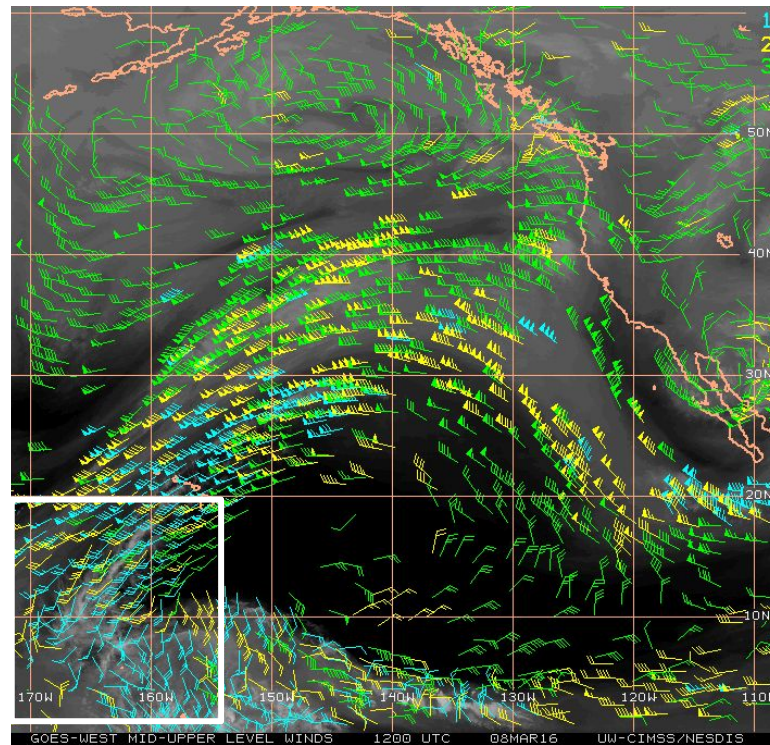
Tue 14:30Z



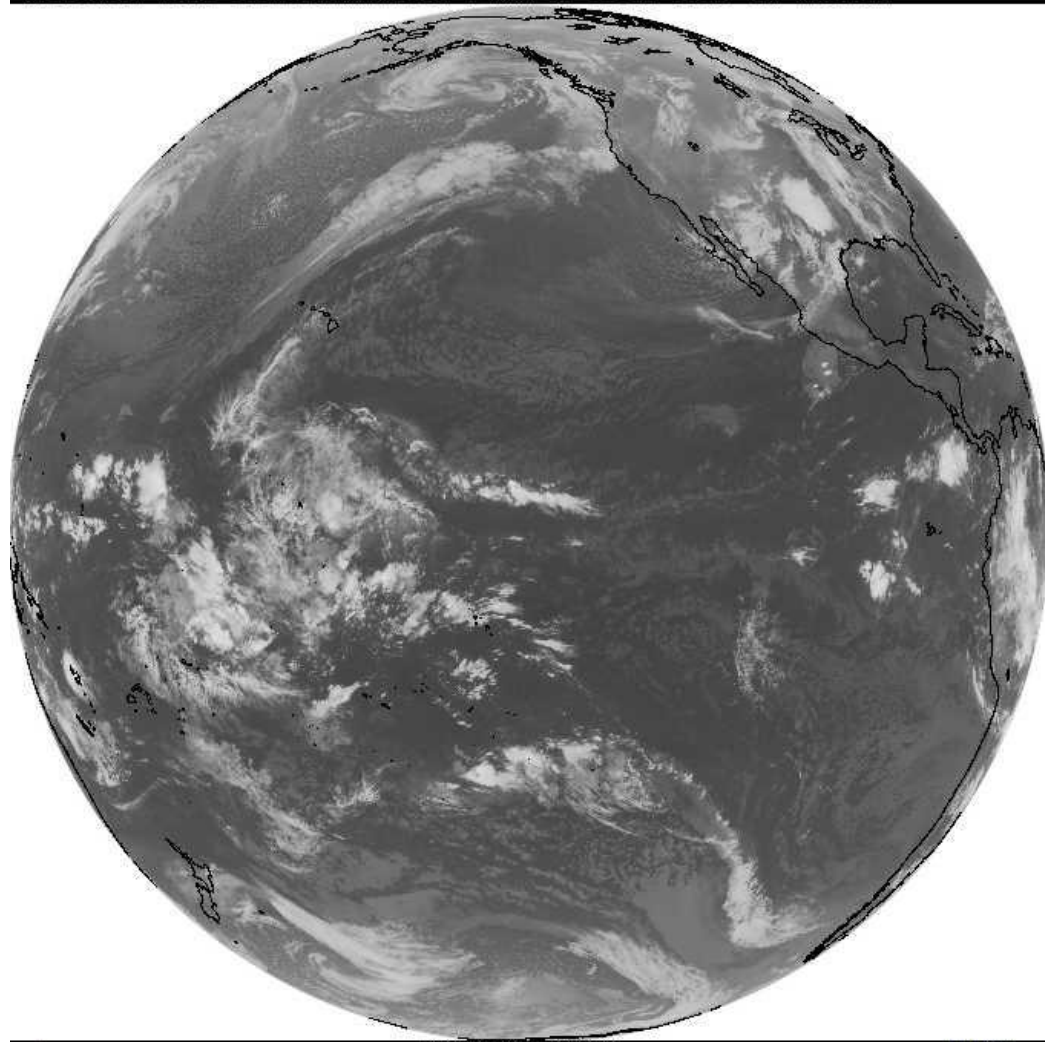
Tue 14:30Z



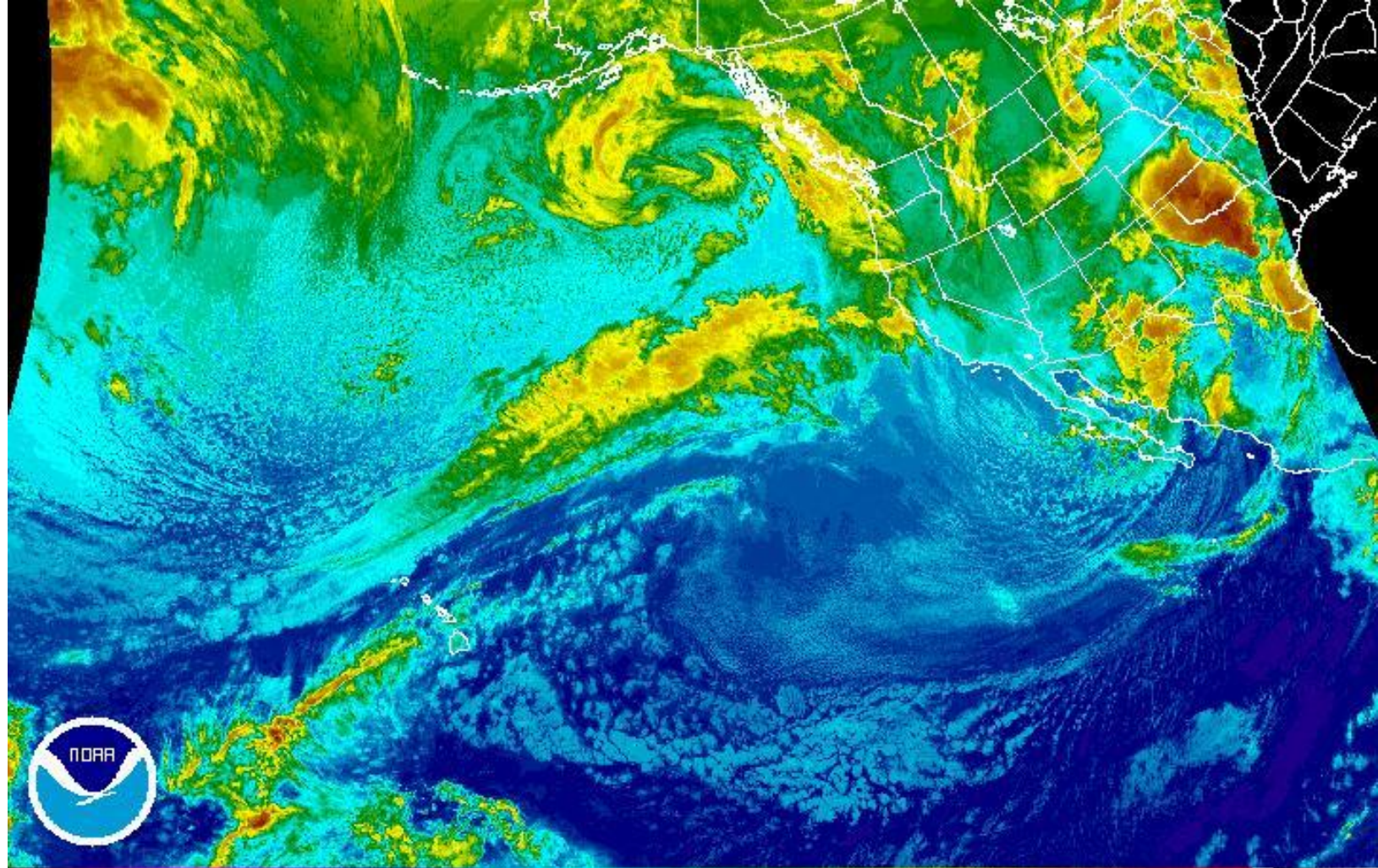
8 Mar 12Z Satellite Winds



Tue 12Z



8 March 14z:
GOES IR



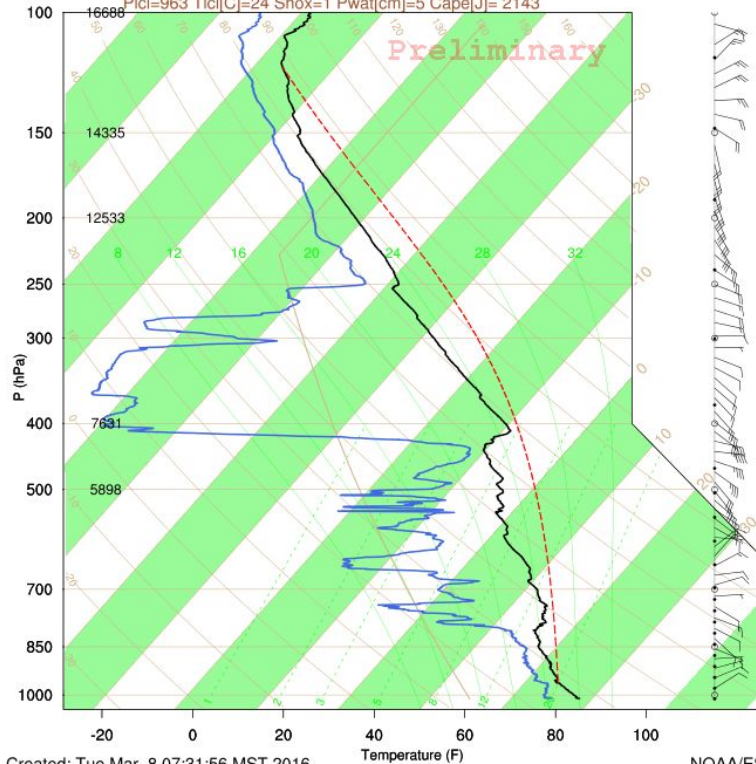
4

GOES-WEST RAINBOW IR CH. 4 - MAR 8 16 14:00 UTC

Kiritimati Is: 03/08/2016 1118Z 2.01N 157.40W

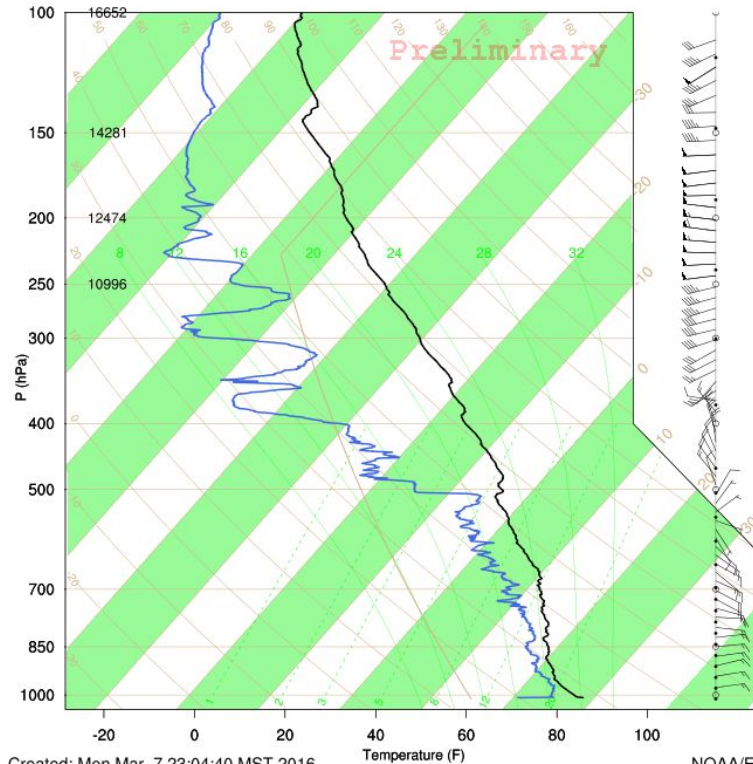
Ptcl=963 Tlcl[C]=24 Shox=1 Pwat[cm]=5 Cape[J]= 2143

Preliminary



Ronald H. Brown: 03/08/2016 0208Z (-0.0699282S,124.55W)

Preliminary

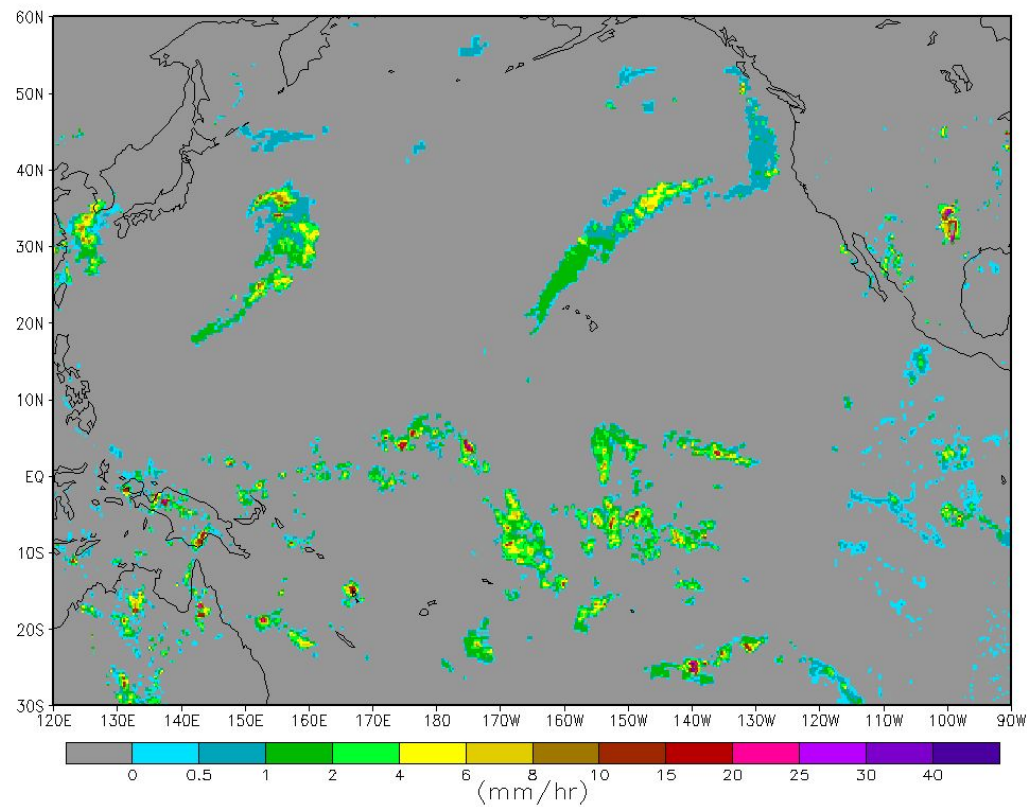


NOAA/ESRL PSD

NOAA/ESRL PSD

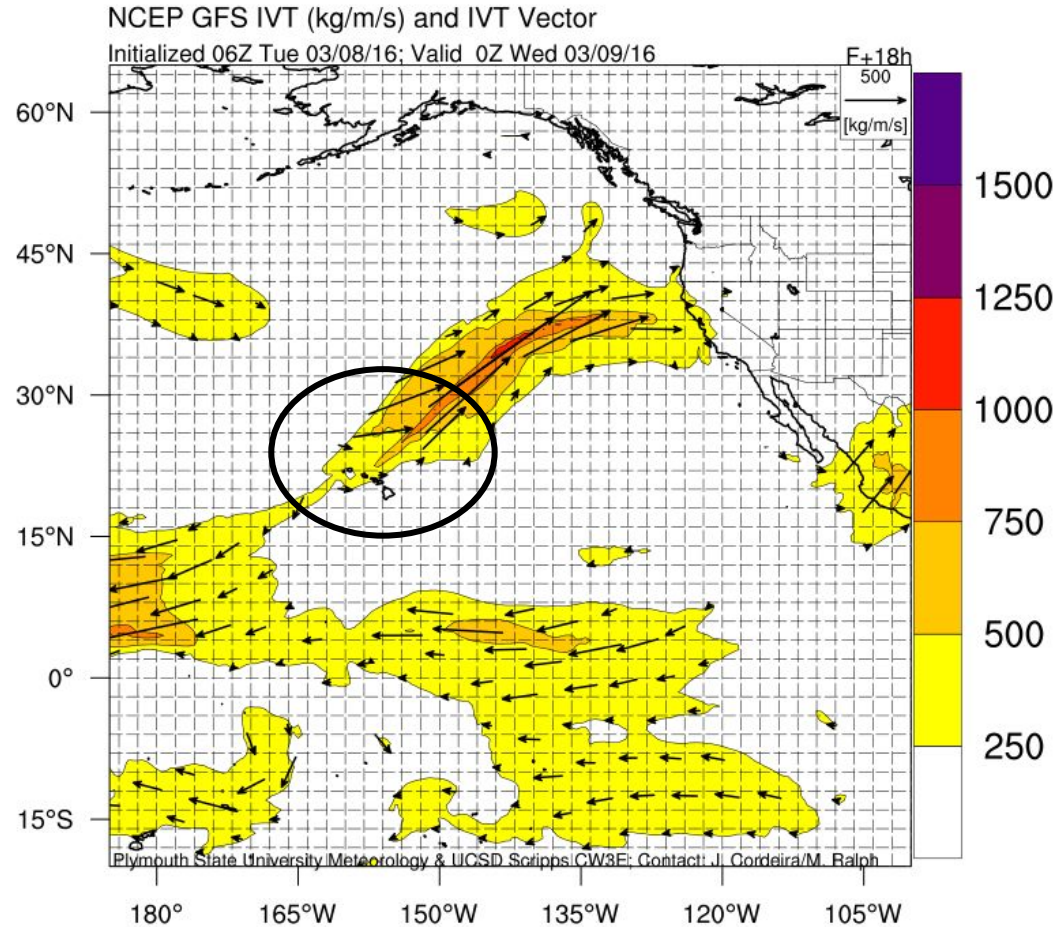
Tue 12Z CMORPH Rainfall

CMORPH_RAW_RT @ 2016-Mar-08 12:00Z

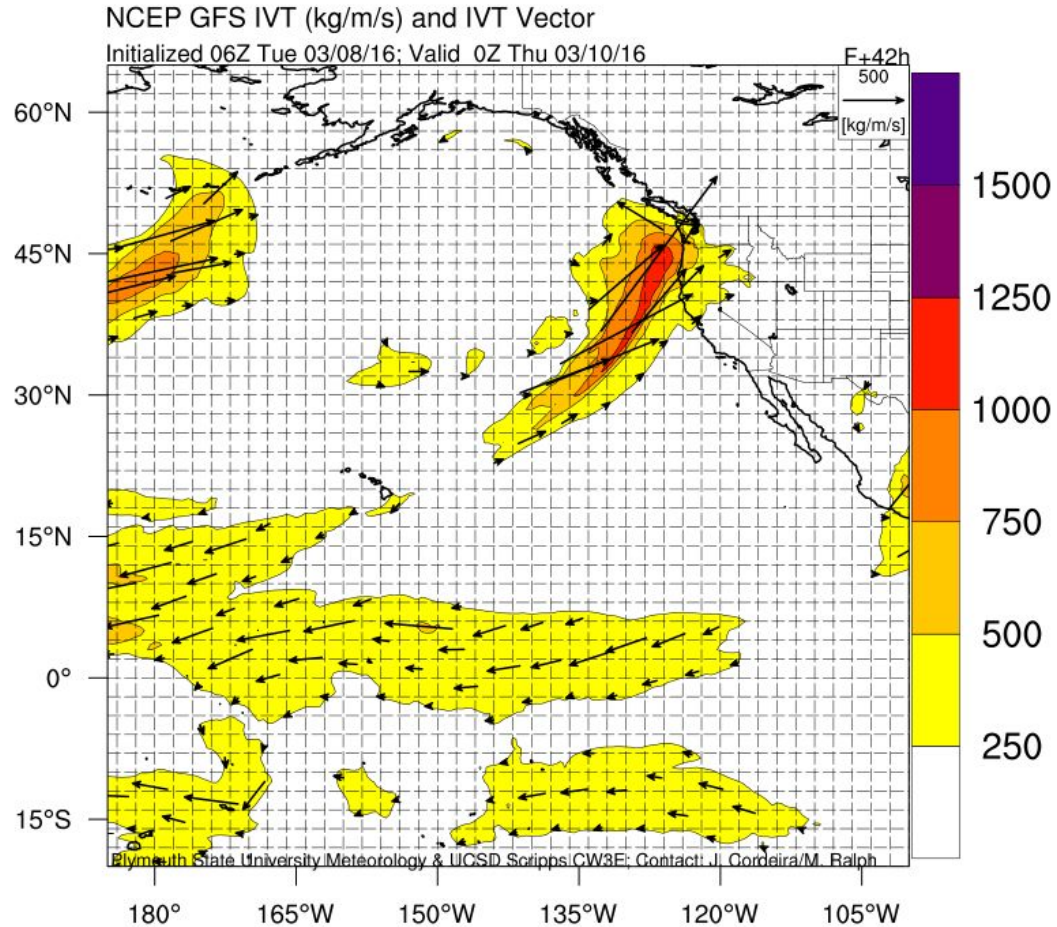


GFS 06Z IVT, IWV, Precip Forecasts

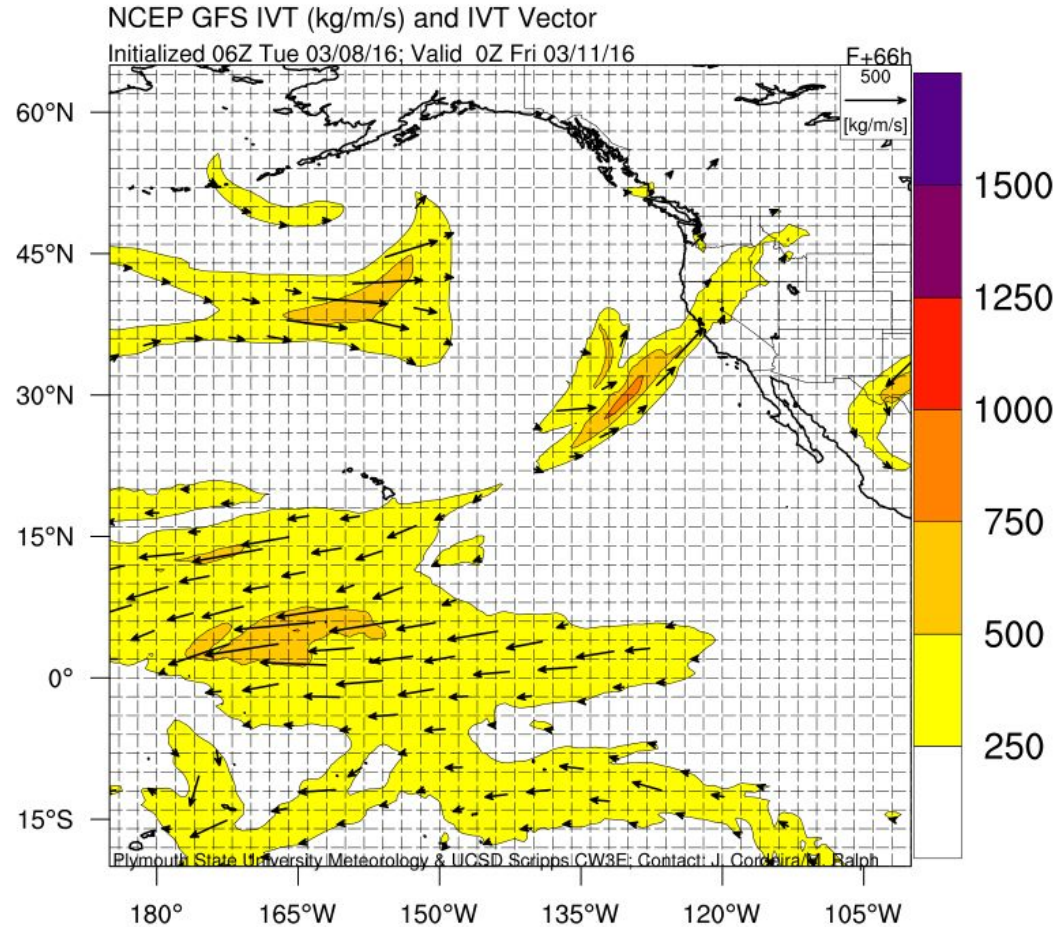
GFS 06Z IVT Forecast Valid 00Z WED



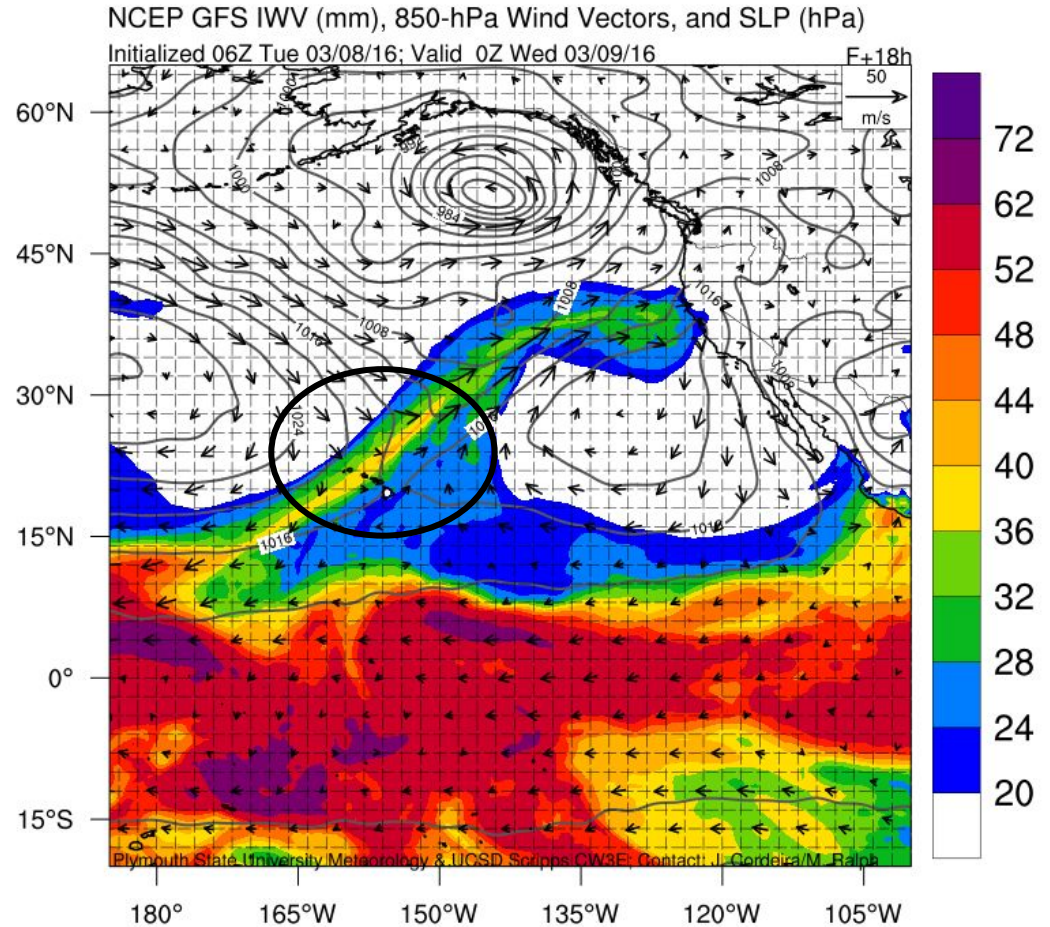
GFS 06Z IVT Forecast Valid 00Z THU



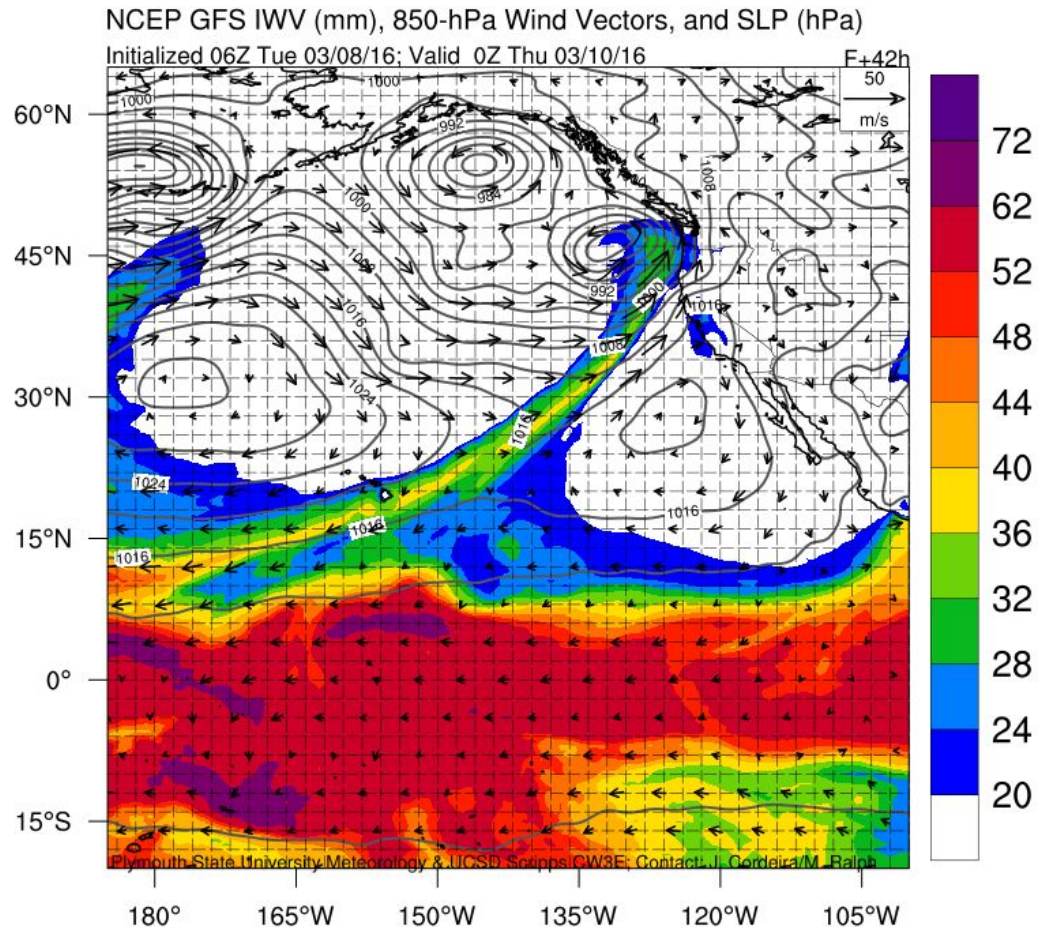
GFS 06Z IVT Forecast Valid 00Z Fri



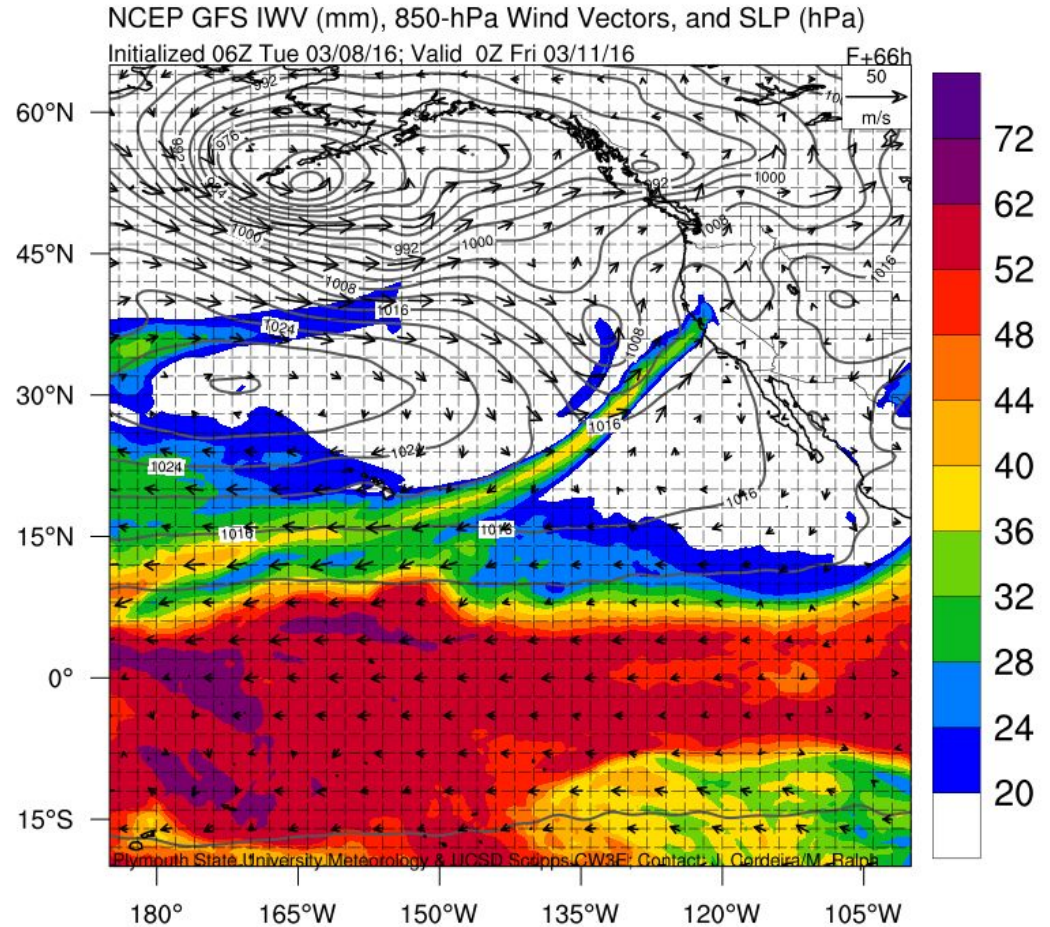
GFS 06Z I WV Forecast Valid 00Z WED



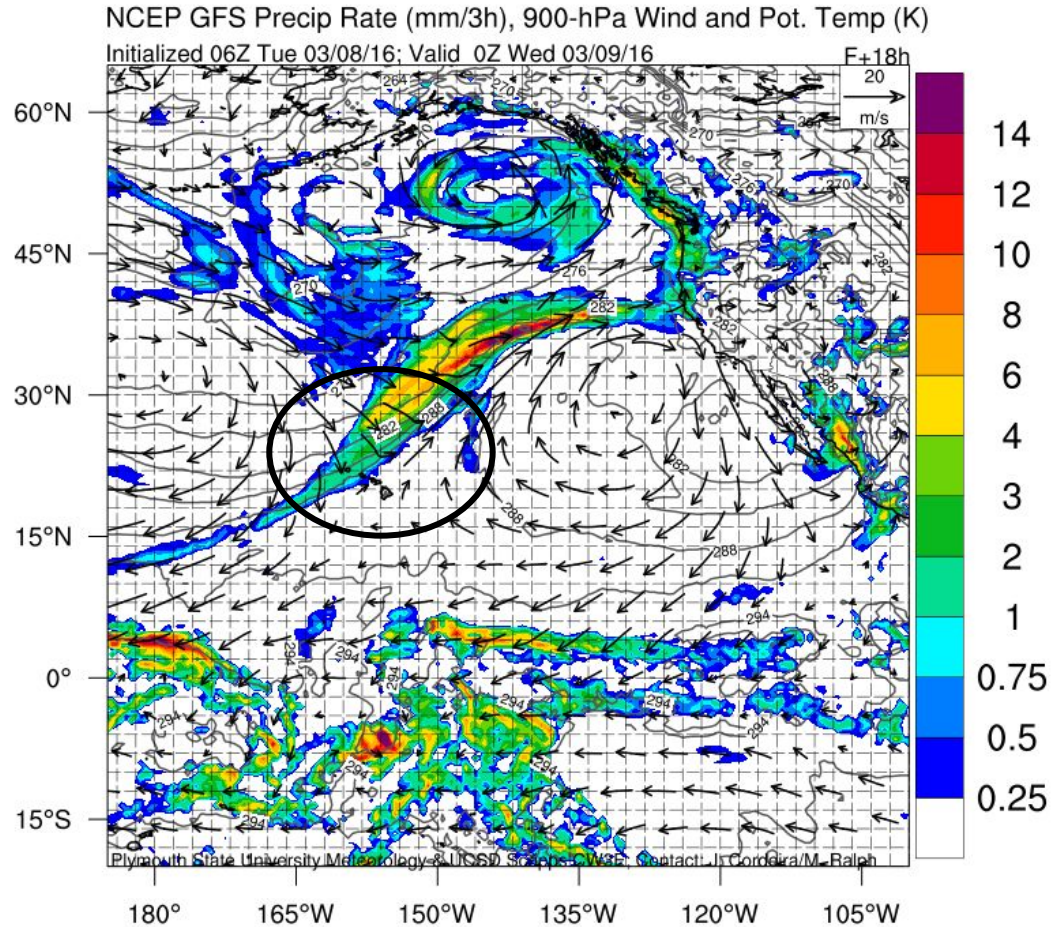
GFS 06Z I WV Forecast Valid 00Z THU



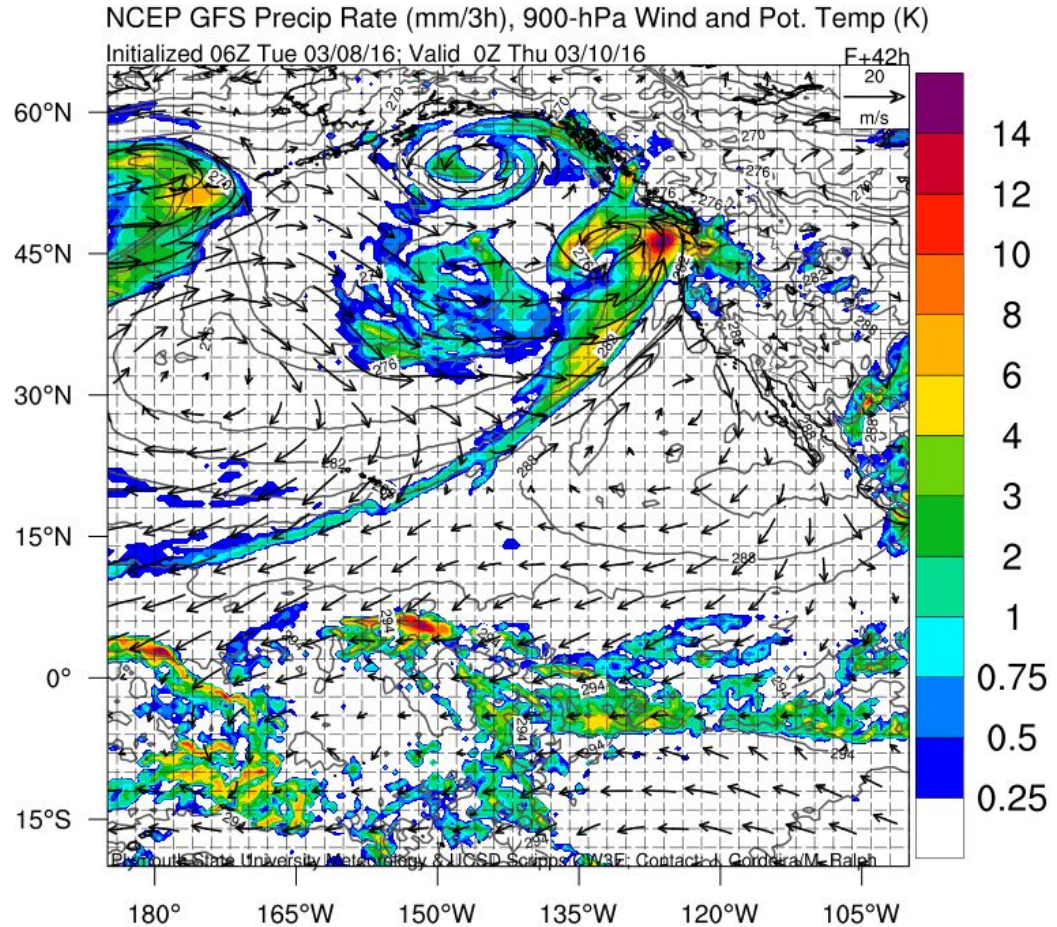
GFS 06Z IWV Forecast Valid 00Z FRI



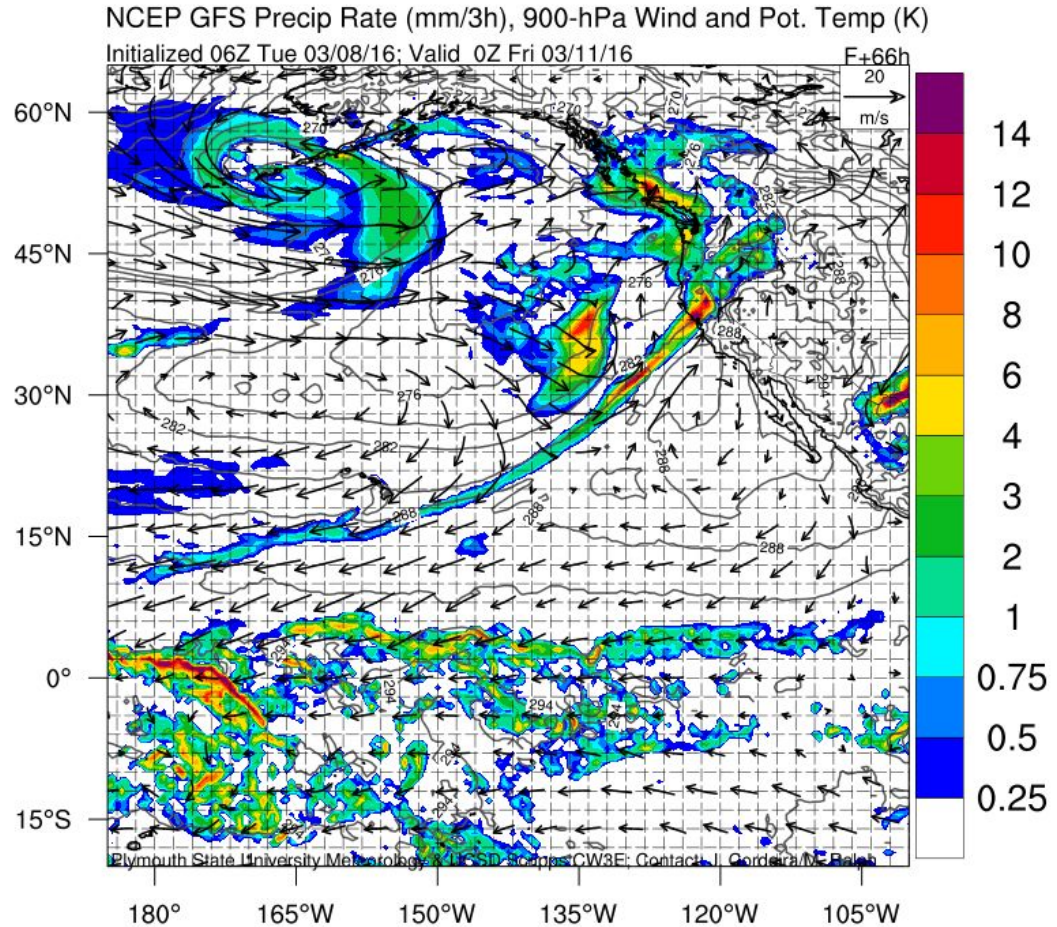
GFS 06Z Precip Forecast Valid 00Z WED



GFS 06Z Precip Forecast Valid 00Z THU



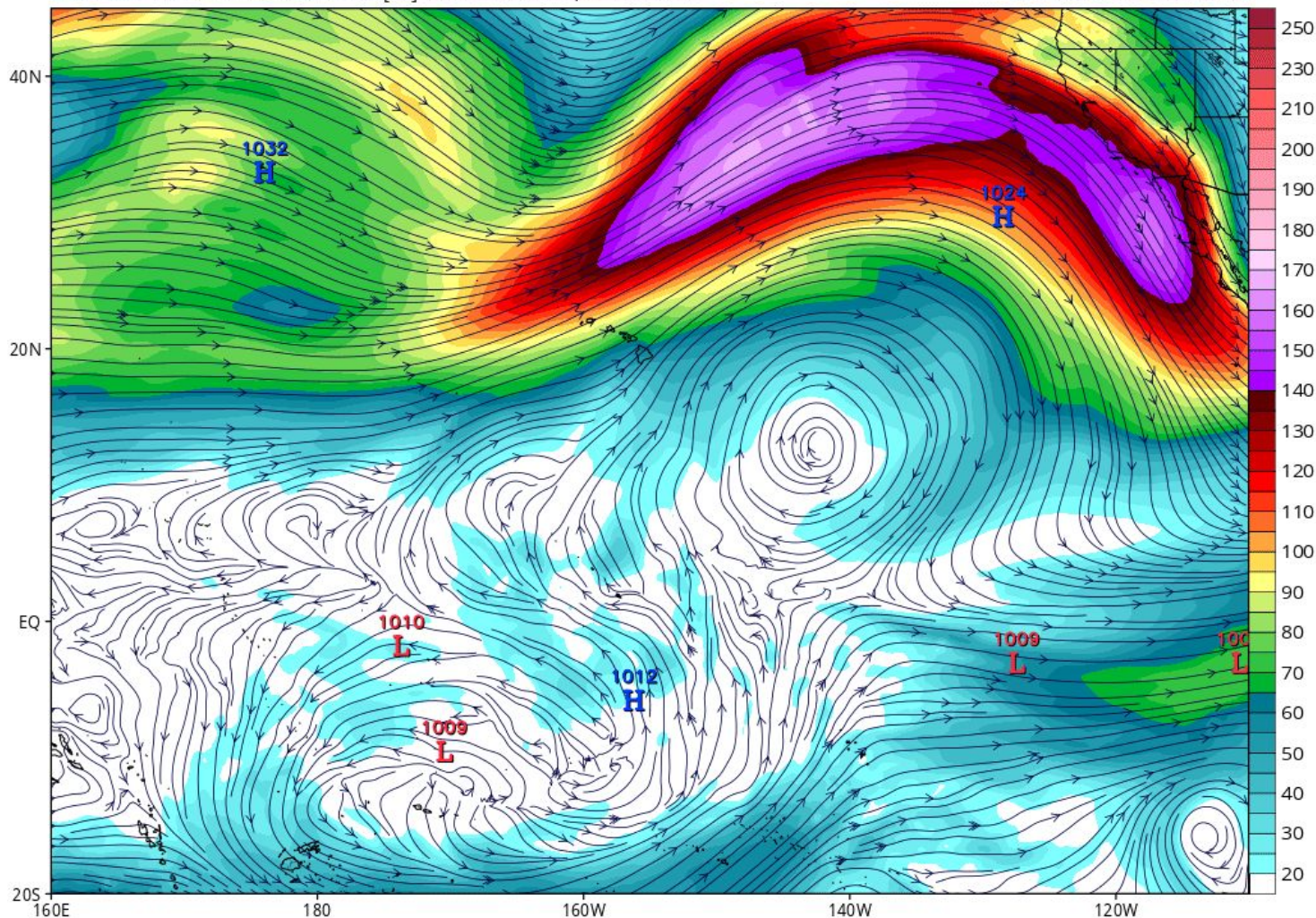
GFS 06Z Precip Forecast Valid 00Z FRI



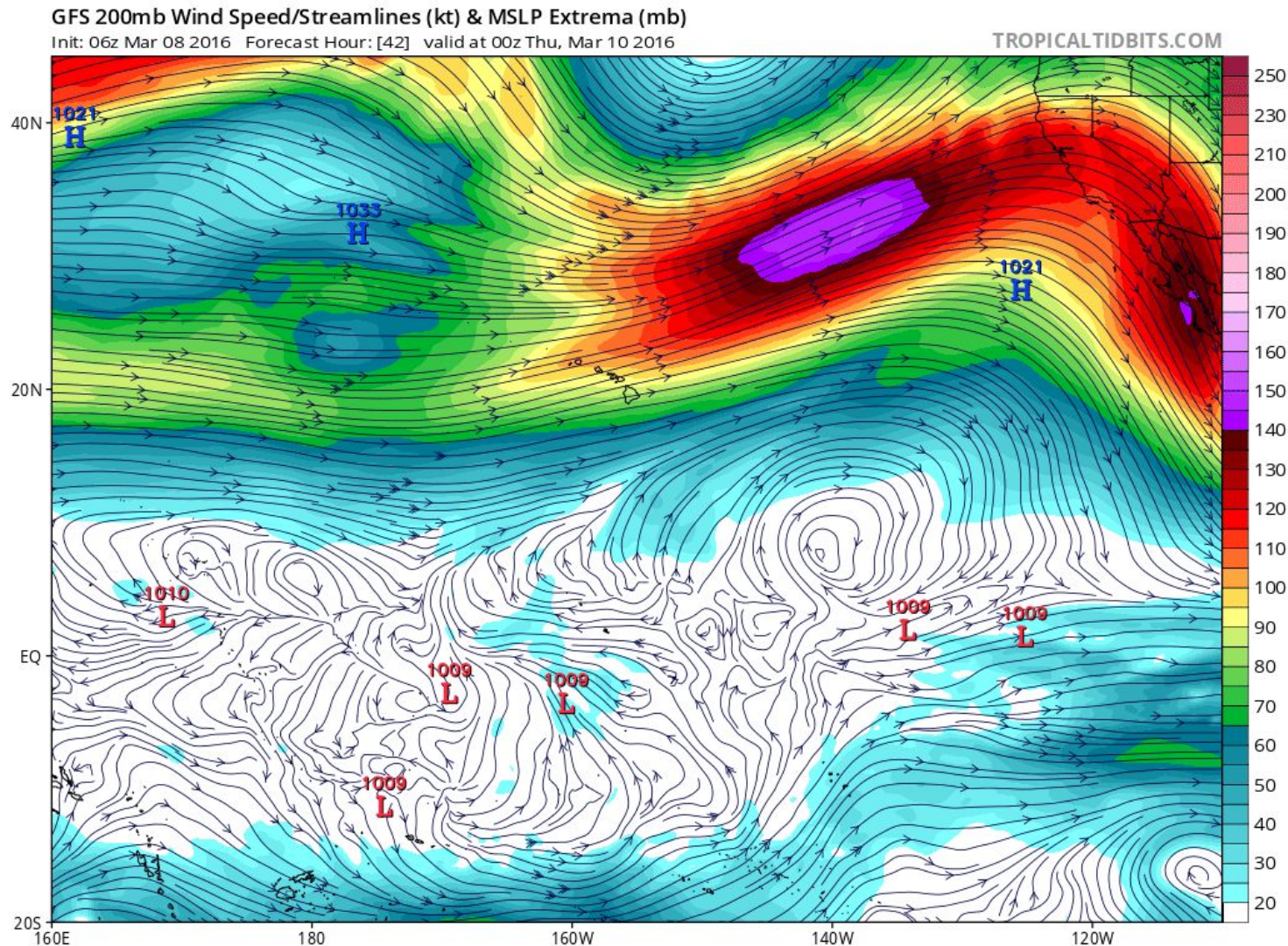
GFS 06Z 200 mb Forecast Valid 00Z WED

GFS 200mb Wind Speed/Streamlines (kt) & MSLP Extrema (mb)
Init: 06z Mar 08 2016 Forecast Hour: [18] valid at 00z Wed, Mar 09 2016

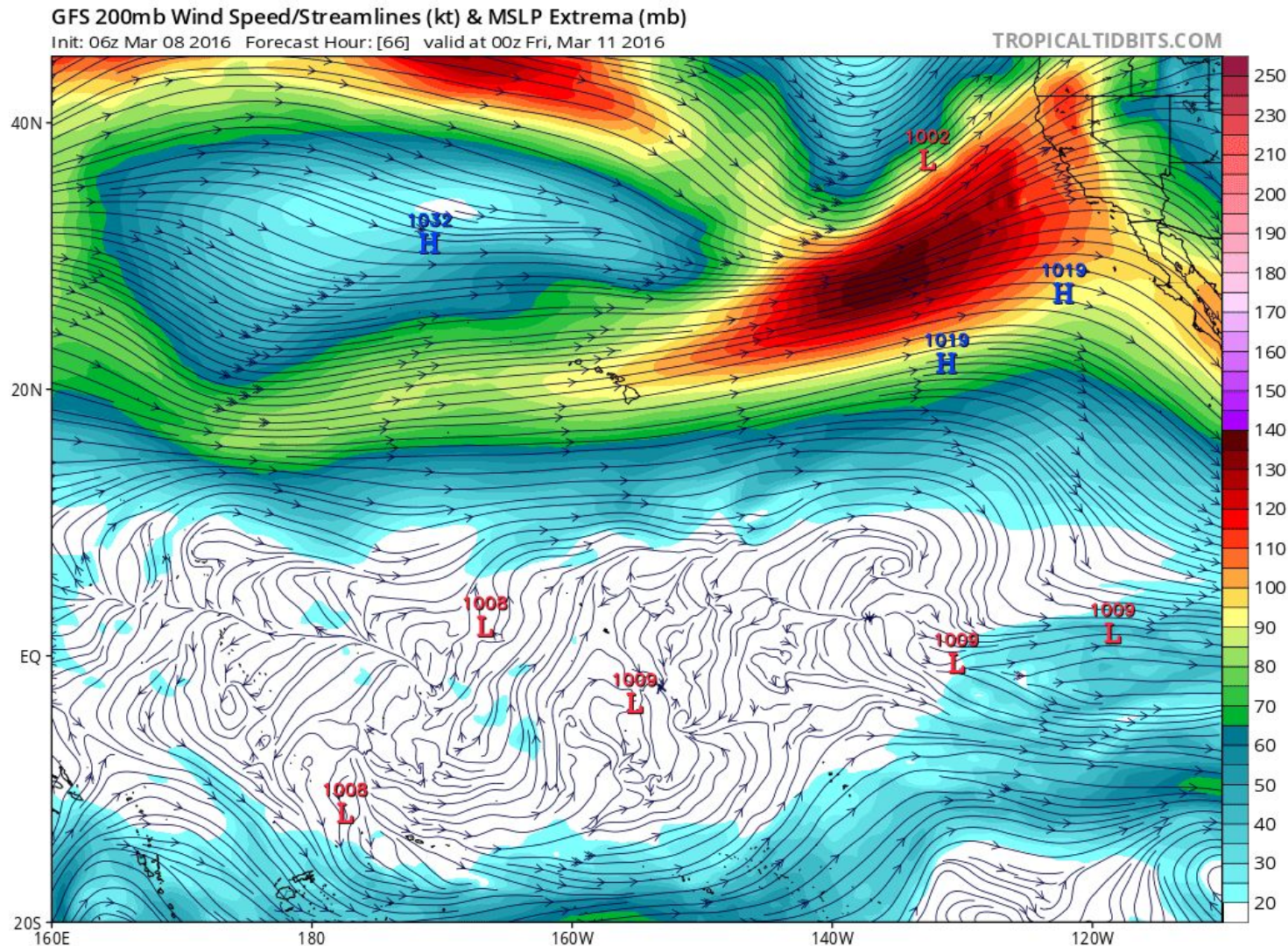
TROPICALTIDBITS.COM



GFS 06Z 200 mb Forecast Valid 00Z THU



GFS 06Z 200 mb Forecast Valid 00Z FRI

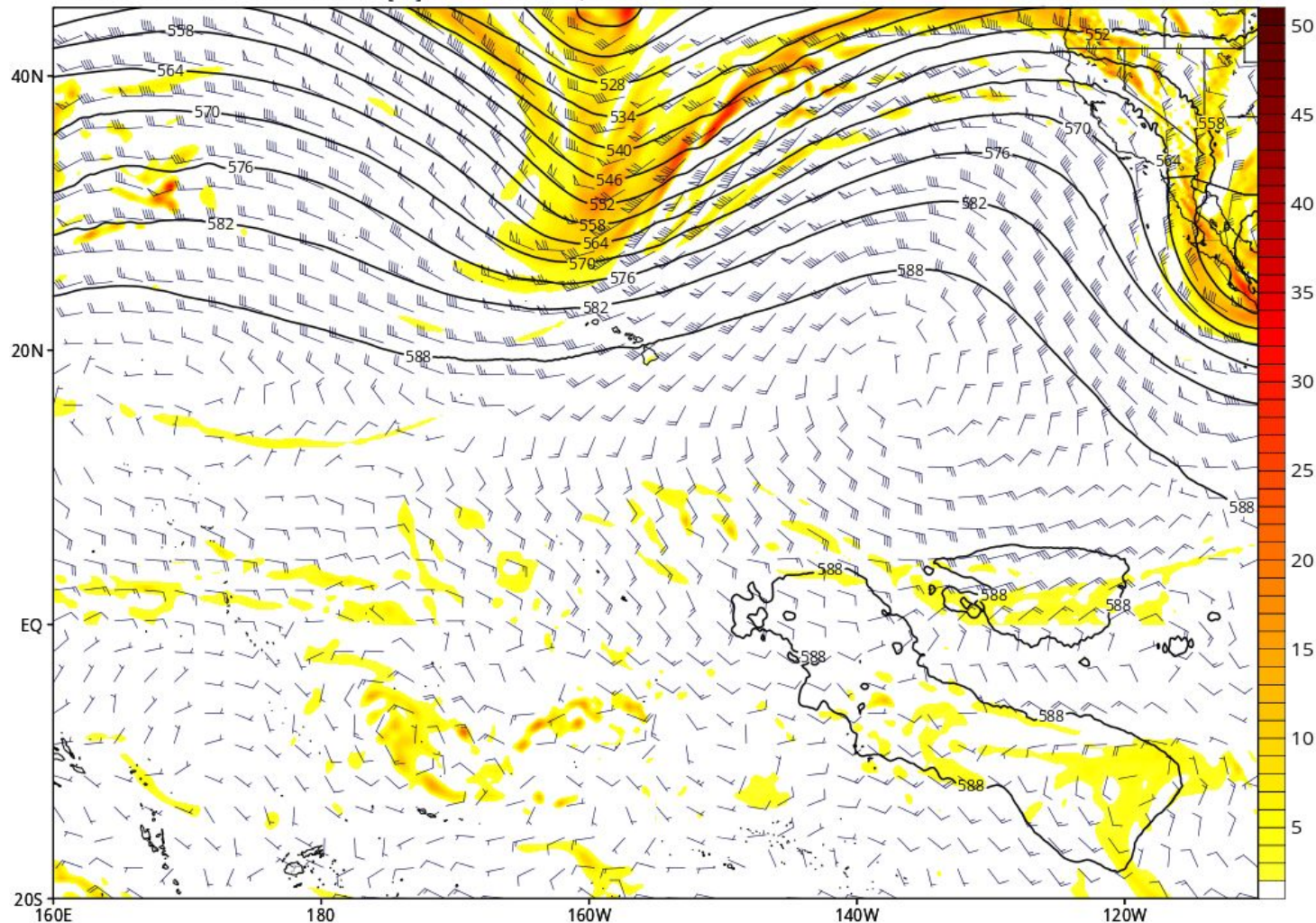


GFS 06Z 500 mb Forecast Valid 00Z WED

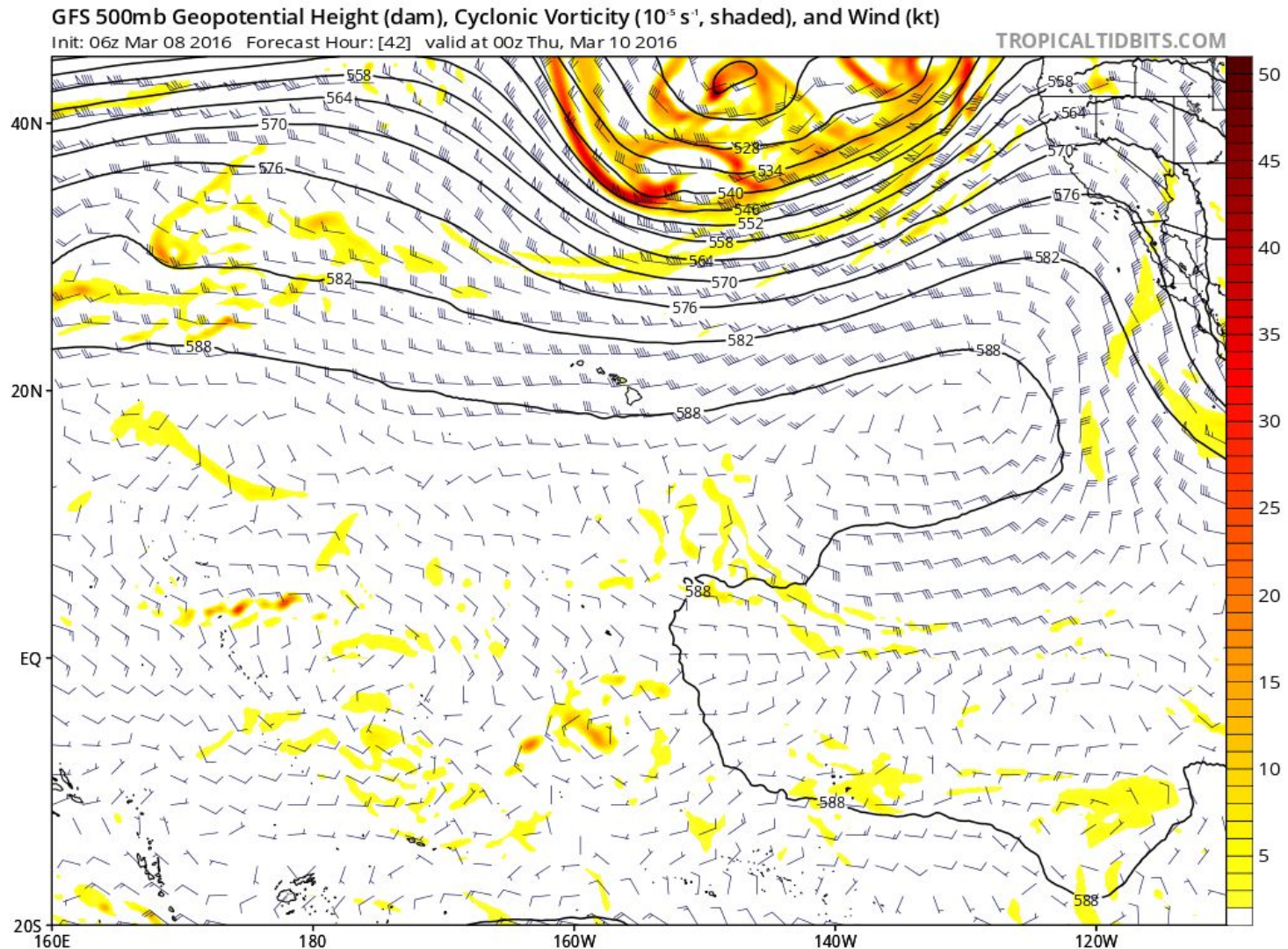
GFS 500mb Geopotential Height (dam), Cyclonic Vorticity (10^{-5} s^{-1} , shaded), and Wind (kt)

Init: 06z Mar 08 2016 Forecast Hour: [18] valid at 00z Wed, Mar 09 2016

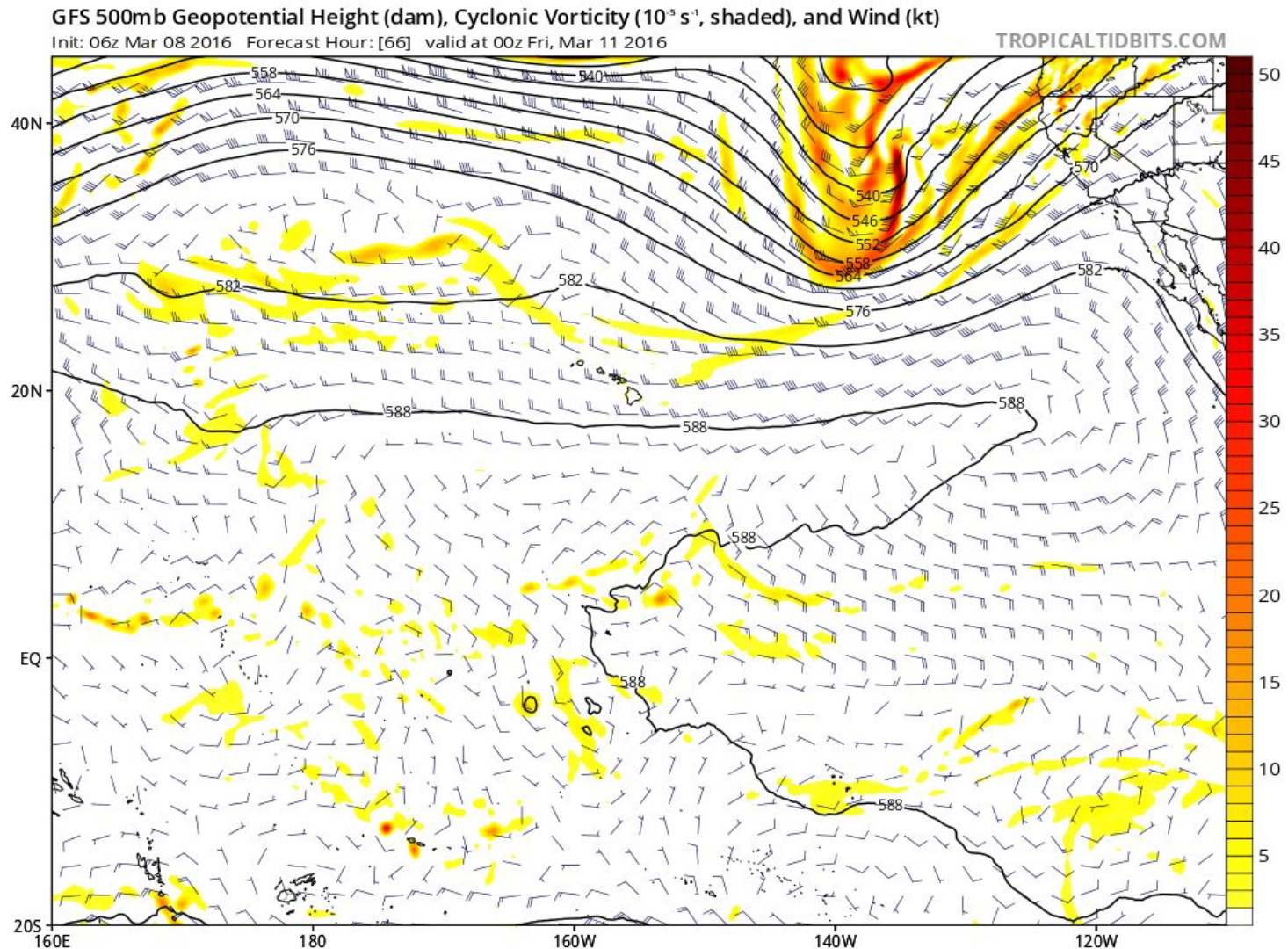
TROPICALTIDBITS.COM



GFS 06Z 500 mb Forecast Valid 00Z THU



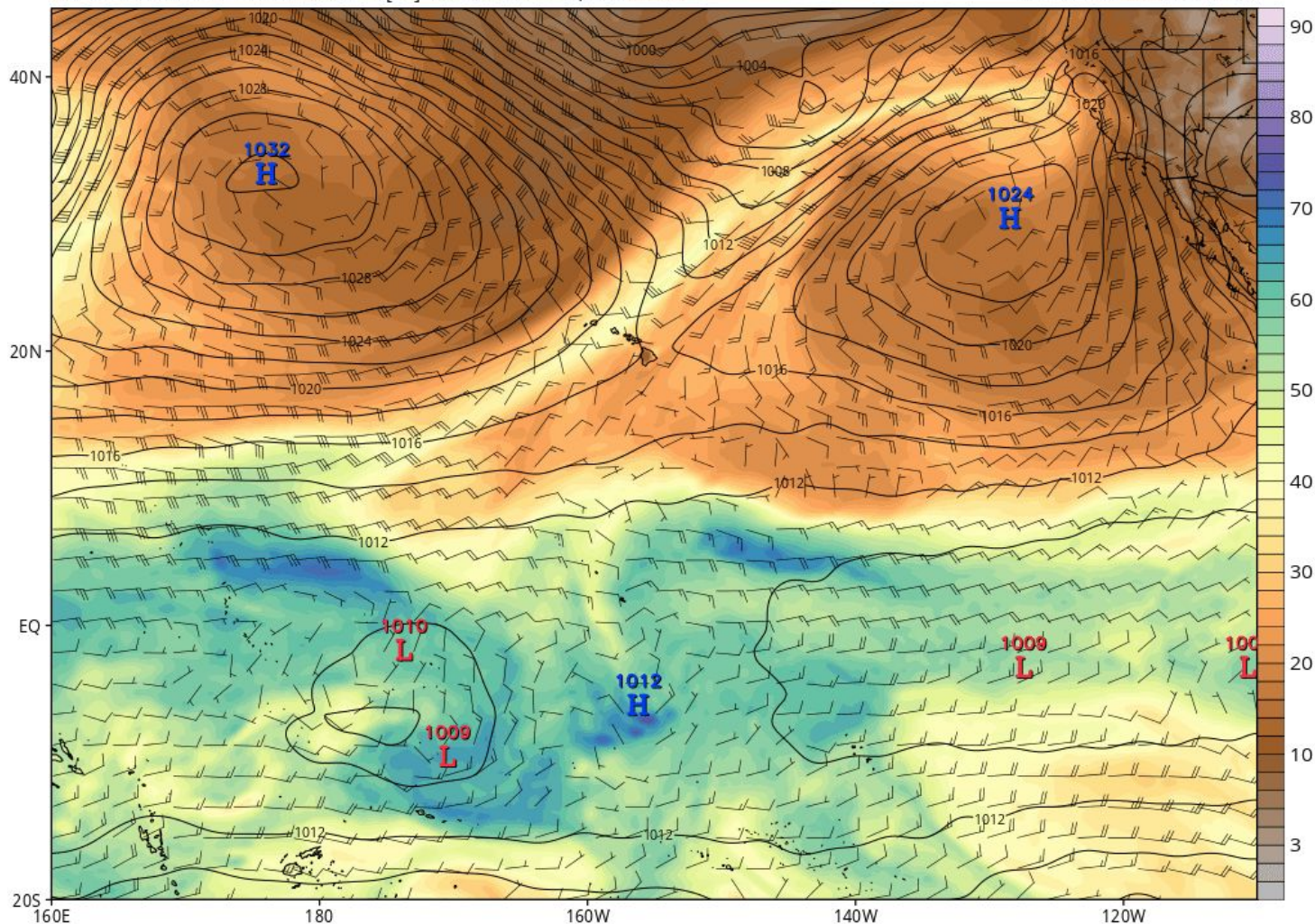
GFS 06Z 500 mb Forecast Valid 00Z FRI



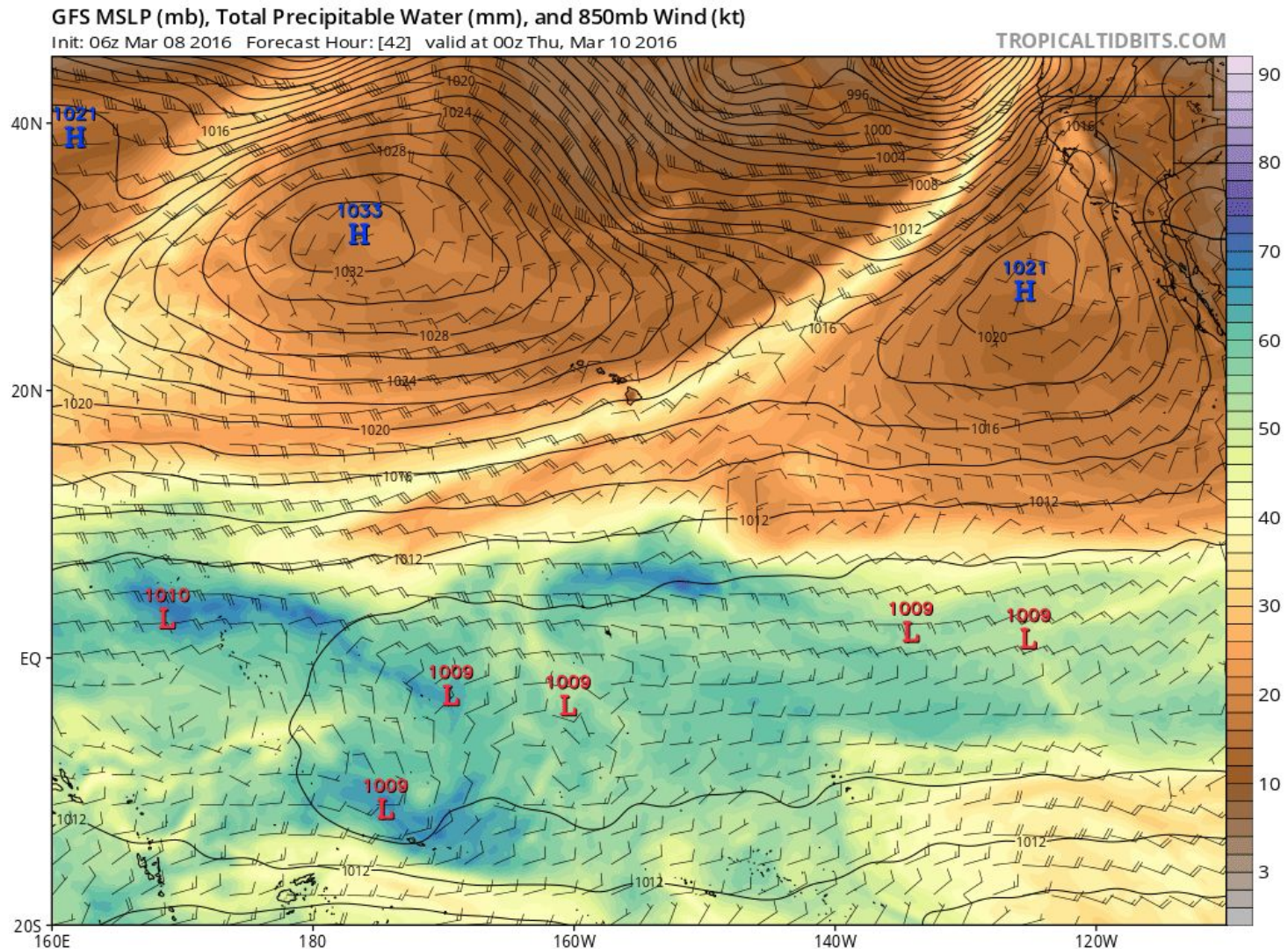
GFS 06Z PW Forecast Valid 00Z WED

GFS MSLP (mb), Total Precipitable Water (mm), and 850mb Wind (kt)
Init: 06z Mar 08 2016 Forecast Hour: [18] valid at 00z Wed, Mar 09 2016

TROPICALTIDBITS.COM



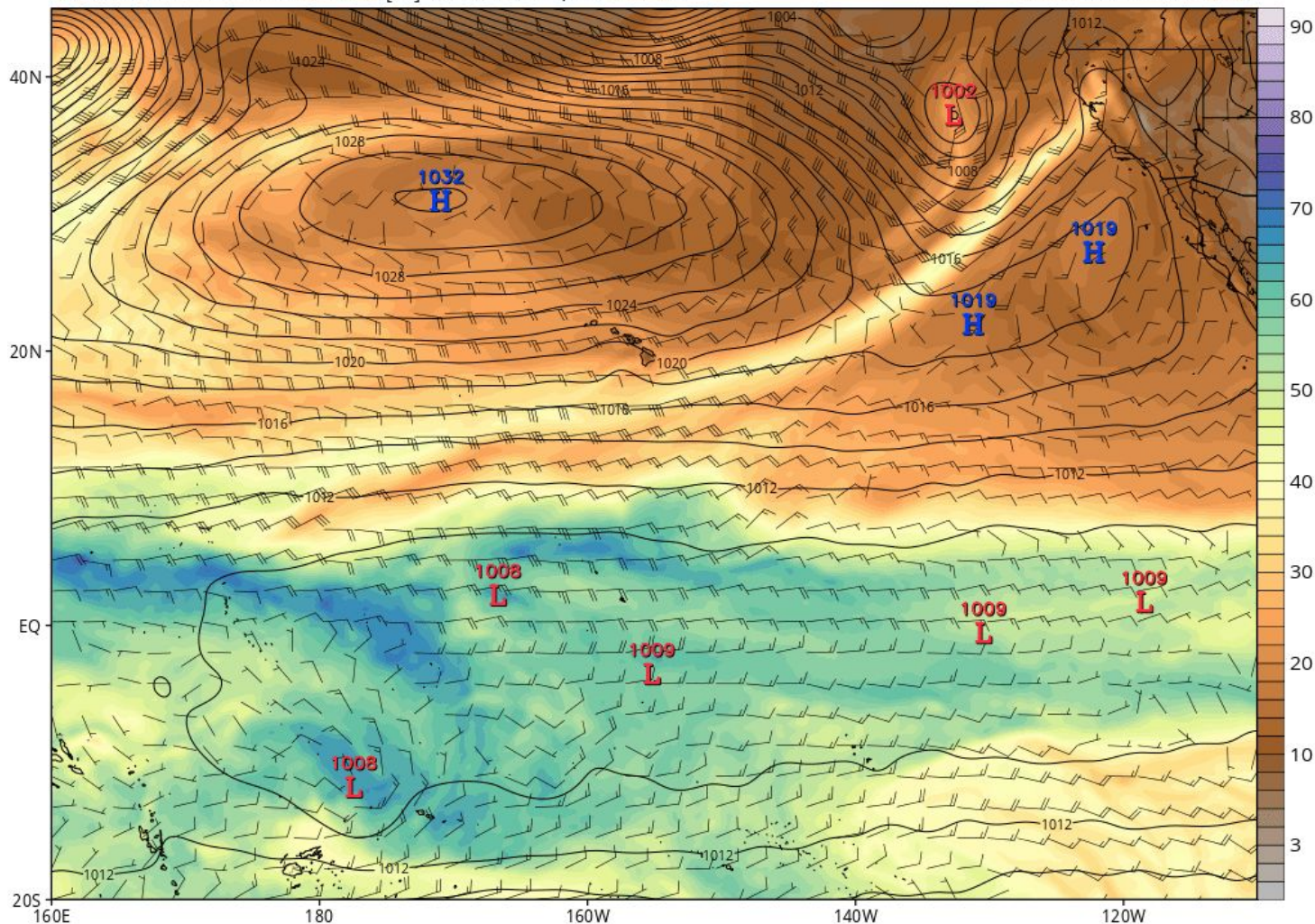
GFS 06Z PW Forecast Valid 00Z THU



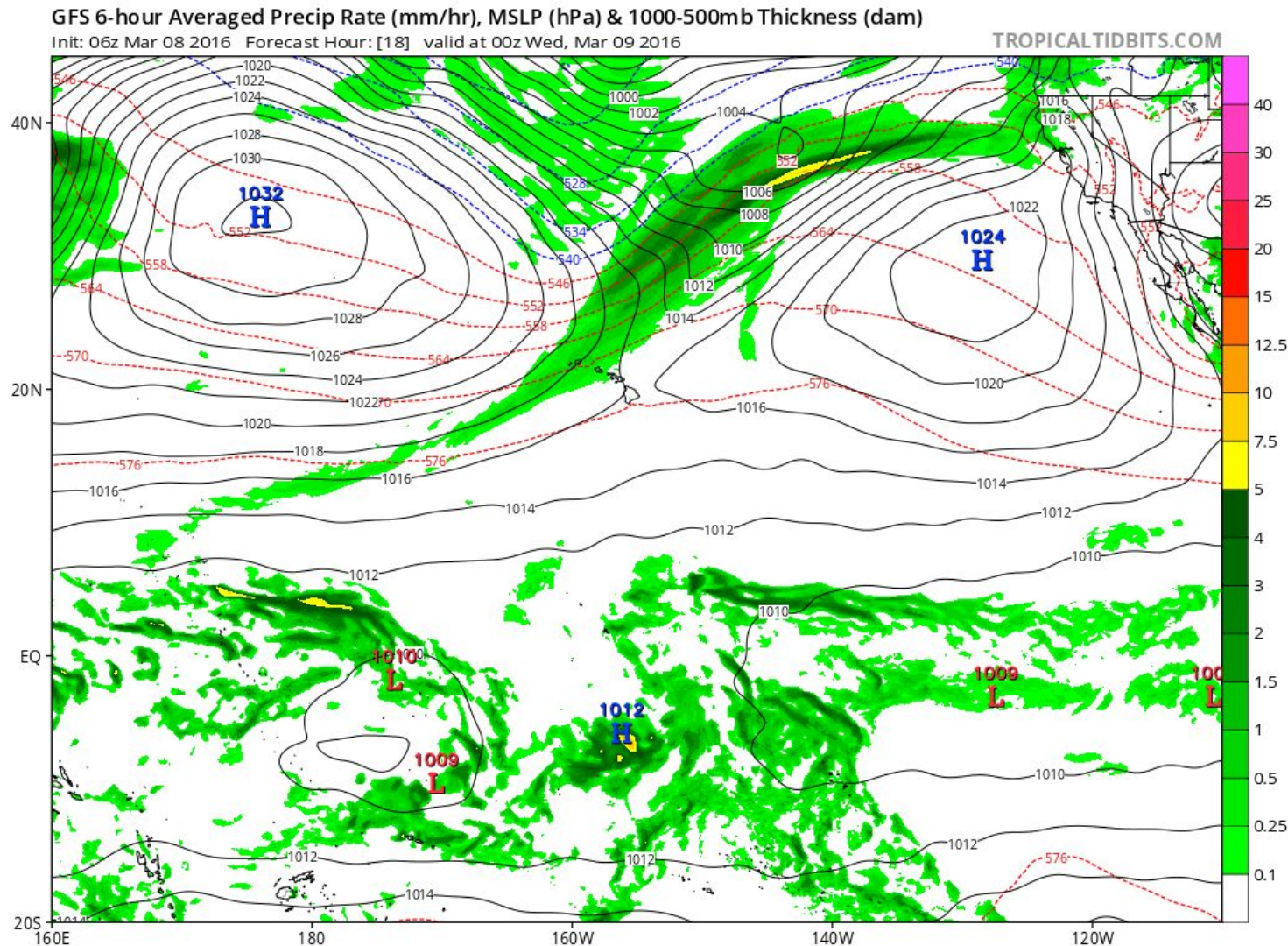
GFS 06Z PW Forecast Valid 00Z FRI

GFS MSLP (mb), Total Precipitable Water (mm), and 850mb Wind (kt)
Init: 06z Mar 08 2016 Forecast Hour: [66] valid at 00z Fri, Mar 11 2016

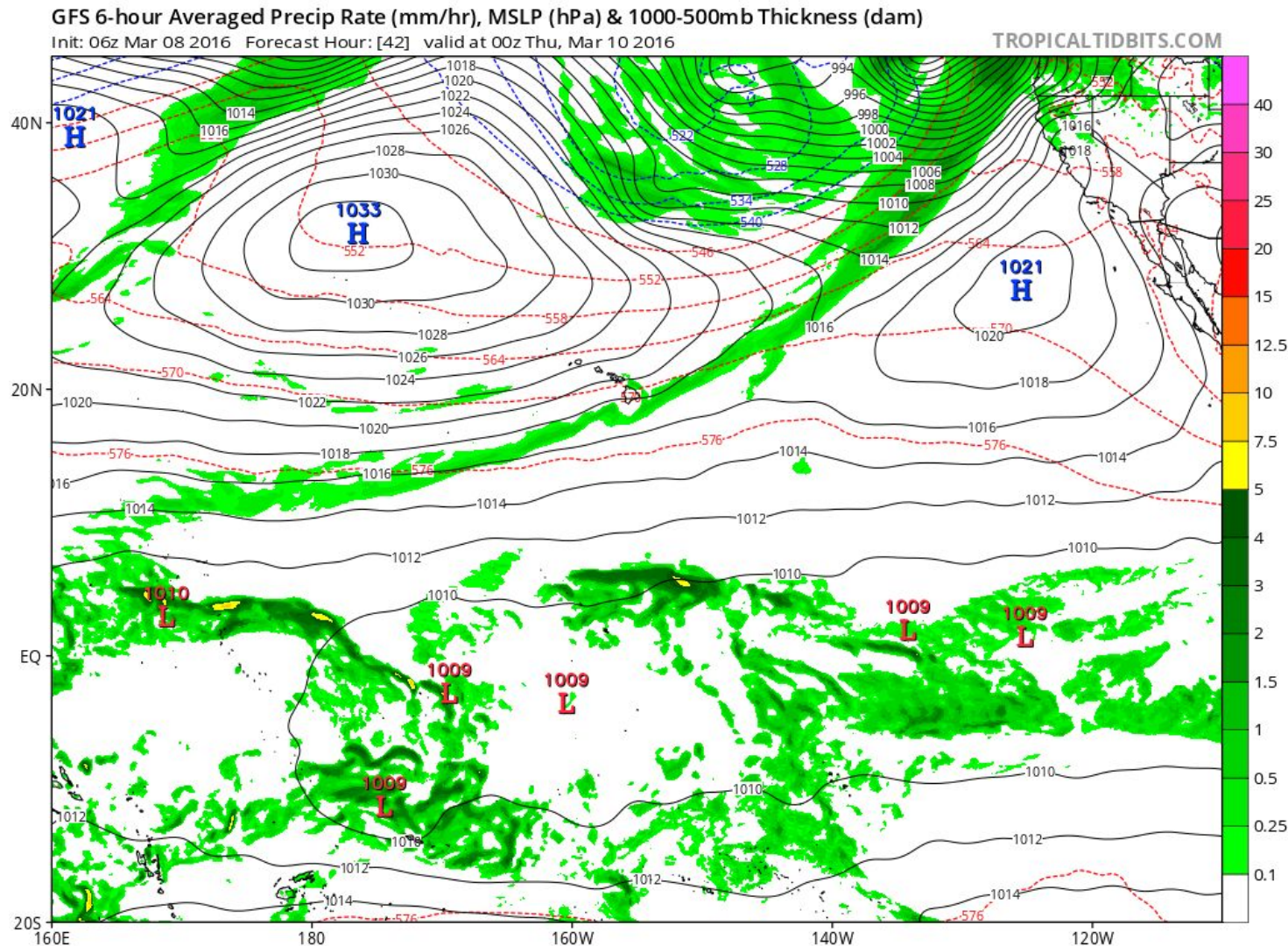
TROPICALTIDBITS.COM



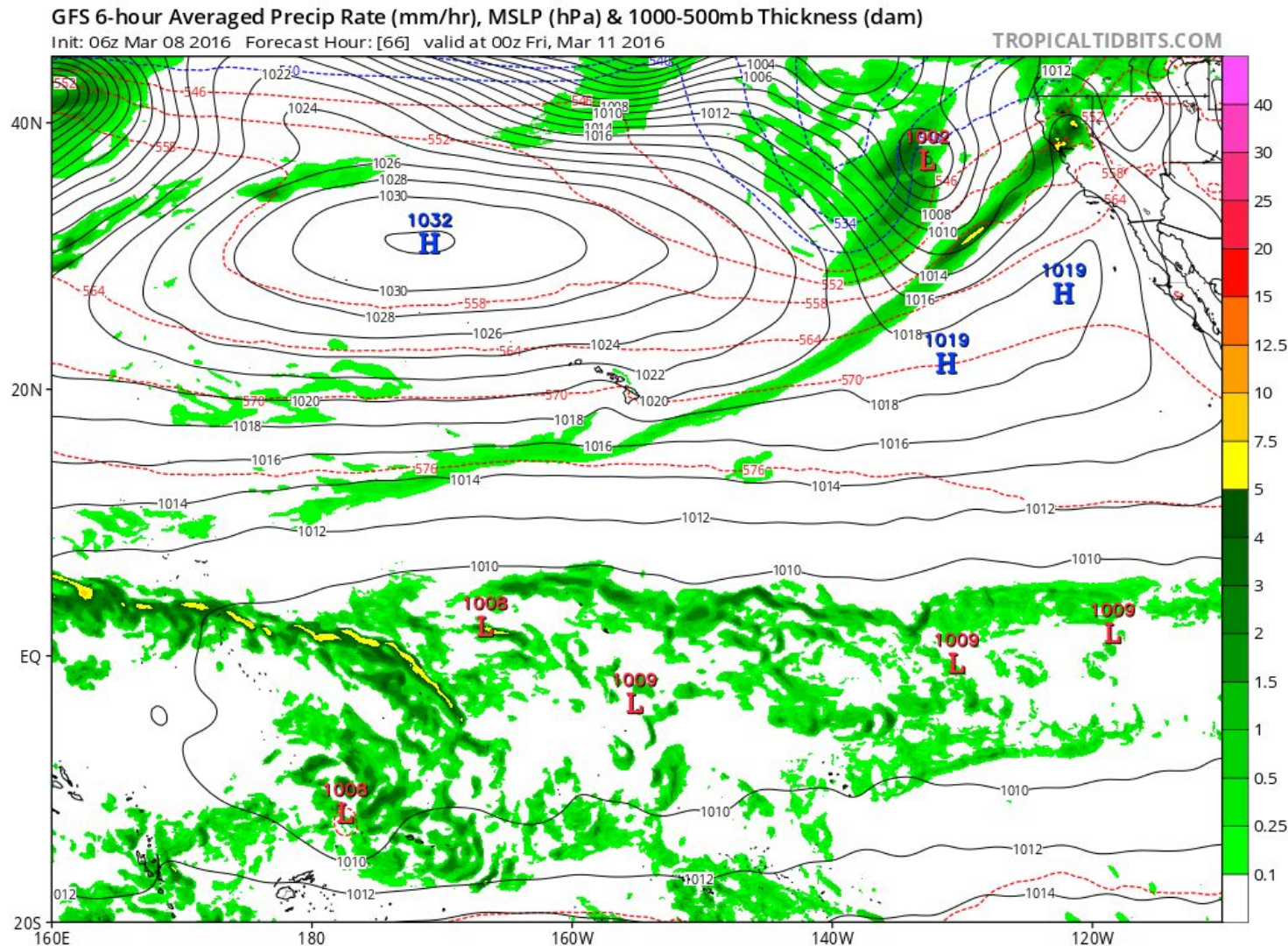
GFS 06Z Precip Forecast Valid 00Z WED



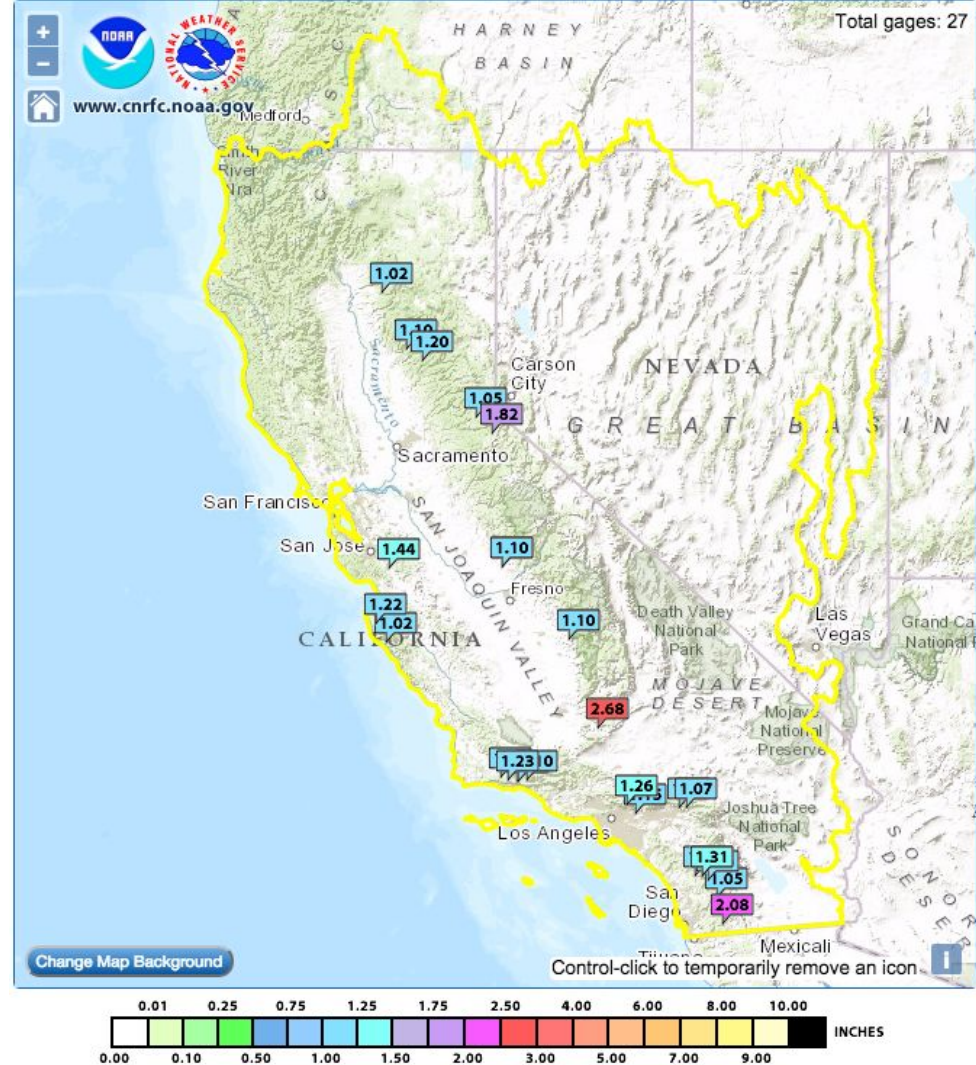
GFS 06Z Precip Forecast Valid 00Z THU



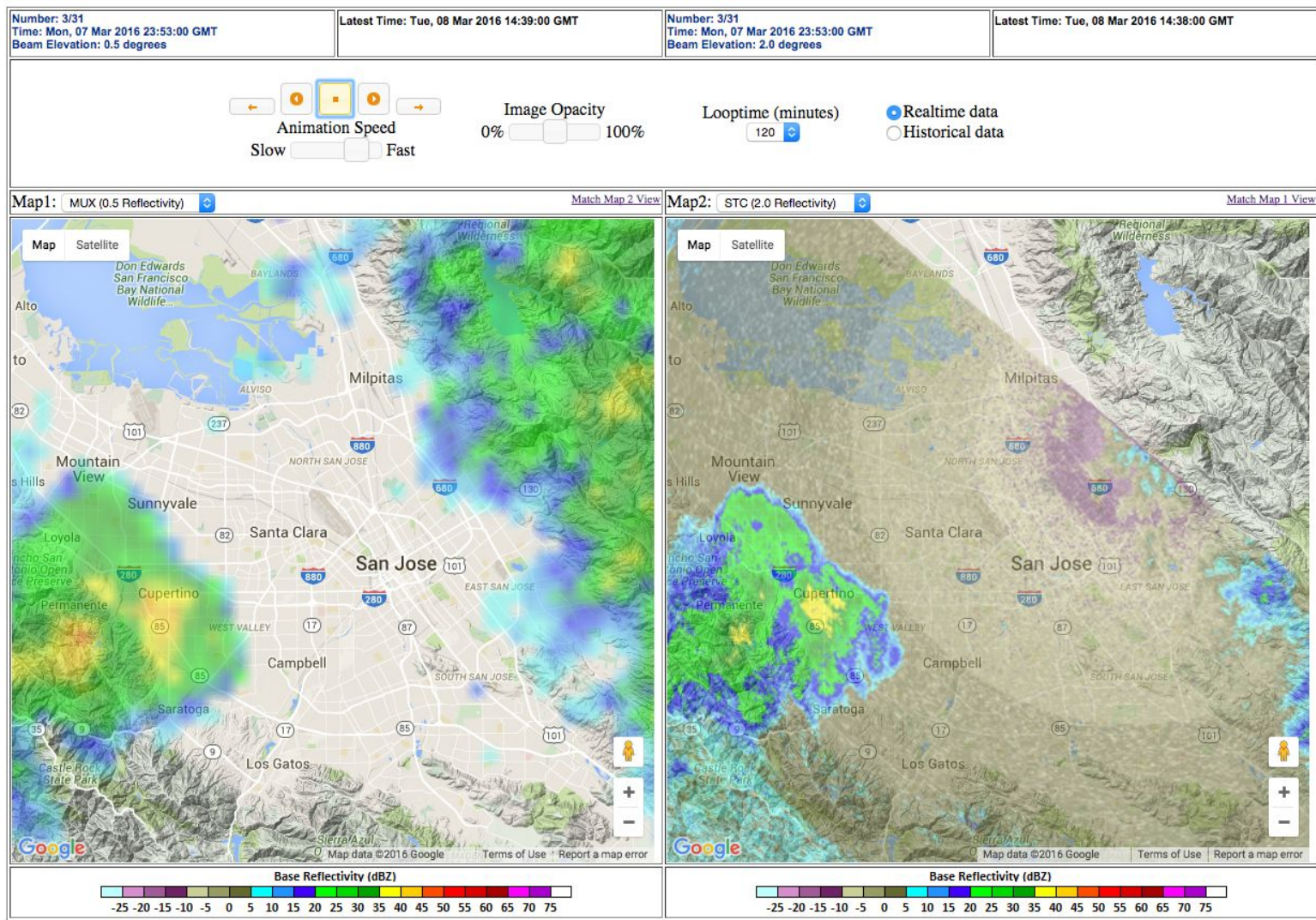
GFS 06Z Precip Forecast Valid 00Z FRI



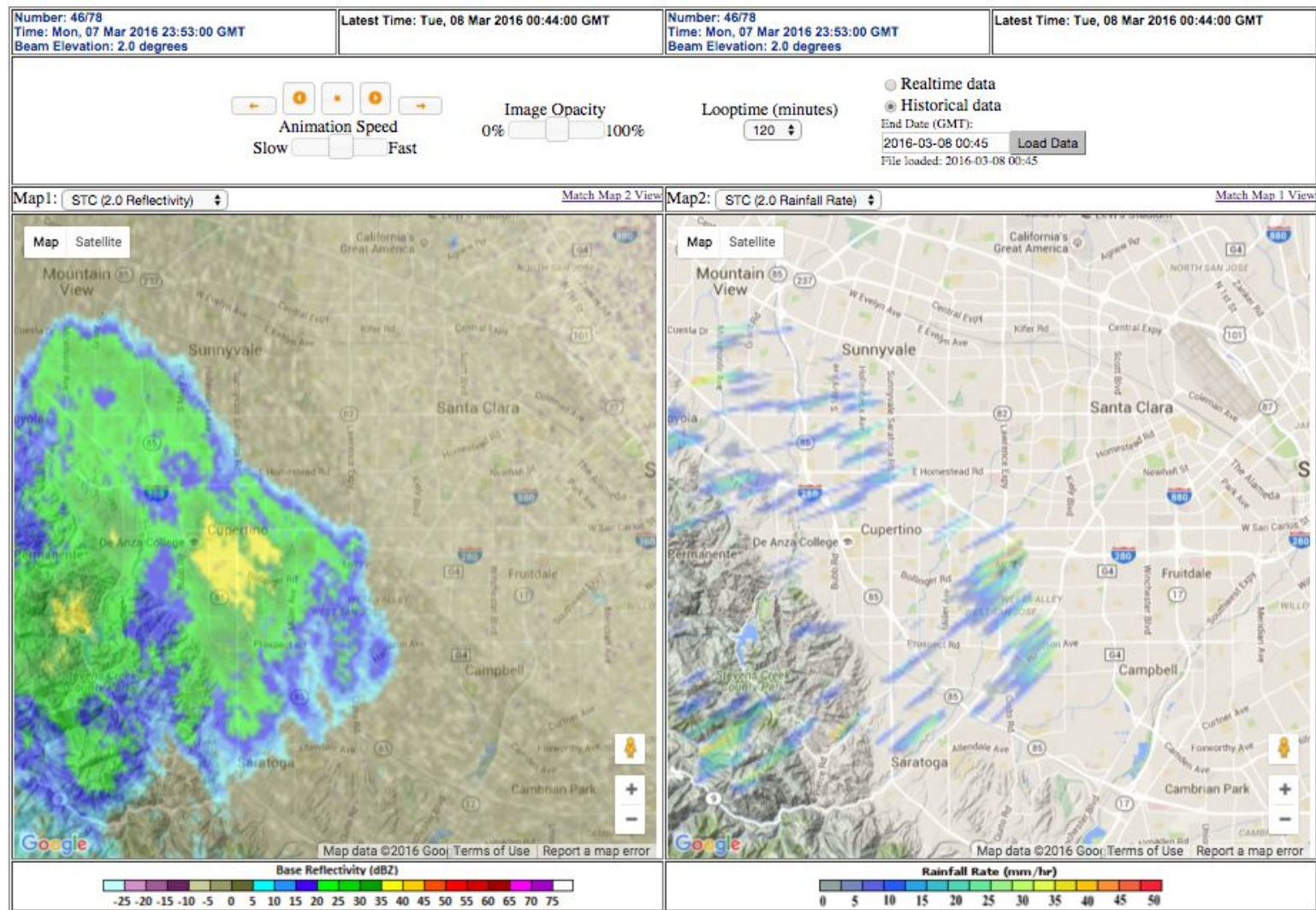
CNRFC 24 HR QPE (> 1")



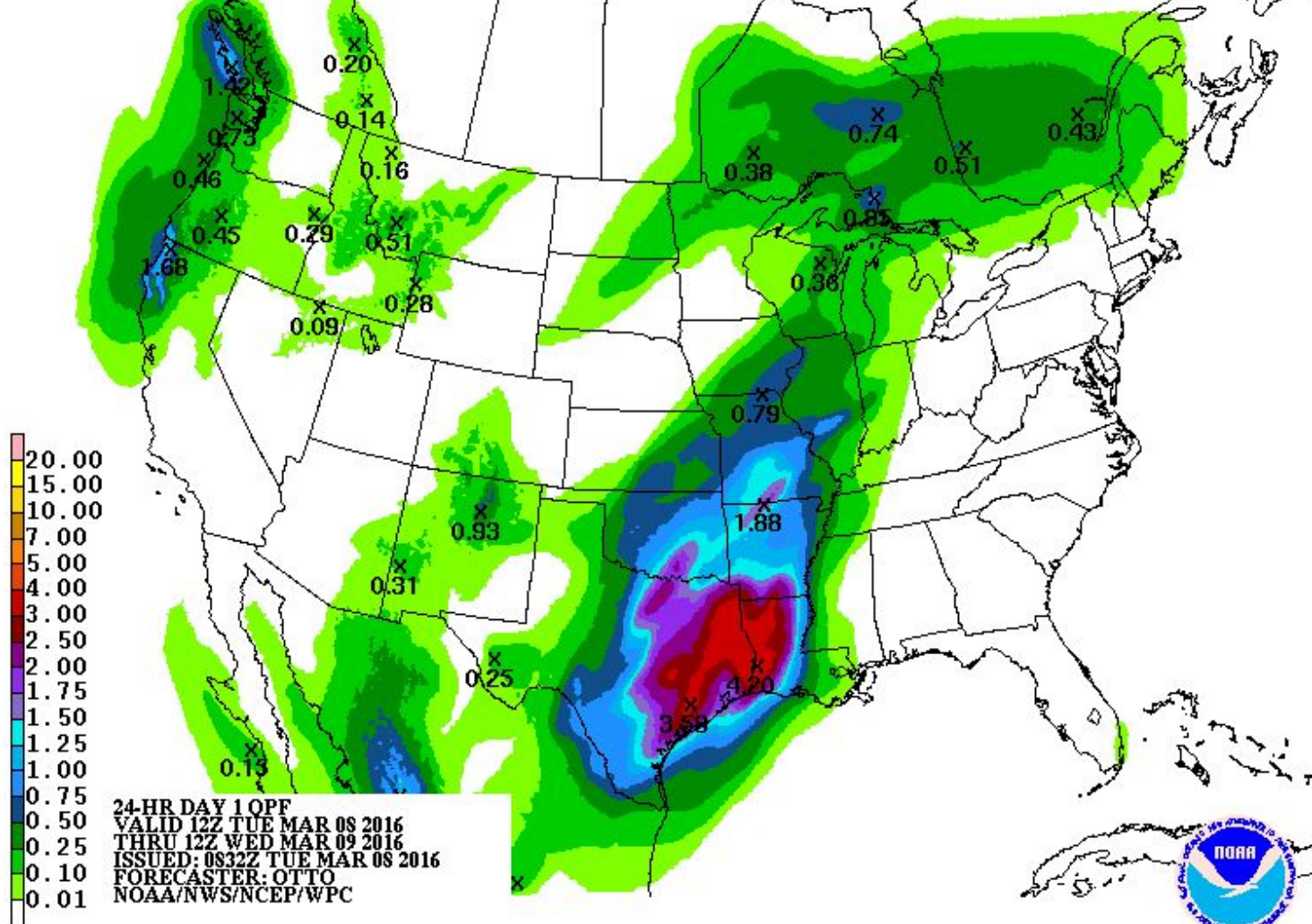
KMUX vs Santa Clara



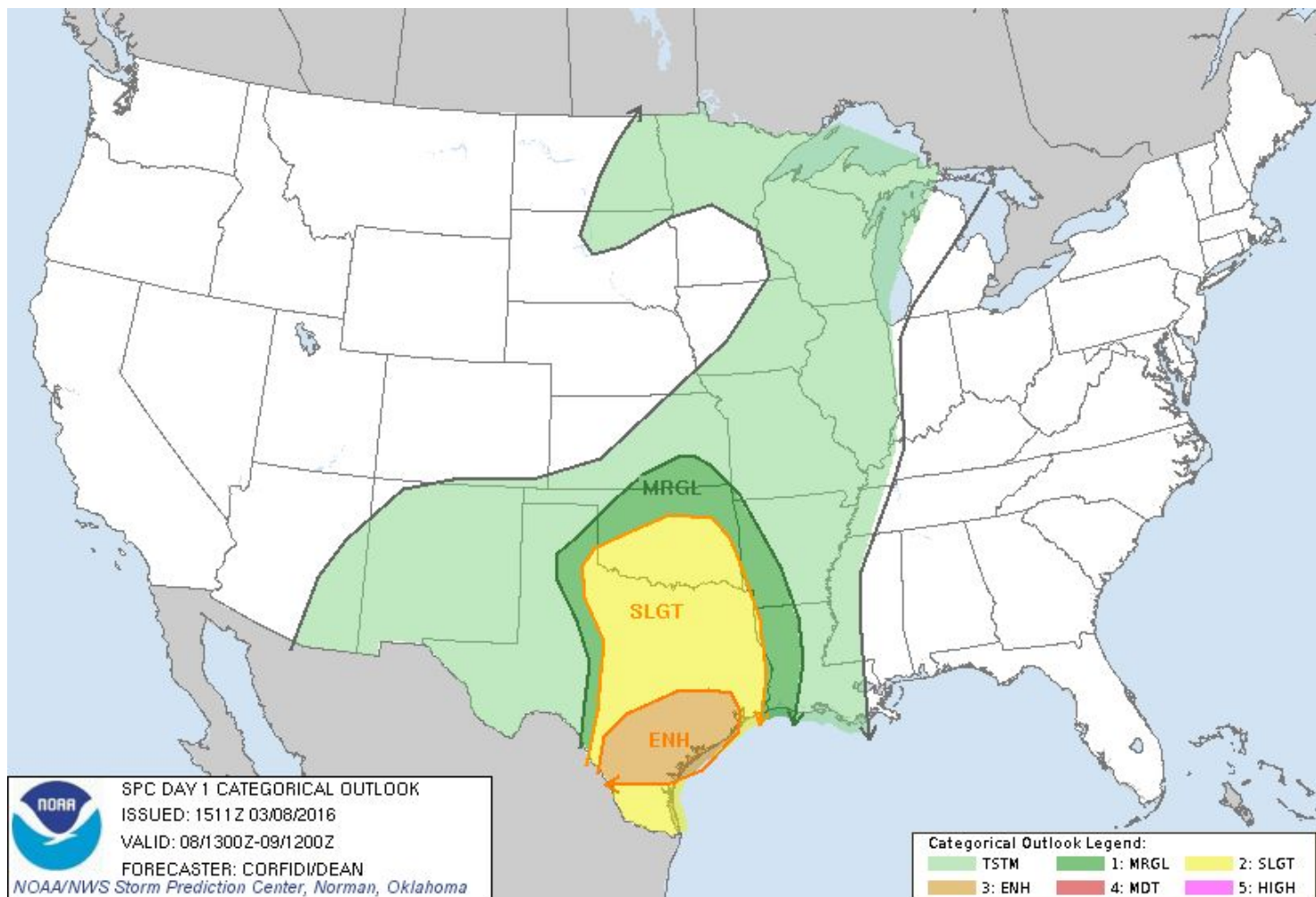
Santa Clara Radar



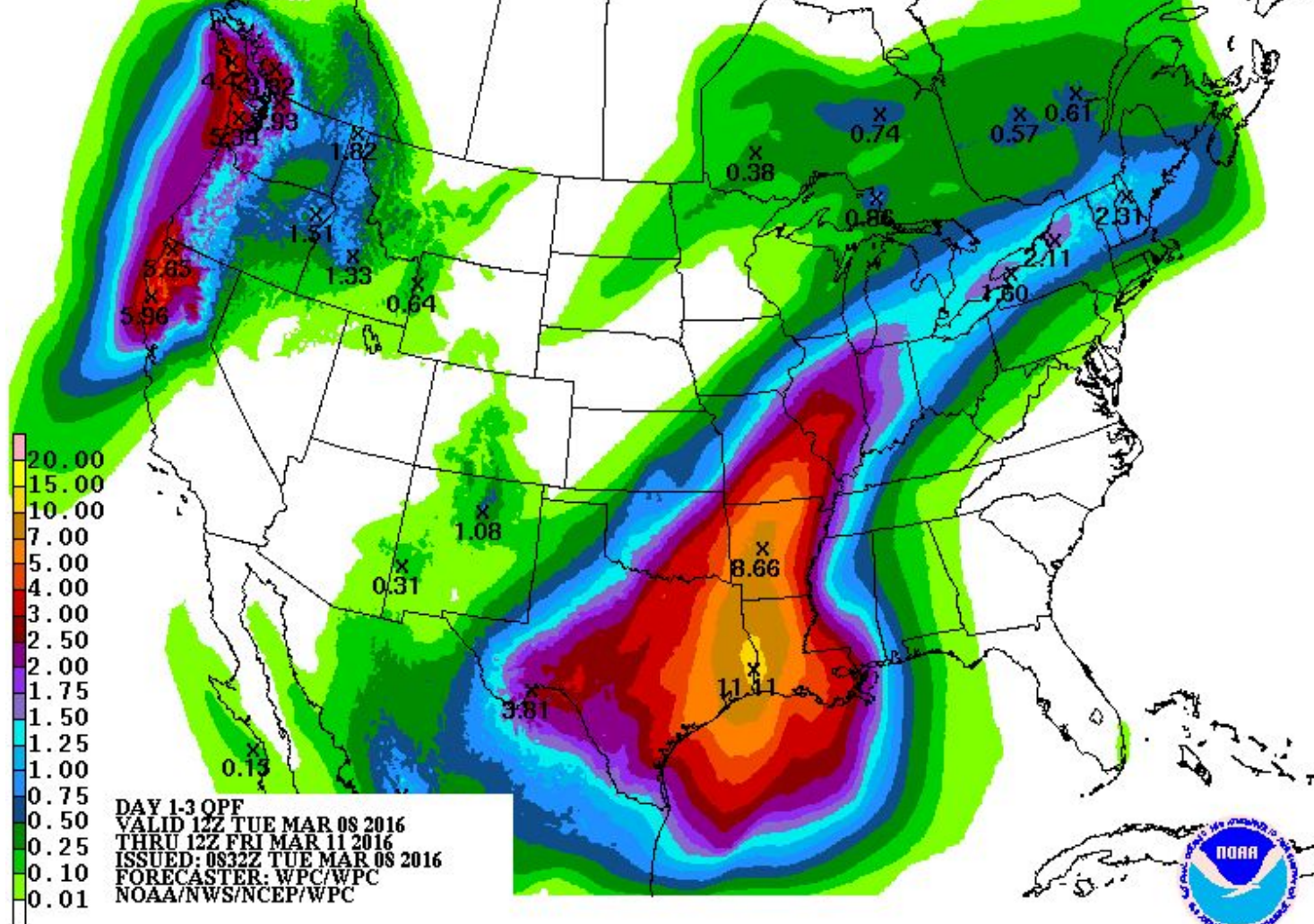
WPC: 1 Day Total QPF



SPC: Day 1 Convective Outlook



WPC: 3 Day Total QPF



SREF Total QPF: SFO

NCEP SREF Plume for Total-QPF at SFO from 20160308/09 UTC run.

Change date: 20160308 and select runtime: 03 09 15 21 then click parameter buttons & map to display forecasts.

Observed TEMP, DEWP, RHUM, & WIND plotted near WFO sites only.

Parameter Selection - Hover over button for more information on that parameter. Beta plumes with violin dProg/dt charts.

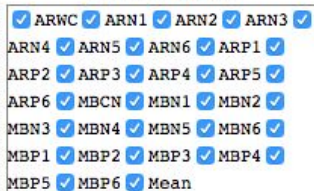
3hrly-TMP 3hrly-DWP 3h-MUCAPE 3h-MLCAPE 3h-EFFSHR 3hrly-QPF Total-QPF 3hrly-SNO Total-SNO Ptype-POP 3hr-2mRH% 3h-10mWIND

NOAA / National Weather Service / Storm Prediction Center Plume Viewer Ver. 2.0

Members Displayed



Select Members

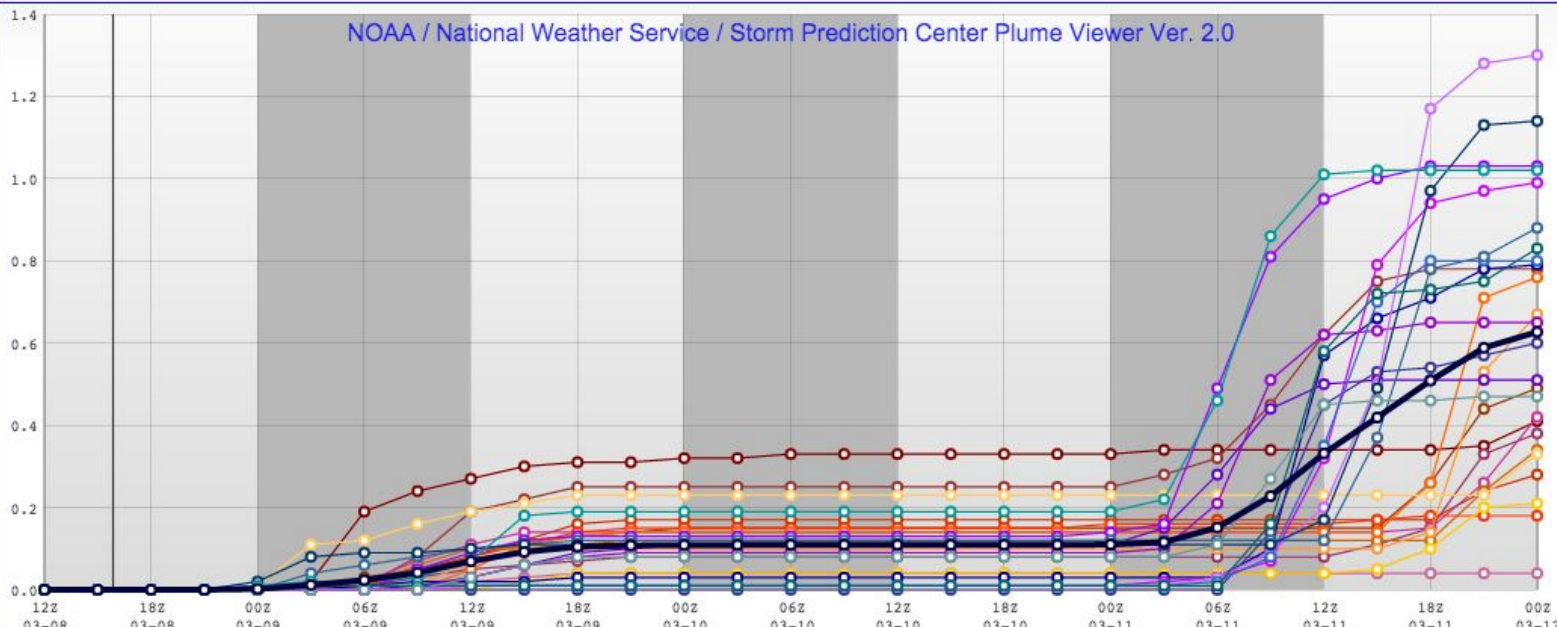


Select Model Cores

All ARW NMB

dProg/dt (Means of last 4 runs)

[Help/Credits](#) | [SREF Info](#)
[SREF Loops](#) | [SPC](#) | [Feedback](#)



Min(y) Max(y) Set Clear

SREF Total QPF: SAC

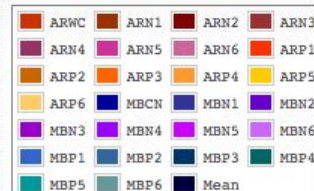
NCEP SREF Plume for Total-QPF at SAC from 20160308/09 UTC run.
Change date: 20160308 and select runtime: 03 09 15 21 then click parameter buttons & map to display forecasts.
Observed TEMP, DEWP, RHUM, & WIND plotted near WFO sites only.

Parameter Selection - Hover over button for more information on that parameter. Beta plumes with violin dProg/dt charts.

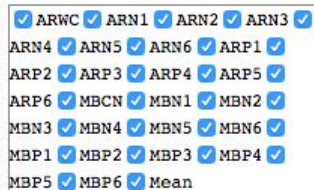
3hrly-TMP 3hrly-DWP 3h-MUCAPE 3h-MLCAPE 3h-EFFSHR 3hrly-QPF Total-QPF 3hrly-SNO Total-SNO Ptype-POP 3hr-2mRH% 3h-10mWIND

NOAA / National Weather Service / Storm Prediction Center Plume Viewer Ver. 2.0

Members Displayed



Select Members

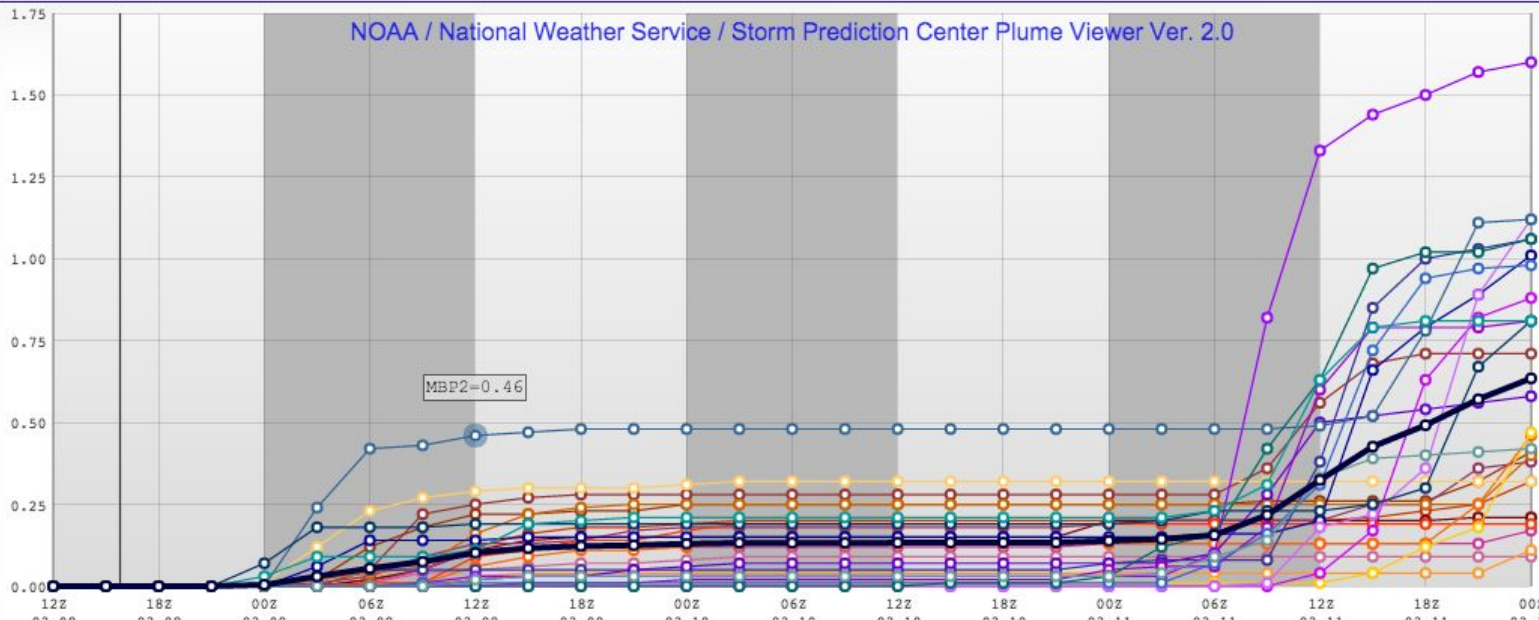


Select Model Cores

All ARW NMB

dProg/dt (Means of last 4 runs)

[Help/Credits](#) | [SREF Info](#)
[SREF Loops](#) | [SPC](#) | [Feedback](#)



Min(y) Max(y) Set Clear