

Summary of Key Briefing Points
11:00-12:00 MST Wed, Mar 9, 2016

Current Conditions as of Thu 12Z-15Z Mar 4

Tropics and Mid-latitudes

Over the Tropical Pacific:

- Active along “filament” extending around western portion of anticyclone - north to HI
- Most other activity in Tropics is west and south of Dateline
- PW maximum extending to ~10N near Dateline

Tropical Outlook

- Main convection forecast to be near Dateline and east of ~160W - north of Equator
- Reemergence of SPCZ over next few days?

Midlatitude Conditions/Outlook

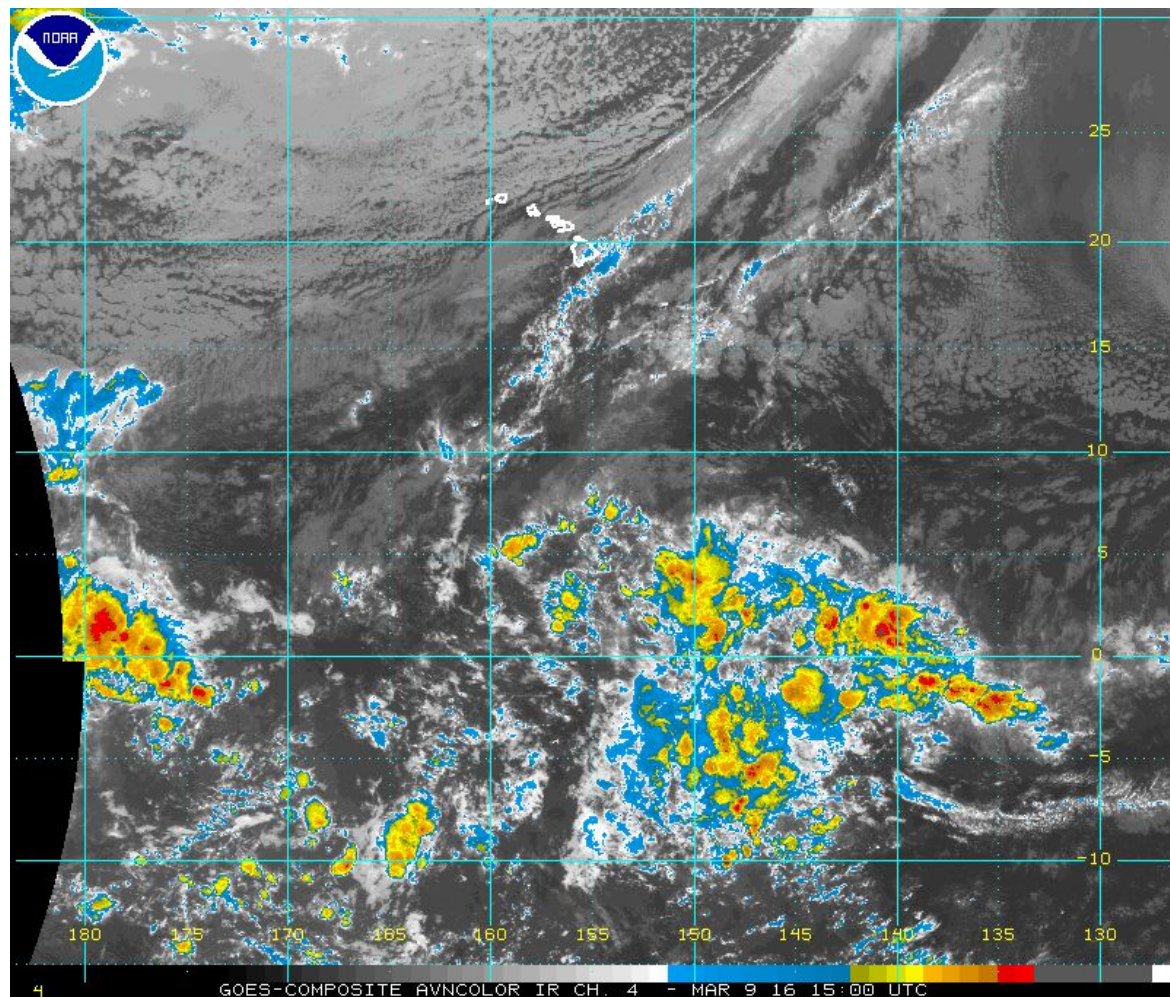
Short Term:

- Front approaching HI this morning but moisture flux is not connected to Tropical plume
- Accompanying wave to impact N. California on Friday
- Lower MI valley to receive copious rain over next few days

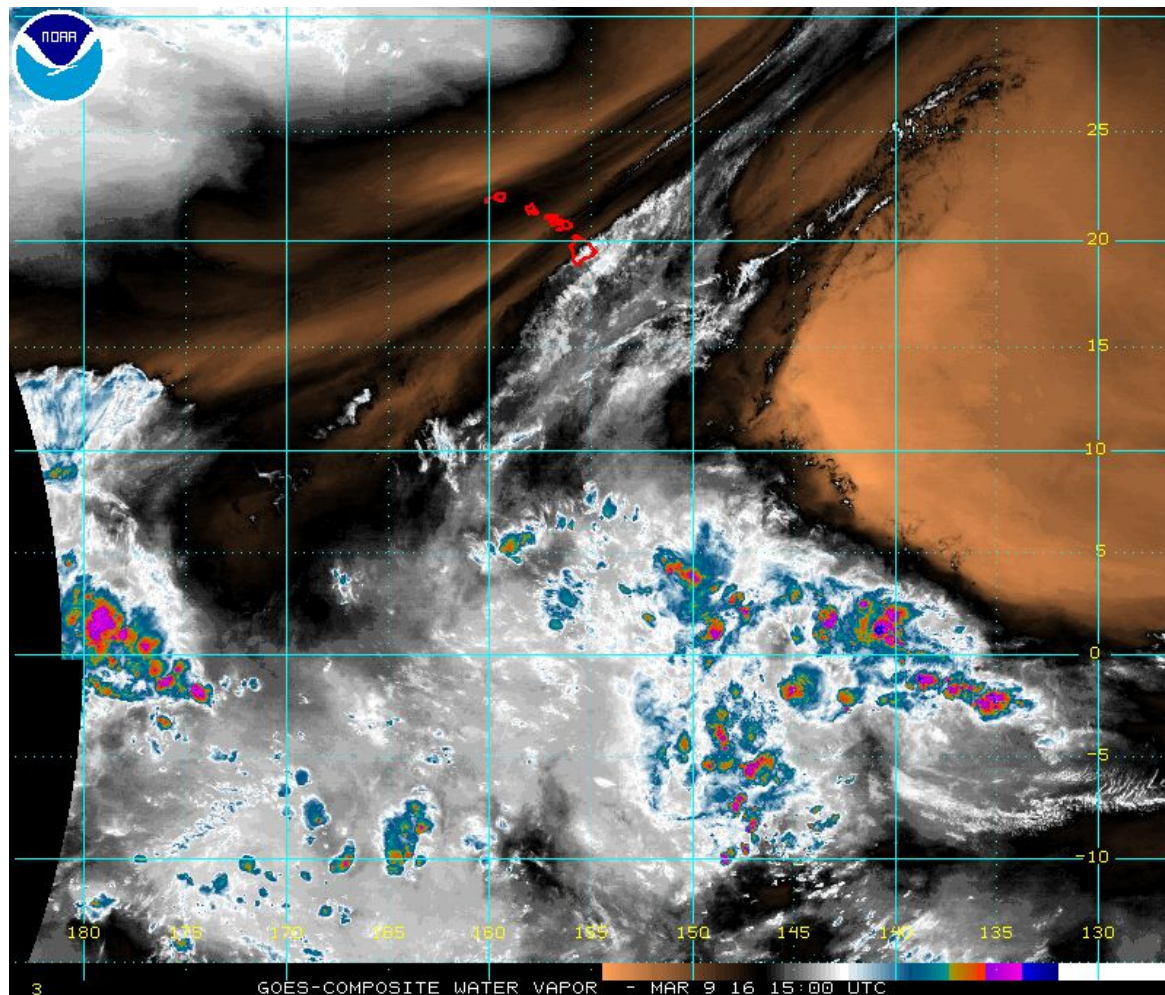
Medium - Long Term:

- Uncertainty remains as to whether trailing shortwave will stall system over Bay area

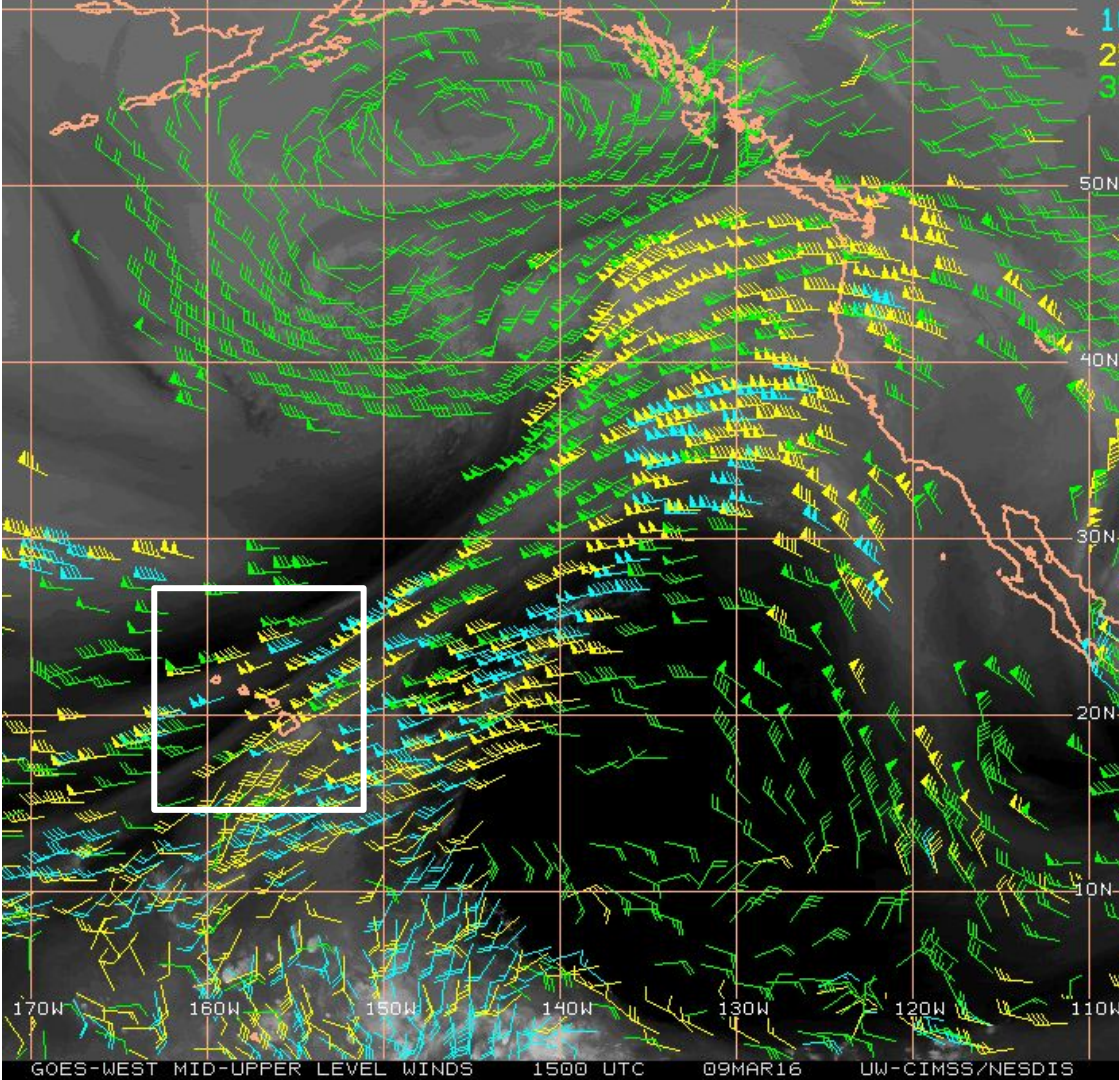
Wed 15Z



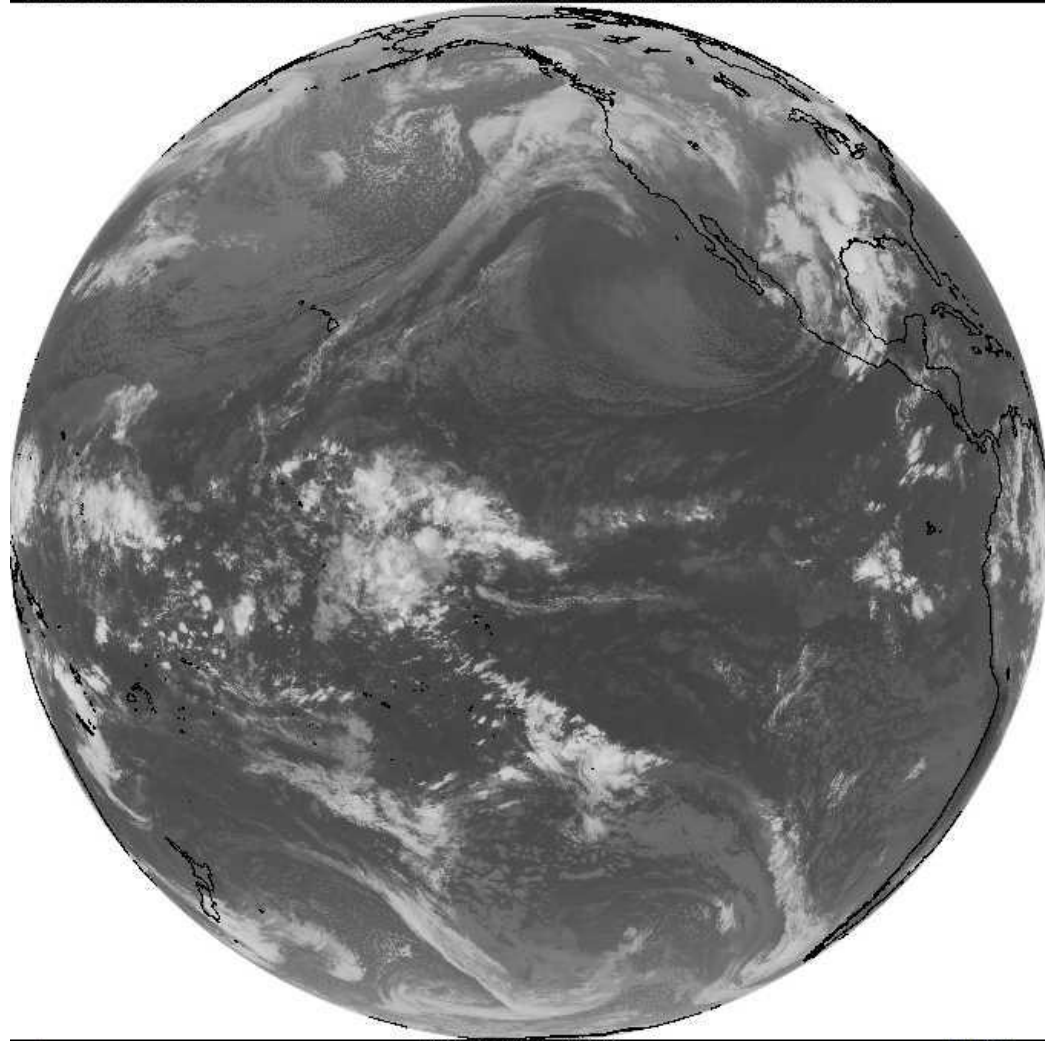
Wed 15Z



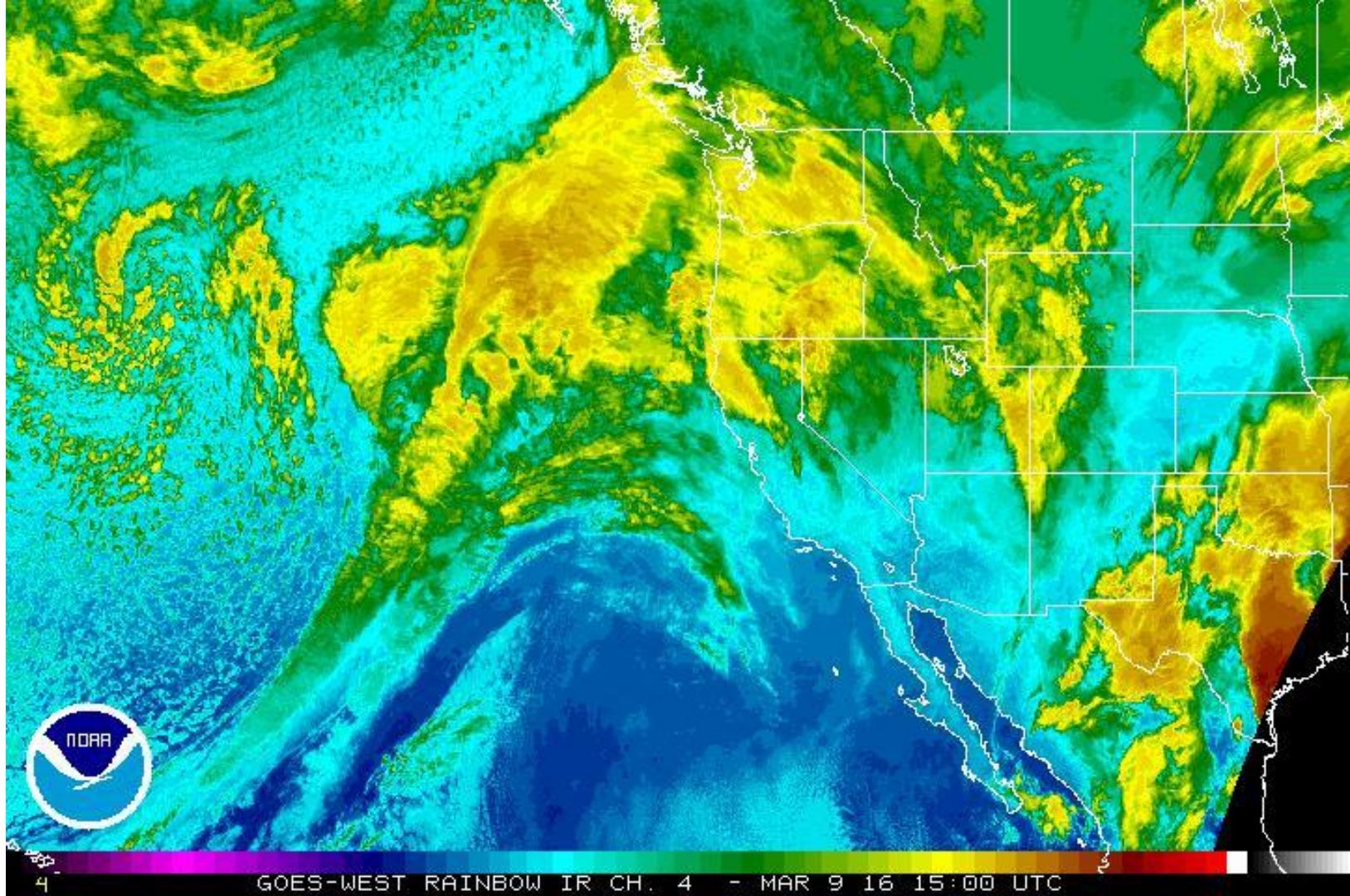
9 Mar 15Z Satellite Winds



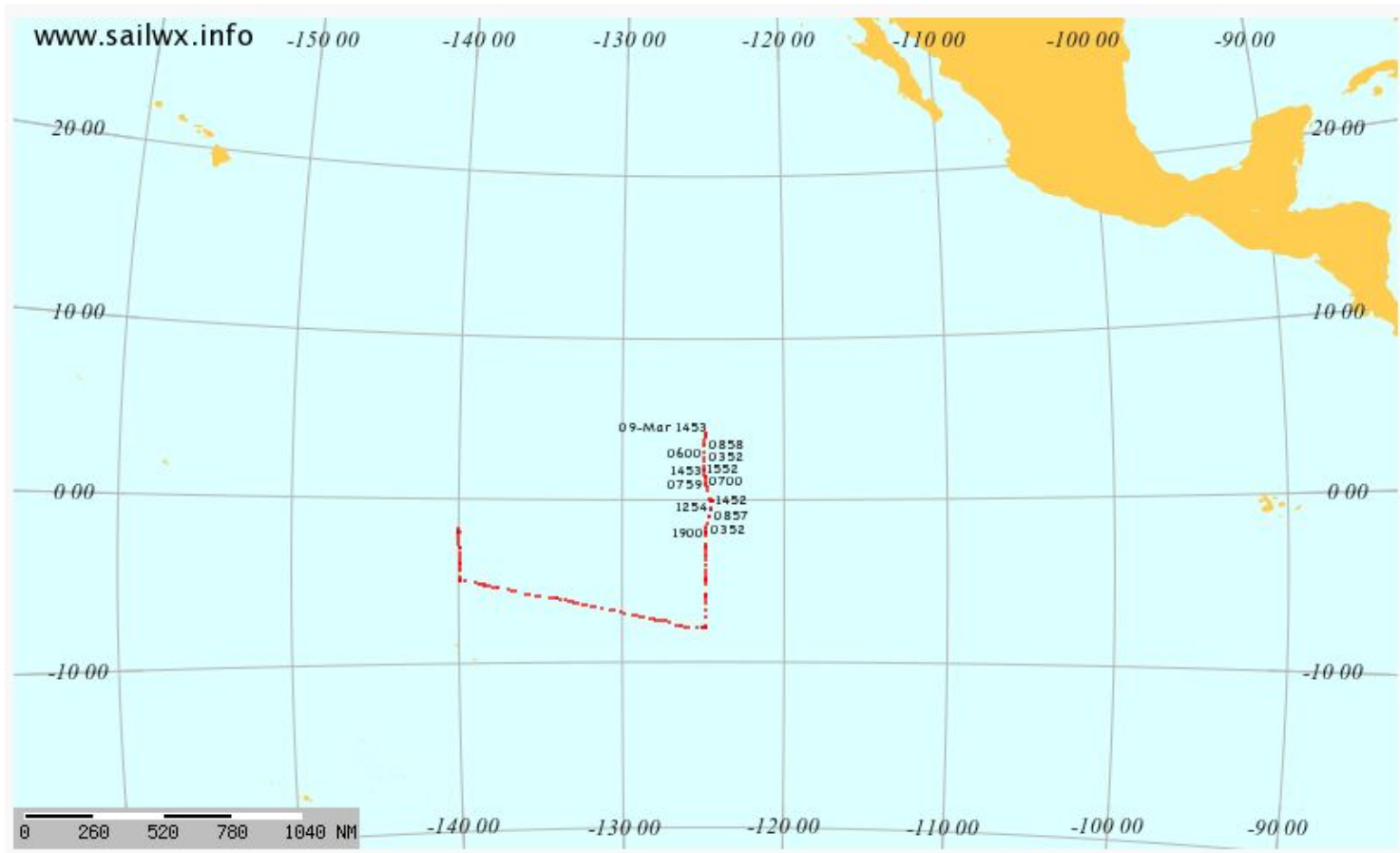
Wed 15Z



9 March
15z:
GOES
IR



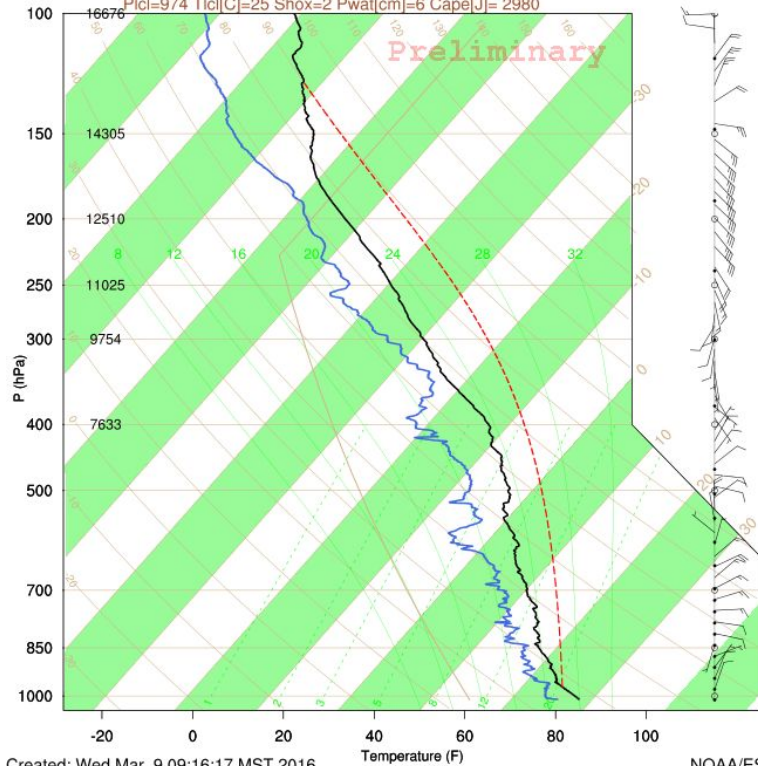
9 March
15z:
RHB



Kiritimati Is: 03/09/2016 1120Z 2.01N 157.40W

Ptcl=974 Tlcl[C]=25 Shox=2 Pwat[cm]=6 Cape[J]= 2980

Preliminary

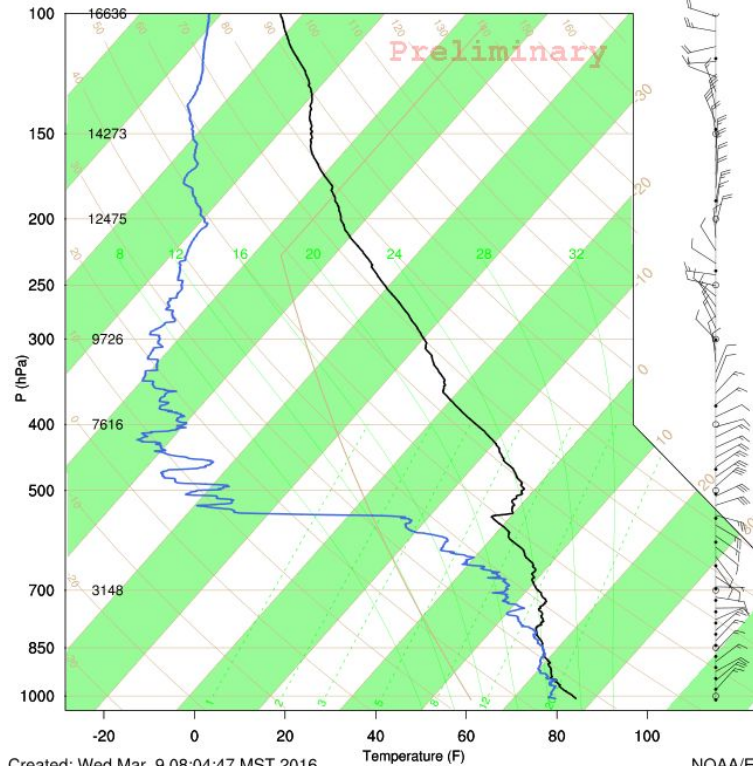


Temperature (F)

NOAA/ESRL PSD

Ronald H. Brown: 03/09/2016 1124Z (3.82N,124.99W)

Preliminary



Temperature (F)

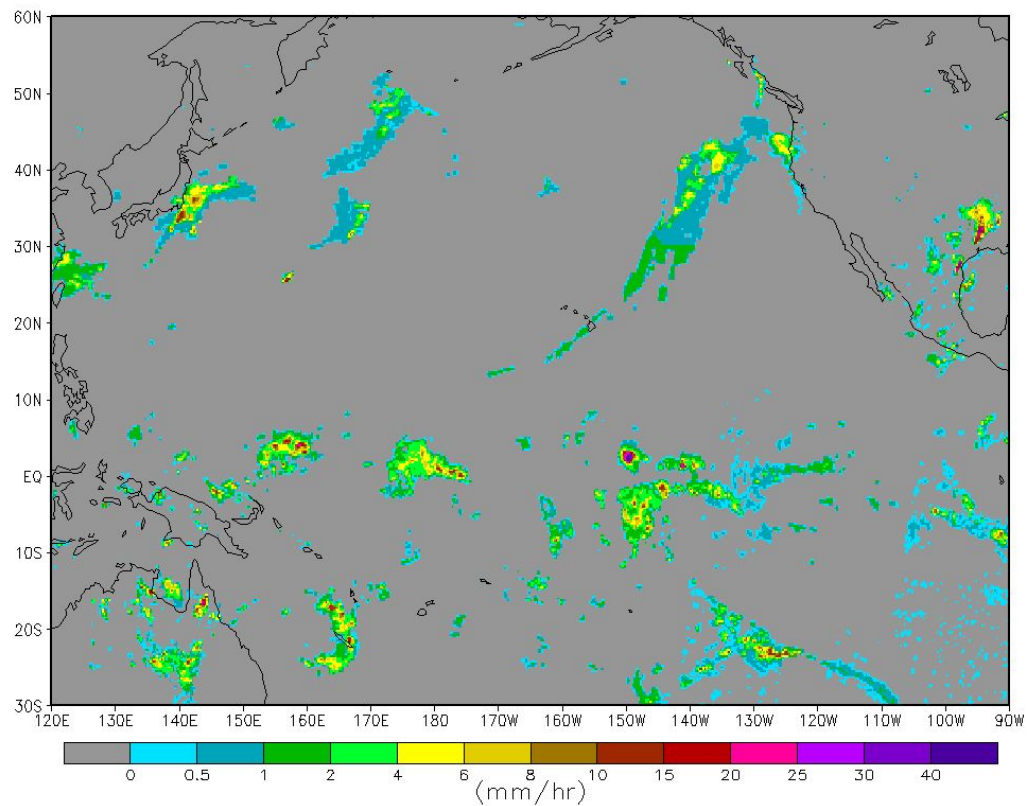
NOAA/ESRL PSD

Sounding Report From The Christmas Island Crew

0200LT: Winds still light, sky still starry. The tide is about at its midpoint and rising, and the beach is littered with 4-6" high piles of sand next to holes dug by mid-sized crabs. (These seem to generally be smaller than the maroon ones living on the hotel grounds. Some are pale with patterned backs, some have pale claws and dark underbellies.) The beach is further marked with 0.5-1" and 2-3" holes which mysteriously are not accompanied by sand piles. These seem to be used by the smaller white or pale-sand-colored crabs. Leslie has no idea if these pale crabs, which seem to mostly come in 2 separate sizes, are separate types or just different ages. Many of the various types of crabs were scuttling back and forth to the water line after waves broke; a few were more interested in us than was comfortable.

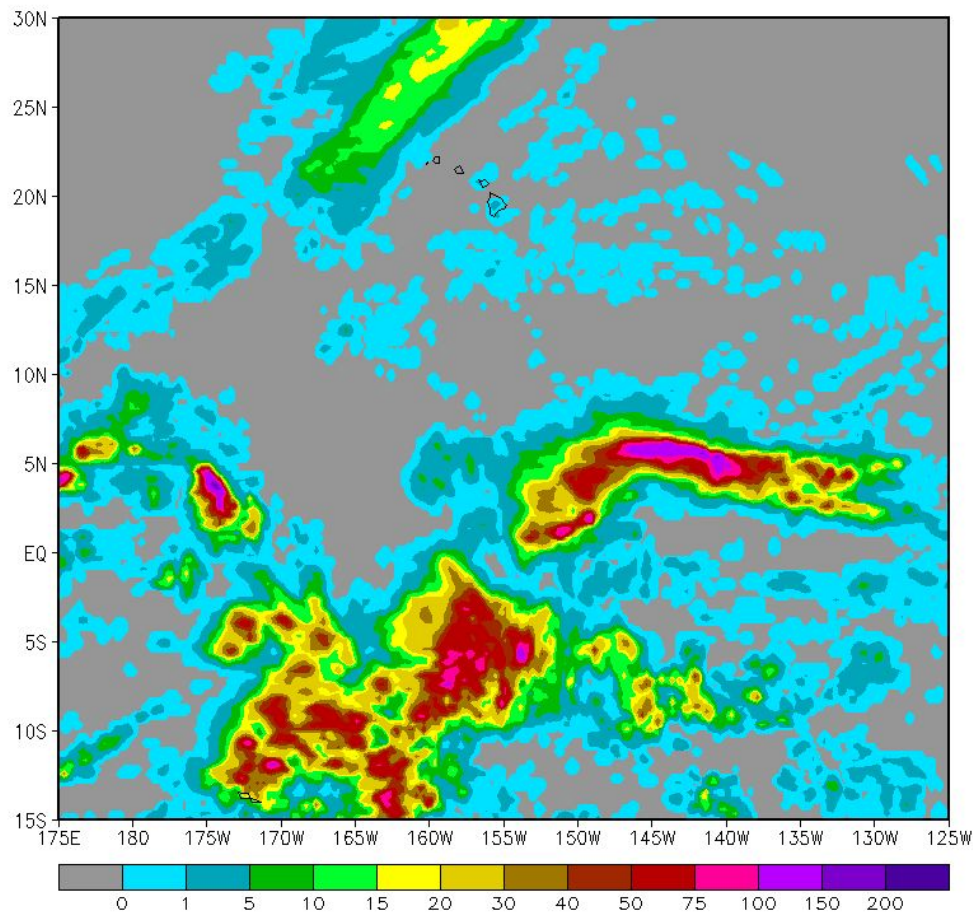
Wed 13Z CMORPH Rainfall

CMORPH_RAW_RT @ 2016-Mar-09 13:00Z



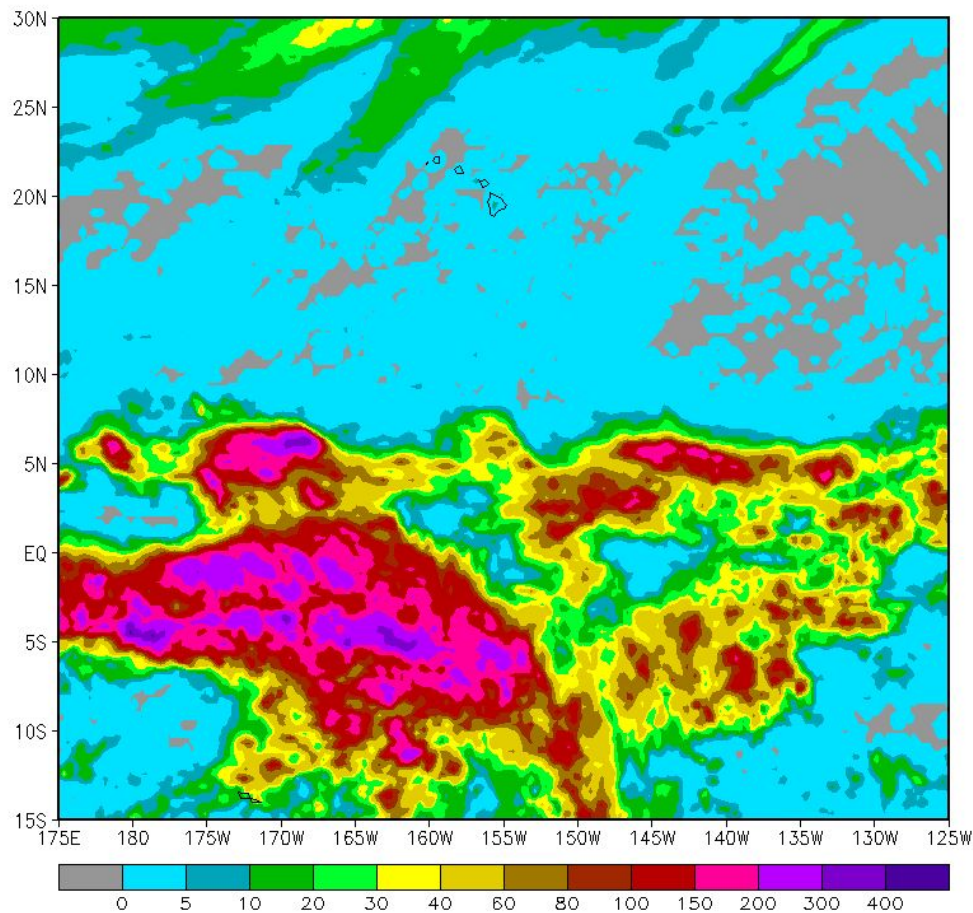
CMORPH 24 Hour Rainfall

CMORPH 24-hour Rainfall Accumulation (mm)
(07Mar2016 12Z - 08Mar2016 12Z)



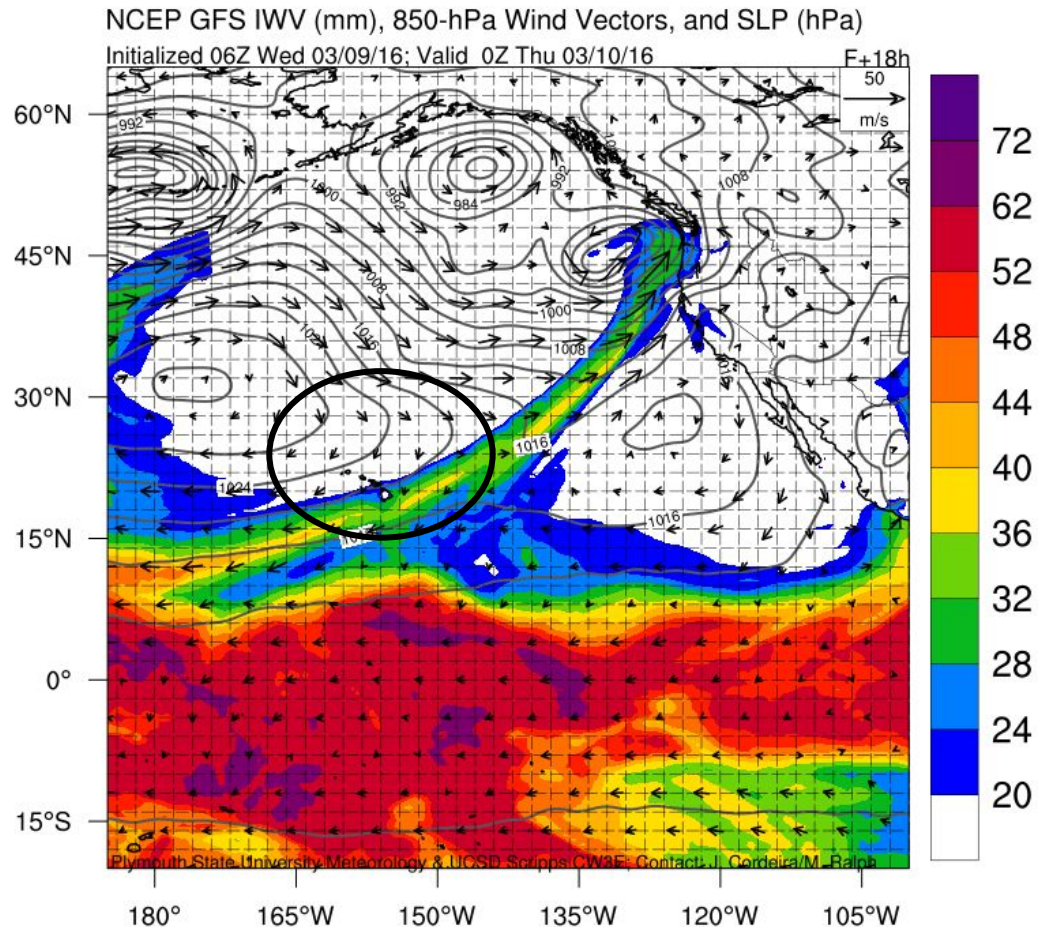
CMORPH 7 Day Rainfall

CMORPH 7-day Rainfall Accumulation (mm)
(01Mar2016 12Z - 08Mar2016 12Z)

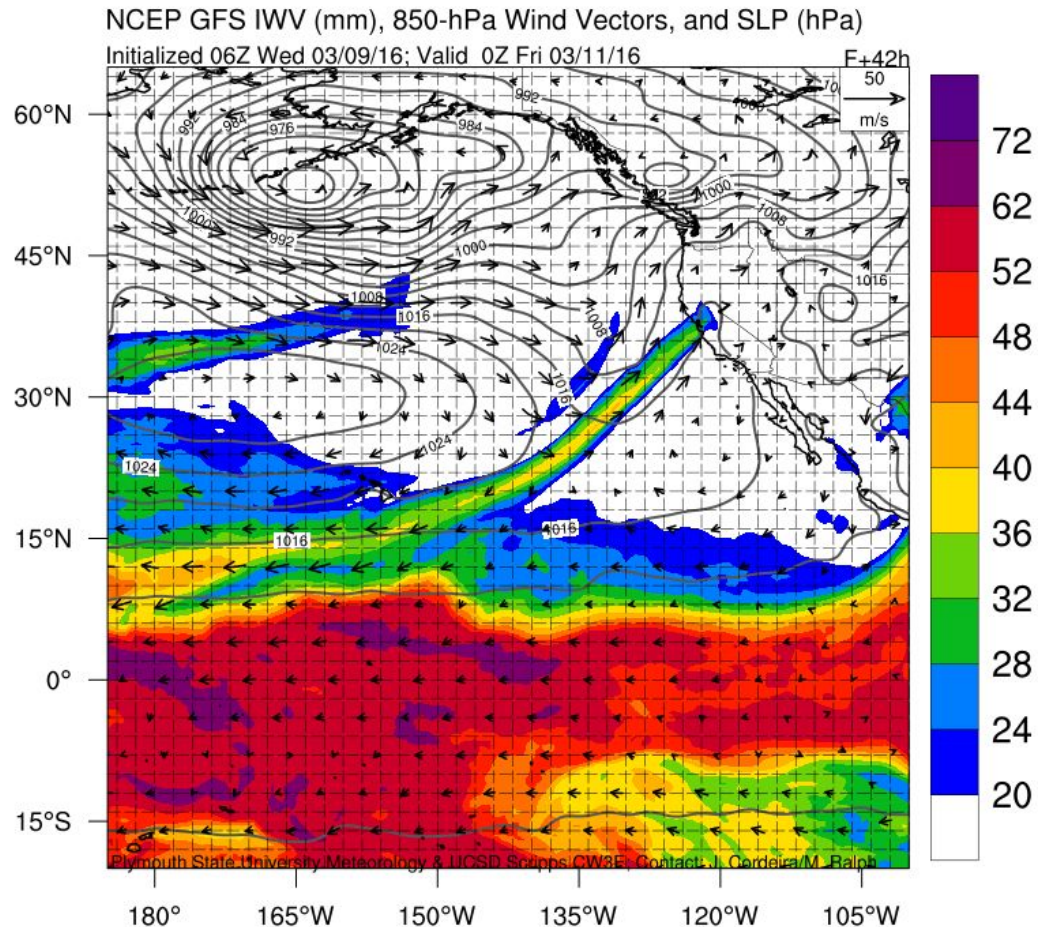


GFS 06Z IVT, IWV, Precip Forecasts

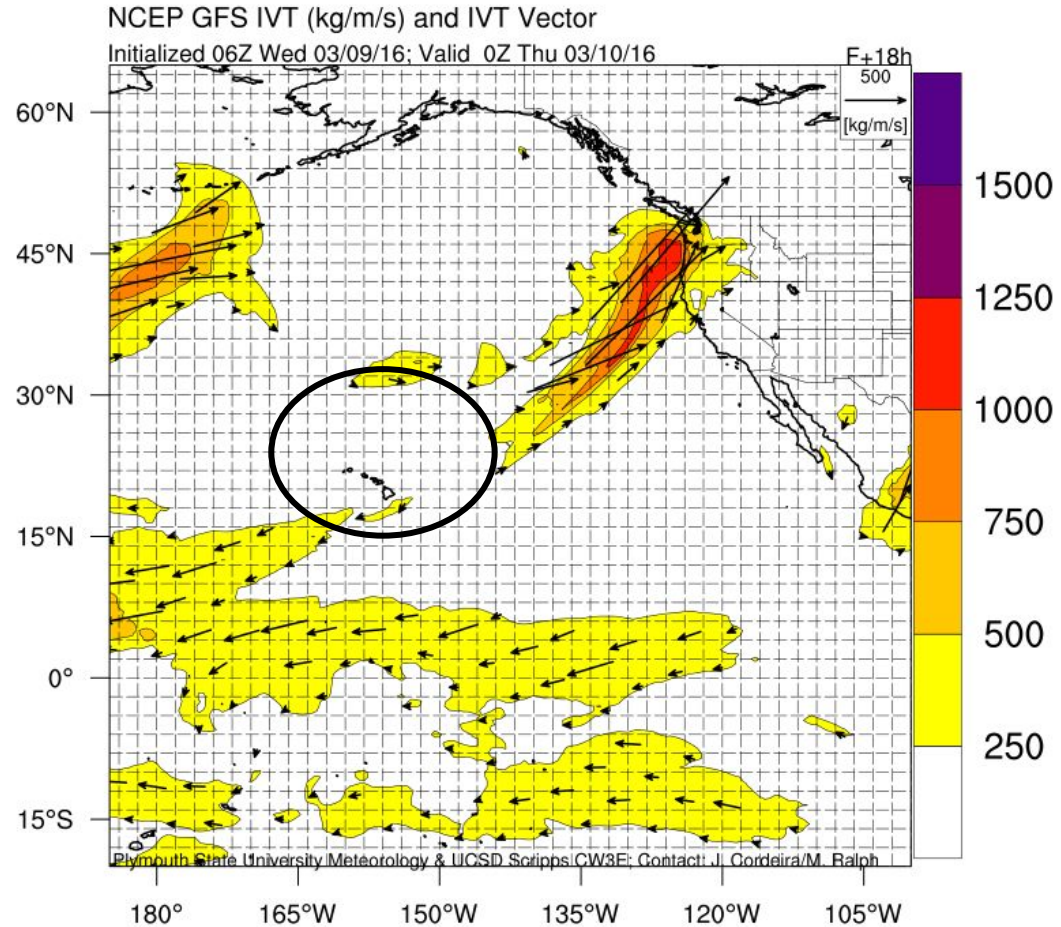
GFS 06Z I WV Forecast Valid 00Z THU



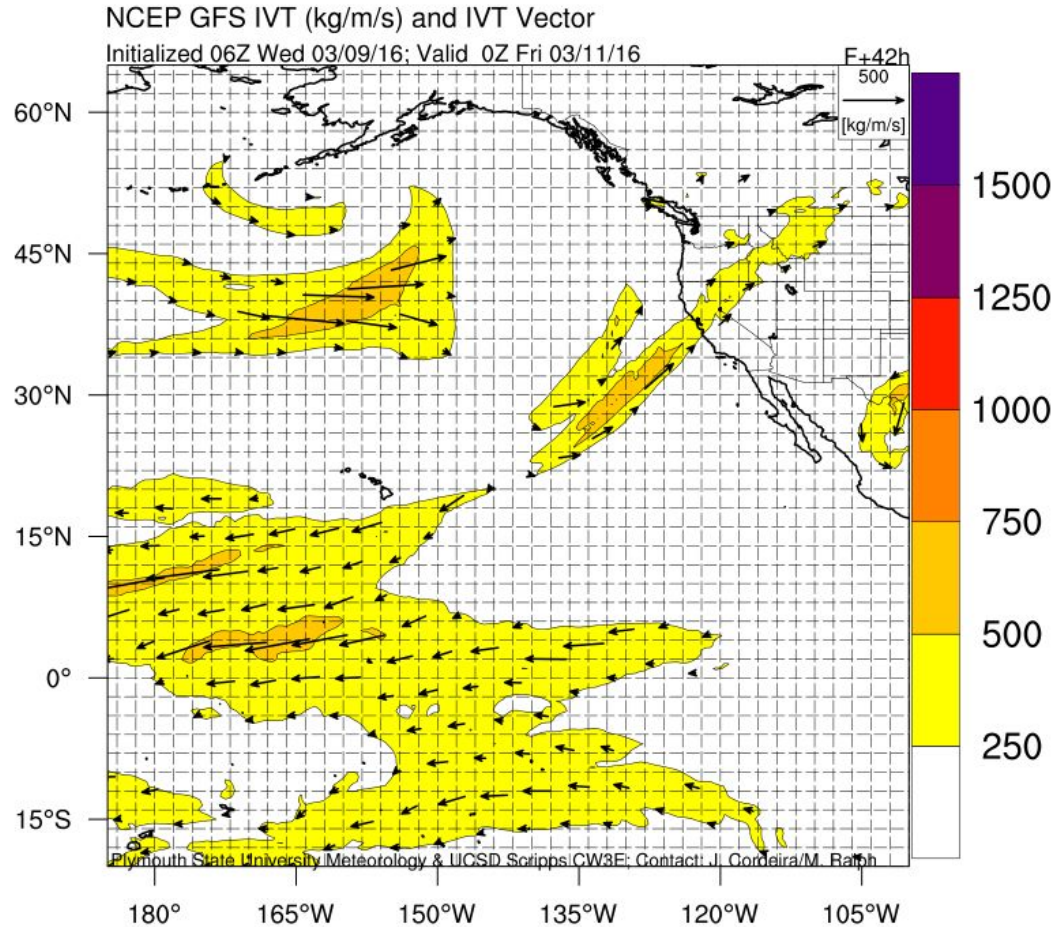
GFS 06Z IWV Forecast Valid 00Z FRI



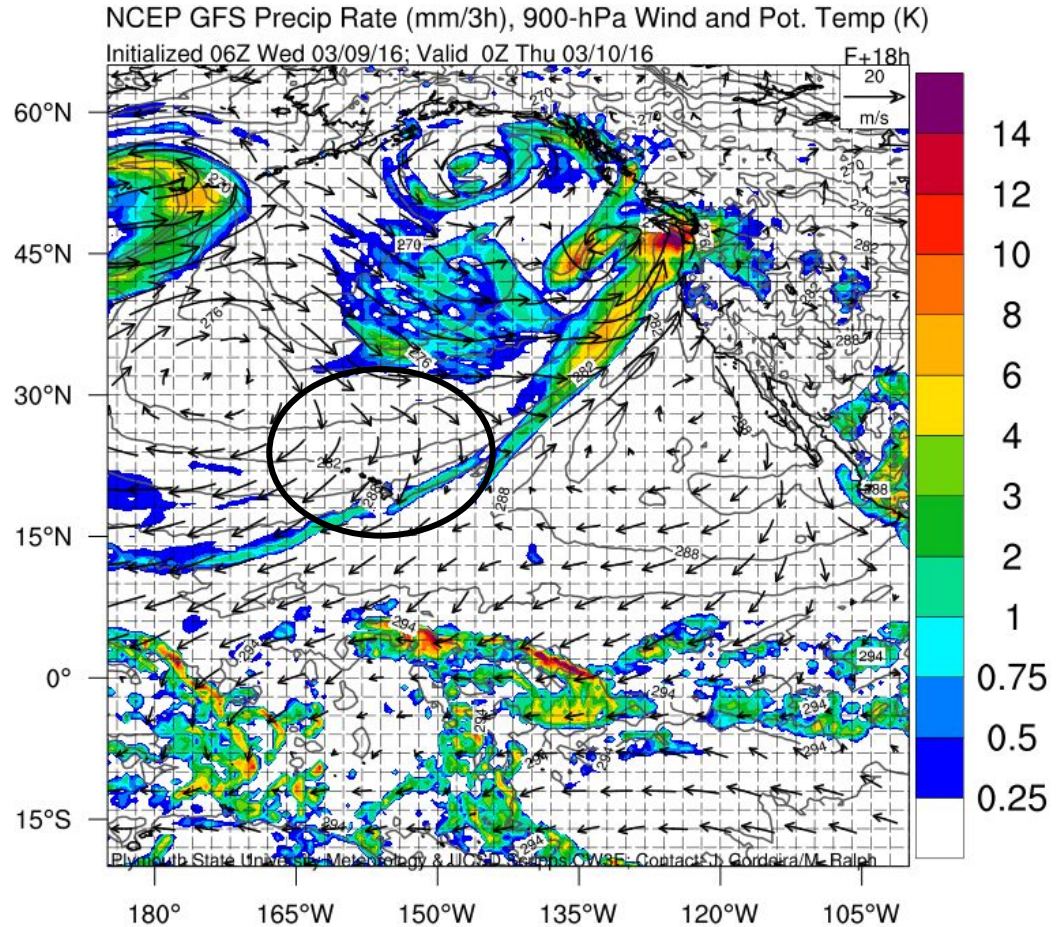
GFS 06Z IVT Forecast Valid 00Z THU



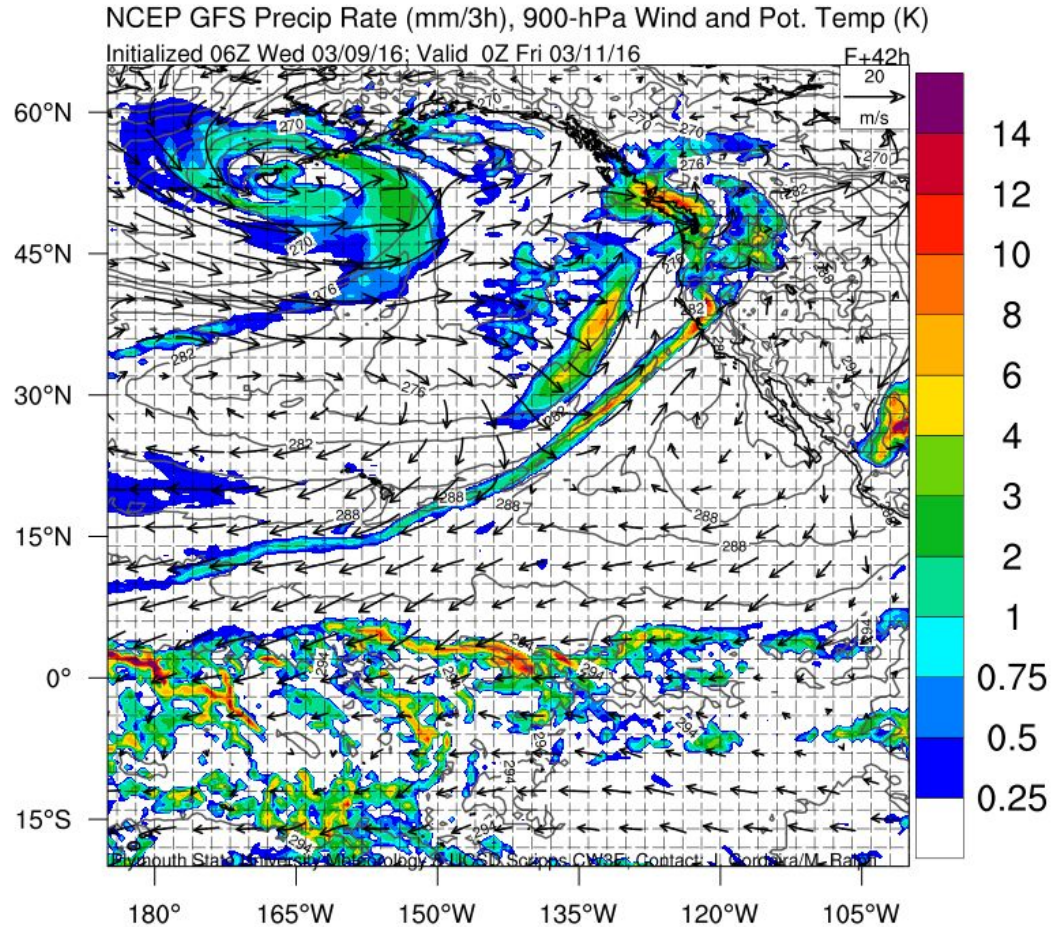
GFS 06Z IVT Forecast Valid 00Z FRI



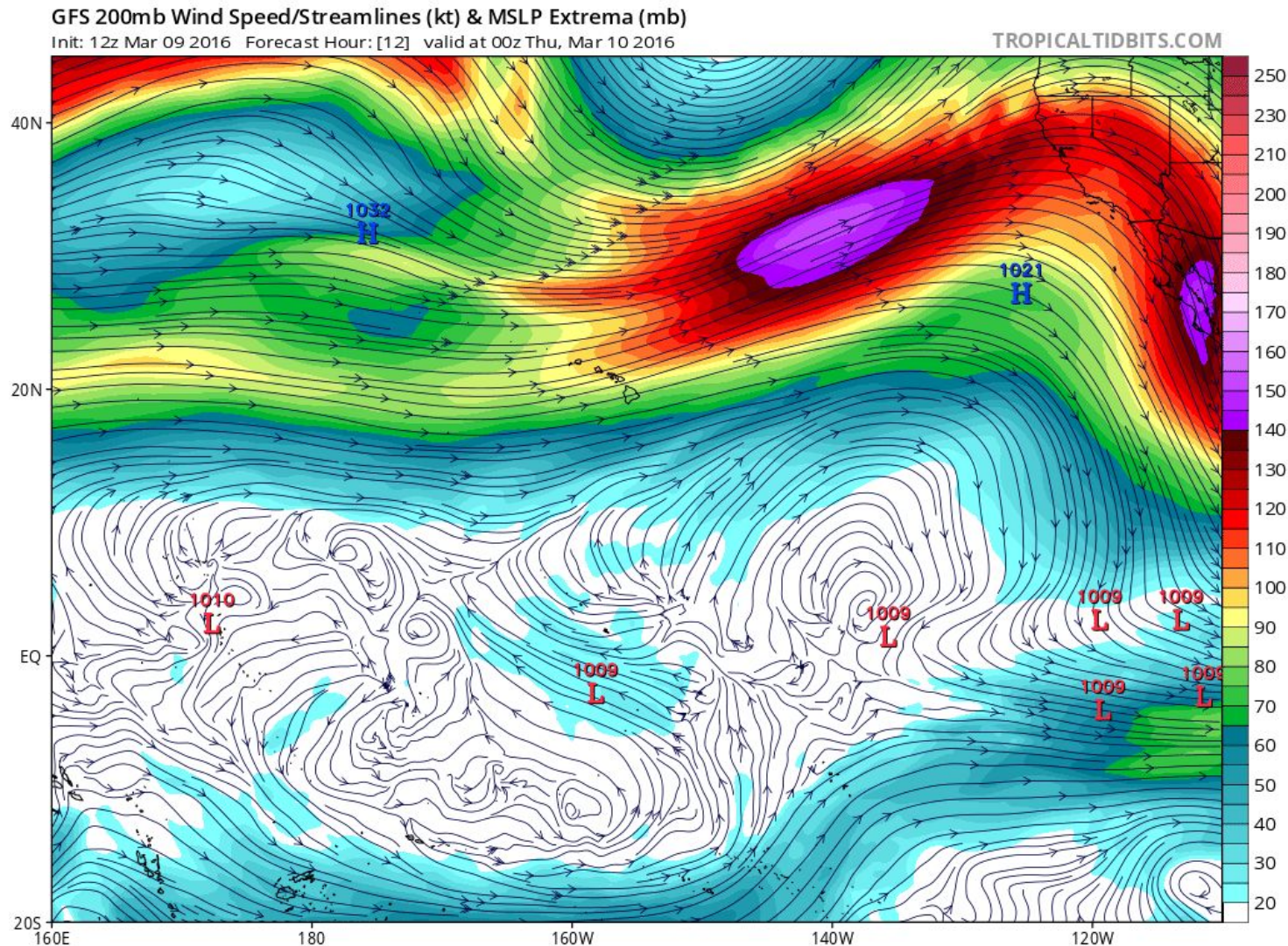
GFS 06Z Precip Forecast Valid 00Z THU



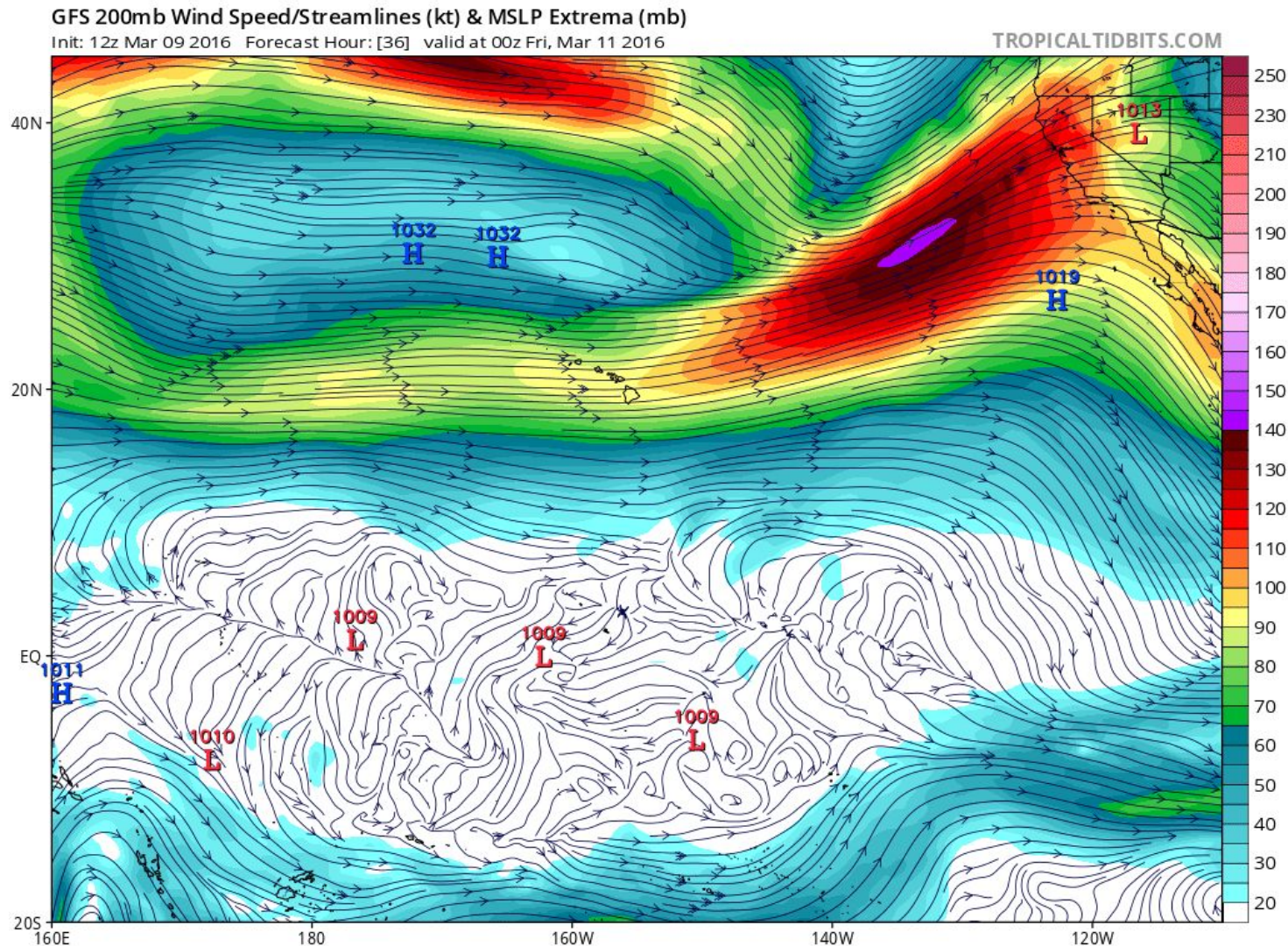
GFS 06Z Precip Forecast Valid 00Z FRI



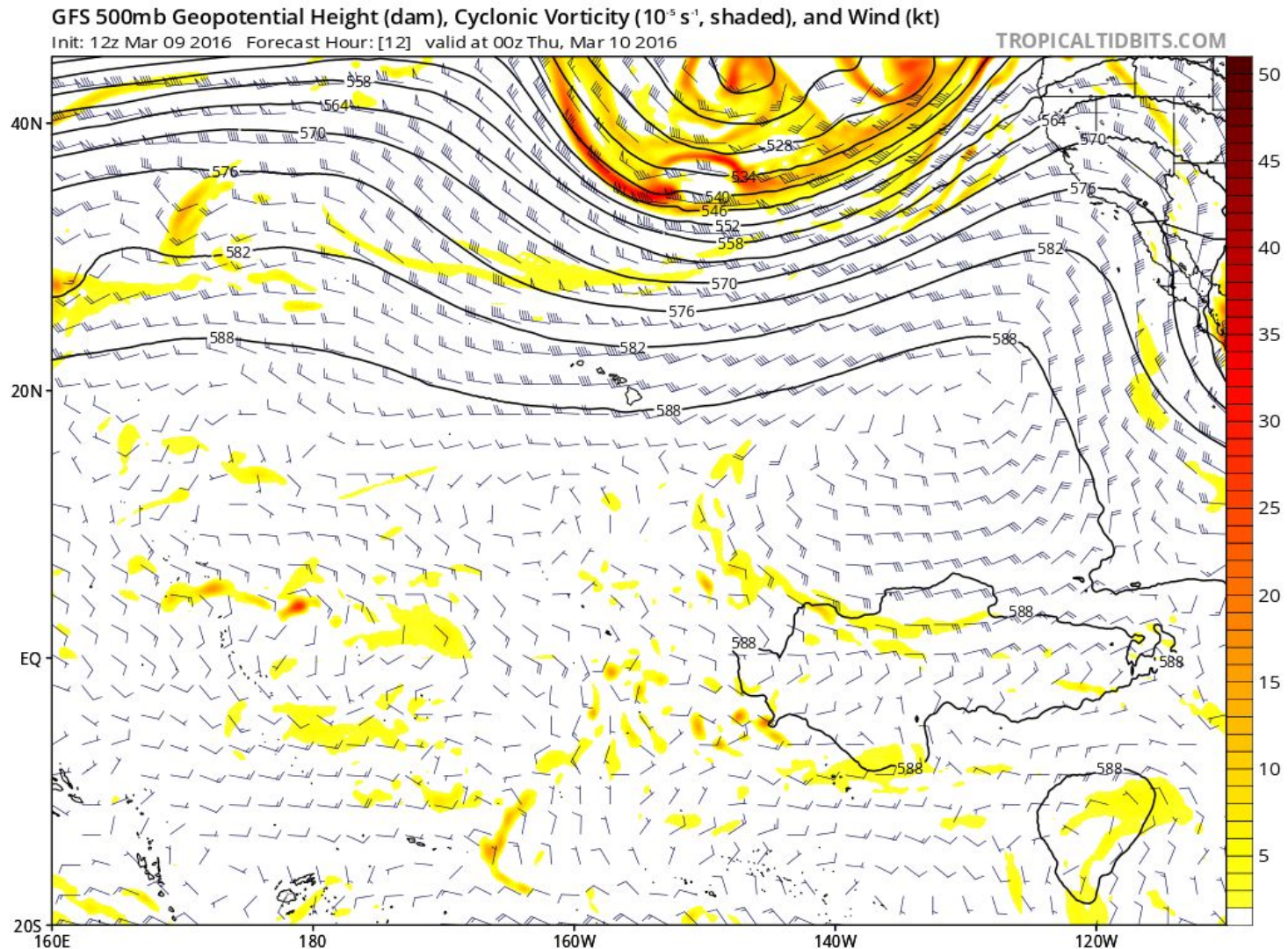
GFS 06Z 200 mb Forecast Valid 00Z THU



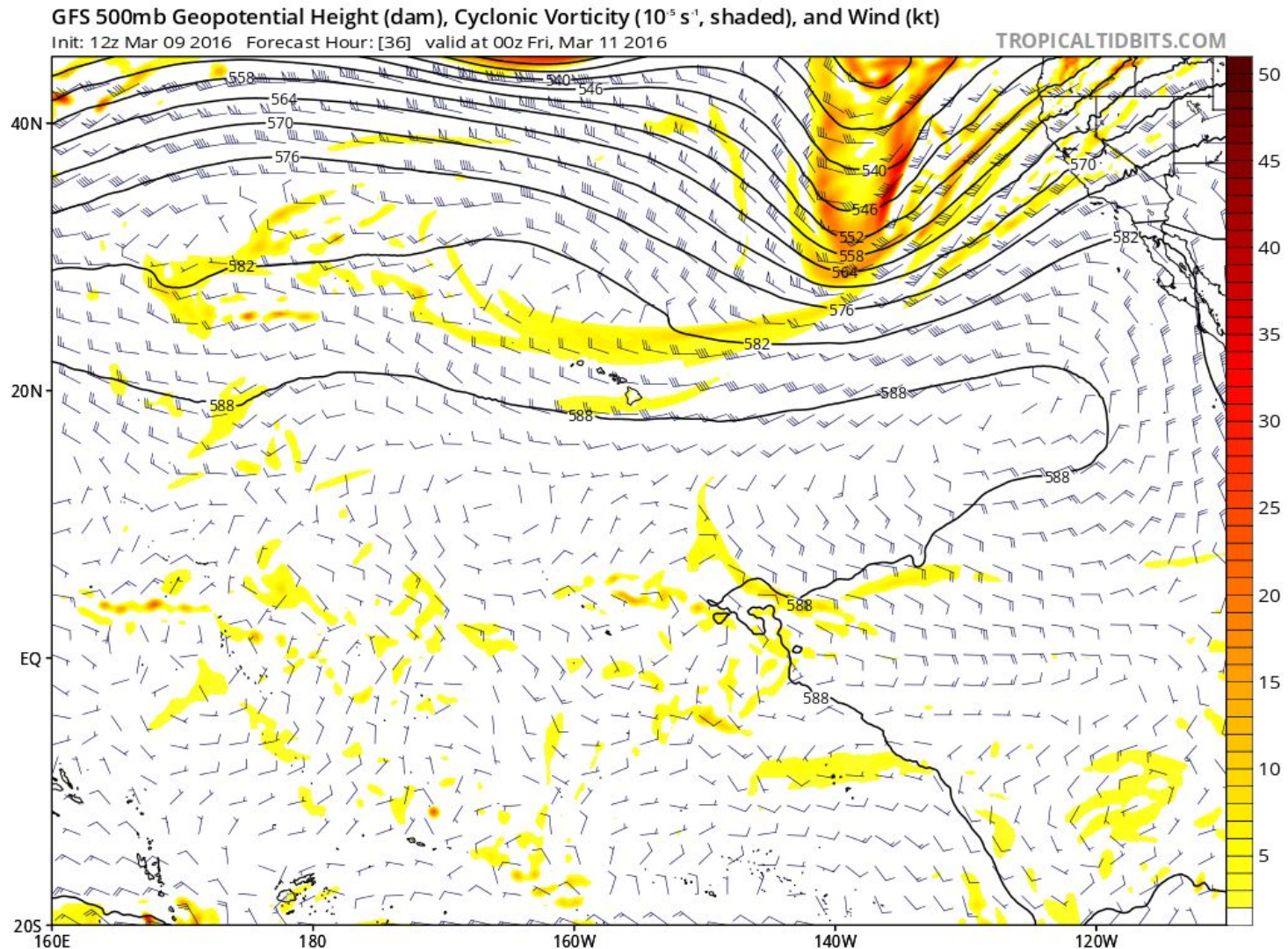
GFS 06Z 200 mb Forecast Valid 00Z FRI



GFS 06Z 500 mb Forecast Valid 00Z THU

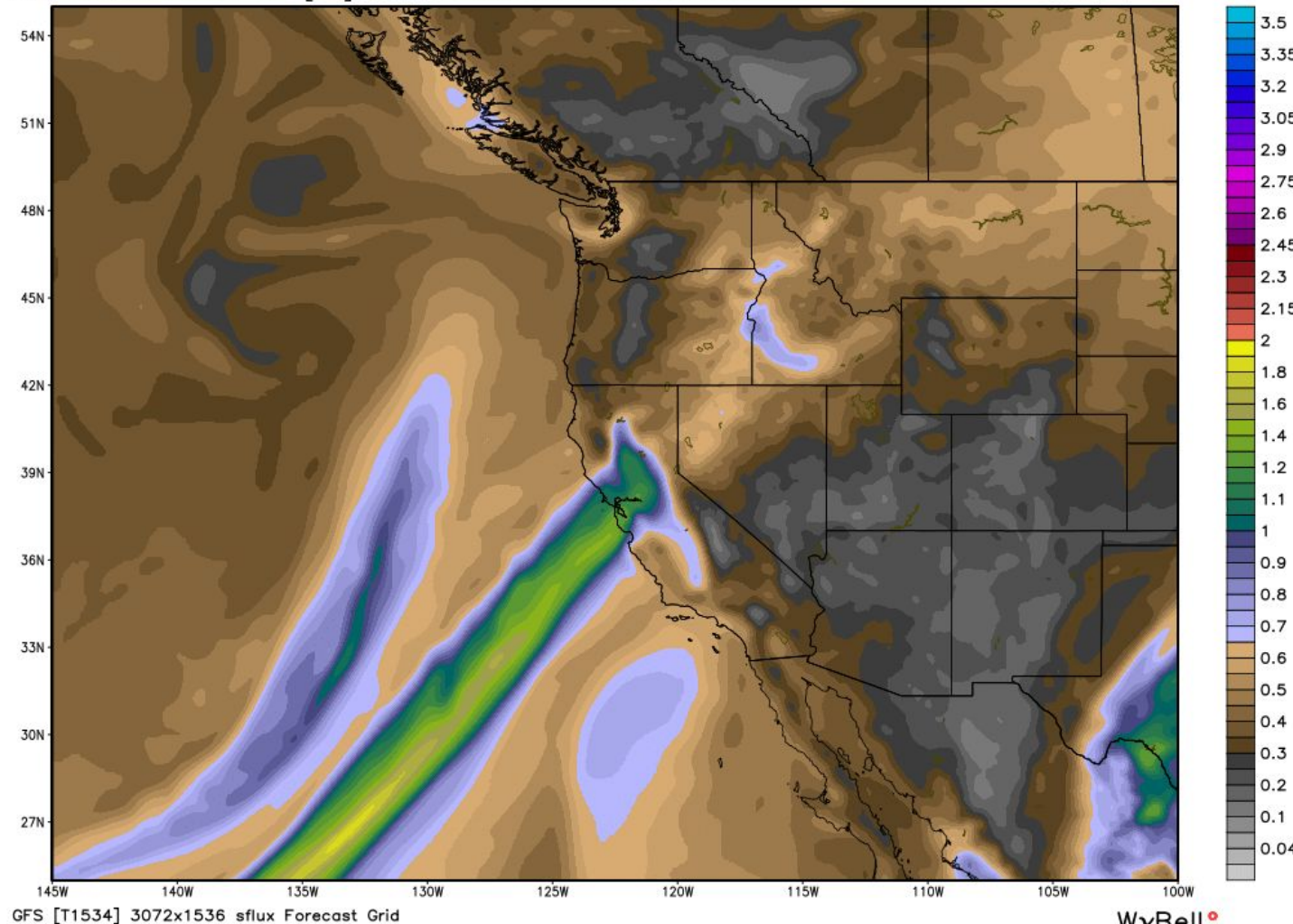


GFS 06Z 500 mb Forecast Valid 00Z FRI



NCEP GFS Precipitable Water [inch]
Init: 12Z09MAR2016 -- [36] hr --> Valid Fri 00Z11MAR2016

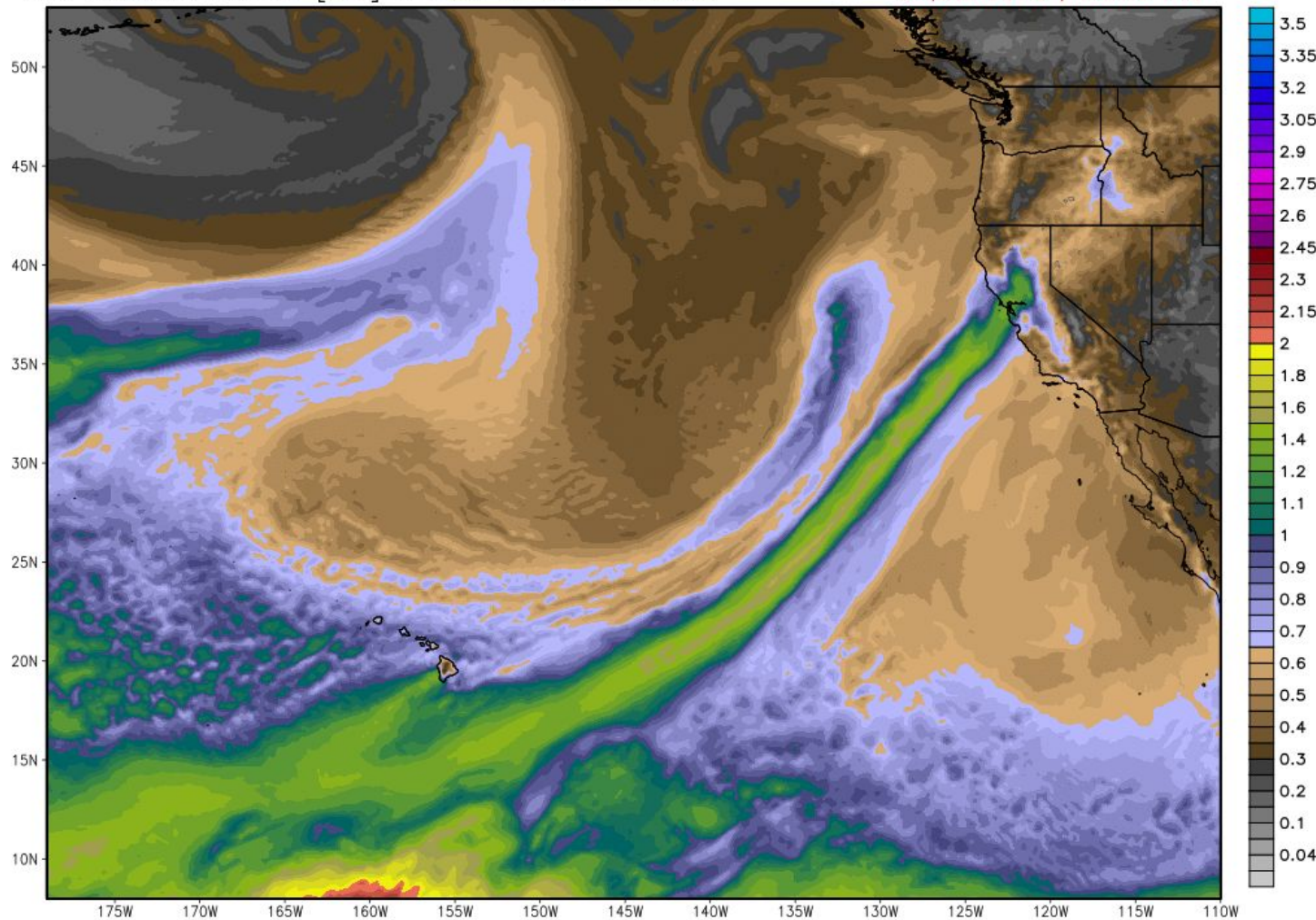
GFS 12Z IWV Forecast Valid 00Z FRI



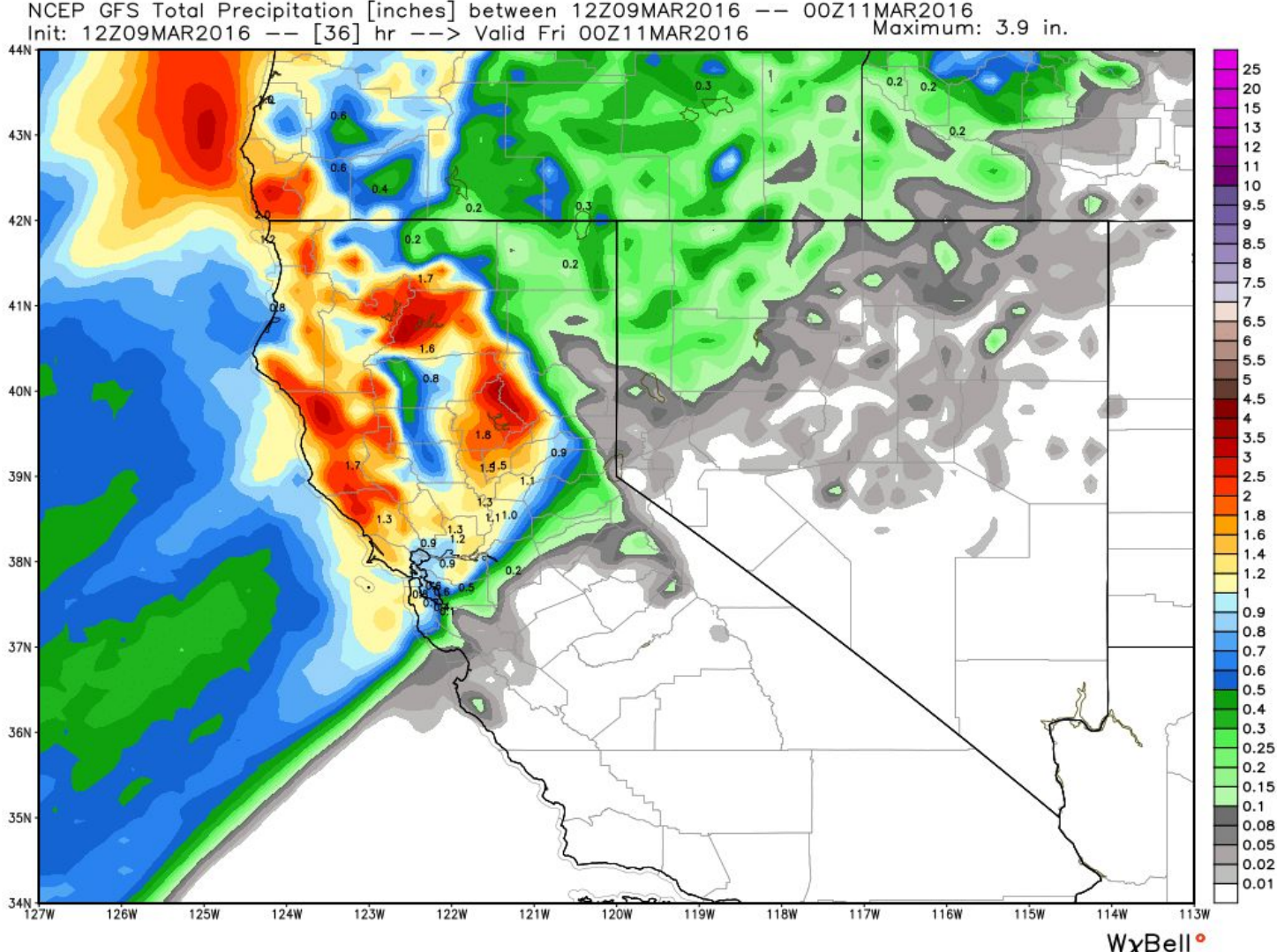
ECMWF Column Water [inch]
INIT: 00Z09MAR2016 fx: [048] hr --> Fri 00Z11MAR2016

Min|Max 961.2 | 1031.6 hPa

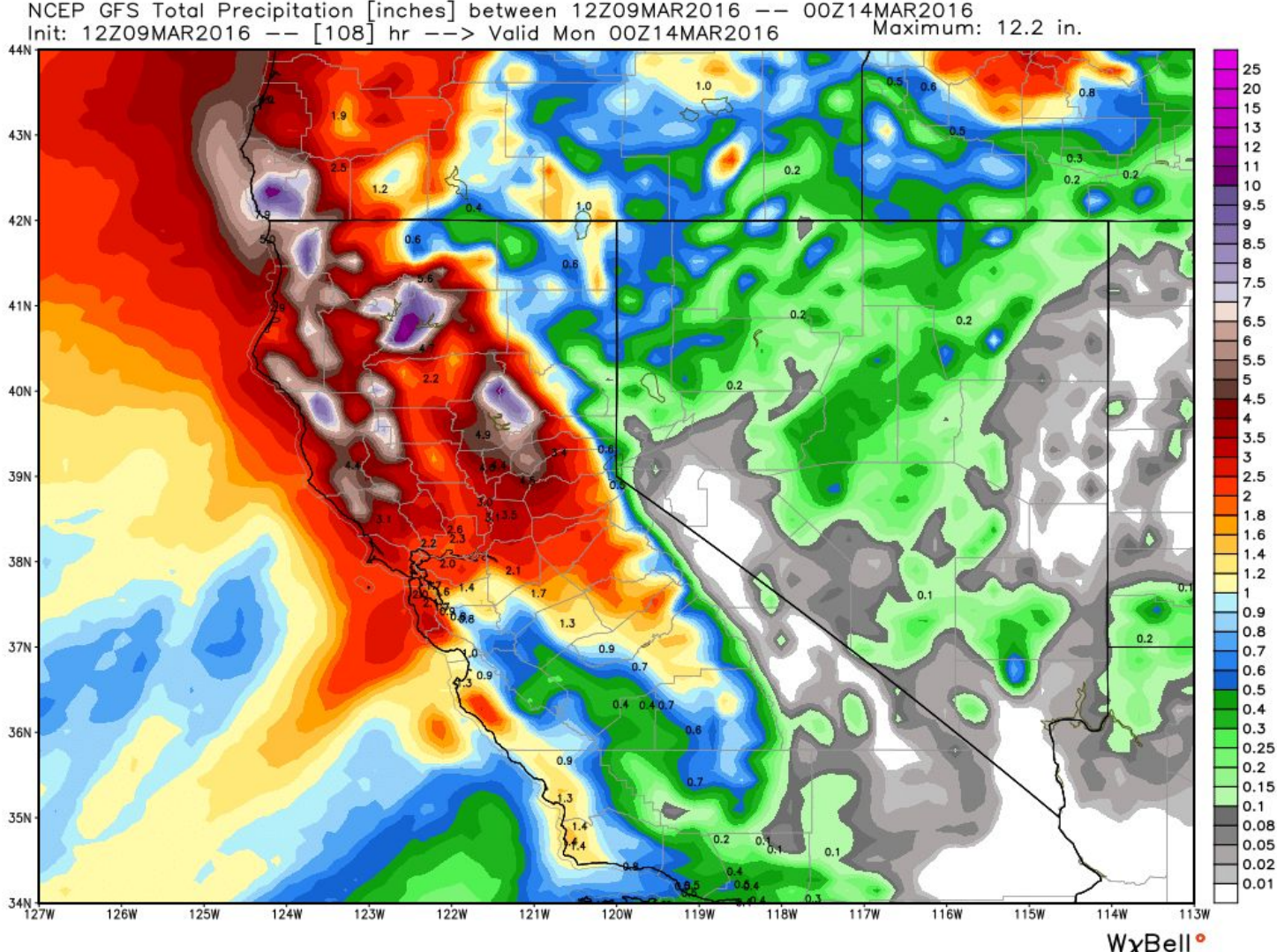
EC 00Z IWV
Forecast
Valid 00Z
FRI



GFS 12Z 36 HR Total Precip Forecast Valid 00Z FRI

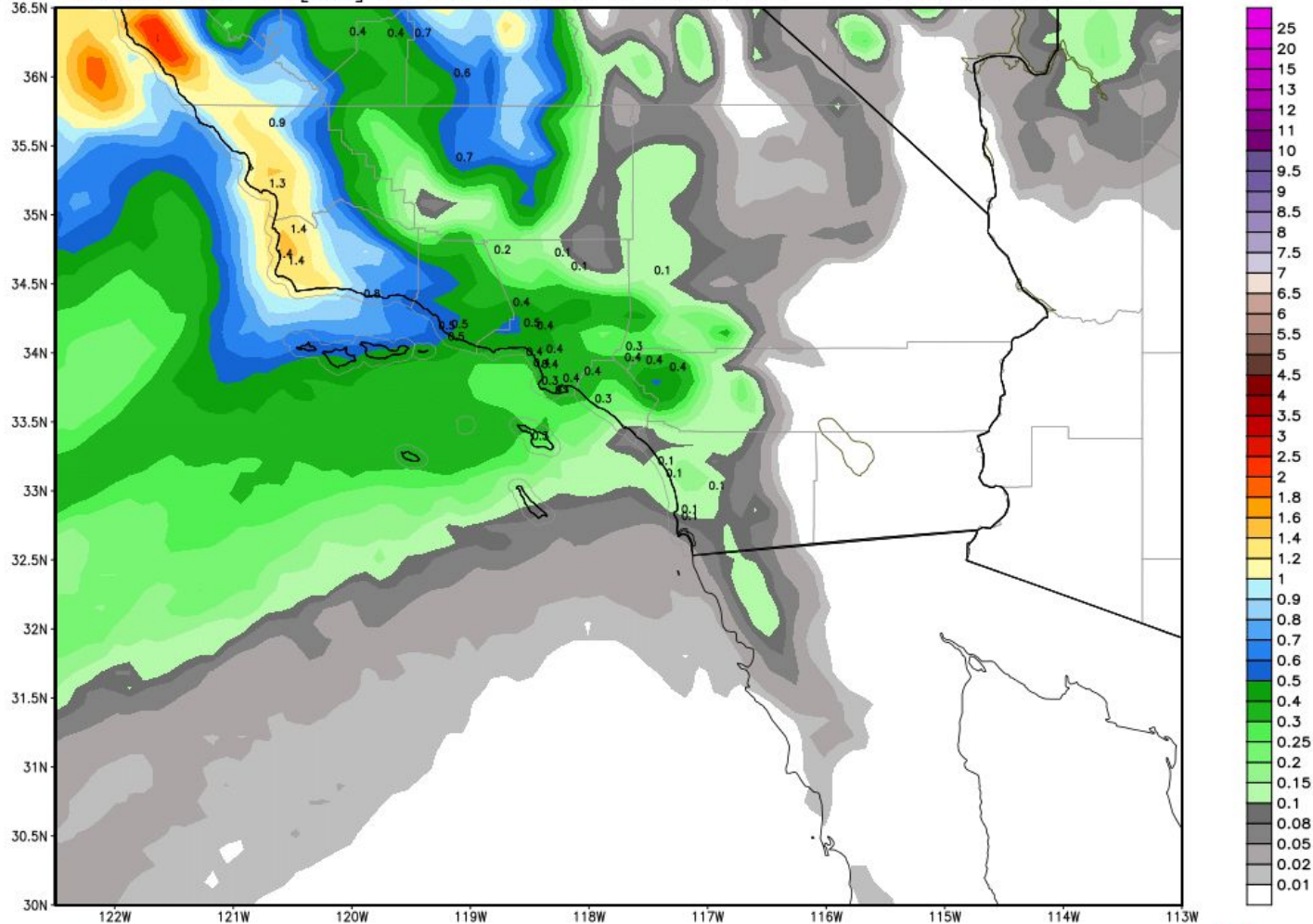


GFS 12Z 108 Hr Total Precip Forecast Valid 00Z Mon

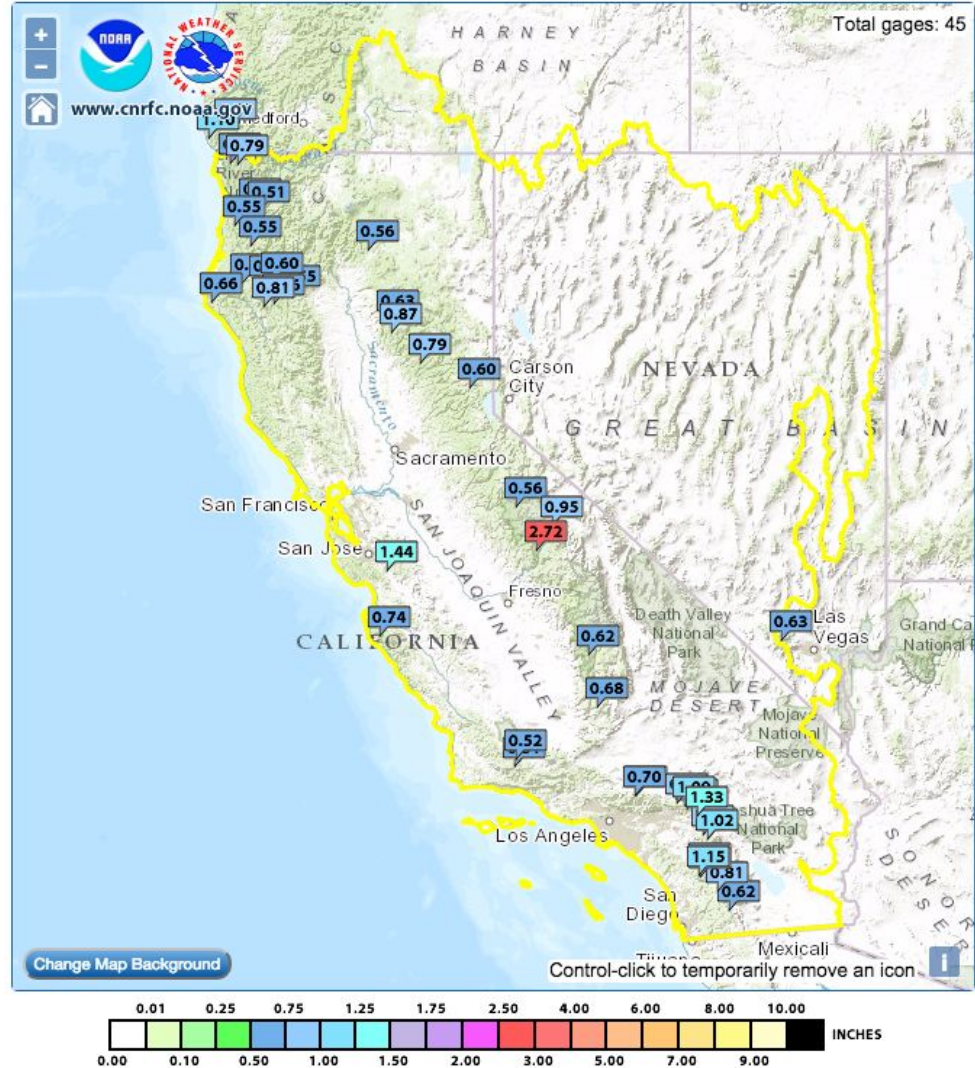


NCEP GFS Total Precipitation [inches] between 12Z09MAR2016 -- 00Z14MAR2016
Init: 12Z09MAR2016 -- [108] hr --> Valid Mon 00Z14MAR2016 Maximum: 2.6 in.

GFS 12Z 108 Hr Total Precip Forecast Valid 00Z Mon



CNRFC 24 HR QPE (> 0.5")



CNRFC Guerneville Forecast Point

RUSSIAN RIVER - GUERNEVILLE (GUEC1)

Latitude: 38.50° N

Longitude: 123.00° W

Elevation: 65 Feet

Location: Sonoma County in California

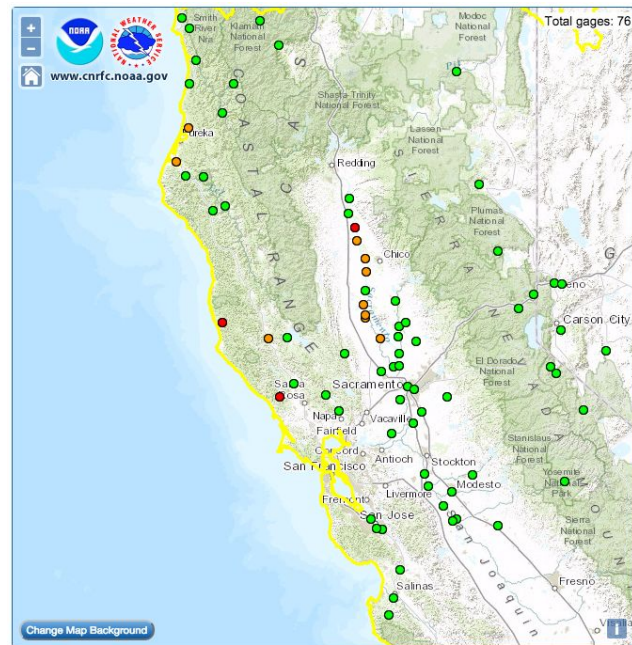
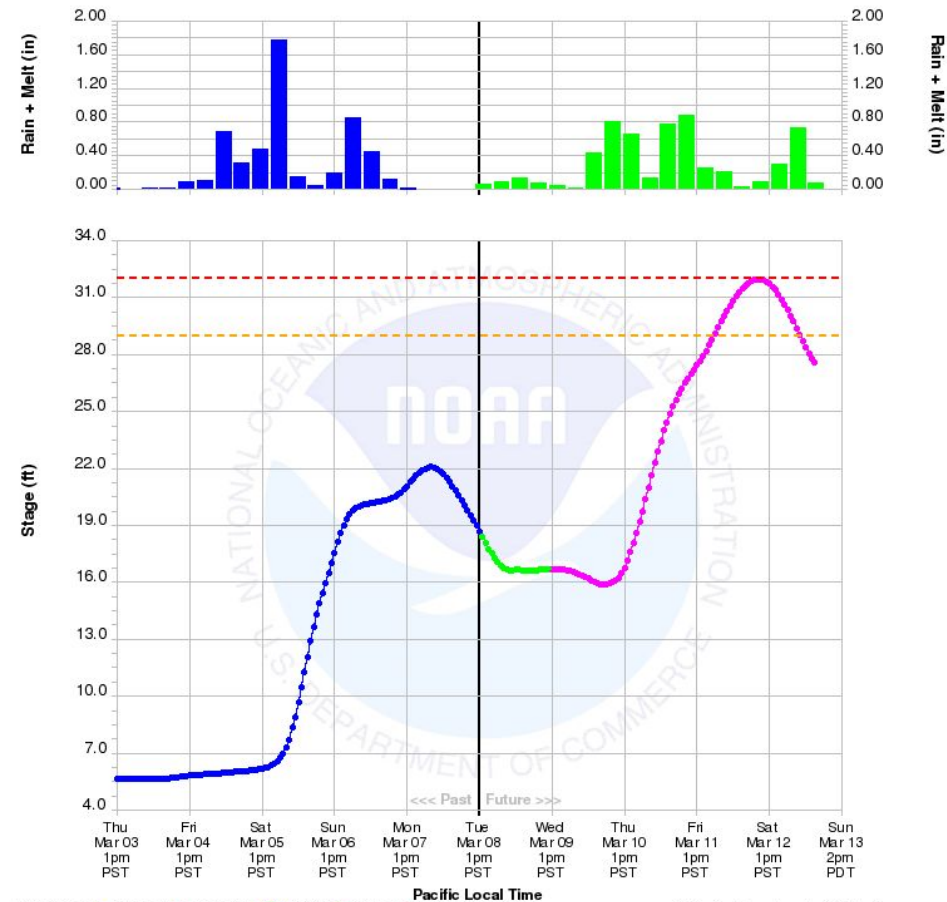
River Group: Russian Napa

Issuance Time: Mar 08 2016 at 1:53 PM PST

Next Issuance: Mar 09 2016 at 9:00 AM PST

Monitor Stage: 29.0 Feet

Flood Stage: 32.0 Feet



The number inside each circle above represents the number of gages with forecast conditions inside that category.

Observed: Blue line, Forecast: Green line, Guidance: Red line, Monitor: Yellow line, Flood: Purple line

California Department of Water Resources

PSD Distributed Model

Hydrometeorological Visualization Tool (HVT)

Number: 25/73
Time: Wed, 09 Mar 2016 14:00:00 GMT
T 0 Observed

Number: 25/73
Time: Wed, 09 Mar 2016 14:00:00 GMT
T 0 Observed



Image Opacity
0% 100%

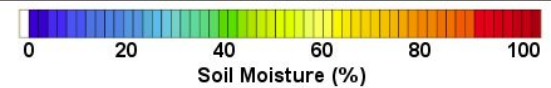
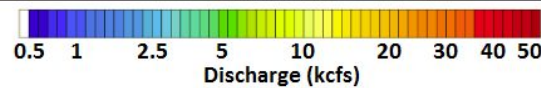
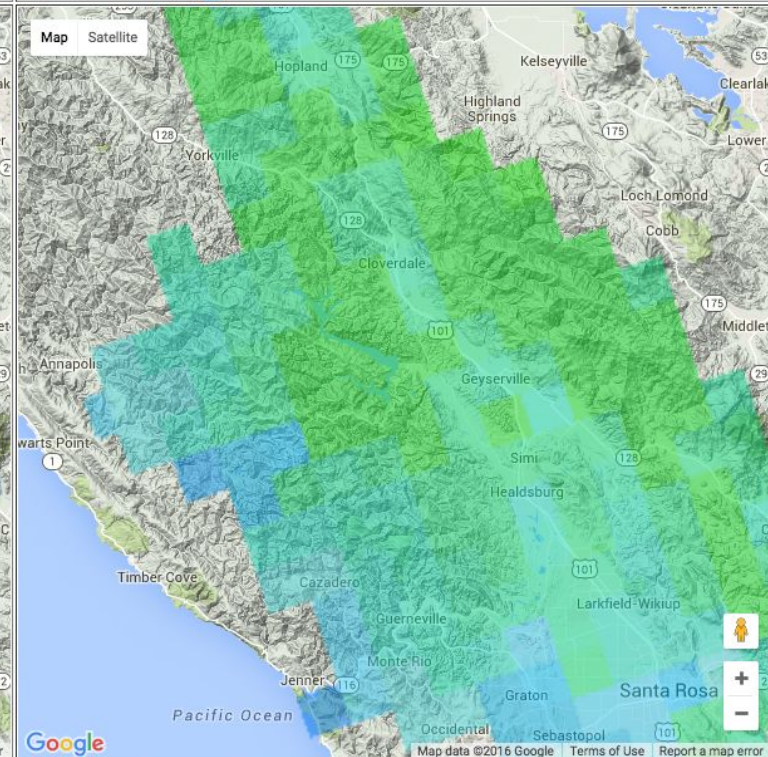
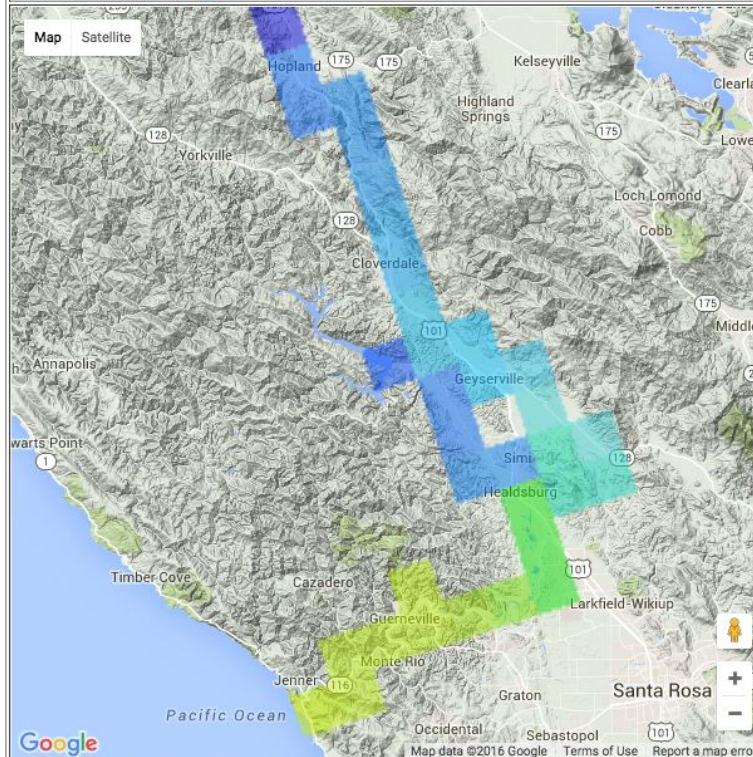
☒ Realtime data
☐ Historical data

Map1: Discharge (kcfs)

[Match Map 2 View](#)

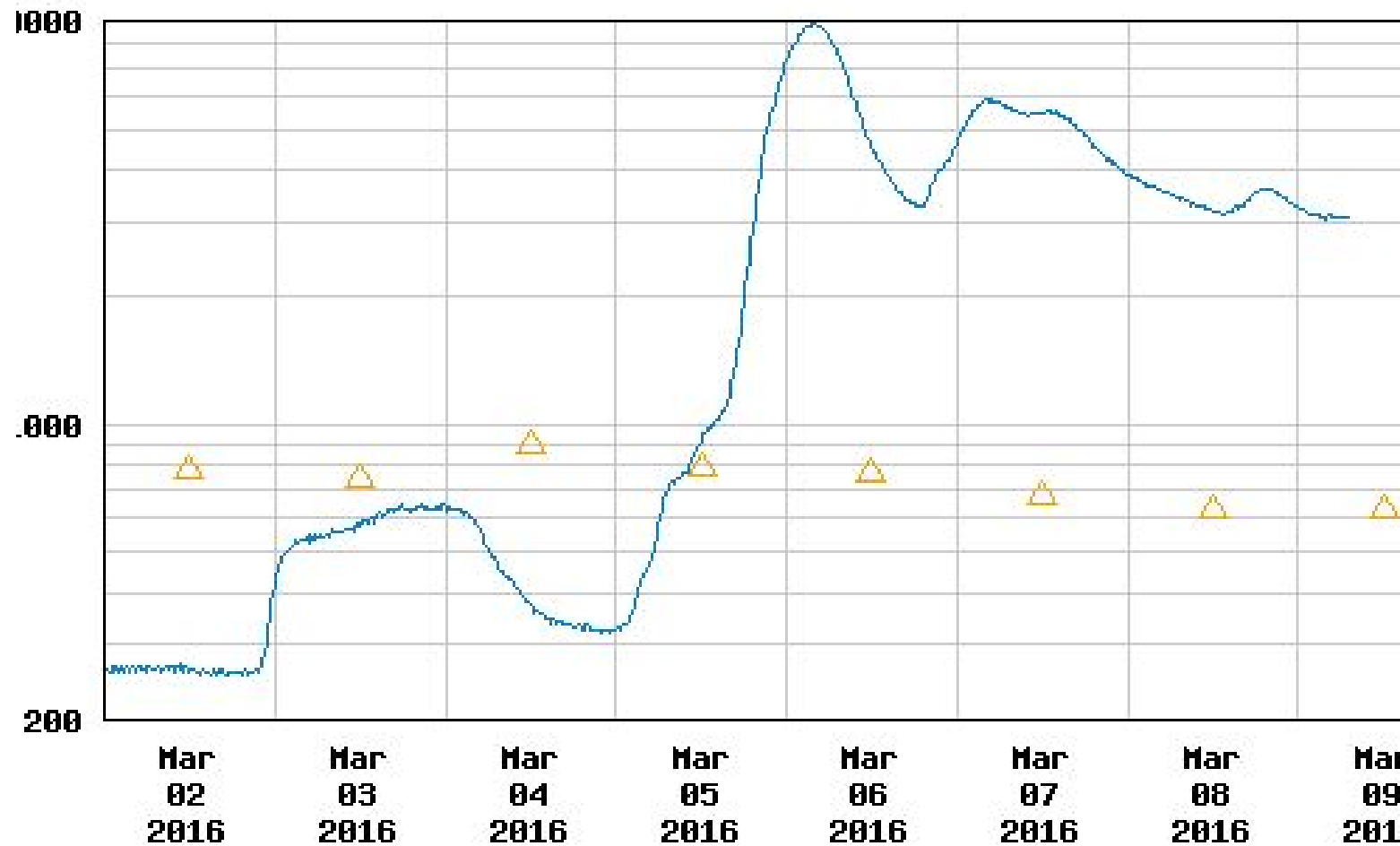
Map2: Soil Moisture (%)

[Match Map 1 View](#)



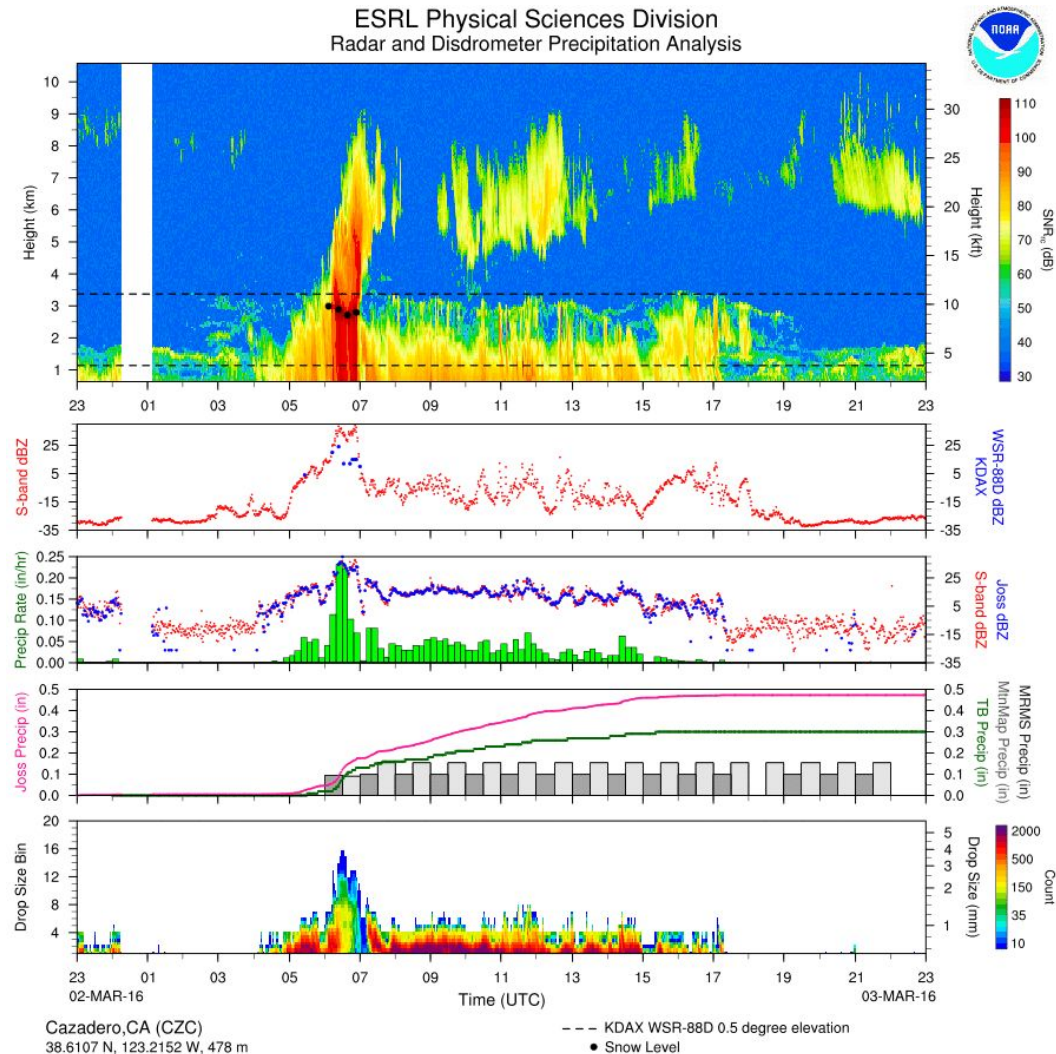
USGS Hopland Gauge

USGS 11462500 RUSSIAN R NR HOPLAND CA



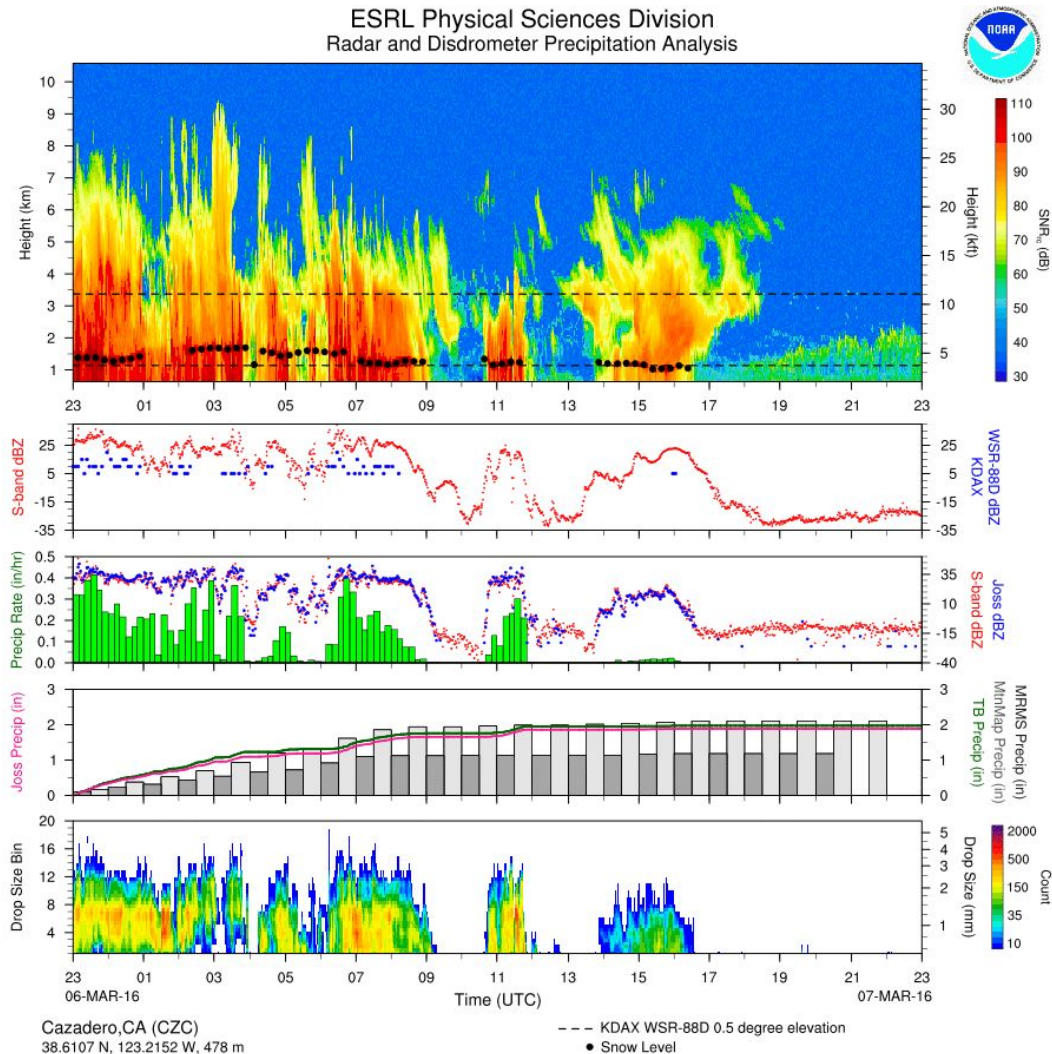
The Challenges of Orographic Precip

PSD Cazadero Site (Russian River)

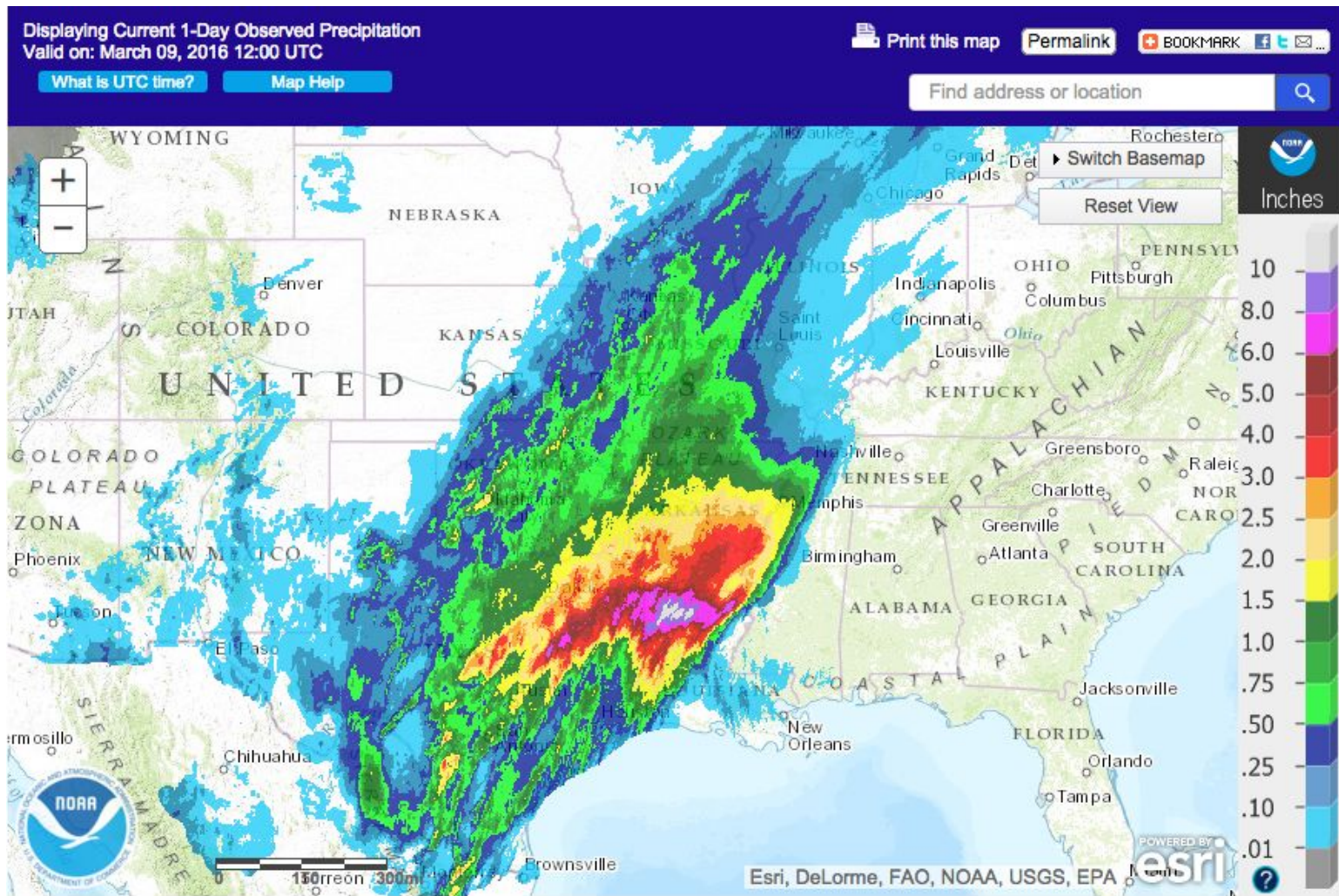


PSD

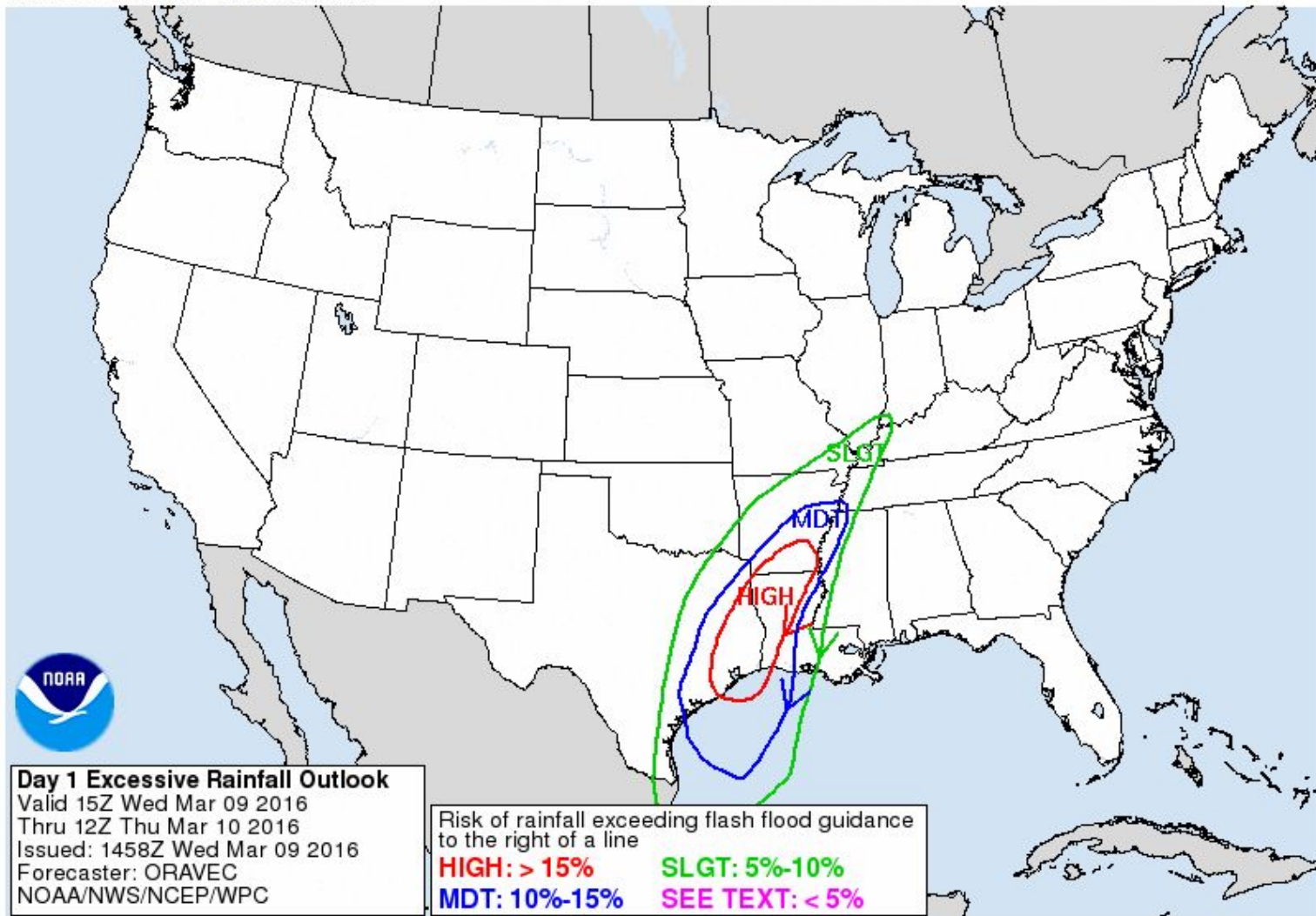
Cazadero Site (Russian River)



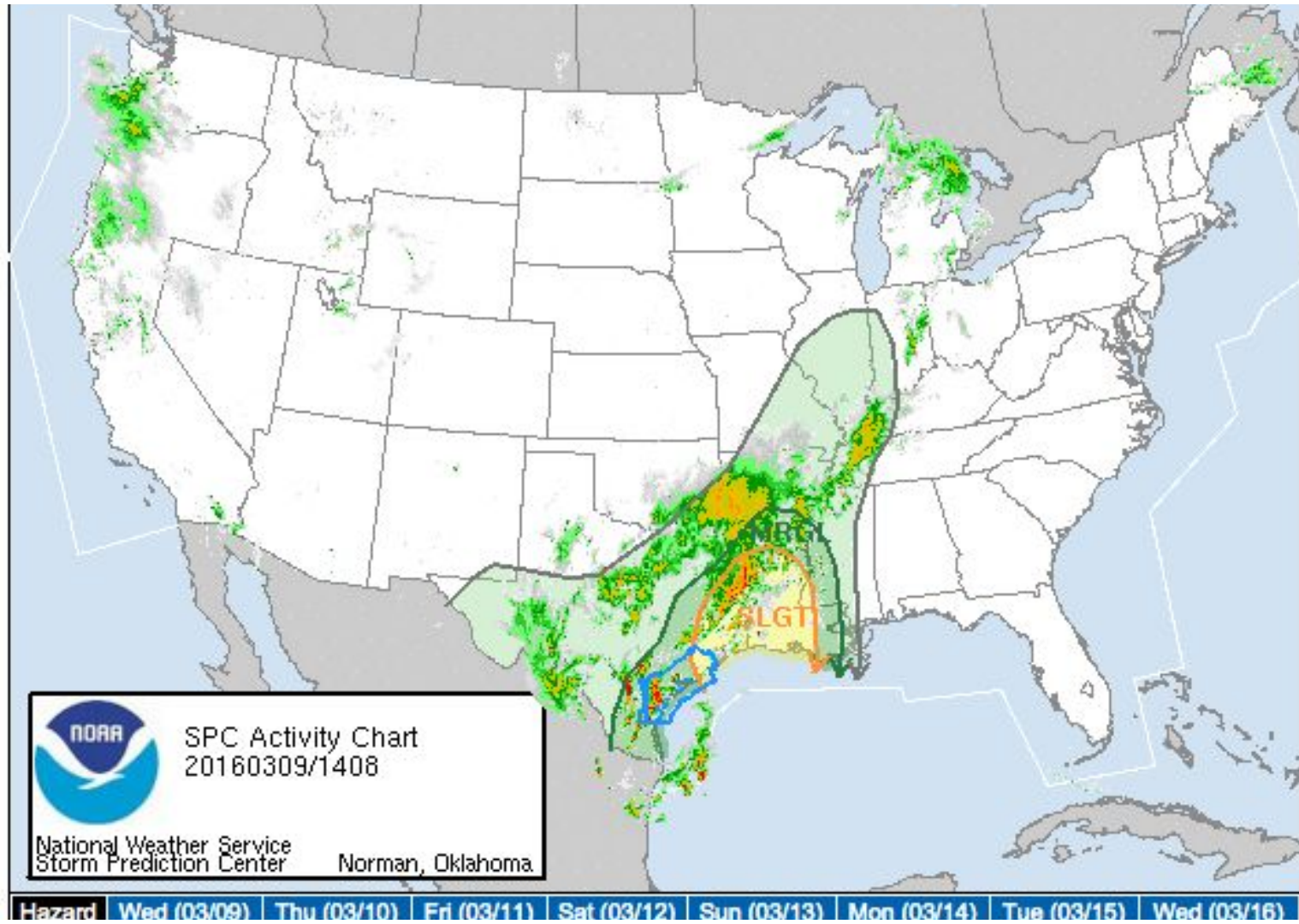
24 Hr Precip



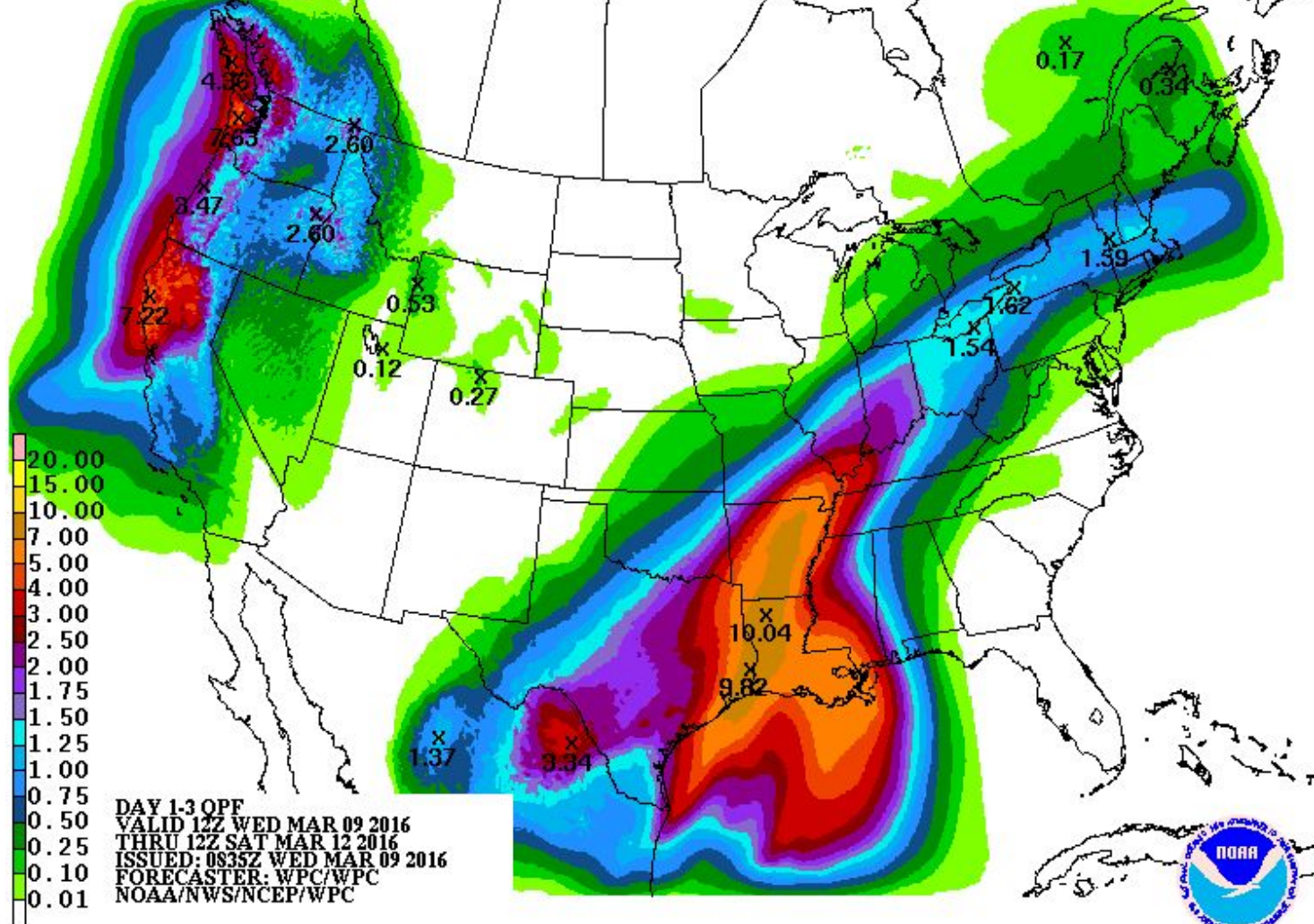
WPC Excessive Rain



SPC Severe Storm Watch



WPC: 3 Day Total QPF



SREF Total QPF: SFO

NCEP SREF Plume for Total-QPF at SFO from 20160308/09 UTC run.

Change date: 20160308 and select runtime: 03 09 15 21 then click parameter buttons & map to display forecasts.

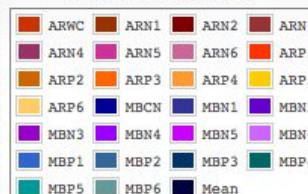
Observed TEMP, DEWP, RHUM, & WIND plotted near WFO sites only.

Parameter Selection - Hover over button for more information on that parameter. Beta plumes with violin dProg/dt charts.

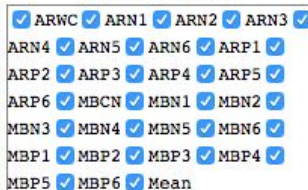
3hrly-TMP 3hrly-DWP 3h-MUCAPE 3h-MLCAPE 3h-EFFSHR 3hrly-QPF Total-QPF 3hrly-SNO Total-SNO Ptype-POP 3hr-2mRH% 3h-10mWIND

NOAA / National Weather Service / Storm Prediction Center Plume Viewer Ver. 2.0

Members Displayed



Select Members

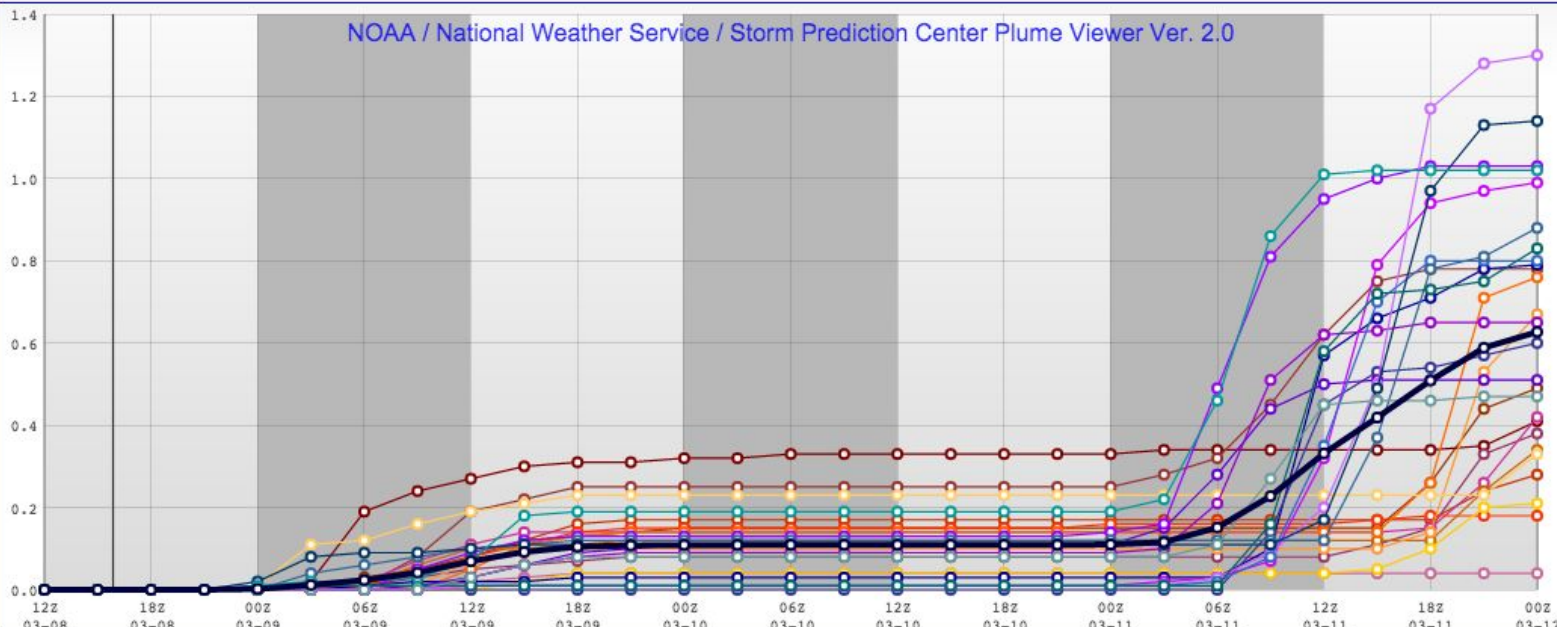


Select Model Cores

All ARW NMB

dProg/dt (Means of last 4 runs)

[Help/Credits](#) | [SREF Info](#)
[SREF Loops](#) | [SPC](#) | [Feedback](#)



Min(y) Max(y) Set Clear

SREF Total QPF: SAC

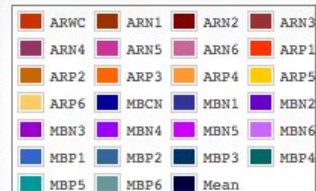
NCEP SREF Plume for Total-QPF at SAC from 20160308/09 UTC run.
Change date: 20160308 and select runtime: 03 09 15 21 then click parameter buttons & map to display forecasts.
Observed TEMP, DEWP, RHUM, & WIND plotted near WFO sites only.

Parameter Selection - Hover over button for more information on that parameter. Beta plumes with violin dProg/dt charts.

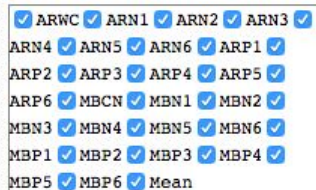
3hrly-TMP 3hrly-DWP 3h-MUCAPE 3h-MLCAPE 3h-EFFSHR 3hrly-QPF Total-QPF 3hrly-SNO Total-SNO Ptype-POP 3hr-2mRH% 3h-10mWIND

NOAA / National Weather Service / Storm Prediction Center Plume Viewer Ver. 2.0

Members Displayed



Select Members

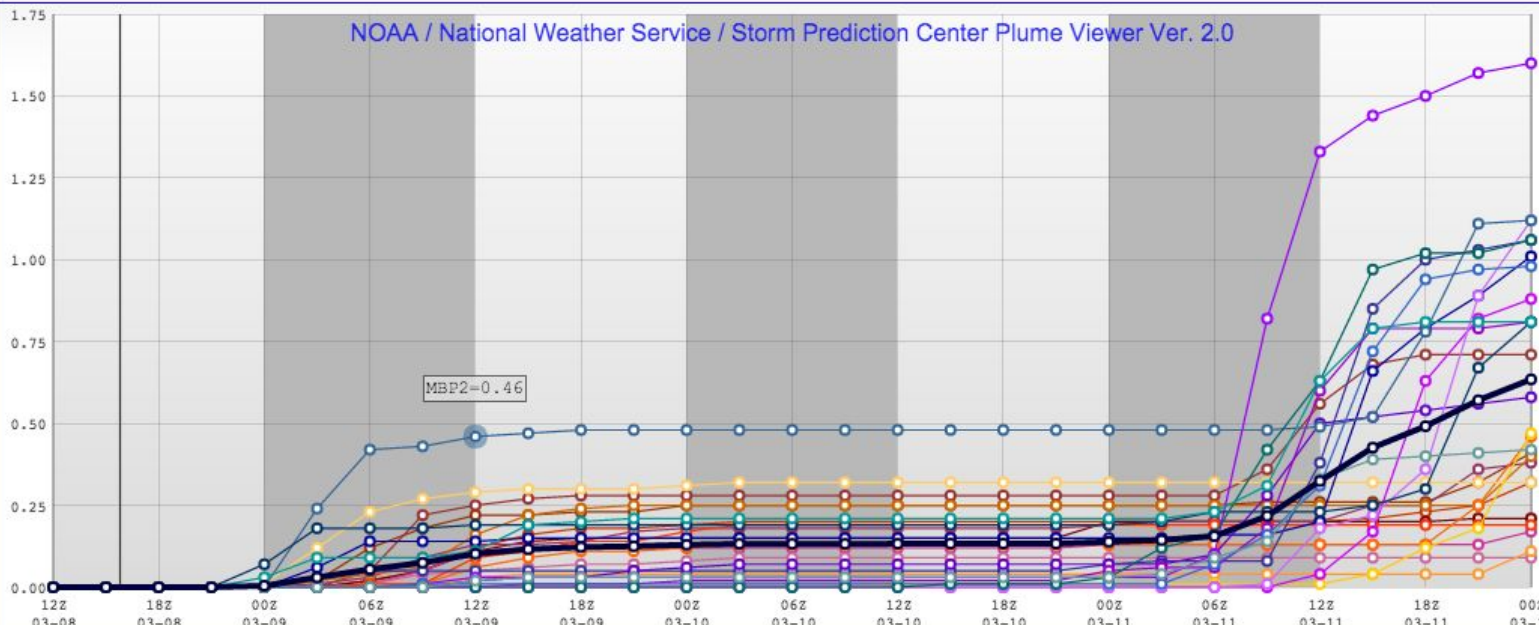


Select Model Cores

All ARW NMB

dProg/dt (Means of last 4 runs)

[Help/Credits](#) | [SREF Info](#)
[SREF Loops](#) | [SPC](#) | [Feedback](#)



Min(y) Max(y) Set Clear