

Final ENRR Briefing

Summary of Key Briefing Points

11:00-12:00 MST Thu, Mar 10, 2016

Current Conditions as of Thu 12Z-15Z Mar 10

Tropics and Mid-latitudes

Over the Tropical Pacific:

- Active convection in MCS/clusters draped across FD
- Scattered activity west of the dateline

Tropical Outlook

- Continued activity forecast across FD but most intensity forecast to be west of Dateline
- Reemergence of SPCZ over next few days?

Midlatitude Conditions/Outlook

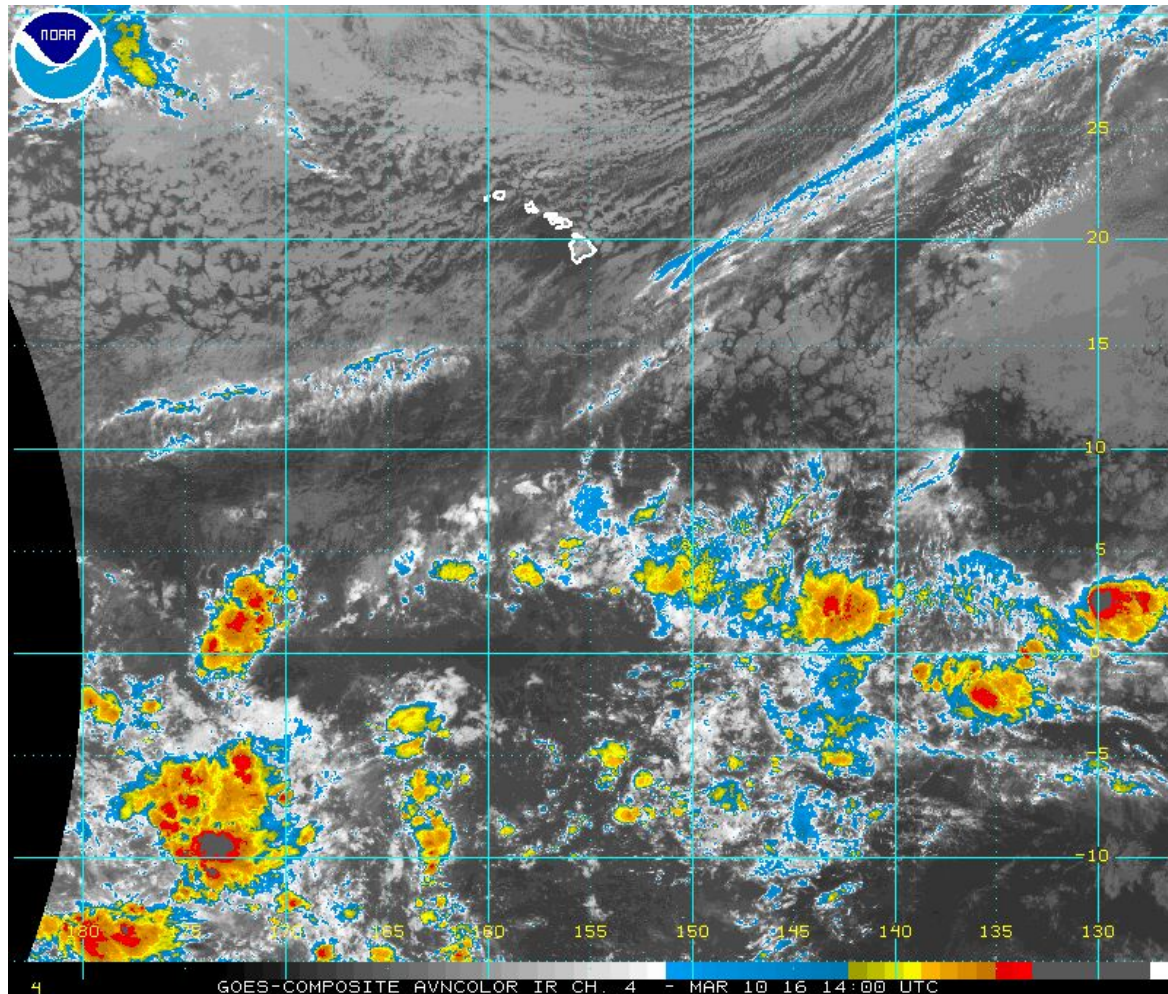
Short Term:

- Front moving across N. CA this morning bringing up to 2+ in rain in coastal mts
- Trailing shortwave will move through later tonight, reorienting AR to bring potentially larger amounts in SC mts and Mt Tam
- Lots of uncertainty about magnitude and location of largest precip
- Low continues to pump copious moisture into LA - another 1+” of rain forecast today on top of 15+” in some areas last 48 hours

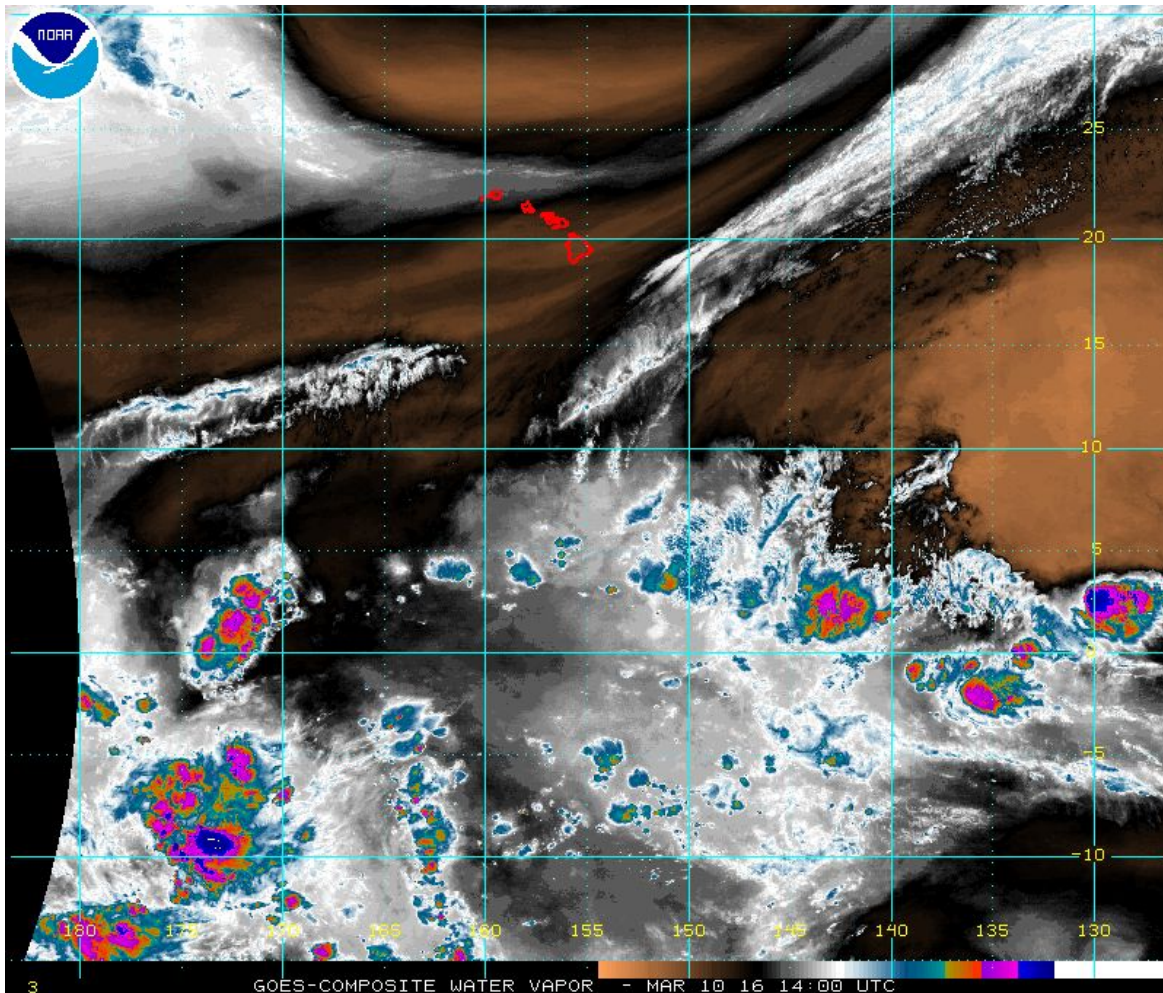
Medium - Long Term:

-

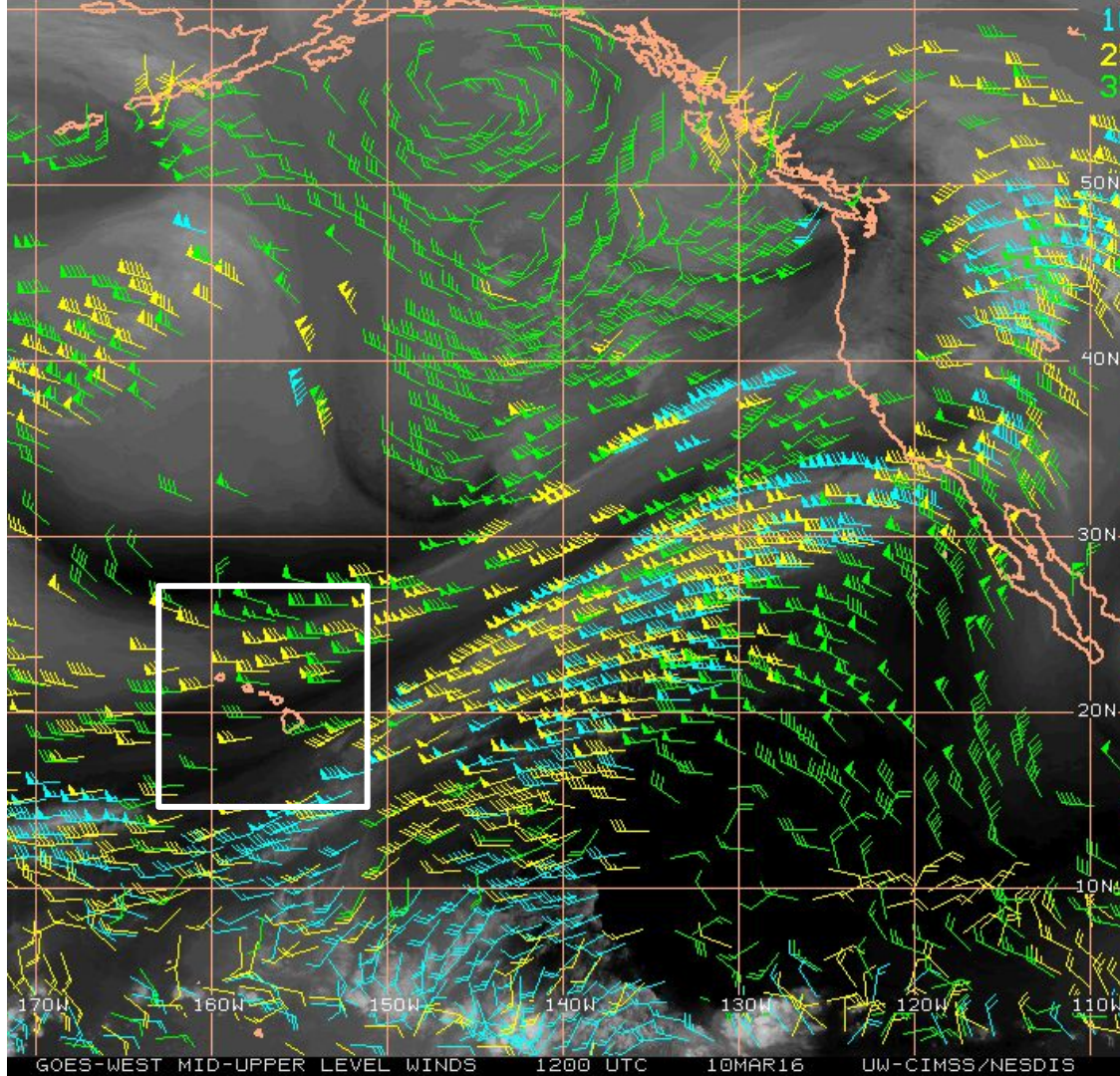
Thu 14Z



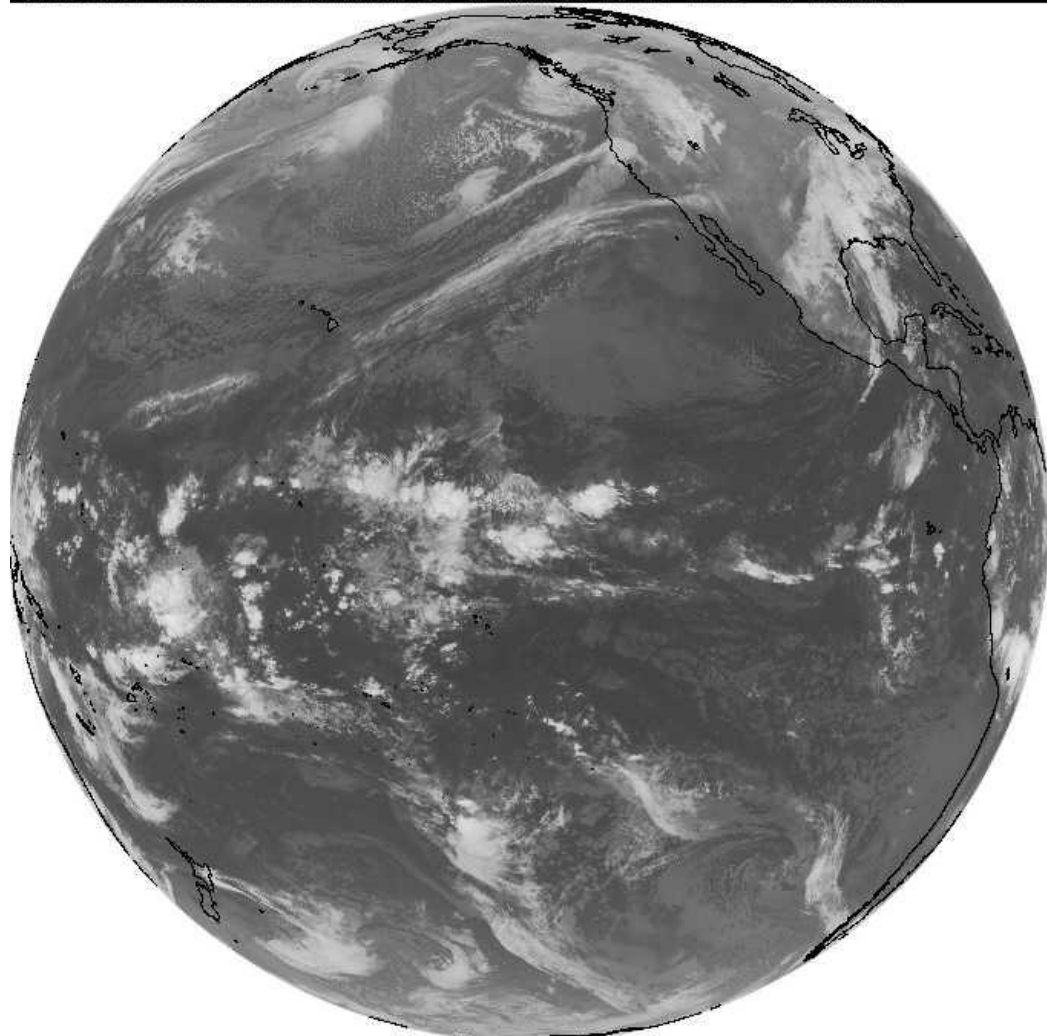
Thu 14Z



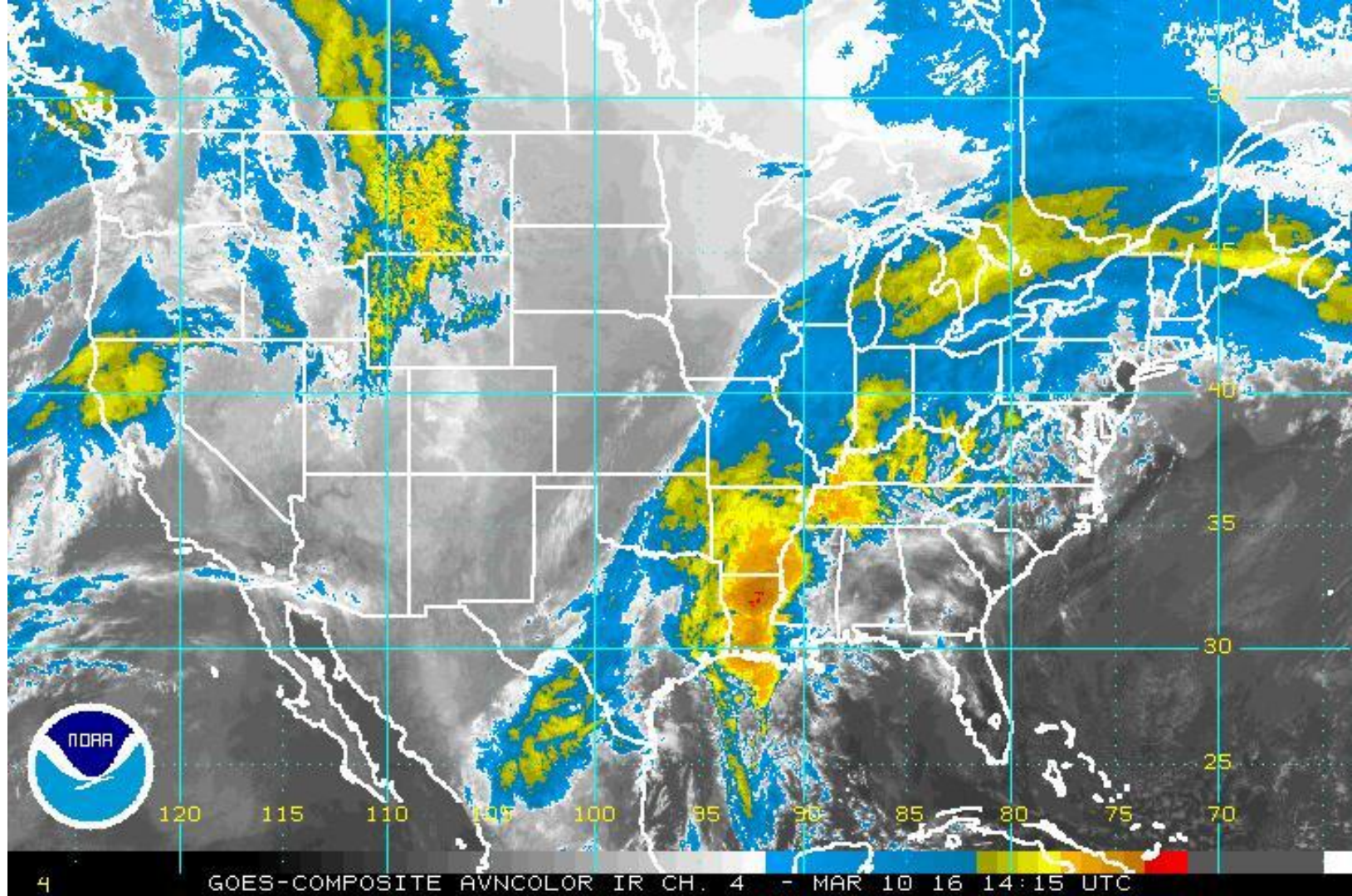
10 Mar 12Z Satellite Winds



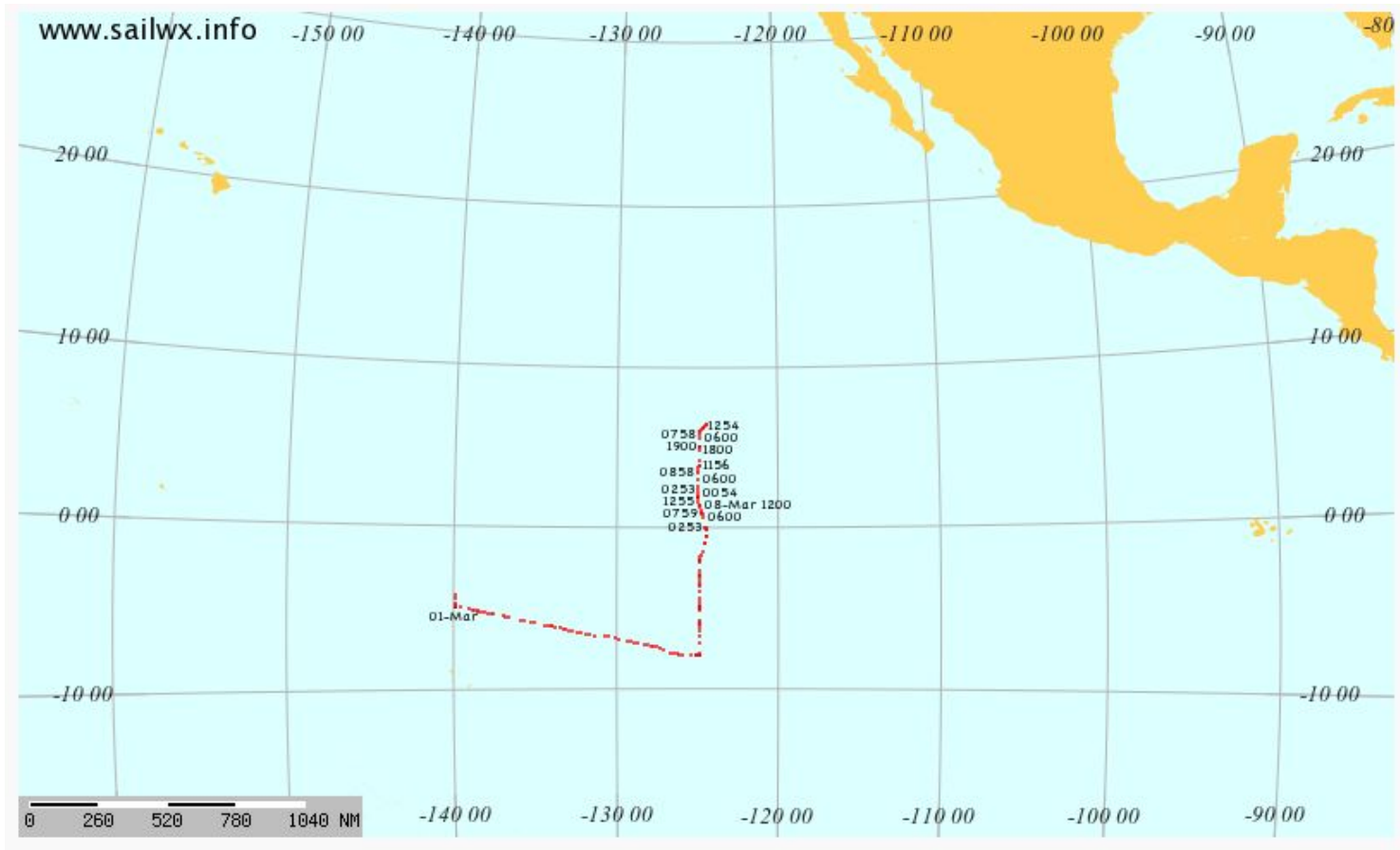
Thu 12Z



10
March
14:15z:
GOES
IR

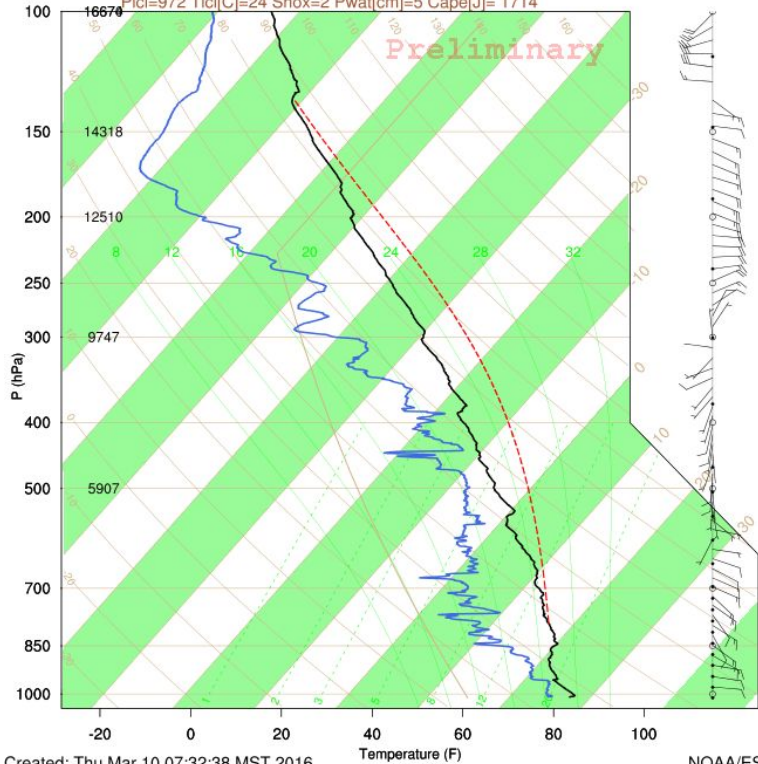


10
March
13z:
RHB

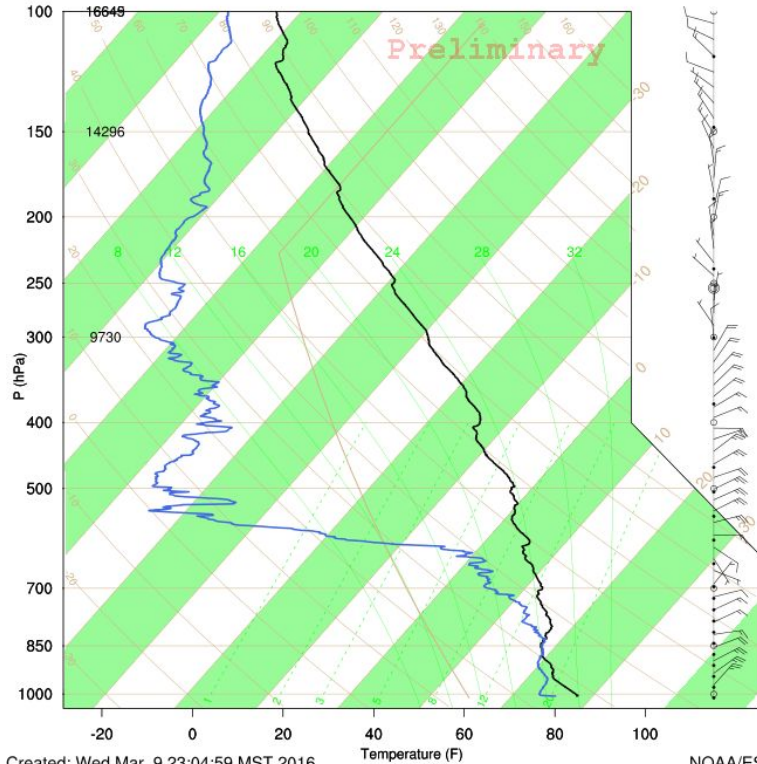


Kiritimati Is: 03/10/2016 1119Z 2.01N 157.40W

Ptcl=972 Tlcl[C]=24 Shox=2 Pwat[cm]=5 Capel[J]= 1714

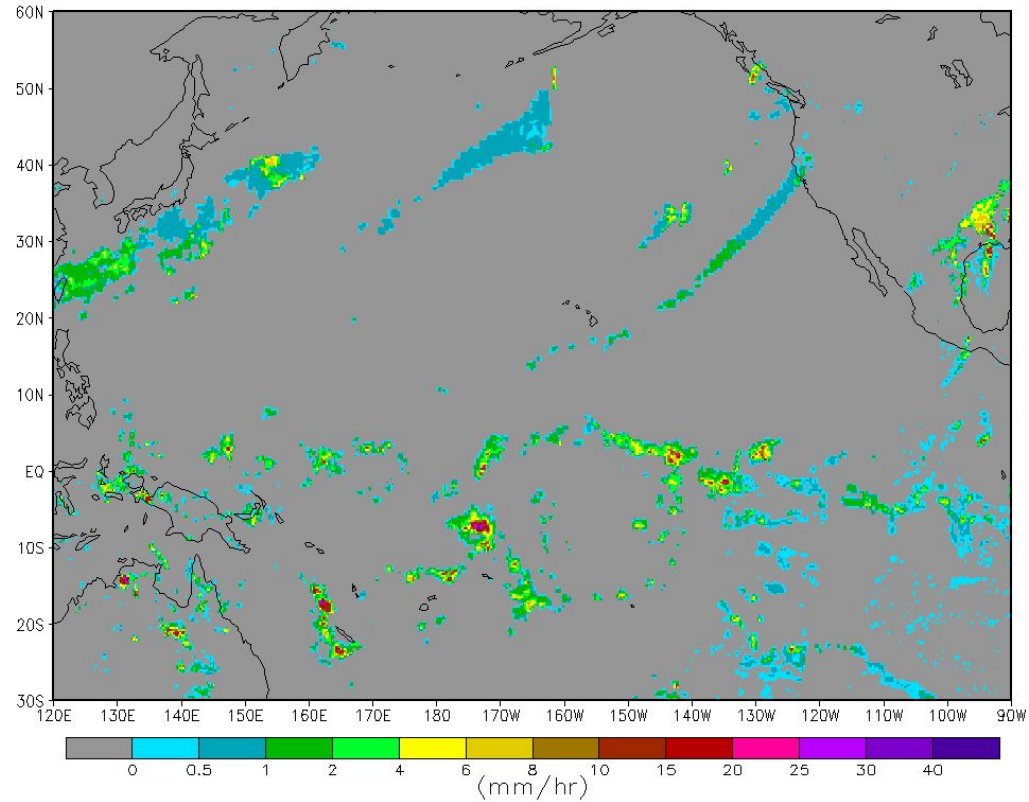


Ronald H. Brown: 03/10/2016 0210Z (5.08N,124.97W)



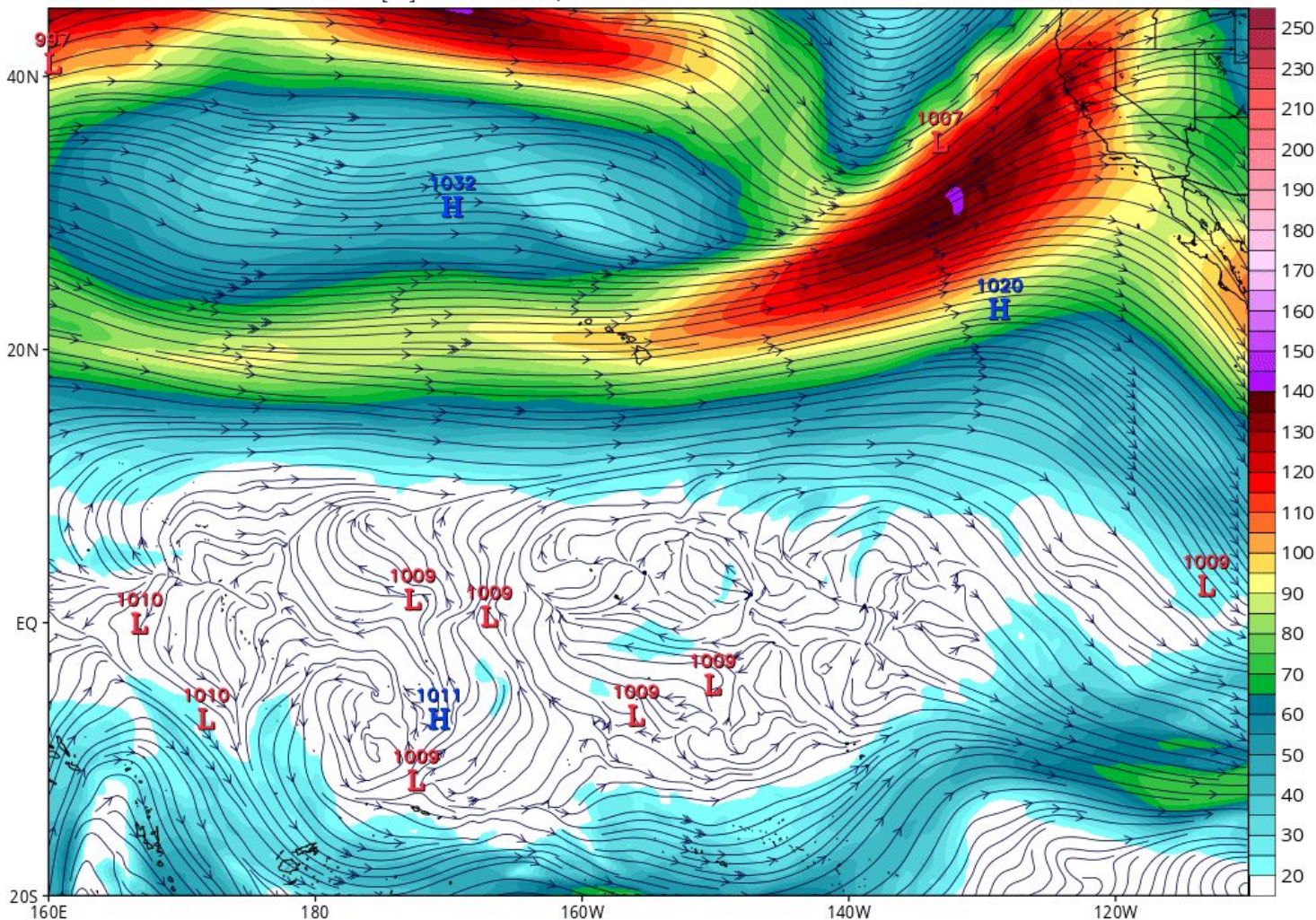
Thu 12:30Z CMORPH Rainfall

CMORPH_RAW_RT @ 2016-Mar-10 12:30Z

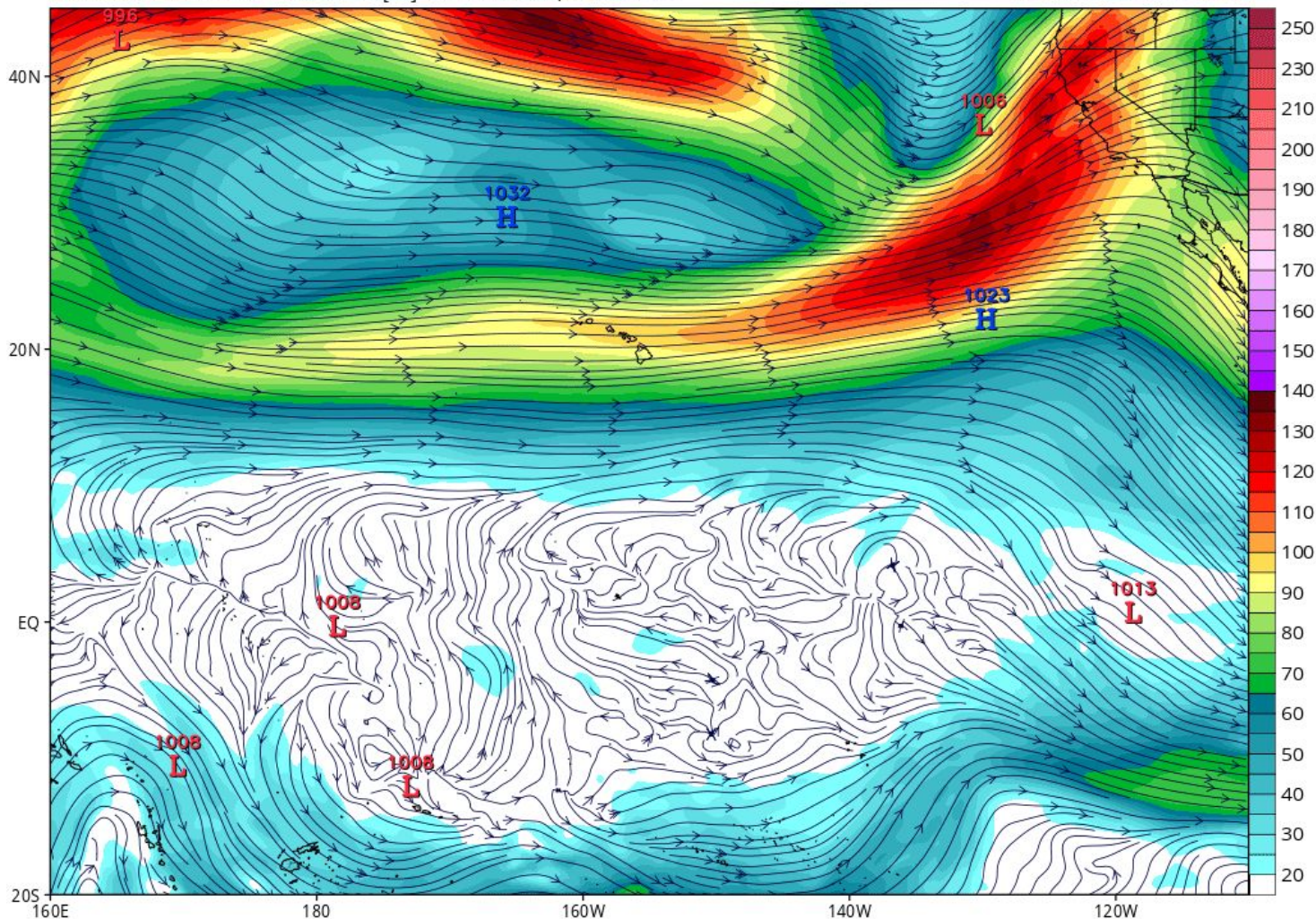


GFS 06Z IVT, IWV, Precip Forecasts

GFS 06Z 200 mb Forecast Valid 00Z Fri



GFS 06Z 200 mb Forecast Valid 06Z FRI

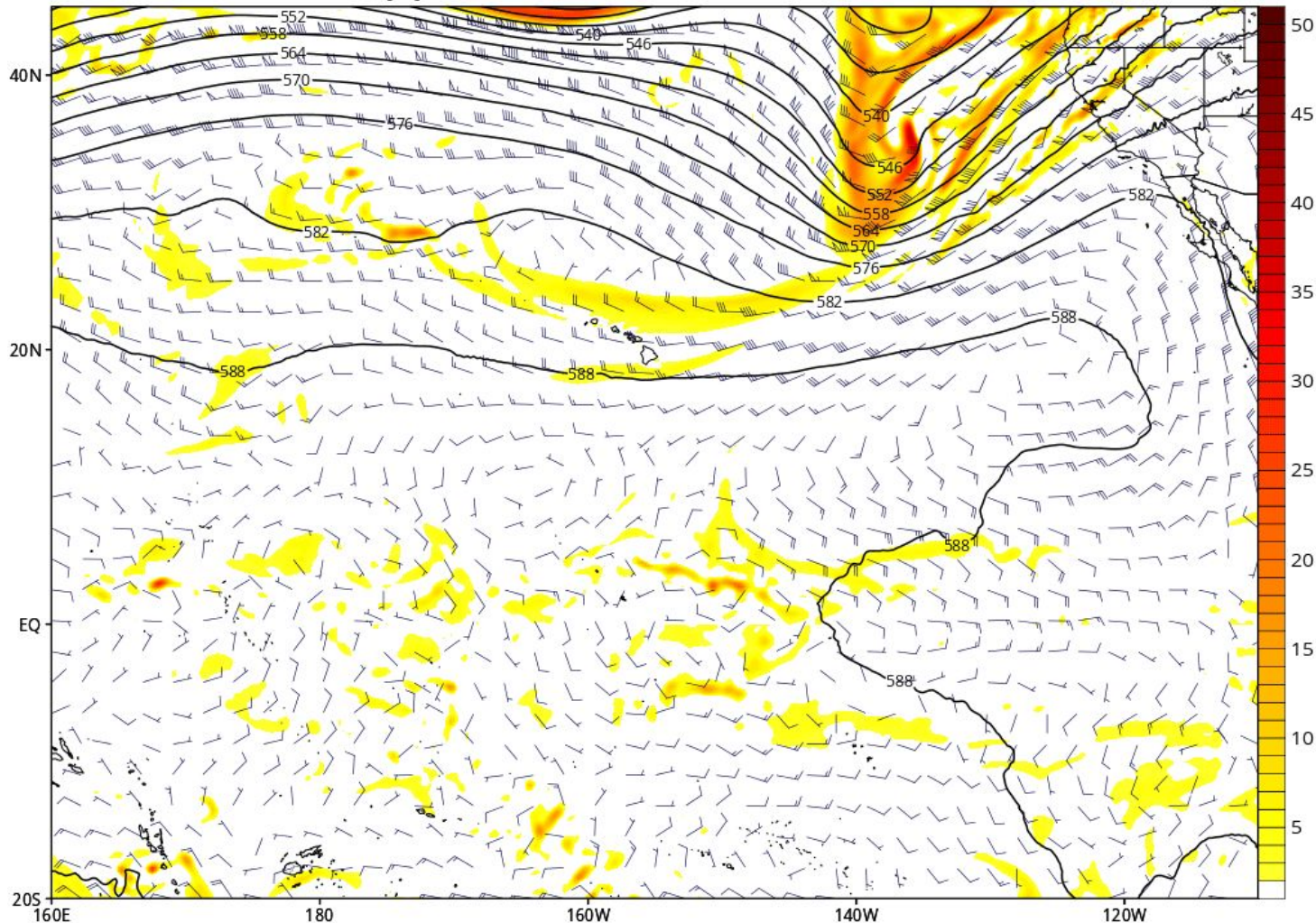


GFS 500mb Geopotential Height (dam), Cyclonic Vorticity (10^{-5} s^{-1} , shaded), and Wind (kt)

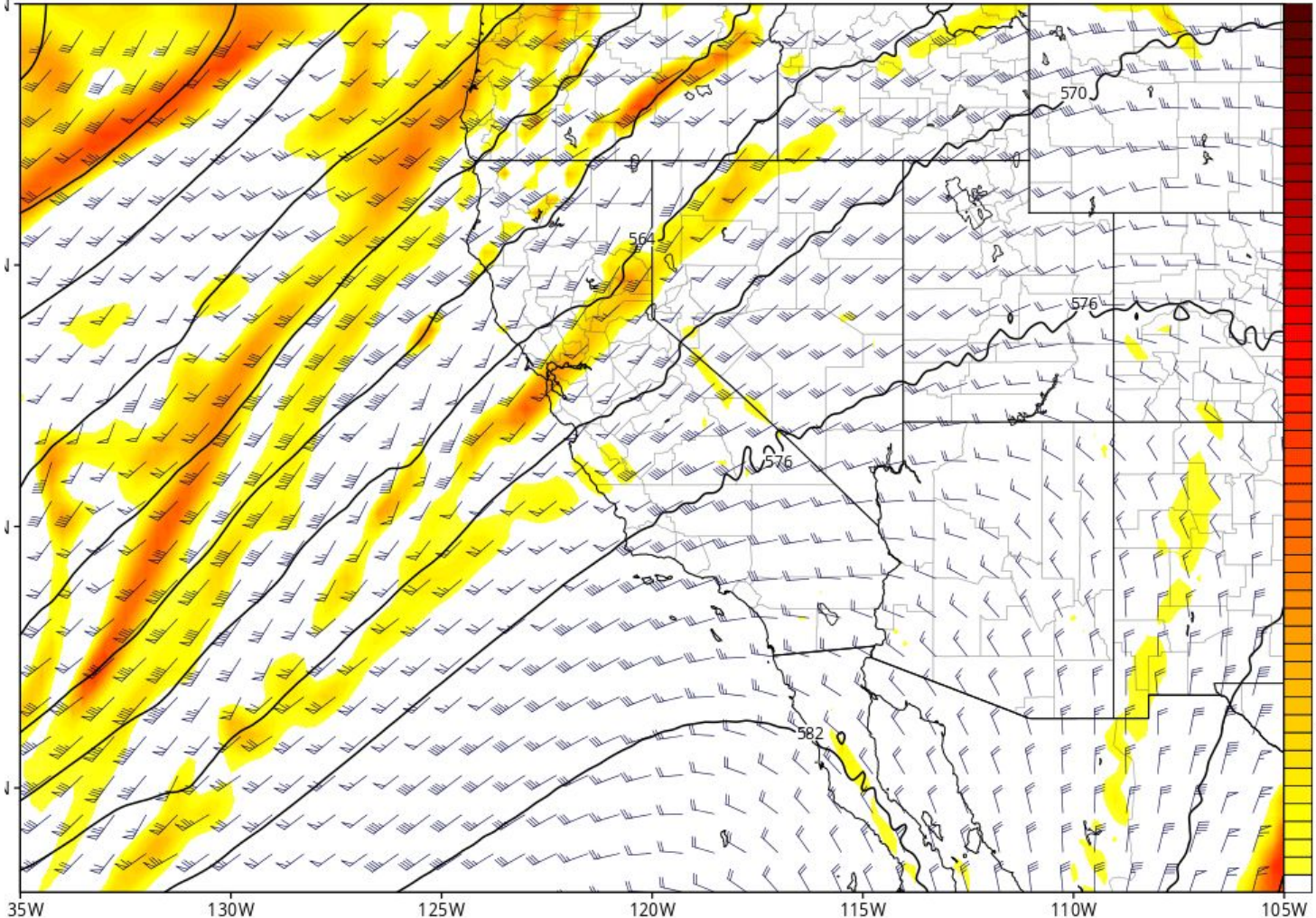
Init: 06z Mar 10 2016 Forecast Hour: [18] valid at 00z Fri, Mar 11 2016

TROPICALTIDBITS.COM

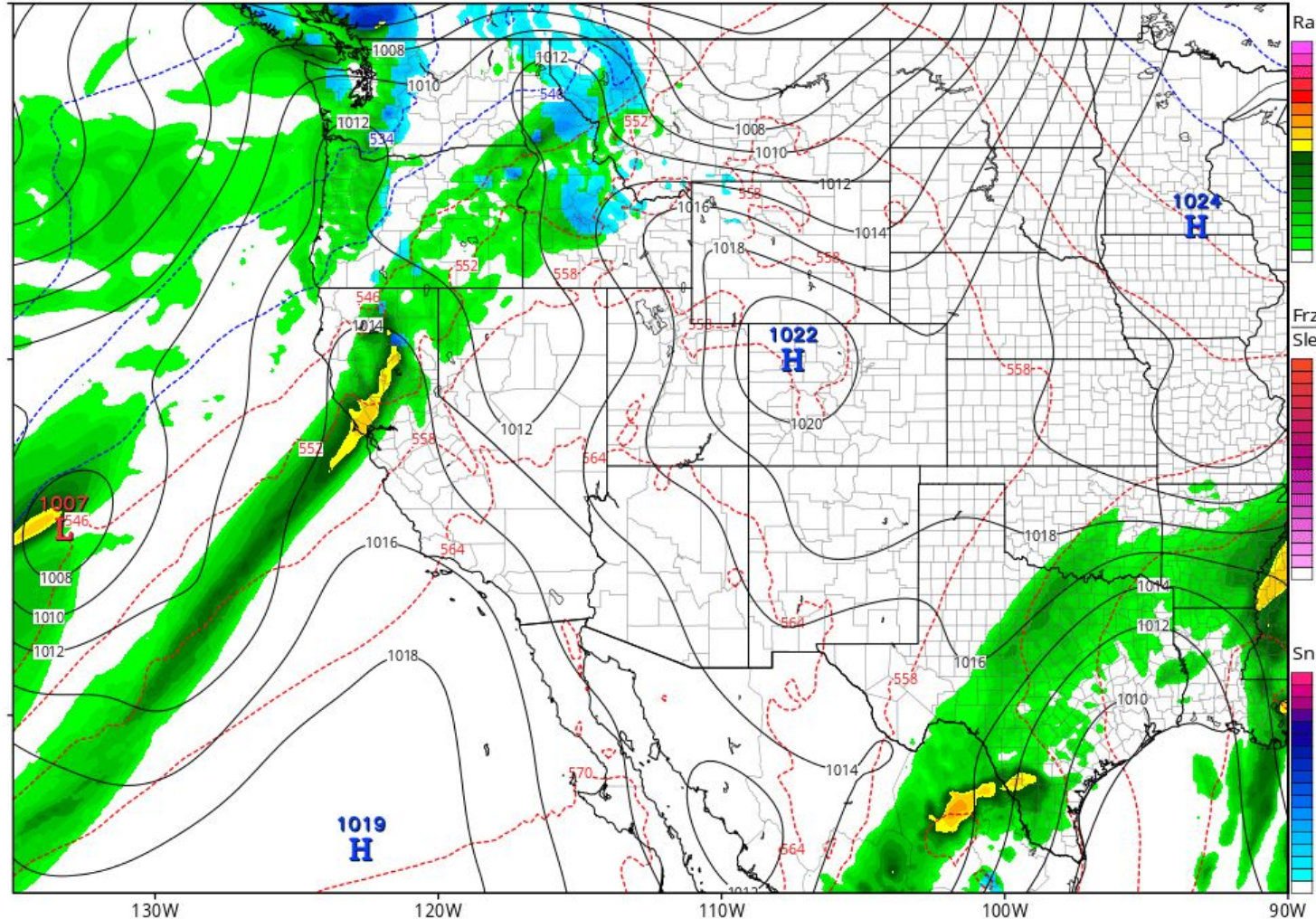
GFS 06Z
500 mb
Forecast
Valid 00Z
FRI



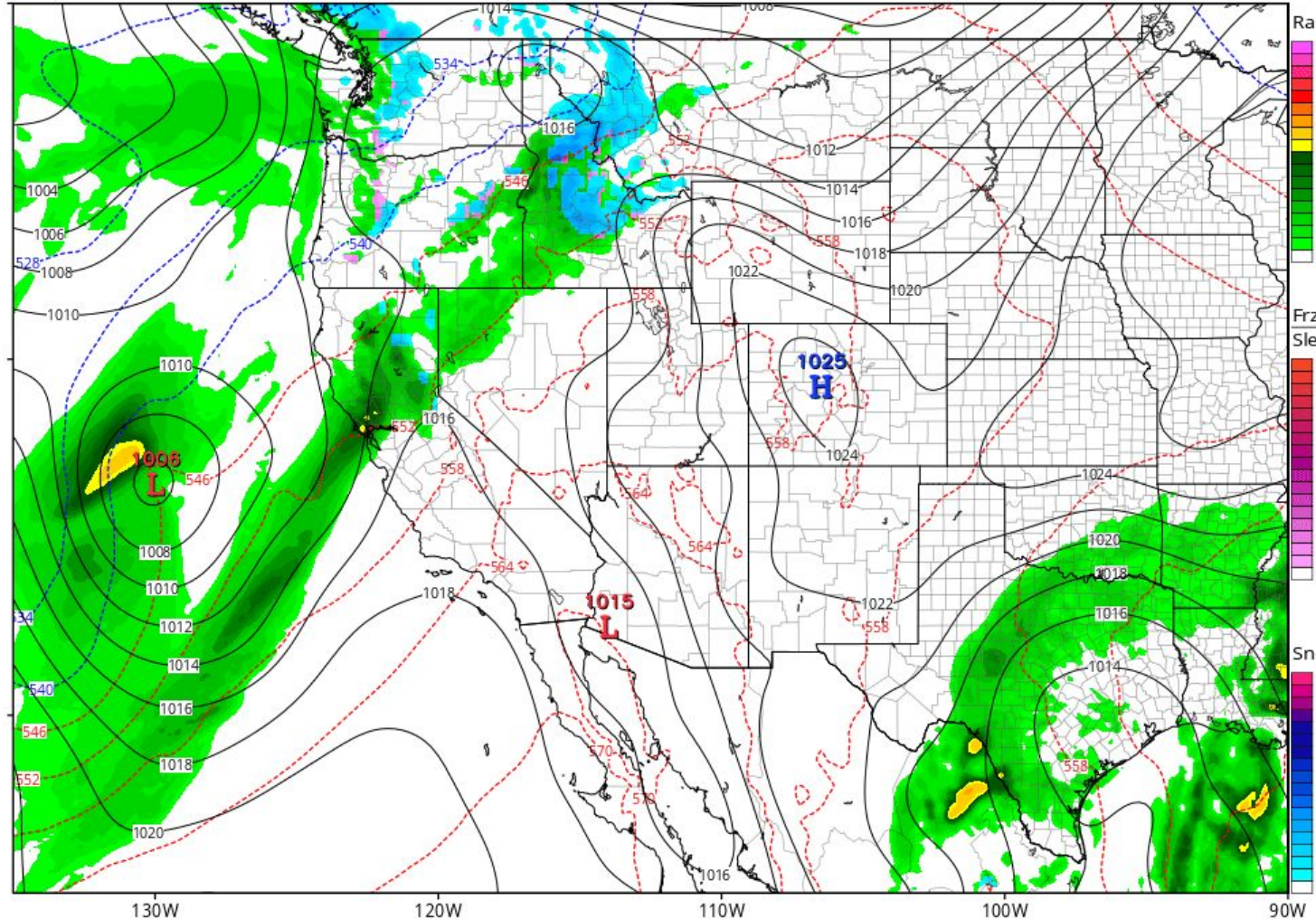
GFS 06Z
500 mb
Forecast
Valid 00Z
FRI



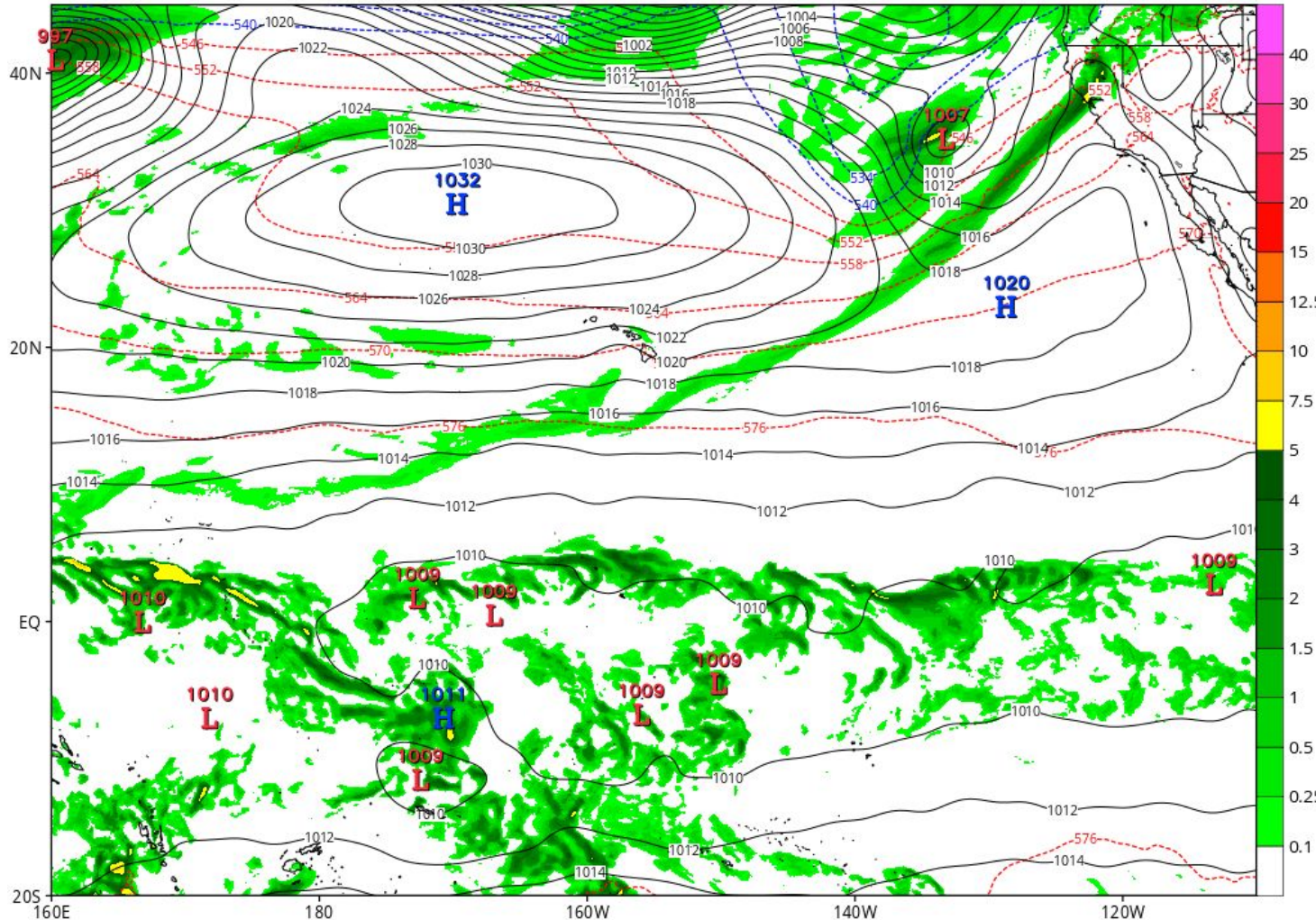
GFS 06Z
Precip
Forecast
Valid 00Z
FRI



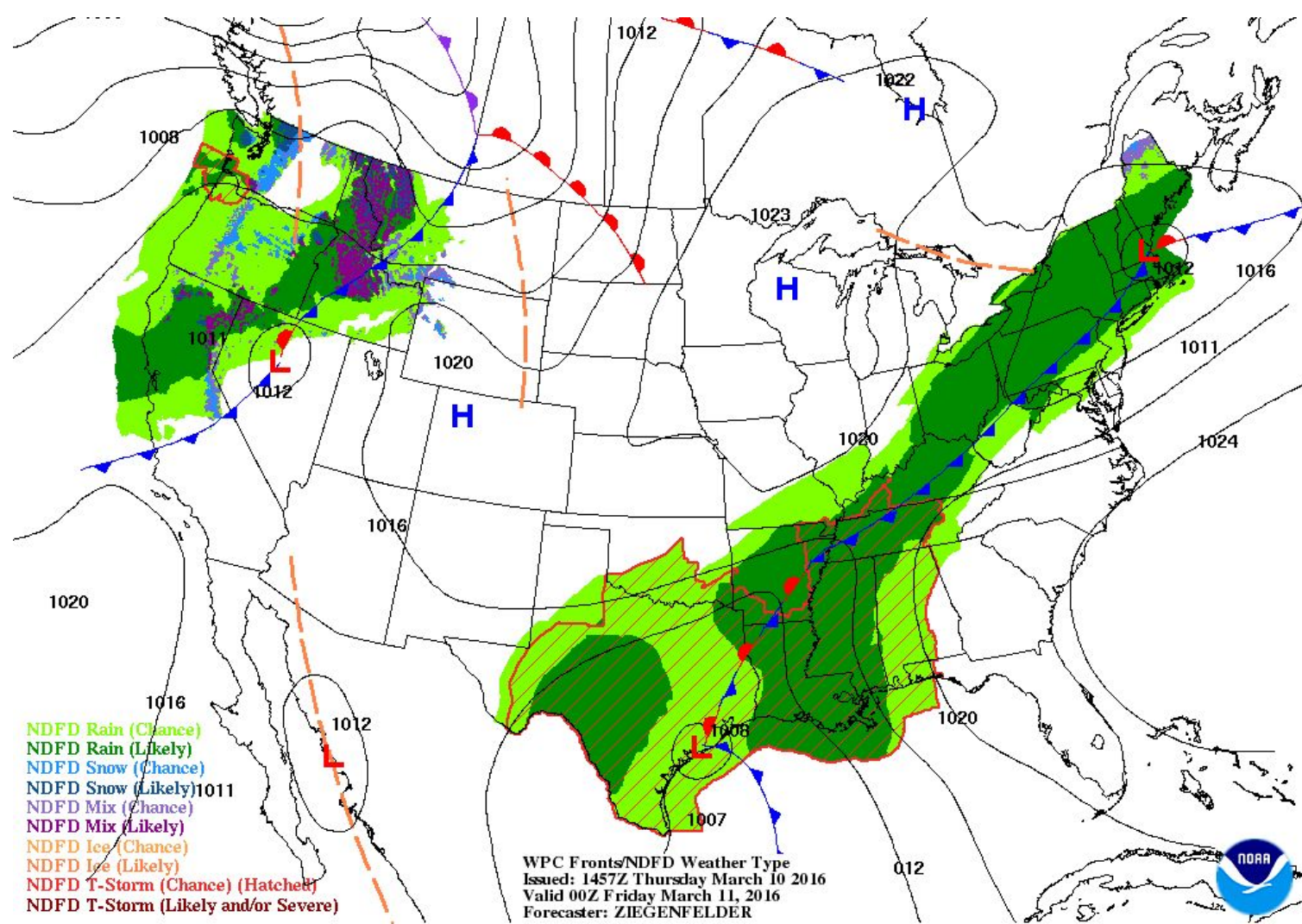
GFS 06Z Precip Forecast Valid 06Z FRI



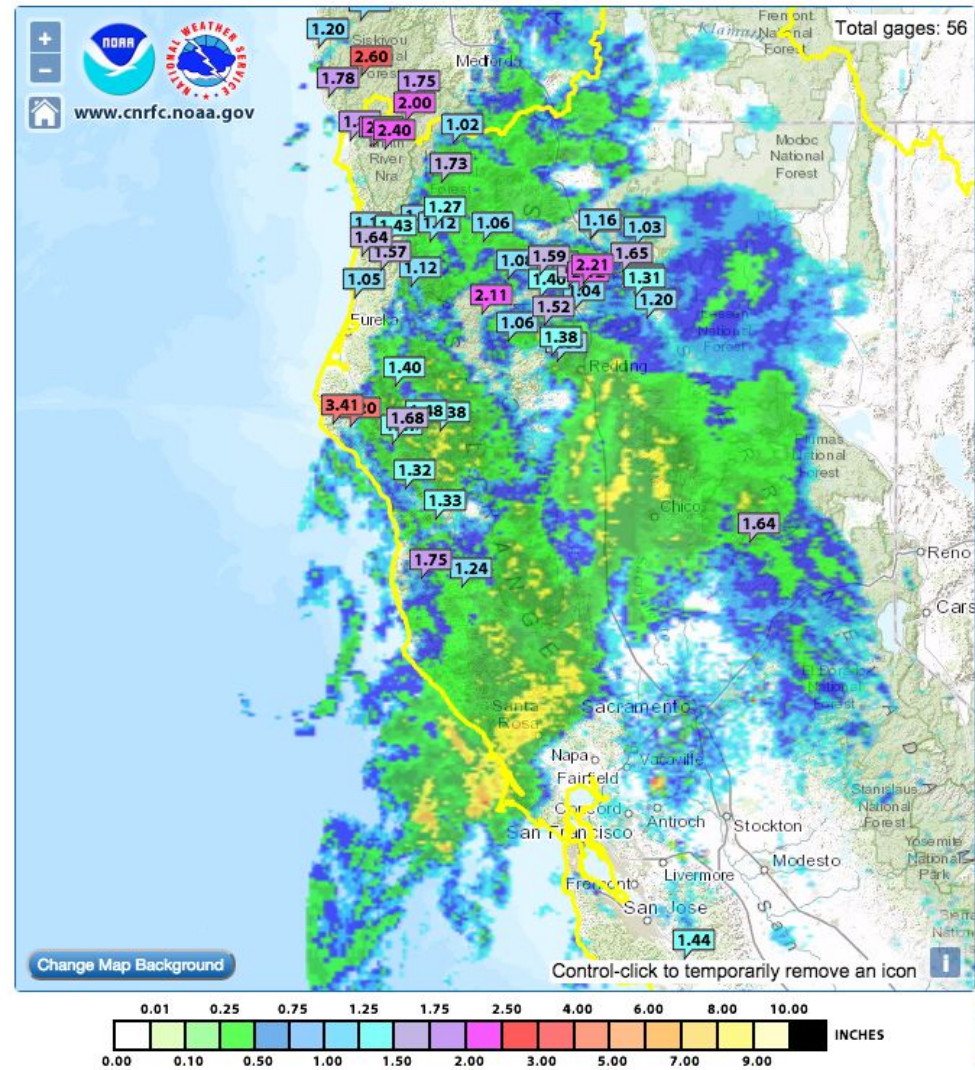
GFS 06Z
Precip
Forecast
Valid 00Z
FRI



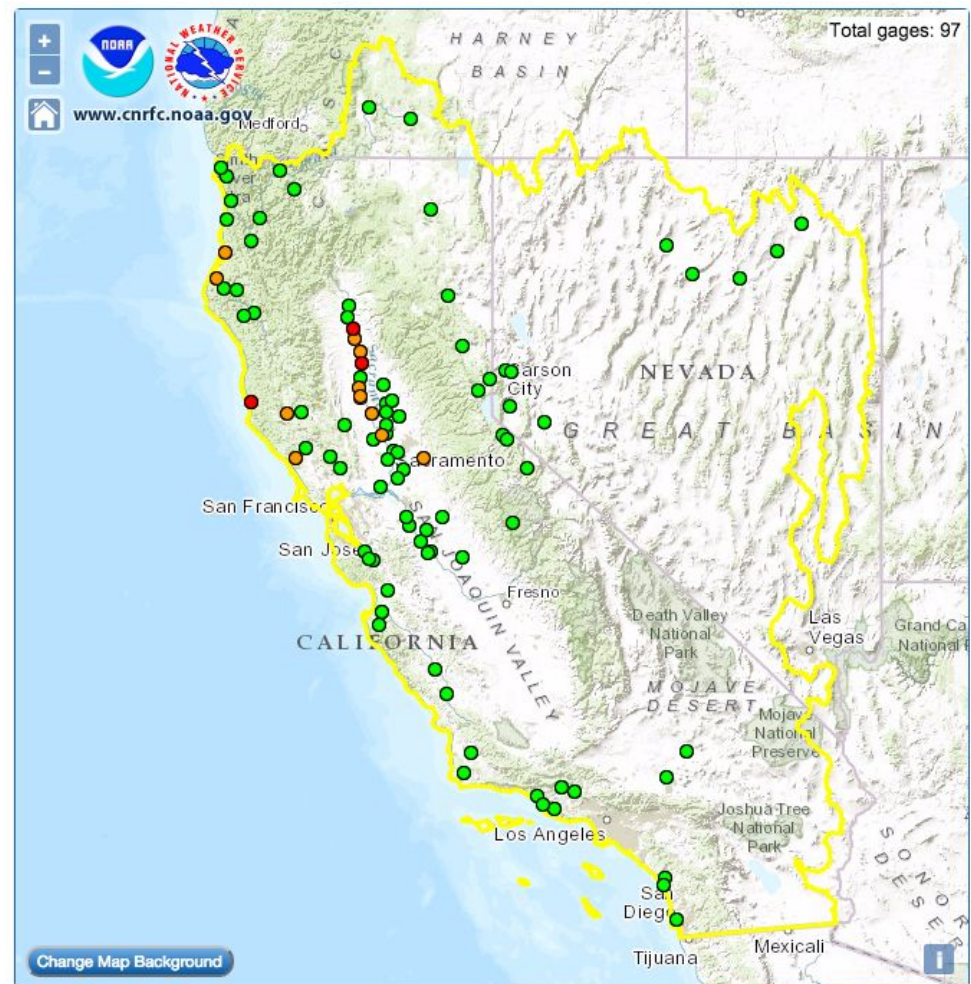
WPC Surface Forecast Valid 00Z FRI



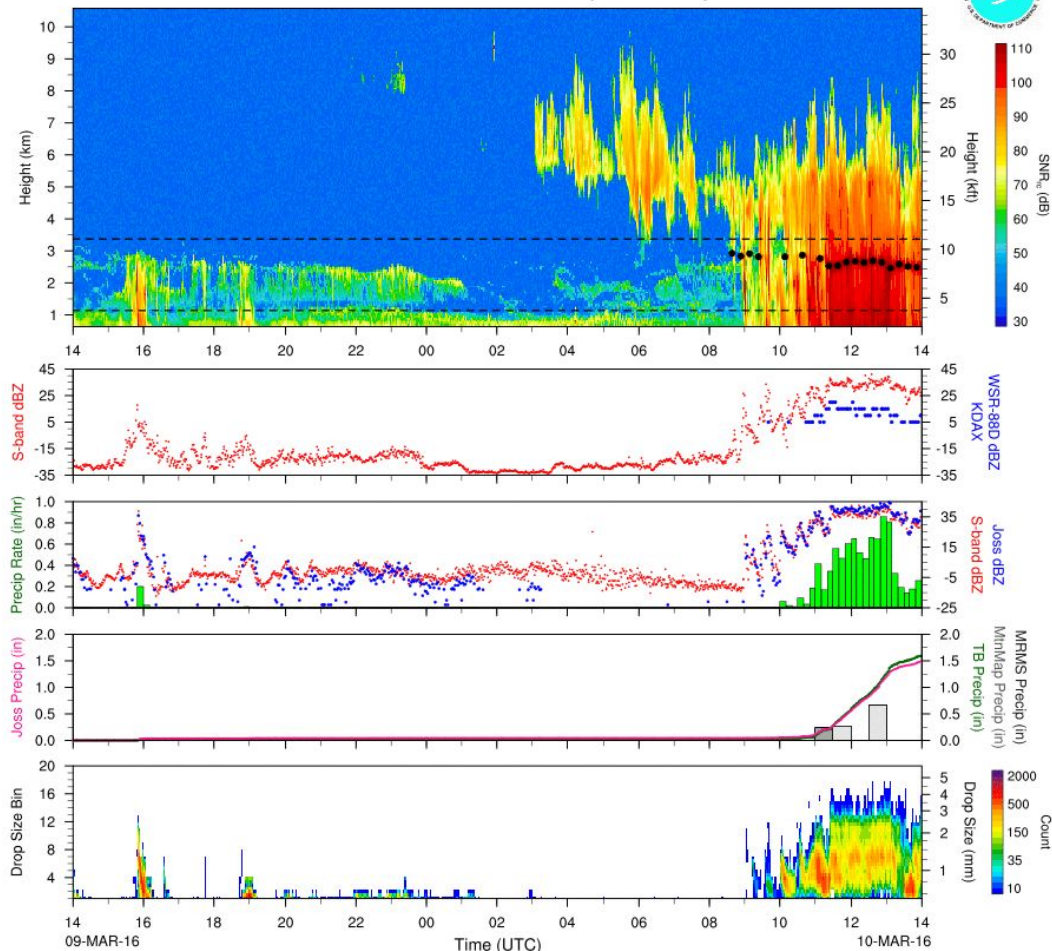
CNRFC 24 HR QPE (> 1.0")



CNRFC River Forecast



PSD Cazadero Site (Russian River)

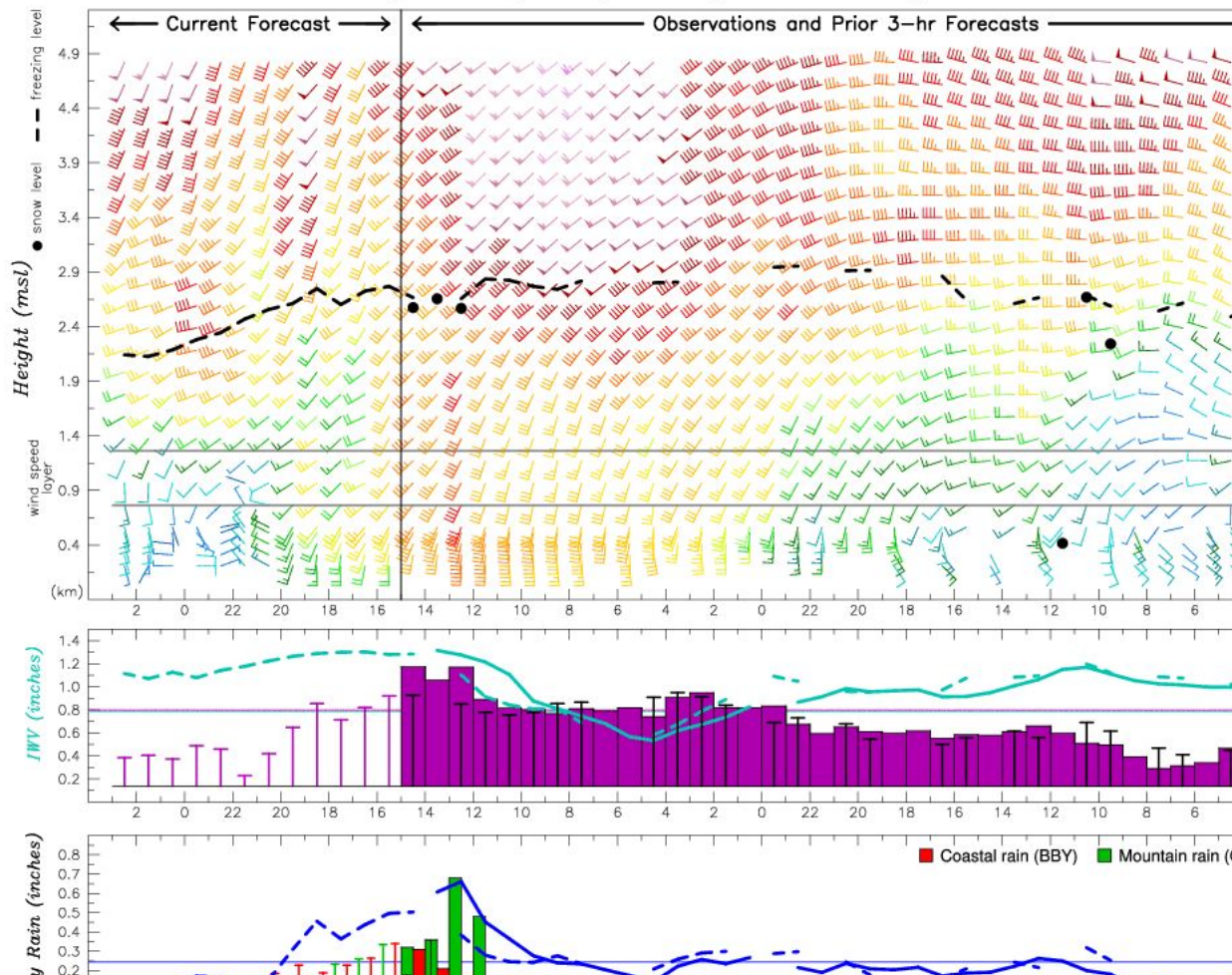


Cazadero, CA (CZC)
38.6107 N, 123.2152 W, 478 m

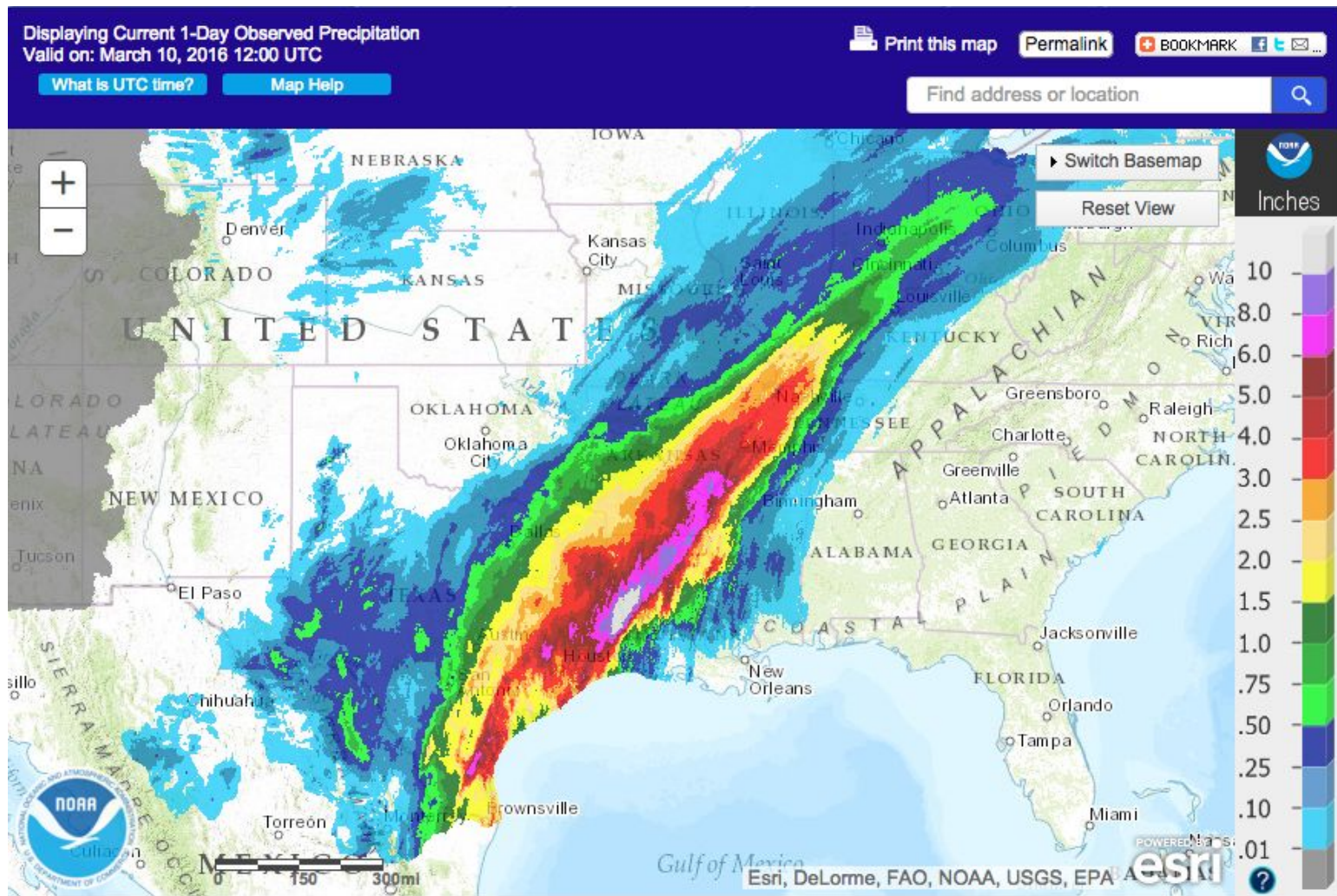
-- KDX WSR-88D 0.5 degree elevation
● Snow Level

PSD Bodega Bay (Russian River)

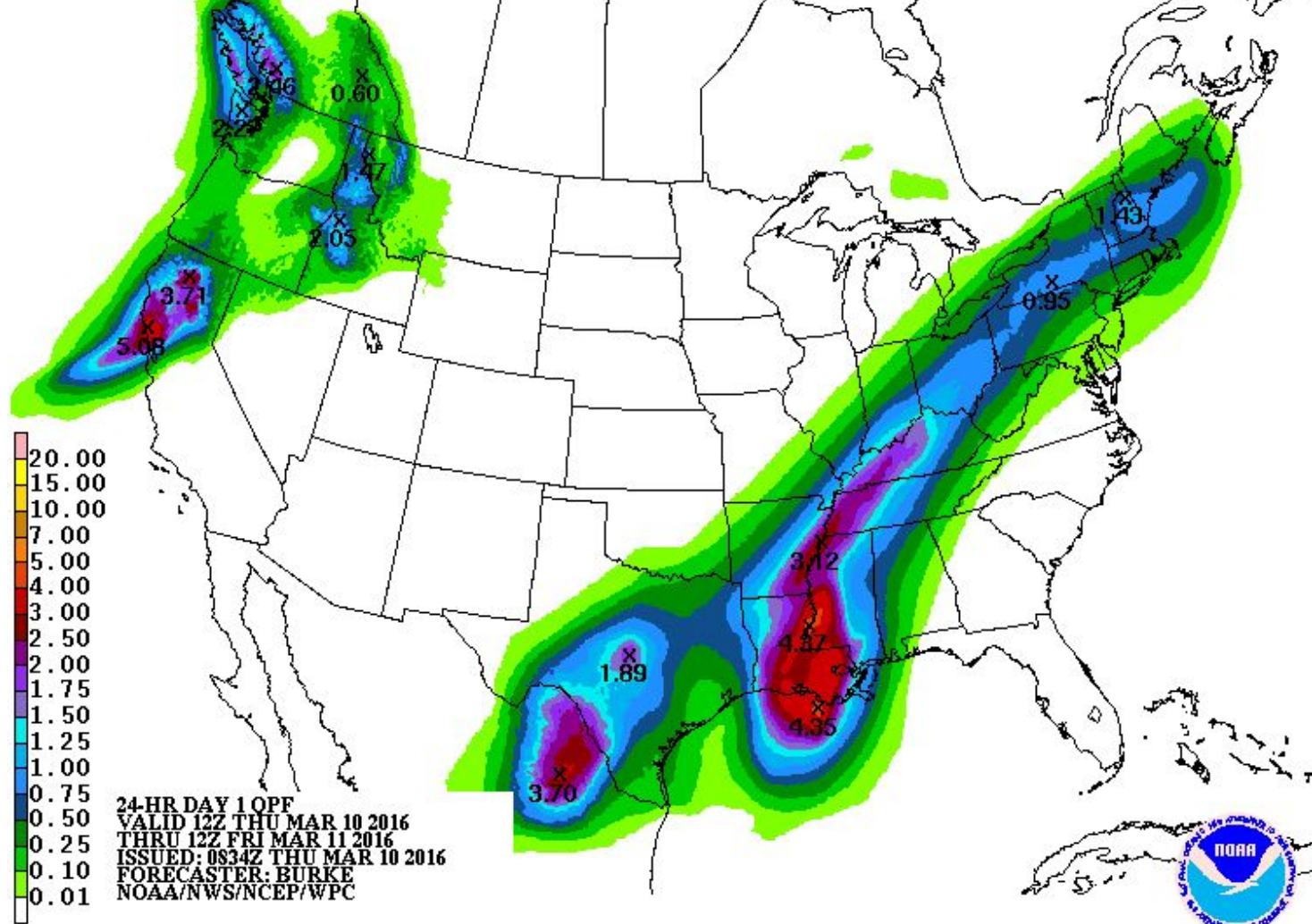
ESRL Physical Sciences Division
Coastal Atmospheric River Monitoring and Early Warning System
HRRR Experimental forecast provided by the ESRL Global Systems Division



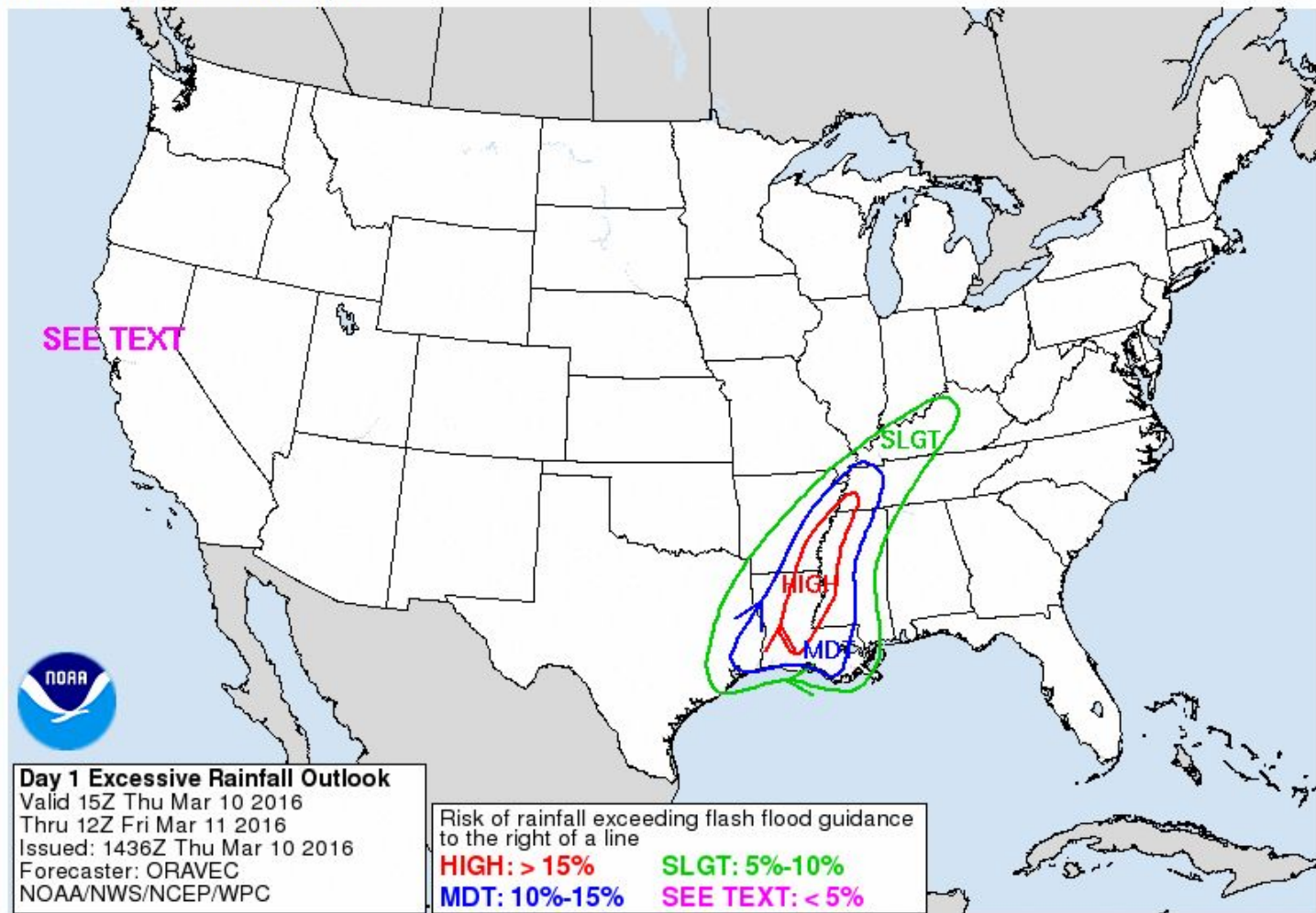
AHPS 24 Hr Precip



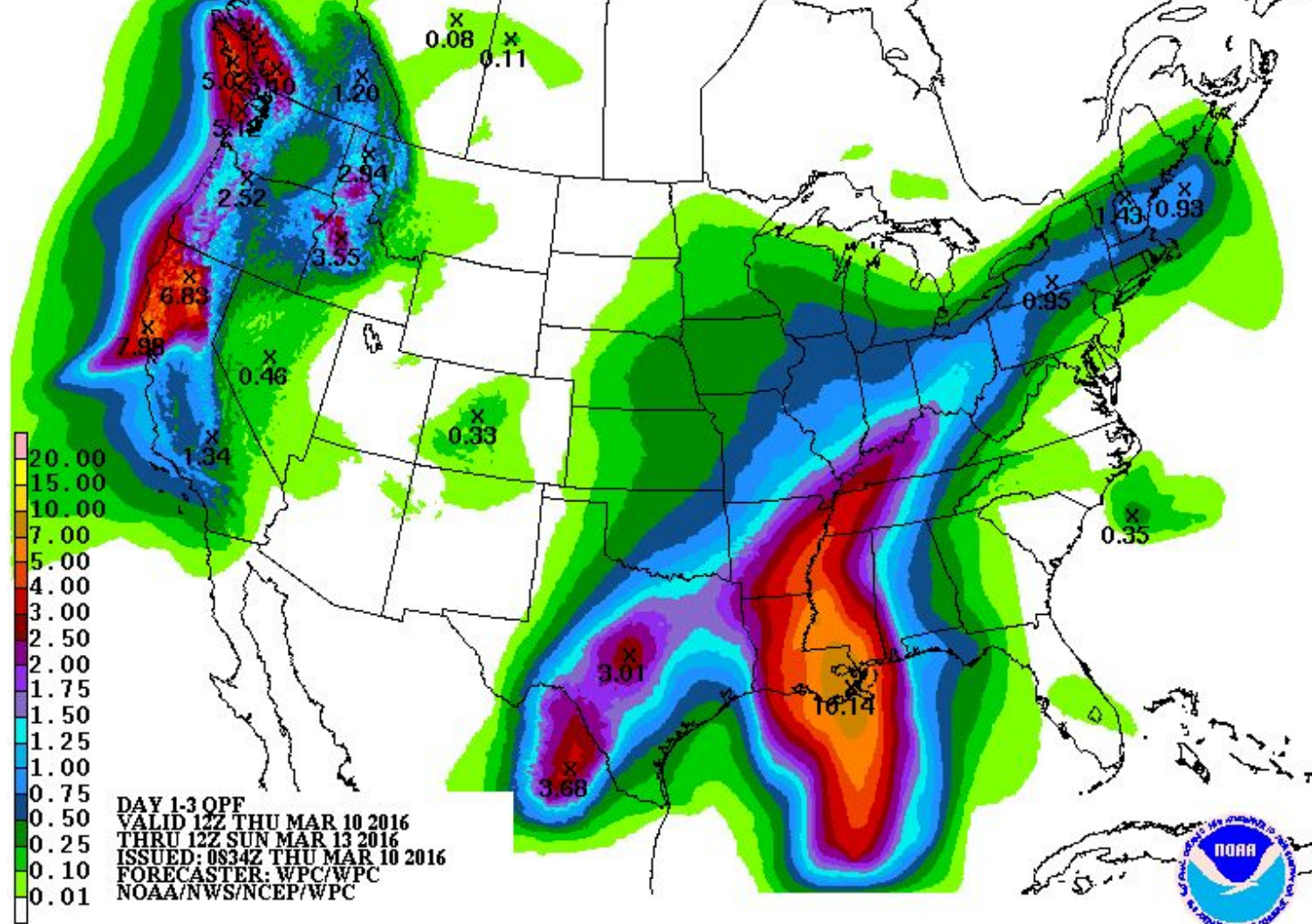
WPC: 1 Day QPF



WPC Day 1 Excessive Rainfall



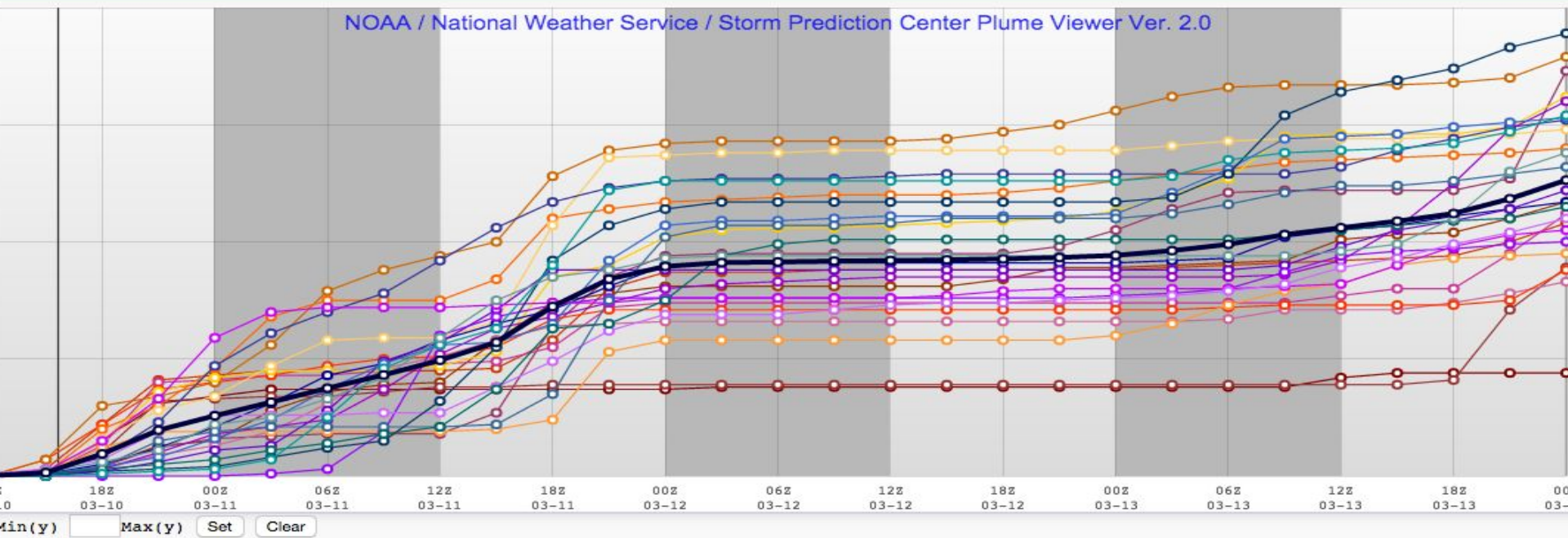
WPC: 3 Day Total QPF



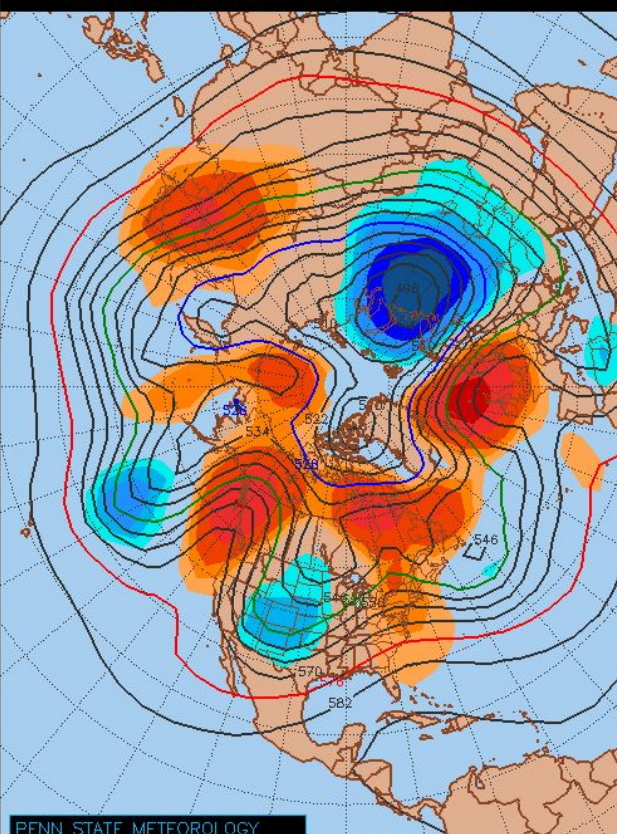
SREF Total QPF: SFO

Change date: and select runtime: then click parameter buttons & map to display for
Observed TEMP, DEWP, RHUM, & WIND plotted near WFO sites only.

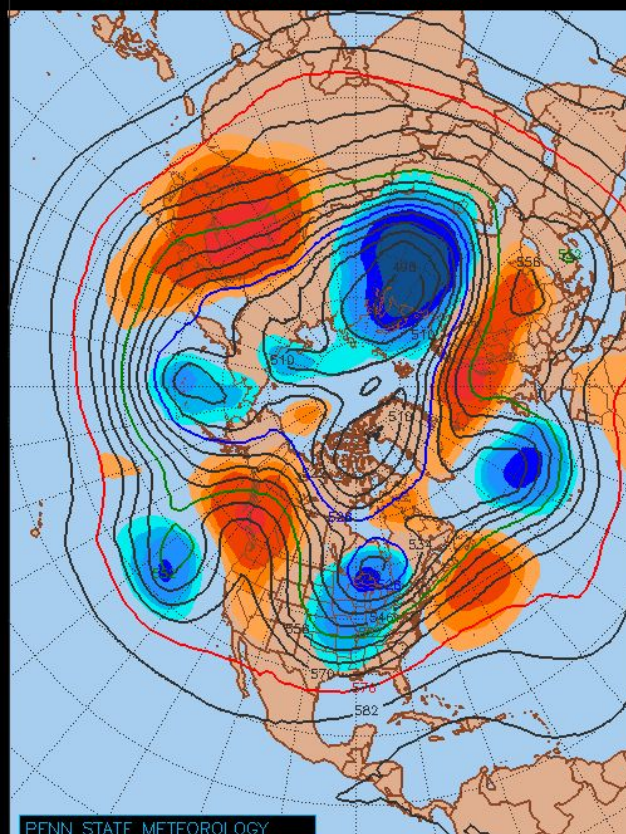
Parameter Selection - Hover over button for more information on that parameter. Beta plumes with violin dProg/dt charts



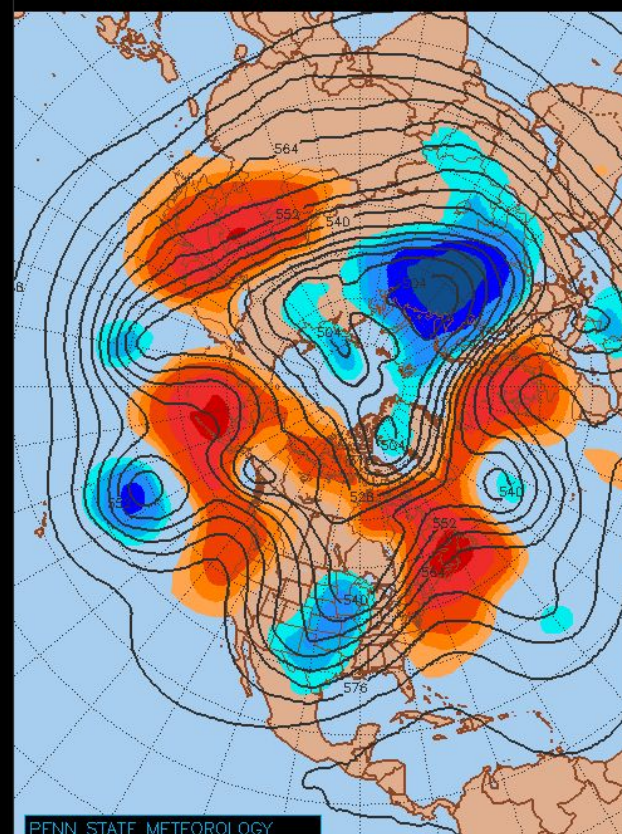
EC, GFS, CMC 7-10 Day



PENN STATE METEOROLOGY
ECMWF 168-240 HR MEAN 500MB HGT
ENDING TIME = SUN 160320/0000Z240 ; WED 090318/0000V000
INITIAL TIME = 160310/0300F240



PENN STATE METEOROLOGY
GFS 168-240 HR MEAN 500MB HGT



PENN STATE METEOROLOGY
CMC 168-240 HR MEAN 500MB HGT